



# STONEMONT PARK 75 SOUTH

Pine Grove Road | Locust Grove, GA | Henry County | 60,000 - 903,701 Square Feet of Industrial Space for Lease



**BILJACK R. BELL**

Partner  
404.375.0444  
bbell@whnre.com

**JOSEPH W. ROGERS**

Partner  
404.550.0817  
jrogers@whnre.com

**WILL GERAGHTY**

Associate  
404.831.2937  
wgeraghty@whnre.com



STONEMONT



**Building A - 239,837 SF**

**Building B - 538,919 SF**

**Building C - 124,945 SF**





# Building A - 239,837 SF

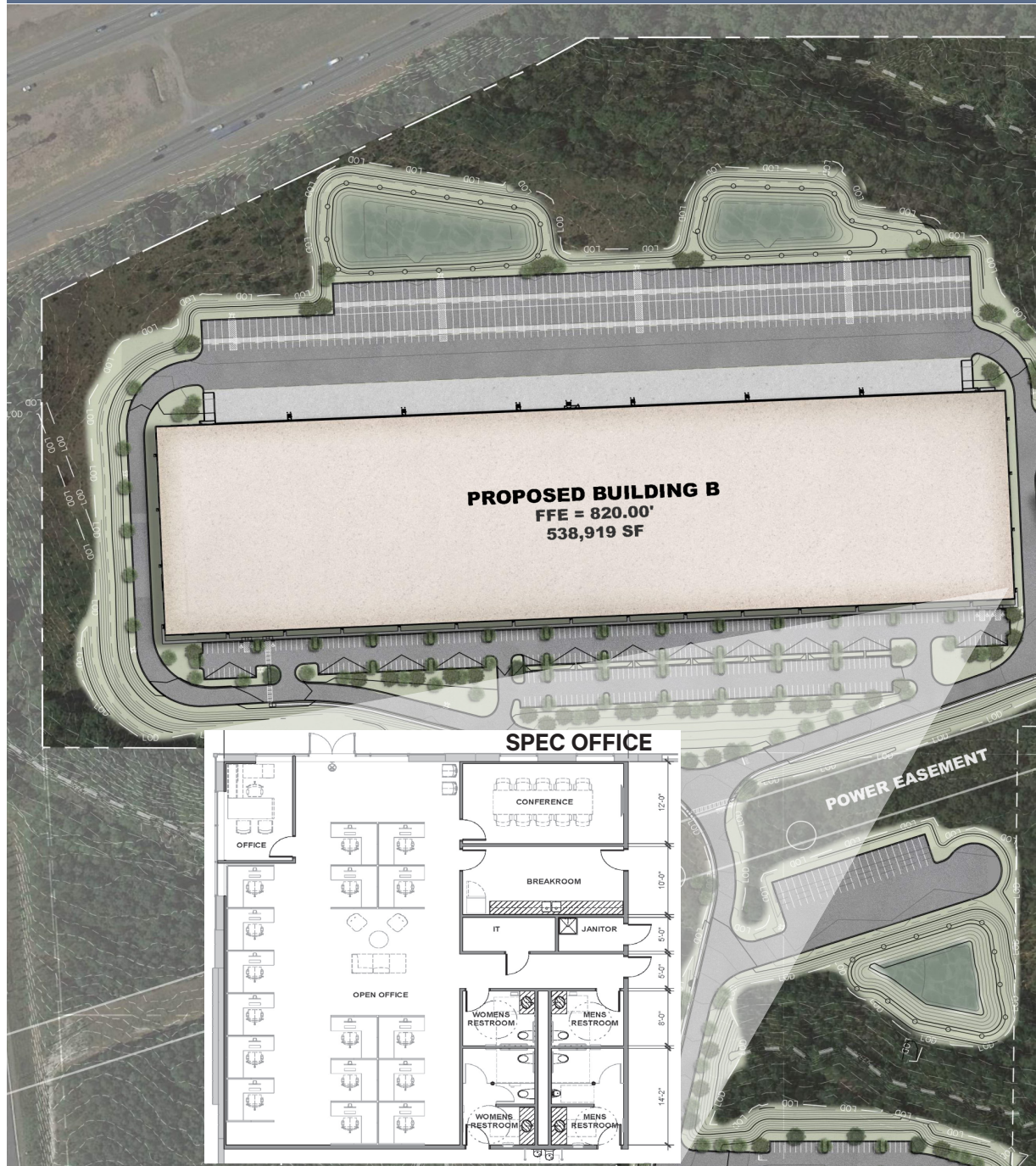


## Building Specs:

<b>TOTAL SF:</b>	239,837 SF
<b>SPEC OFFICE:</b>	3,000 SF
<b>BUILDING CONFIGURATION:</b>	Front Load
<b>CLEAR HEIGHT:</b>	36'
<b>DOCK HIGH DOORS:</b>	38 (9' x 10')
<b>DRIVE-IN RAMPS:</b>	2 (12' x 14')
<b>TRAILER PARKS:</b>	48
<b>AUTO PARKS:</b>	168
<b>BUILDING DEPTH:</b>	320'
<b>COLUMN SPACING:</b>	50' x 56' with 60' speed bays
<b>SPRINKLER:</b>	ESFR
<b>TRUCK COURT:</b>	130' / 185' including trailer parks'
<b>POWER:</b>	2,500 amps, 3 phase, 277v/480v with ability to expand



# Building B - 538,919 SF

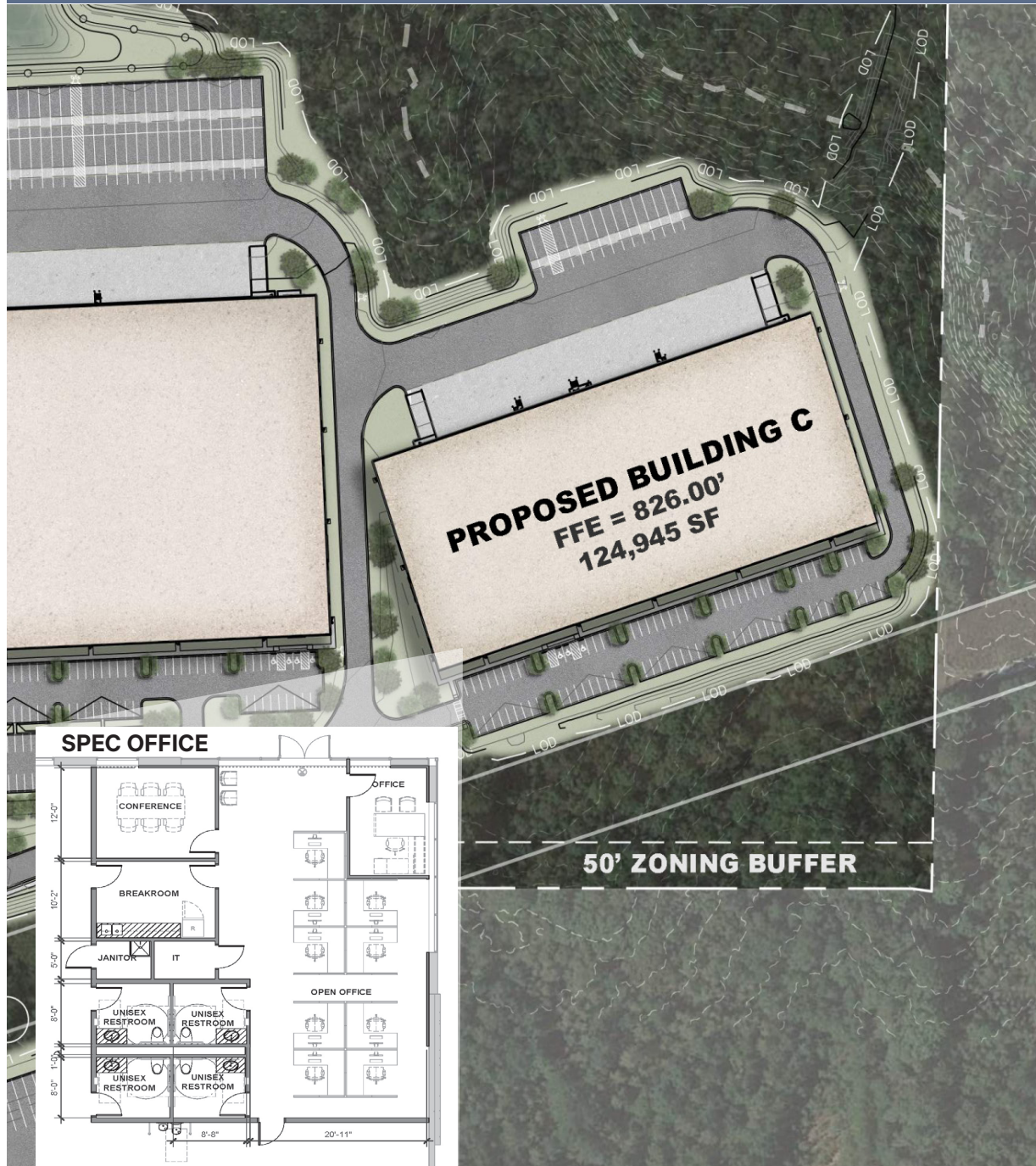


## Building Specs:

<b>TOTAL SF:</b>	538,919 SF
<b>SPEC OFFICE:</b>	3,000 SF
<b>BUILDING CONFIGURATION:</b>	Rear Load
<b>CLEAR HEIGHT:</b>	40'
<b>DOCK HIGH DOORS:</b>	86 (9' x 10')
<b>DRIVE-IN RAMPS:</b>	2 (12' x 14')
<b>TRAILER PARKS:</b>	194
<b>AUTO PARKS:</b>	378
<b>BUILDING DEPTH:</b>	370'
<b>COLUMN SPACING:</b>	50' x 56' with 60' speed bays
<b>SPRINKLER:</b>	ESFR
<b>TRUCK COURT:</b>	130' / 240' including trailer parks'
<b>POWER:</b>	4,000 amps, 3 phase, 277v/480v with ability to expand



# Building C - 124,945 SF



## Building Specs:

<b>TOTAL SF:</b>	124,945 SF
<b>SPEC OFFICE:</b>	1,500 SF
<b>BUILDING CONFIGURATION:</b>	Rear Load
<b>CLEAR HEIGHT:</b>	32'
<b>DOCK HIGH DOORS:</b>	30 (9' x 10')
<b>DRIVE-IN RAMPS:</b>	2 (12' x 14')
<b>TRAILER PARKS:</b>	15
<b>AUTO PARKS:</b>	99
<b>BUILDING DEPTH:</b>	240'
<b>COLUMN SPACING:</b>	50' x 52' with 60' speed bays
<b>SPRINKLER:</b>	ESFR
<b>TRUCK COURT:</b>	130' / 185' including trailer parks'
<b>POWER:</b>	1,500 amps, 3 phase, 277v/480v with ability to expand





**WILSON  
HULL  
& NEAL**  
REAL ESTATE



STONEMONT