

## PREMIER OFFICE AND INDUSTRIAL SPACE FOR LEASE



### SPACE HIGHLIGHTS

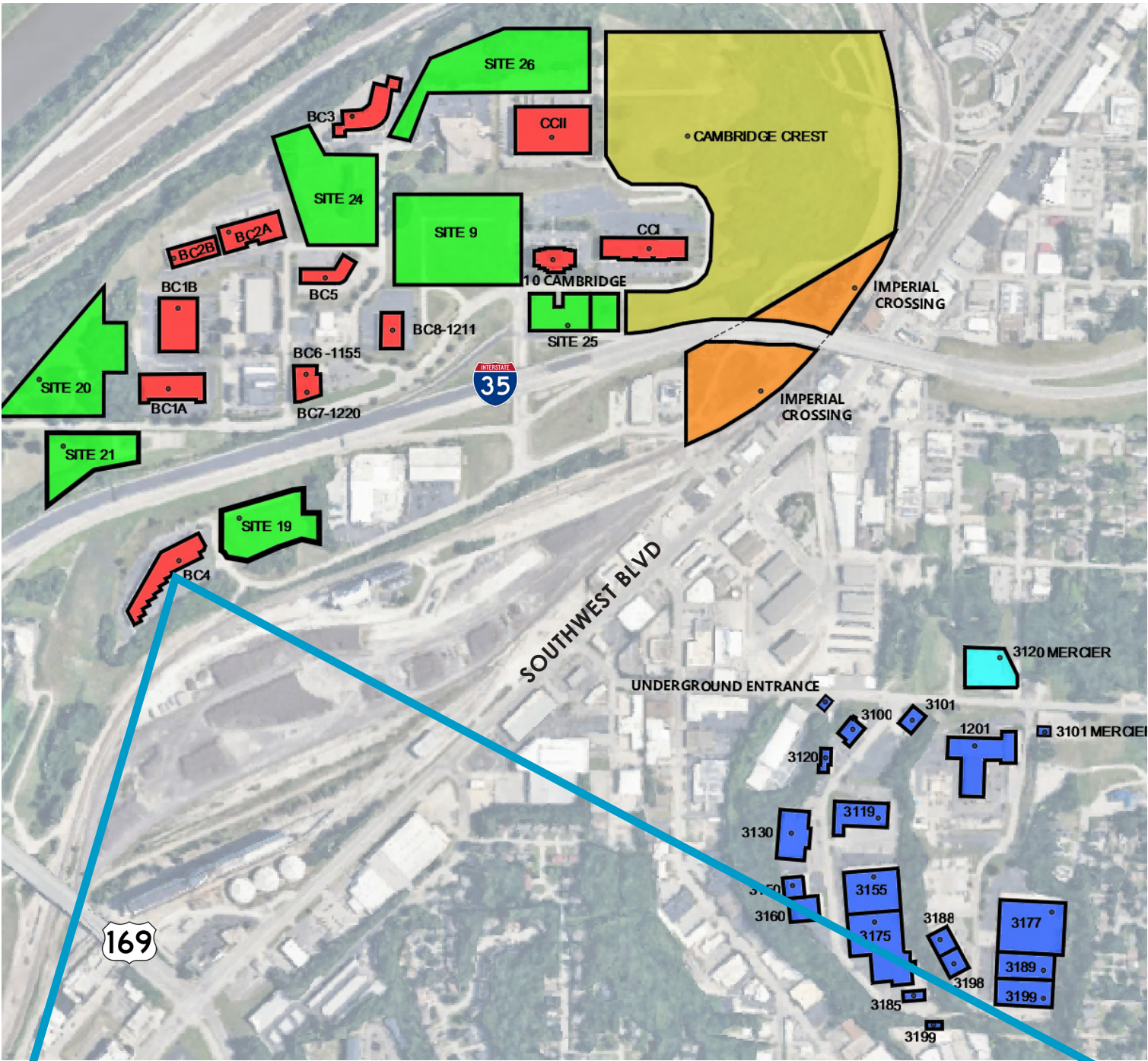
- **3,050 - 5,480 SF Available**
- **Free, Convenient On-Site Parking**
- Positioned in a **well-maintained** and **secured** business park setting
- Accommodates large and small businesses
- Appropriate for light manufacturing, showroom and warehouse/flex applications
- Prominent I-35 Building Signage
- **Clear visibility** and **instant accessibility** to I-35
- **Great location** central to the city's major thoroughfares; moments from the Plaza, Crown Center, Westport and Downtown

### LEASING CONTACT

**MOLLY CRAWFORD MUNNINGHOFF**  
P (816) 701-5013  
[mcrawford@copaken-brooks.com](mailto:mcrawford@copaken-brooks.com)



LOCATION

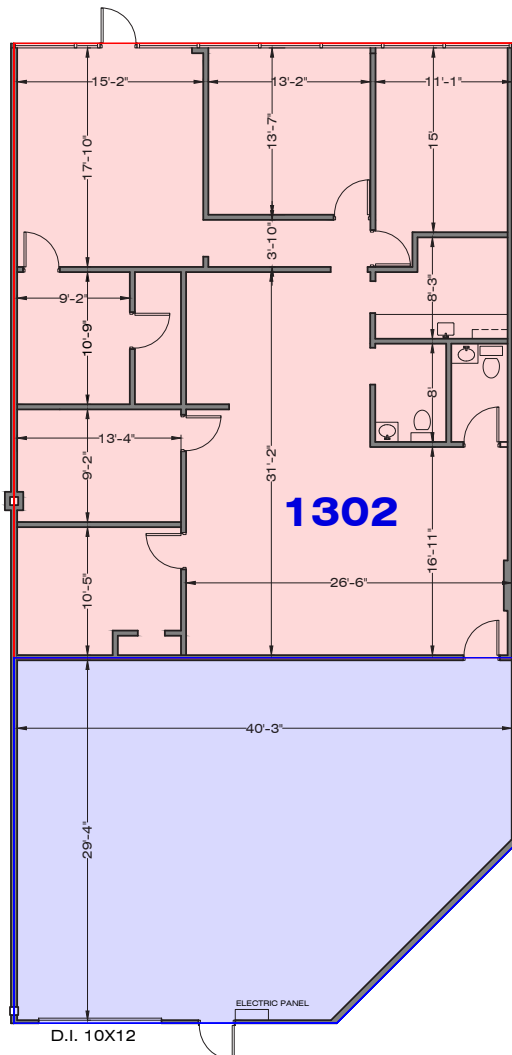
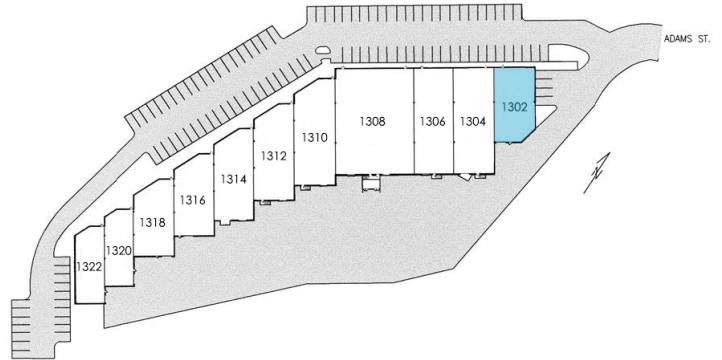




# 1302 ADAMS ST

## BUSINESS CENTER 4

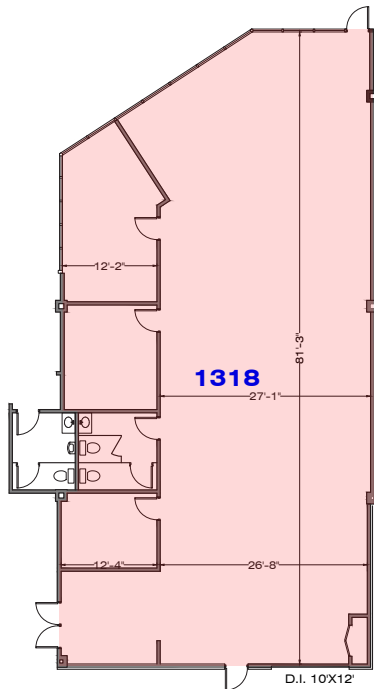
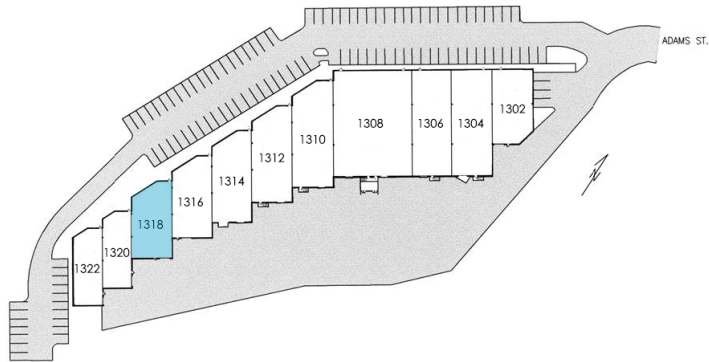
Total SF Available	3,161 SF
Office SF	2,049 SF
Warehouse SF	1,112 SF
Drive-In Doors	1 (10' x 12')
Clear Height	16'
Notes	Highway Visibility



# 1318 ADAMS ST

## BUSINESS CENTER 4

Total SF Available	3,050 SF
Office SF	3,050 SF
Warehouse SF	0 SF
Drive-In Doors	1 (10' x 12')
Clear Height	16'
Notes	Highway Visibility

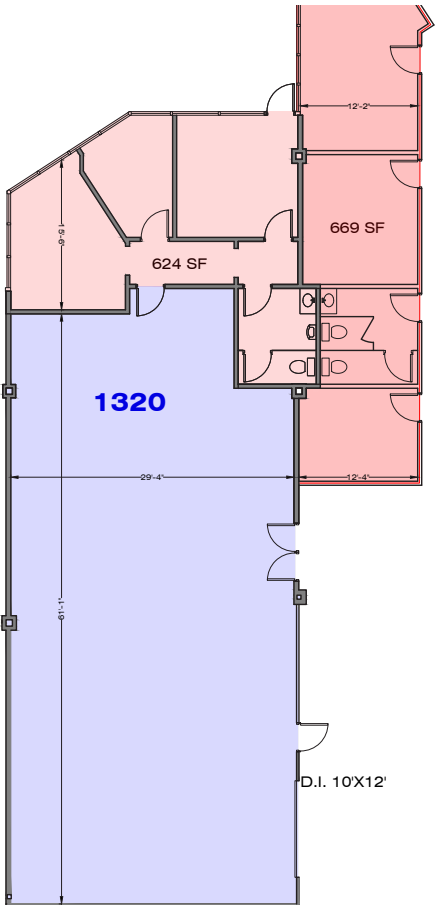
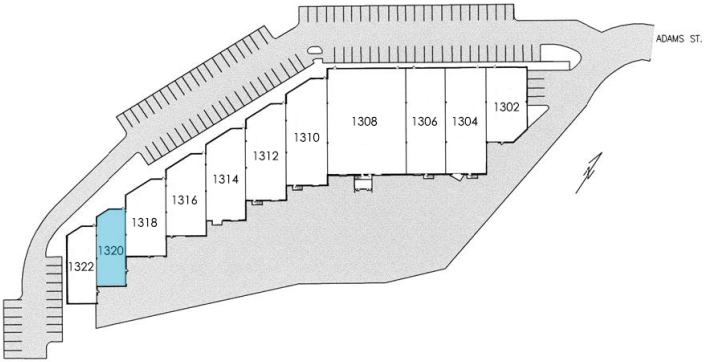




# 1320 ADAMS ST

## BUSINESS CENTER 4

Total SF Available	3,099 SF
Office SF	1,293 SF
Warehouse SF	1,806 SF
Drive-In Doors	1 (10' x 12')
Clear Height	16'
Notes	Highway Visibility

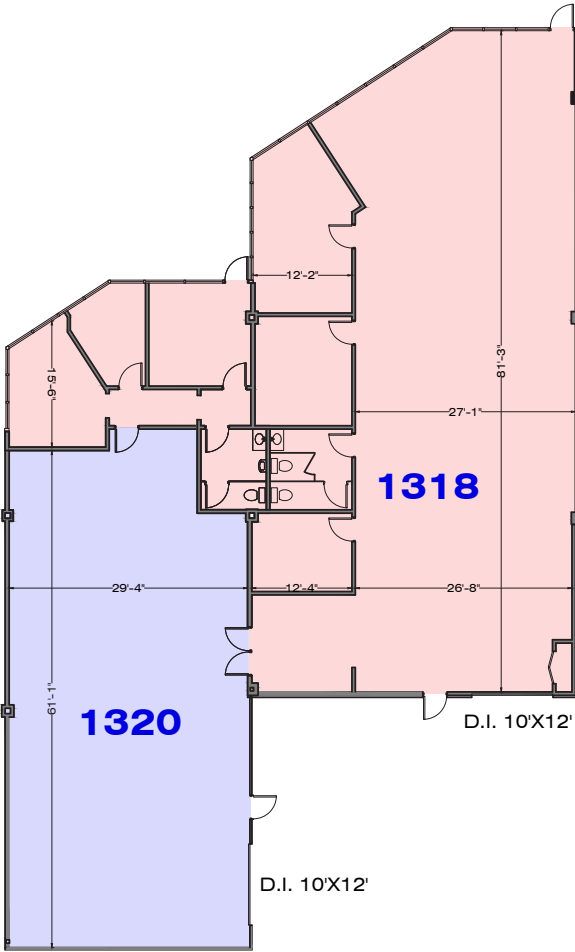
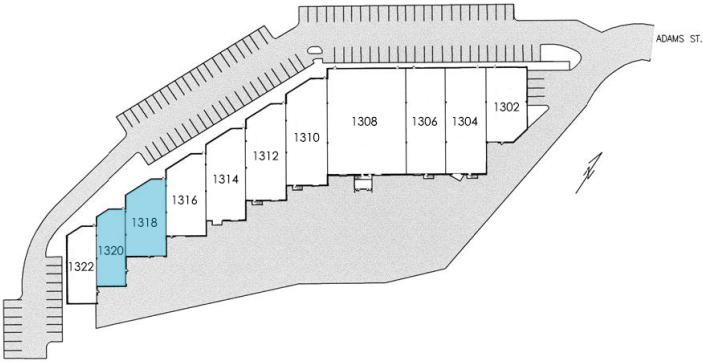




# 1318-1320 ADAMS ST

## BUSINESS CENTER 4

Total SF Available	5,480 SF
Office SF	3,674 SF
Warehouse SF	1,806 SF
Drive-In Doors	2 (10' x 12')
Clear Height	16'
Notes	Highway Visibility









# PREMIER OFFICE AND INDUSTRIAL SPACE FOR LEASE



## LEASING CONTACT

**MOLLY CRAWFORD MUNNINGHOFF**

P (816) 701-5013

[mcrawford@copaken-brooks.com](mailto:mcrawford@copaken-brooks.com)

All information furnished regarding property for sale or lease is from sources deemed reliable, but no warranty or representation is made as to the accuracy thereof and the same is subject to errors, omissions, changes of prices, rental or other conditions, prior sale or lease, or withdrawal without notice.