

Lakefront Office Space For Lease  
**LAKESIDE OFFICE PLAZA**  
1819 S. Dobson Rd • Mesa, AZ 85202



## FEATURES

- Part of a ±15,233 SF Multi-Tenant Office Plaza
- Lakefront Views & Attractive Landscaping
- Covered Parking and Monument Signage Available
- Frontage on Dobson Rd - Great Street Visibility
- C-2 Zoning, City of Mesa
- Direct Access to US-60, Site is Located 1/2 Mile South of Freeway
- 1 Mile From Loop 101

### Tyson Breinholt

480.966.7513 (D)

602.315.7131 (M)

tbreinholt@cpiaz.com

### Caleb Allen

D 480.621.3290

M 480.622.4174

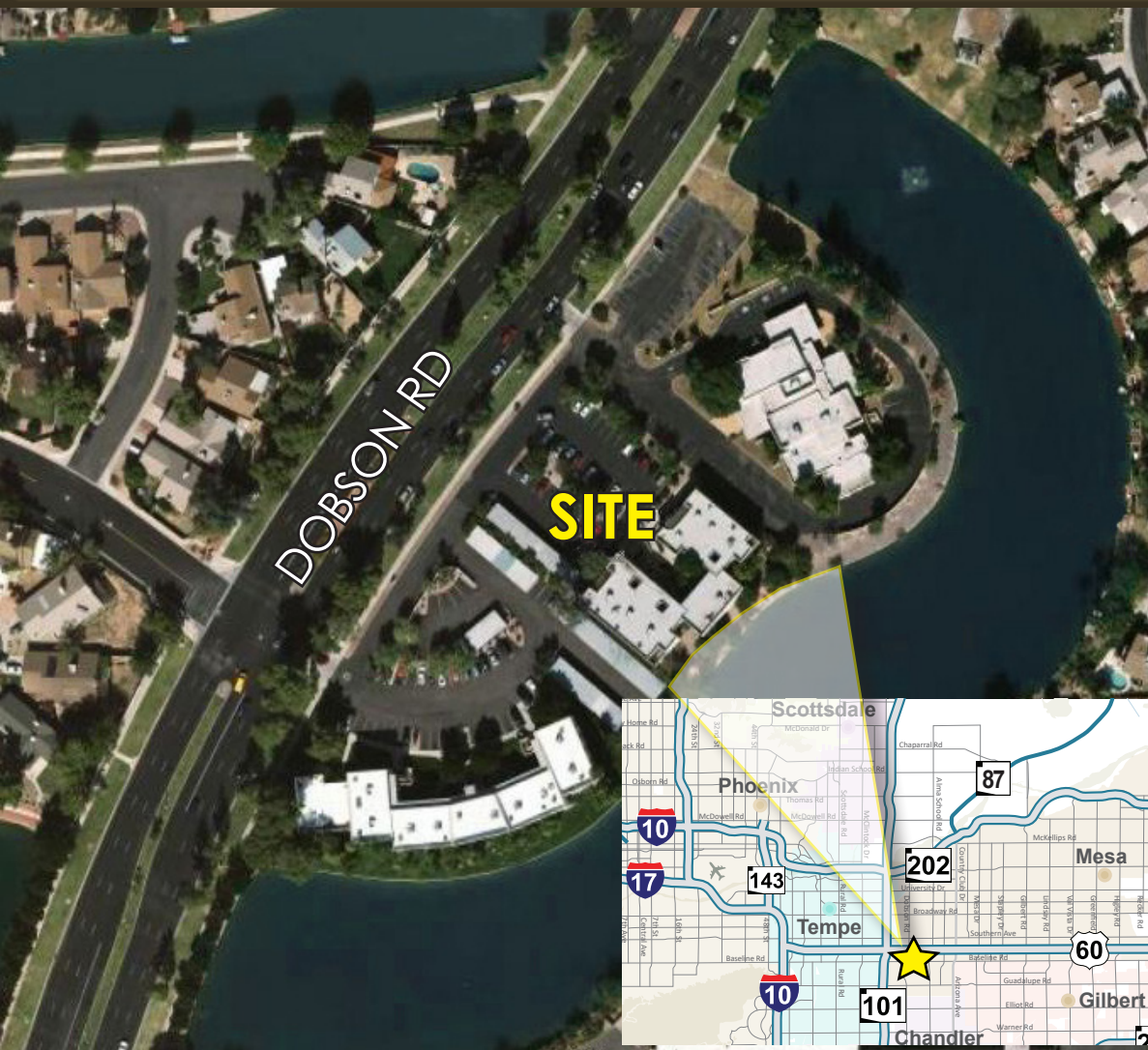
callen@cpiaz.com



**COMMERCIAL PROPERTIES INC.**

Locally Owned. Globally Connected. CORFAC INTERNATIONAL

TEMPE: 2323 W. University Drive, Tempe, AZ 85281 | 480.966.2301  
SCOTTSDALE: 8777 N. Gainey Center Dr., Suite 245, Scottsdale, AZ 85258 | www.cpiaz.com



# Lakefront Office Space For Lease

## LAKESIDE OFFICE PLAZA

1819 S. Dobson Rd • Mesa, AZ 85202

DEMOGRAPHICS	<u>2 Mile</u>	<u>5 Miles</u>	<u>10 Miles</u>
POPULATION (2023):	72,246	415,422	1,168,484
HOUSEHOLDS:	29,773	159,638	449,401
AVG. HH INCOME:	\$79,613	\$79,056	\$93,362
TOTAL BUSINESSES:	3,542	20,011	55,158

### TRAFFIC COUNTS (VPD)

S Dobson Rd / W Isabella Ave NE	34,007
S Dobson Rd / W Baseline Rd S	27,744
W Baseline Rd / S Dobson Ranch E	25,700
S Dobson Rd / W Quail Creek S	40,345
W Baseline Rd / S Dobson Rd E	23,788
S Dobson Rd / W Baseline Rd N	25,382
W Baseline Rd / S Water Works W	27,310
Superstition Fwy / S Dobson Rd W	40,721
S Dobson Rd / Superstition Fwy S	52,882

**Tyson Breinholt**  
 480.966.7513 (D)  
 602.315.7131 (M)  
 tbreinholt@cpiaz.com

**Caleb Allen**  
 D 480.621.3290  
 M 480.622.4174  
 callen@cpiaz.com



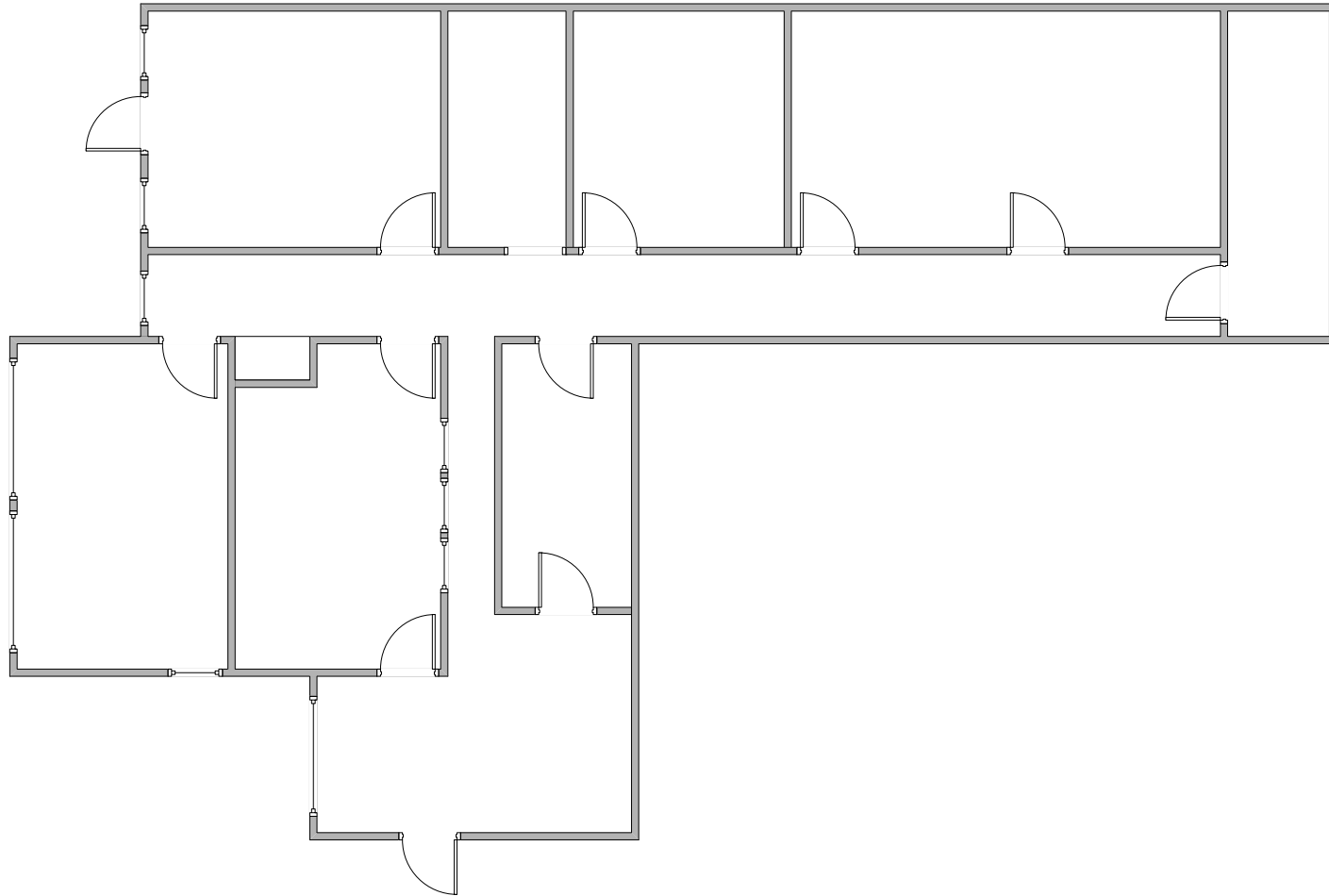
**COMMERCIAL PROPERTIES INC.**

Locally Owned. Globally Connected. CORFAC INTERNATIONAL

TEMPE: 2323 W. University Drive, Tempe, AZ 85281 | 480.966.2301  
 SCOTTSDALE: 8777 N. Gainey Center Dr., Suite 245, Scottsdale, AZ 85258 | www.cpiaz.com

**Suite 109**

±1,664 SF



**Tyson Breinholt**

480.966.7513 (D)

602.315.7131 (M)

tbreinholt@cpiaz.com

**Caleb Allen**

D 480.621.3290

M 480.622.4174

callen@cpiaz.com



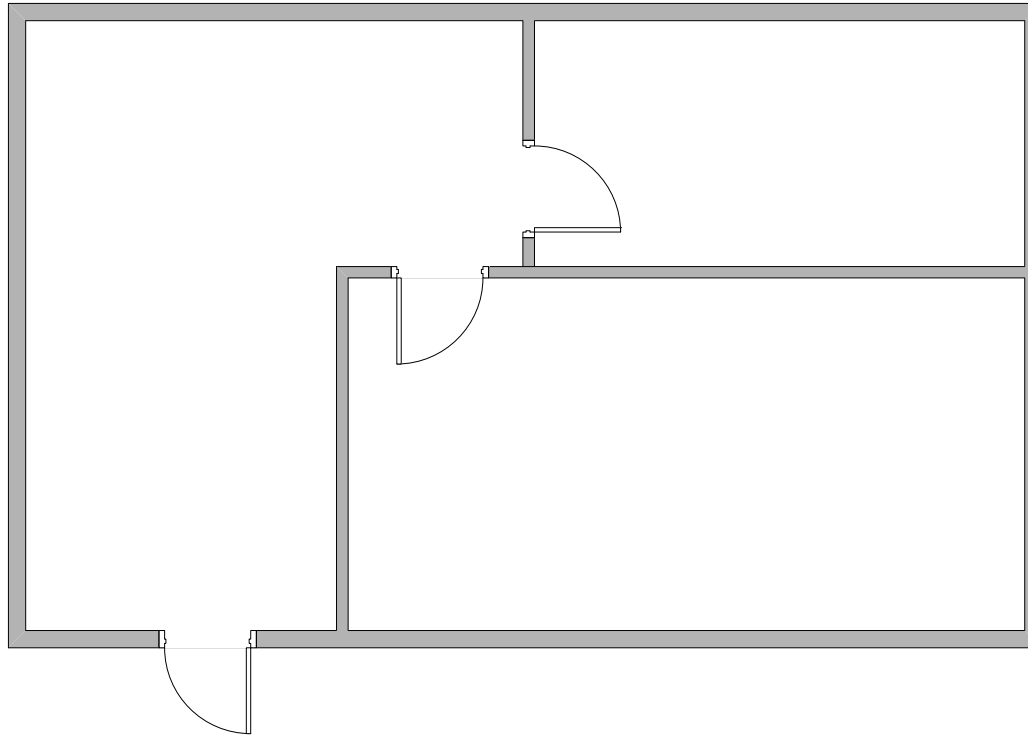
**COMMERCIAL PROPERTIES INC.**

Locally Owned. Globally Connected. CORFAC INTERNATIONAL

TEMPE: 2323 W. University Drive, Tempe, AZ 85281 | 480.966.2301  
SCOTTSDALE: 8777 N. Gainey Center Dr., Suite 245, Scottsdale, AZ 85258 | www.cpiaz.com

**Suite 112**

±558 SF



**Tyson Breinholt**

480.966.7513 (D)

602.315.7131 (M)

tbreinholt@cpiaz.com

**Caleb Allen**

D 480.621.3290

M 480.622.4174

callen@cpiaz.com



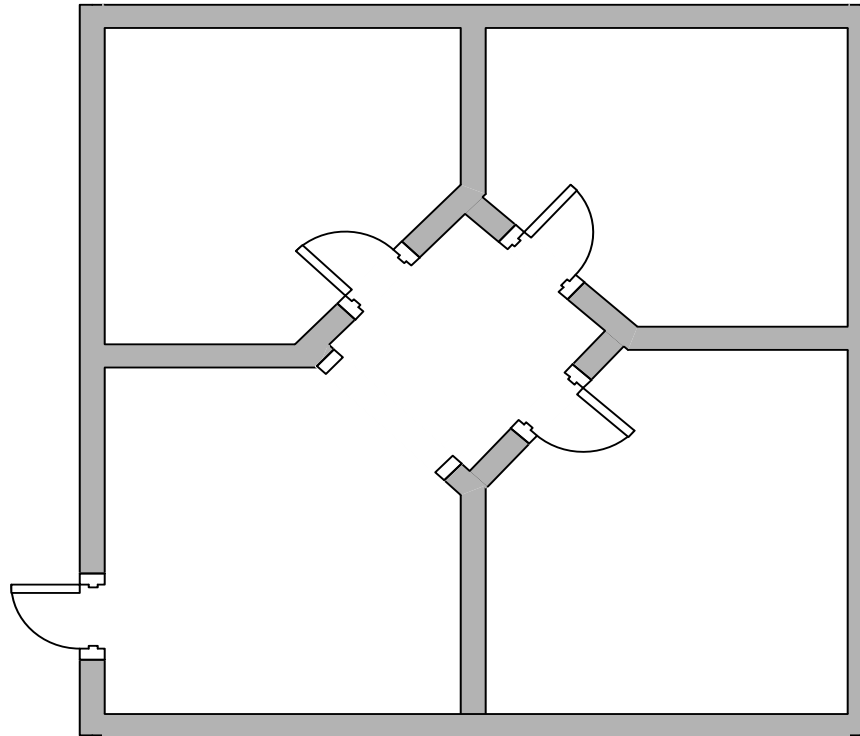
**COMMERCIAL PROPERTIES INC.**

Locally Owned. Globally Connected. CORFAC INTERNATIONAL

TEMPE: 2323 W. University Drive, Tempe, AZ 85281 | 480.966.2301  
SCOTTSDALE: 8777 N. Gainey Center Dr., Suite 245, Scottsdale, AZ 85258 | www.cpiaz.com

**Suite 207**

±594 SF



**Tyson Breinholt**  
480.966.7513 (D)  
602.315.7131 (M)  
tbreinholt@cpiaz.com

**Caleb Allen**  
D 480.621.3290  
M 480.622.4174  
callen@cpiaz.com



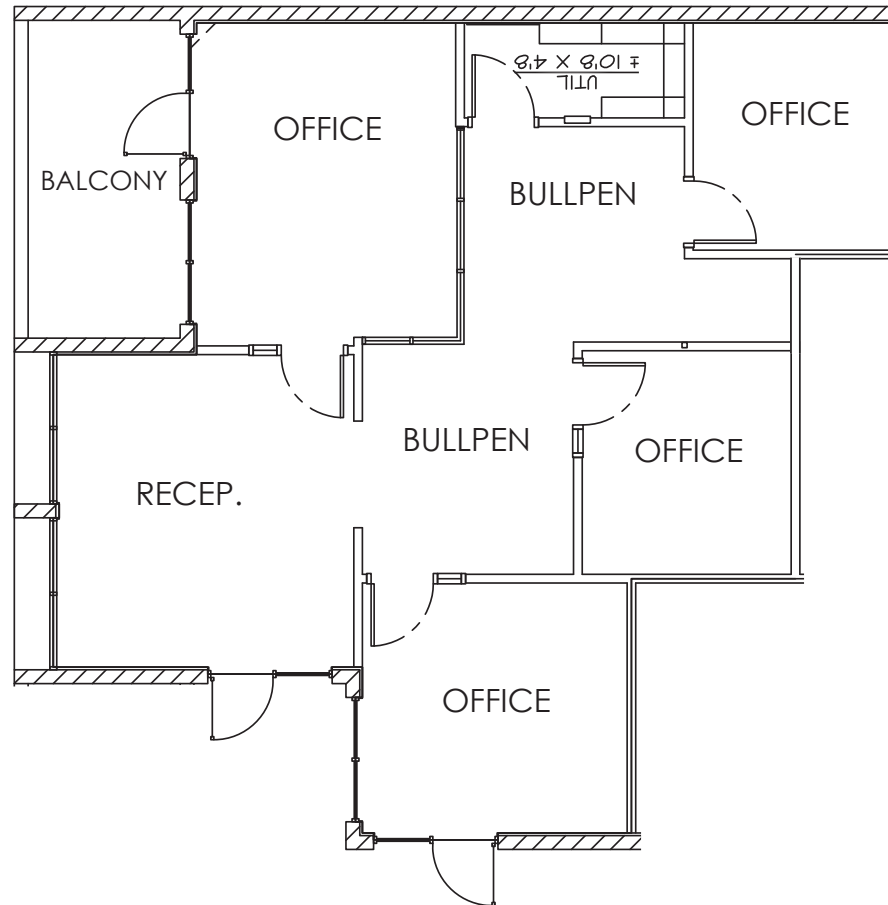
**COMMERCIAL PROPERTIES INC.**

Locally Owned. Globally Connected. CORFAC INTERNATIONAL

TEMPE: 2323 W. University Drive, Tempe, AZ 85281 | 480.966.2301  
SCOTTSDALE: 8777 N. Gainey Center Dr., Suite 245, Scottsdale, AZ 85258 | www.cpiaz.com

**Suite 212**

±1,260 SF



**Tyson Breinholt**  
480.966.7513 (D)  
602.315.7131 (M)  
tbreinholt@cpiaz.com

**Caleb Allen**  
D 480.621.3290  
M 480.622.4174  
callen@cpiaz.com



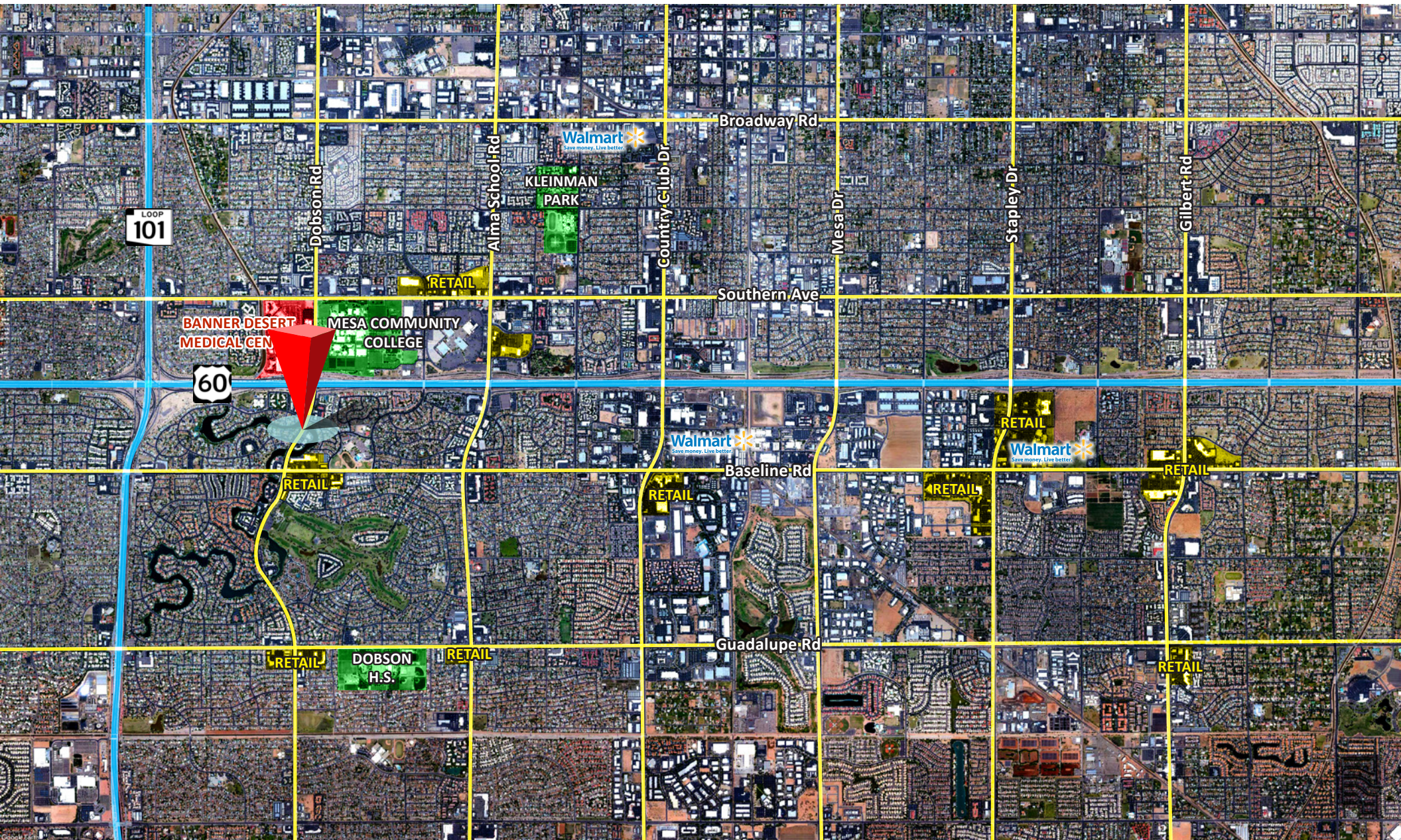
**COMMERCIAL PROPERTIES INC.**

Locally Owned. Globally Connected. CORFAC INTERNATIONAL

TEMPE: 2323 W. University Drive, Tempe, AZ 85281 | 480.966.2301  
SCOTTSDALE: 8777 N. Gainey Center Dr., Suite 245, Scottsdale, AZ 85258 | www.cpiaz.com

# LAKESIDE OFFICE PLAZA

1819 S. Dobson Rd • Mesa, AZ 85202



**Tyson Breinholt**

480.966.7513 (D)

602.315.7131 (M)

tbreinholt@cpiaz.com

**Caleb Allen**

D 480.621.3290

M 480.622.4174

callen@cpiaz.com



**COMMERCIAL PROPERTIES INC.**

Locally Owned. Globally Connected. CORFAC INTERNATIONAL

TEMPE: 2323 W. University Drive, Tempe, AZ 85281 | 480.966.2301  
SCOTTSDALE: 8777 N. Gainey Center Dr., Suite 245, Scottsdale, AZ 85258 | www.cpiaz.com