

9000 GULF FREEWAY

HOUSTON, TX 77061



PROPERTY DETAILS

3 BUILDINGS, 1 CAMPUS

- Building A: LEASED
- Building B: 52,680 SF
- 12,000 SF warehouse: LEASED
- 8.7441 Acres Land
- Top building signage available
- Plug-n-play environment
- Unparalleled visibility from Gulf Freeway
- Ample surface parking
- Efficient ingress and egress from Gulf Freeway
- Fully gated site for secure access
- Redevelopment options
- Priced far below assessed value

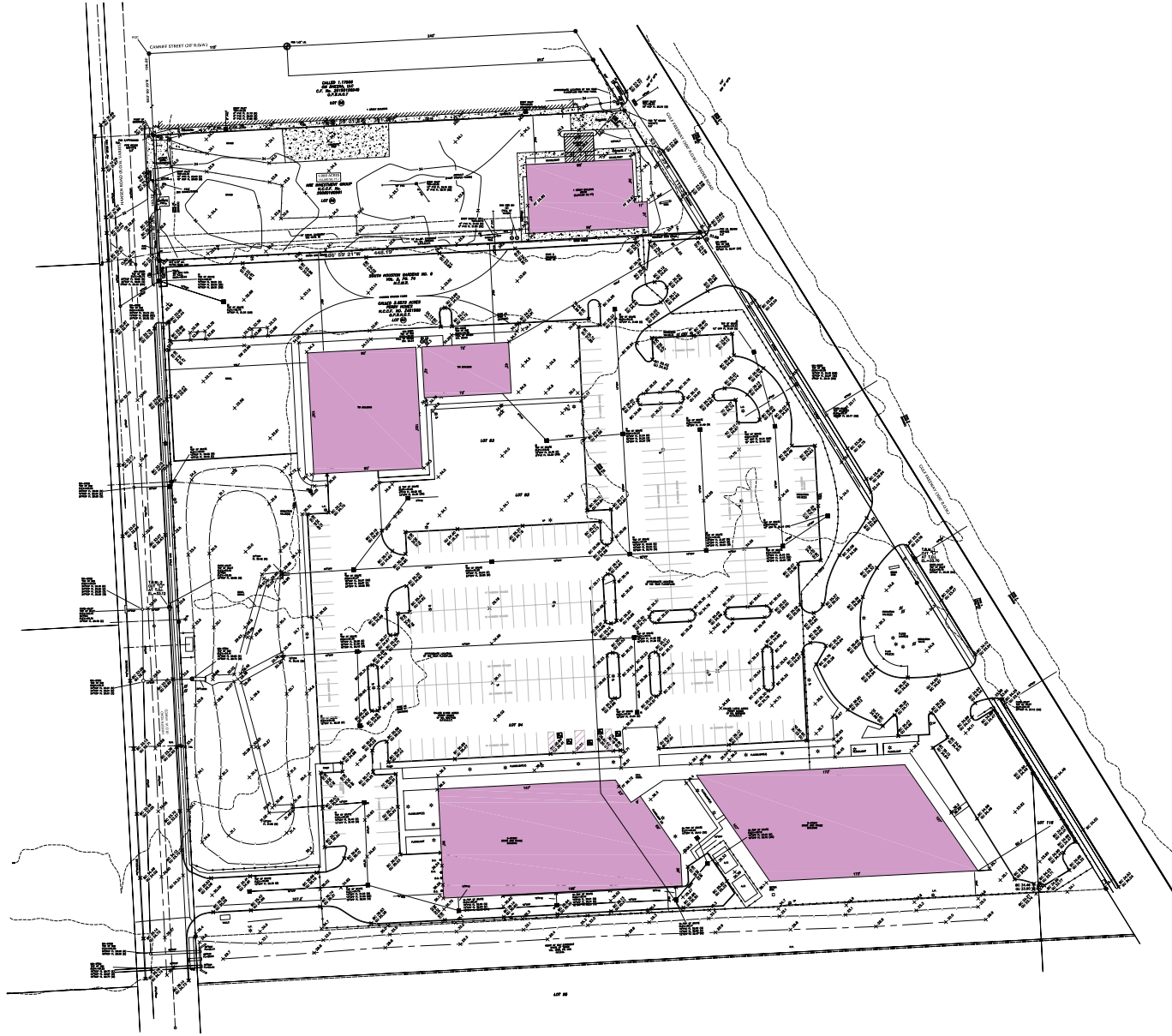


Land Site

— Egress

— Ingress

PROPERTY SURVEY



CAMPUS OVERVIEW

- Highly visible with traffic counts exceeding 400k cars per day
- Easy access to Hobby Airport
- Direct access to Gulf Freeway



BUILDING A

BUILDING B

WAREHOUSE

ADDITIONAL LAND



PLUG-N-PLAY OFFICE

- Furniture included in sale or lease
- Ample conferencing space with various seating arrangements and up-to-date A/V
- Flexibility for a multitude of collaboration spaces while maintaining robust private office space

CAMPUS OPPORTUNITY

BUILDING A FLOOR PLAN

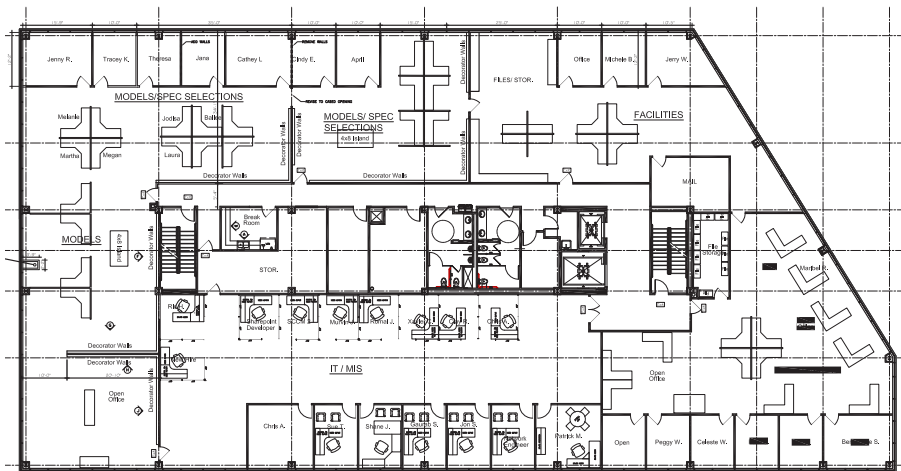


187
Workstations



100
Offices

BUILDING B FLOOR PLAN



Large Cafe



Multipurpose/
Training Room



Huddle Rooms, Board Rooms
and Large Conference
Rooms Throughout



Storage and
Warehouse Space

Business + AIRPORT

AREA OVERVIEW

- A five minute drive time to Hobby Airport
- Proximity to the largest Gulf Coast container port

 William P
Hobby Airport

9000 Gulf Freeway



9000 Gulf Freeway

9000 GULF FREEWAY

HOUSTON, TX 77061



CONTACTS

KELLEY PARKER, III, SIOR

Vice Chair

+1 713 963 2896

kelley.parker@cushwake.com

COE PARKER, SIOR

Senior Director

+1 713 963 2825

coe.parker@cushwake.com

