

FOR LEASE

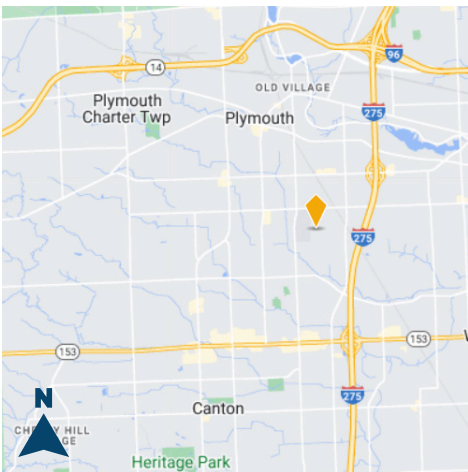
7240-7246 HAGGERTY RD, CANTON



RH COMMERCIAL
REALTY



3,000 SF LIGHT INDUSTRIAL SPACE



PROPERTY DETAILS

- 2,100 SF warehouse / 900 SF office
- Excellent warehouse/distribution space with 16' clearance
- (1) 12'x14' grade level overhead doors
- Endcap unit with frontage on Haggerty Rd
- Rare opportunity for premium light industrial space in Canton
- Light Manufacturing (LI) zoning
- Ideally located minutes from I-275, I-96, M-14, & M-153

For information, please contact:



ROB HUGHES

248.505.0399

rob@rhcommercial.net

REECE HUGHES

248.207.5847

reece@rhcommercial.net

NATE HUGHES

810.923.6099

nate@rhcommercial.net

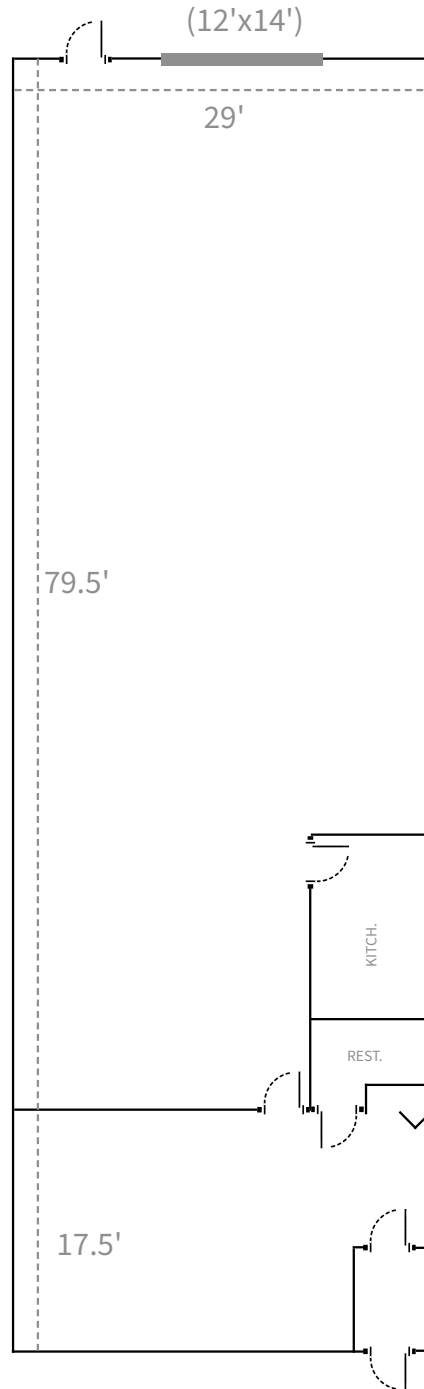
FOR LEASE

7240-7246 HAGGERTY RD, CANTON



FLOOR PLAN SKETCH

(NOT TO SCALE)



For information, please contact:



ROB HUGHES

248.505.0399

rob@rhcommercial.net

REECE HUGHES

248.207.5847

reece@rhcommercial.net

NATE HUGHES

810.923.6099

nate@rhcommercial.net

FOR LEASE

7240-7246 HAGGERTY RD, CANTON



PRICING INFORMATION

Lease Rate:	\$10.00 / SF
Lease Type:	Modified Gross
Est. NNN:	N/A
Sale Price:	NFS
Price per SF:	N/A

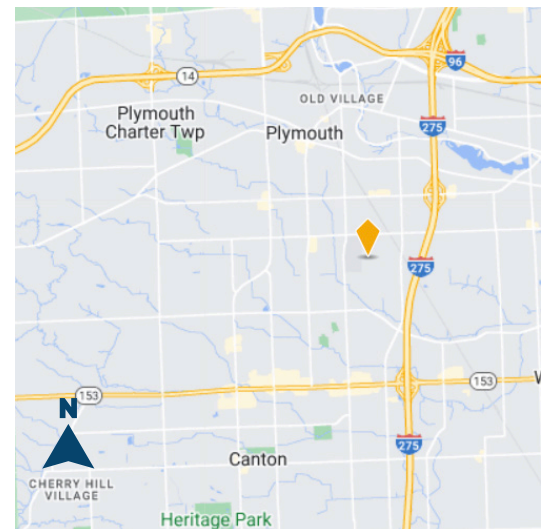
PROPERTY DESCRIPTION

Total SF:	12,000	Parcel ID:	Available
Available SF:	3,000	Parking Spaces:	Abundant
Office SF:	900	Rail Served:	No
Property Type:	Industrial	Cranes:	No
Tenancy:	Multiple	Heat:	Forced Air
Year Built:	1988	Clearance:	16'
Year Renovated:	N/A	Grade/Dock Doors:	1 / 0
Zoning:	Light Ind.	Fire Suppression:	No
Site/Parcel Area:	2.52 AC		

SUMMARY

Unique opportunity for light industrial space with close proximity with the Canton-Plymouth Mettetal Airport. This is a great space for users that require minimum office and/or high clearance. Located in a great location near many thriving businesses and minutes away from all major expressways and local amenities.

ROAD MAP



For information, please contact:



ROB HUGHES

248.505.0399

rob@rhcommercial.net

REECE HUGHES

248.207.5847

reece@rhcommercial.net

NATE HUGHES

810.923.6099

nate@rhcommercial.net