

# 444 Randy Road

## INDUSTRIAL SPACE FOR LEASE

444 Randy Road, Carol Stream, IL 60188

[Property Website](#)

±4,000 SF  
Available

Open  
Warehouse

Large  
Drive-in Door

Great Access  
to I-355



**Joe Karmin, SIOR**

Executive Vice President  
(847) 287-4567

[joe.karmin@transwestern.com](mailto:joe.karmin@transwestern.com)

**Michael Marconi, SIOR**

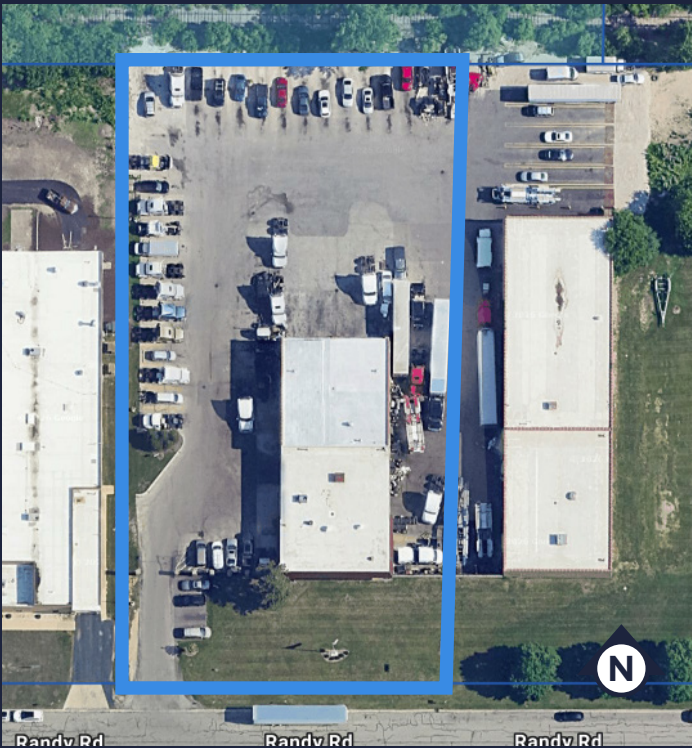
Sr. EVP & Designated Managing Broker  
(630) 202-8636

[michael.marconi@transwestern.com](mailto:michael.marconi@transwestern.com)

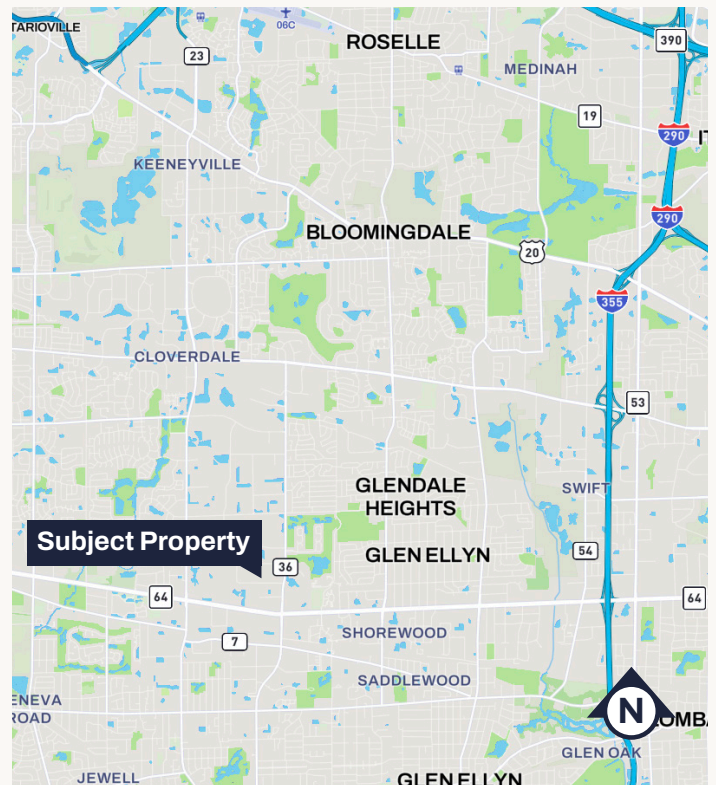
The information provided herein was obtained from sources believed reliable; however, Transwestern makes no guarantees, warranties, or representations as to the completeness or accuracy thereof. The presentation of this information is submitted subject to errors, omissions, change of price or conditions, prior sale or lease, or withdrawal without notice. Copyright © 2026 Transwestern.

## Property Highlights

- Open warehouse with a large drive-in door
- Great access to I-355 via North Avenue and Army Trail Road
- Zoned I (Industrial District)
- Low DuPage County taxes
- Versatile office/warehouse layout
- Ideal for a variety of business uses



BUILDING SIZE	±22,283 SF
LAND AREA	±2.25 AC
AVAILABLE SIZE	±4,000 SF
OFFICE SIZE	±1,000 SF
CEILING HEIGHT	16'
LOADING	1 DID (10' x 12')
POWER	200 Amps
PARKING	±8 Cars
SPRINKLERS	Wet
HEATING	Gas
YEAR BUILT	1973
CONSTRUCTION	MASONRY
LEASE RATE	\$12.95 PSF MG



Joe Karmin, SIOR

Executive Vice President  
(847) 287-4567  
joe.karmin@transwestern.com

Michael Marconi, SIOR

Sr. EVP & Designated Managing Broker  
(630) 202-8636  
michael.marconi@transwestern.com

The information provided herein was obtained from sources believed reliable; however, Transwestern makes no guarantees, warranties, or representations as to the completeness or accuracy thereof. The presentation of this information is submitted subject to errors, omissions, change of price or conditions, prior sale or lease, or withdrawal without notice. Copyright © 2026 Transwestern.