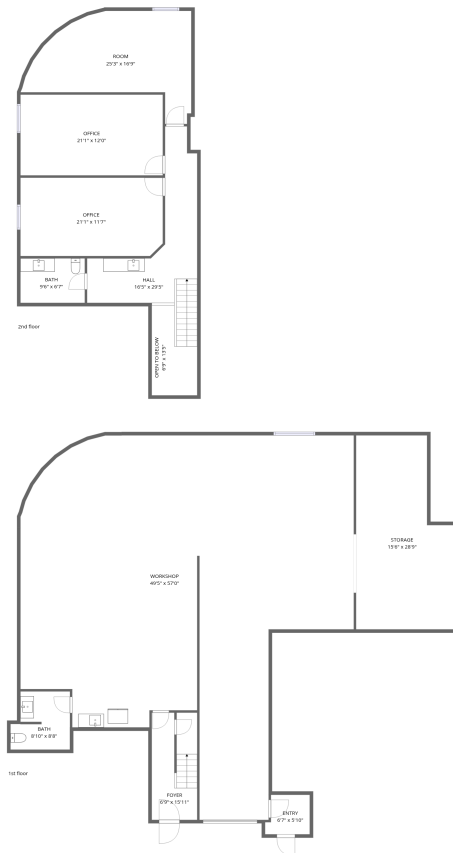


Home data report

1767 Standard Avenue, Grand Central, Glendale, Los Angeles County, California, United States, 91201, B



Total Area: 1316 sq. ft

1st Floor: 226 sq. ft, 2nd Floor: 1090 sq. ft

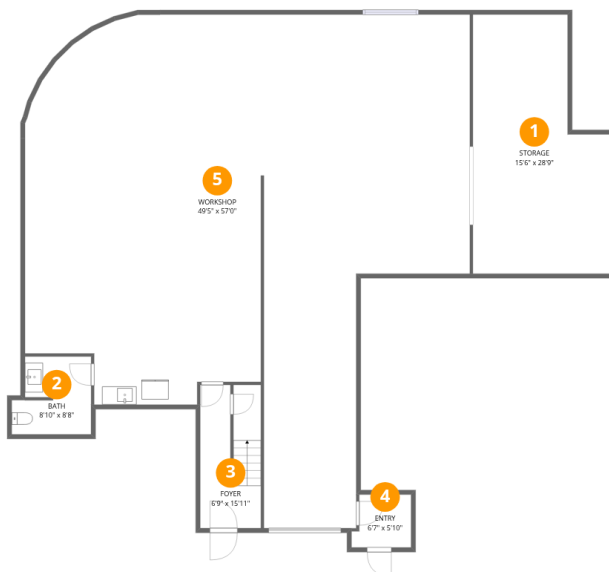
Excluded: Storage 389 sq. ft, Workshop 1988 sq. ft, Open to below 69 sq. ft, Walls: 215 sq. ft

Property summary



Home data report

1767 Standard Avenue, Grand Central, Glendale, Los Angeles County, California, United States, 91201, B



Room dimensions

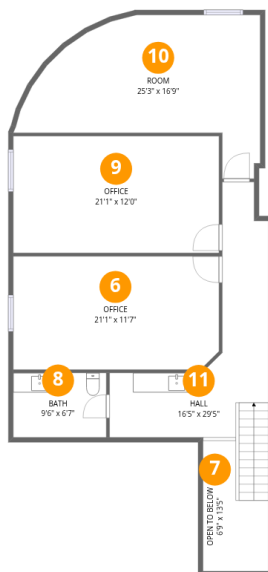
Floor 1

Total:226sqft Excluded: 2377sqft

#		Dimensions	sqft	Counted as living area
1	Storage	15'6" x 28'9"	379 sq. ft	No
2	Bath	8'10" x 8'8"	68 sq. ft	Yes
3	Foyer	6'9" x 15'11"	85 sq. ft	Yes
4	Entry	6'7" x 5'10"	35 sq. ft	Yes
5	Workshop	49'5" x 57'0"	1980 sq. ft	No

Home data report

1767 Standard Avenue, Grand Central, Glendale, Los Angeles County, California, United States, 91201, B



Room dimensions

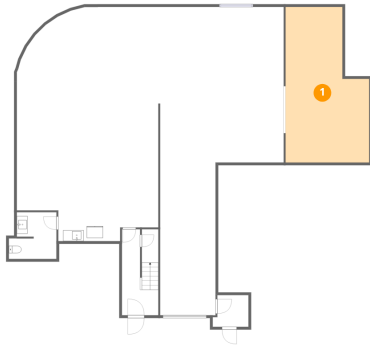
Floor 2

Total:1090sqft Excluded: 69sqft

#		Dimensions	sqft	Counted as living area
6	Office	21'1" x 11'7"	243 sq. ft	Yes
7	Open To Below	6'9" x 13'5"	69 sq. ft	No
8	Bath	9'6" x 6'7"	63 sq. ft	Yes
9	Office	21'1" x 12'0"	253 sq. ft	Yes
10	Room	25'3" x 16'9"	278 sq. ft	Yes
11	Hall	16'5" x 29'5"	220 sq. ft	Yes

1767 Standard Avenue, Grand Central, Glendale, Los Angeles County, California, United States, 91201, B

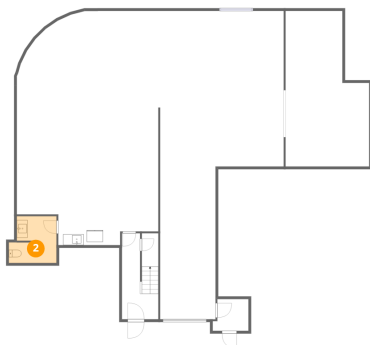
1 Floor 1 - Storage



Dimensions: 15'6" x 28'9"
Area: 379 sq. ft
Counted as living area: No

Heated: No
Finished: No
Enclosed: No
Contiguous: Yes
Permitted: Yes
Wet space: No
Addition: No
Conversion: No

2 Floor 1 - Bath

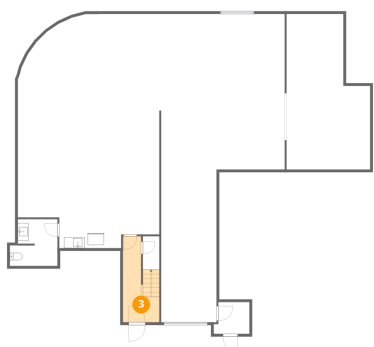


Dimensions: 8'10" x 8'8"
Area: 68 sq. ft
Counted as living area: No

Heated: Yes
Finished: Yes
Enclosed: Yes
Contiguous: No
Permitted: Yes
Wet space: Yes
Addition: No
Conversion: No

1767 Standard Avenue, Grand Central, Glendale, Los Angeles County, California, United States, 91201, B

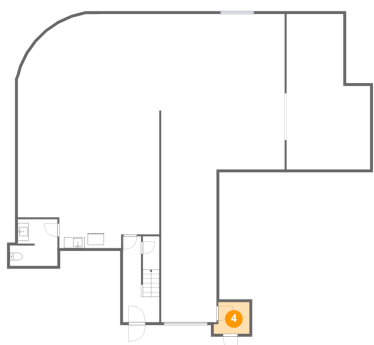
3 Floor 1 - Foyer



Dimensions: 6'9" x 15'11"
Area: 85 sq. ft
Counted as living area: No

Heated: Yes
Finished: Yes
Enclosed: Yes
Contiguous: No
Permitted: Yes
Wet space: No
Addition: No
Conversion: No

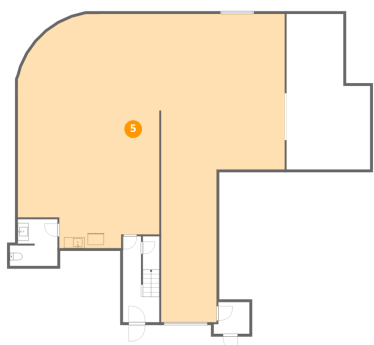
4 Floor 1 - Entry



Dimensions: 6'7" x 5'10"
Area: 35 sq. ft
Counted as living area: No

Heated: Yes
Finished: Yes
Enclosed: Yes
Contiguous: No
Permitted: Yes
Wet space: No
Addition: No
Conversion: No

5 Floor 1 - Workshop

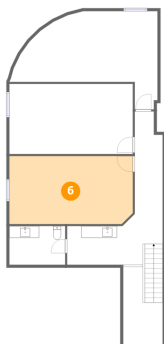


Dimensions: 49'5" x 57'0"
Area: 1980 sq. ft
Counted as living area: No

Heated: No
Finished: No
Enclosed: Yes
Contiguous: Yes
Permitted: Yes
Wet space: No
Addition: No
Conversion: No

1767 Standard Avenue, Grand Central, Glendale, Los Angeles County, California, United States, 91201, B

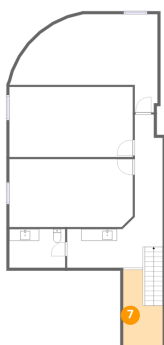
6 Floor 2 - Office



Dimensions: 21'1" x 11'7"
Area: 243 sq. ft
Counted as living area: Yes

Heated: Yes
Finished: Yes
Enclosed: Yes
Contiguous: Yes
Permitted: Yes
Wet space: No
Addition: No
Conversion: No

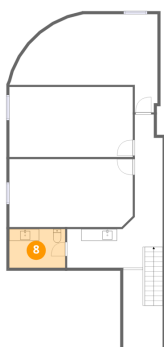
7 Floor 2 - Open To Below



Dimensions: 6'9" x 13'5"
Area: 69 sq. ft
Counted as living area: No

Heated: No
Finished: No
Enclosed: No
Contiguous: Yes
Permitted: No
Wet space: No
Addition: No
Conversion: No

8 Floor 2 - Bath

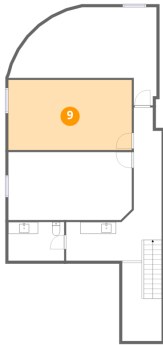


Dimensions: 9'6" x 6'7"
Area: 63 sq. ft
Counted as living area: Yes

Heated: Yes
Finished: Yes
Enclosed: Yes
Contiguous: Yes
Permitted: Yes
Wet space: Yes
Addition: No
Conversion: No

1767 Standard Avenue, Grand Central, Glendale, Los Angeles County, California, United States, 91201, B

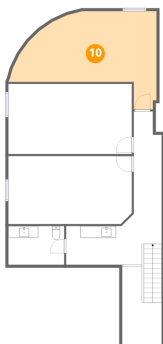
9 Floor 2 - Office



Dimensions: 21'1" x 12'0"
Area: 253 sq. ft
Counted as living area: Yes

Heated: Yes
Finished: Yes
Enclosed: Yes
Contiguous: Yes
Permitted: Yes
Wet space: No
Addition: No
Conversion: No

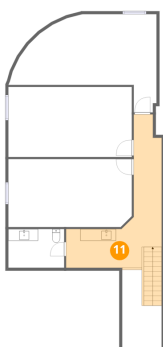
10 Floor 2 - Room



Dimensions: 25'3" x 16'9"
Area: 278 sq. ft
Counted as living area: Yes

Heated: Yes
Finished: Yes
Enclosed: Yes
Contiguous: Yes
Permitted: Yes
Wet space: No
Addition: No
Conversion: No

11 Floor 2 - Hall



Dimensions: 16'5" x 29'5"
Area: 220 sq. ft
Counted as living area: Yes

Heated: Yes
Finished: Yes
Enclosed: Yes
Contiguous: Yes
Permitted: Yes
Wet space: No
Addition: No
Conversion: No