

# FOR LEASE - Office/Retail

First & Second Floor Space in Automobile Alley

615 & 617 N. Broadway, Oklahoma City OK 73102

First Level - 2,694 sf    Second Level - 2,845 sf



## PROPERTY FEATURES

- Approximately 5,539 sf available broken up with 2,694 sf on the ground floor and 2,845 sf on the second level.
- Parking provided immediately north of the building plus a two car parking garage inside.
- Located across the street from the new Heartland headquarters, along the OKC Streetcar route on historic Automobile Alley.
- Blocks away from the restaurants and nightlife in Bricktown, Automobile Alley, and Midtown.

## LEASE INFORMATION

**Base Rent:** \$14 psf

**Estimated NNNs:** \$3.97 psf

**Term:** Negotiable

**Utilities & Janitorial:** Tenant responsibility



### FOR MORE INFORMATION:

Troy Humphrey

thumphrey@LRCRE.com

(405) 219-7500

114 N.W. 6<sup>th</sup> Street, Suite 206  
Oklahoma City, OK 73102  
Office: 405.231.5700  
www.LRCRE.com

The information above is believed to be accurate and reliable but is not warranted and may change without notice. Land Run Commercial Real Estate Advisors, LLC makes no guarantees, warranties or representations about the property and recommends tenants independent investigation as to the accuracy thereof.

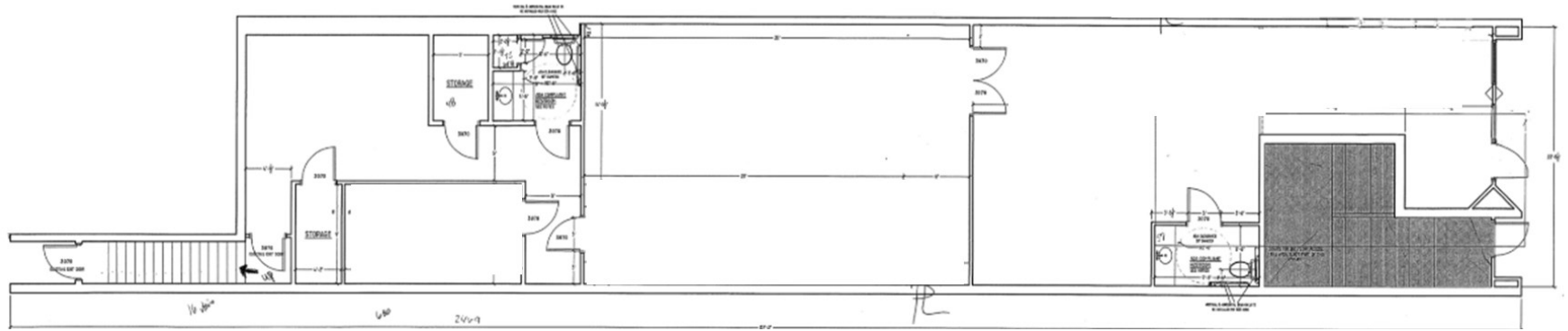
# FOR LEASE - Office/Retail

First & Second Floor Space in Automobile Alley

615 & 617 N. Broadway, Oklahoma City OK 73102

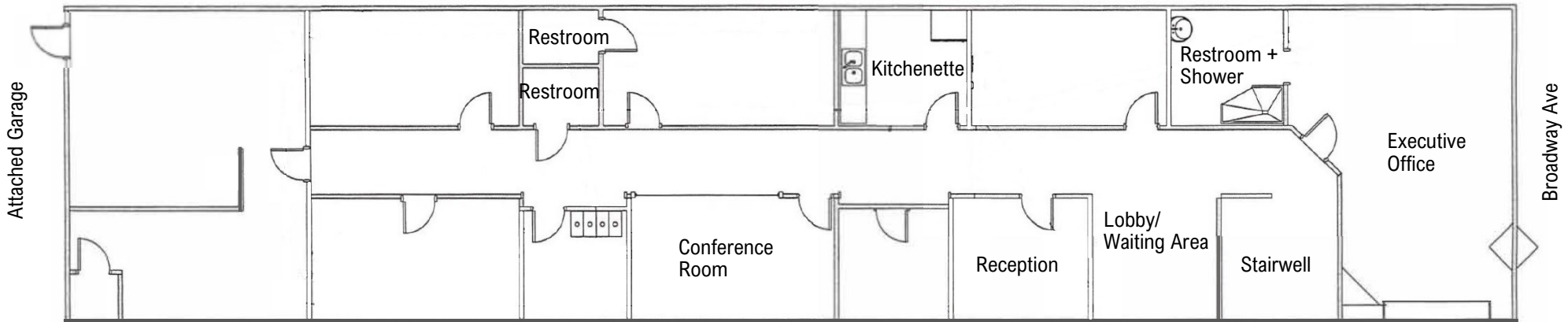
First Level - 2,694 sf    Second Level - 2,845 sf

## FIRST LEVEL



Broadway Ave

## SECOND LEVEL



Attached Garage

Broadway Ave



### FOR MORE INFORMATION:

Troy Humphrey

thumphrey@LRCRE.com

(405) 219-7500

114 N.W. 6<sup>th</sup> Street, Suite 206

Oklahoma City, OK 73102

Office: 405.231.5700

www.LRCRE.com

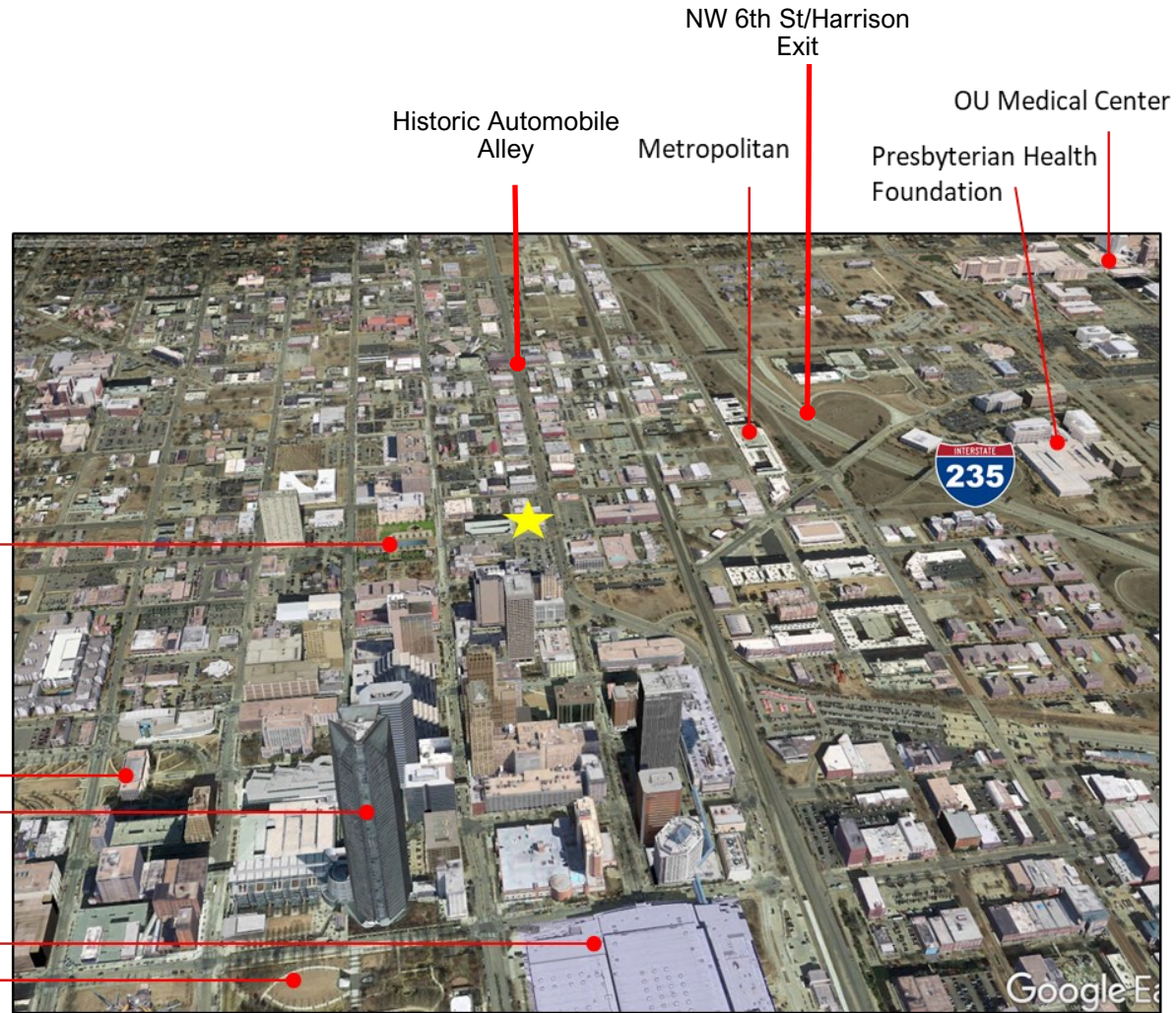
The information above is believed to be accurate and reliable but is not warranted and may change without notice. Land Run Commercial Real Estate Advisors, LLC makes no guarantees, warranties or representations about the property and recommends tenants independent investigation as to the accuracy thereof.

# FOR LEASE - Office/Retail

First & Second Floor Space in Automobile Alley

615 & 617 N. Broadway, Oklahoma City OK 73102

First Level - 2,694 sf    Second Level - 2,845 sf



OKC Memorial Museum

OKC City Hall  
Devon Tower

Cox Convention Center  
Myriad Botanical Gardens

## FOR MORE INFORMATION:

Troy Humphrey

thumphrey@LRCRE.com

(405) 219-7500

114 N.W. 6<sup>th</sup> Street, Suite 206  
Oklahoma City, OK 73102  
Office: 405.231.5700  
[www.LRCRE.com](http://www.LRCRE.com)

The information above is believed to be accurate and reliable but is not warranted and may change without notice. Land Run Commercial Real Estate Advisors, LLC makes no guarantees, warranties or representations about the property and recommends tenants independent investigation as to the accuracy thereof.



# FOR LEASE - Office/Retail

First & Second Floor Space in Automobile Alley

615 & 617 N. Broadway, Oklahoma City OK 73102

First Level - 2,694 sf    Second Level - 2,845 sf



**FOR MORE INFORMATION:**

Troy Humphrey

thumphrey@LRCRE.com

(405) 219-7500

114 N.W. 6<sup>th</sup> Street, Suite 206  
Oklahoma City, OK 73102  
Office: 405.231.5700  
www.LRCRE.com

The information above is believed to be accurate and reliable but is not warranted and may change without notice. Land Run Commercial Real Estate Advisors, LLC makes no guarantees, warranties or representations about the property and recommends tenants independent investigation as to the accuracy thereof.