



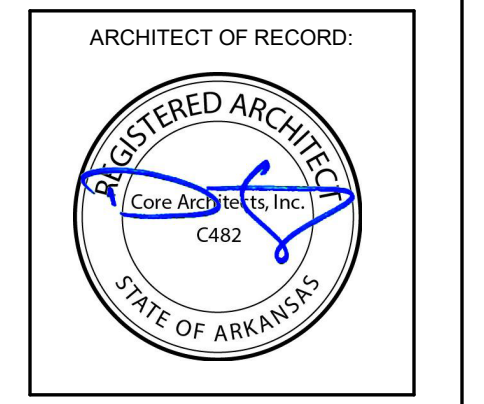
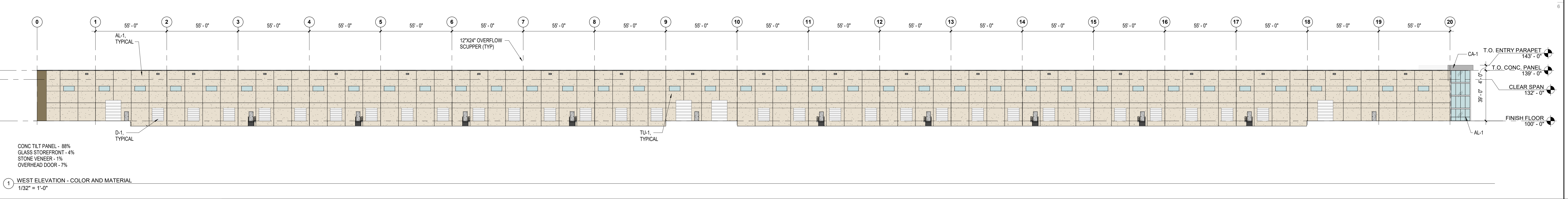
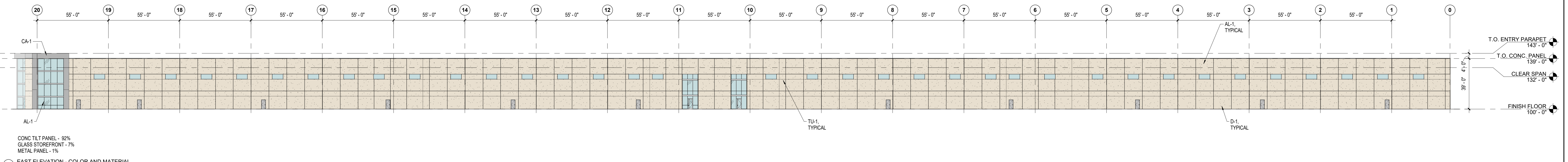
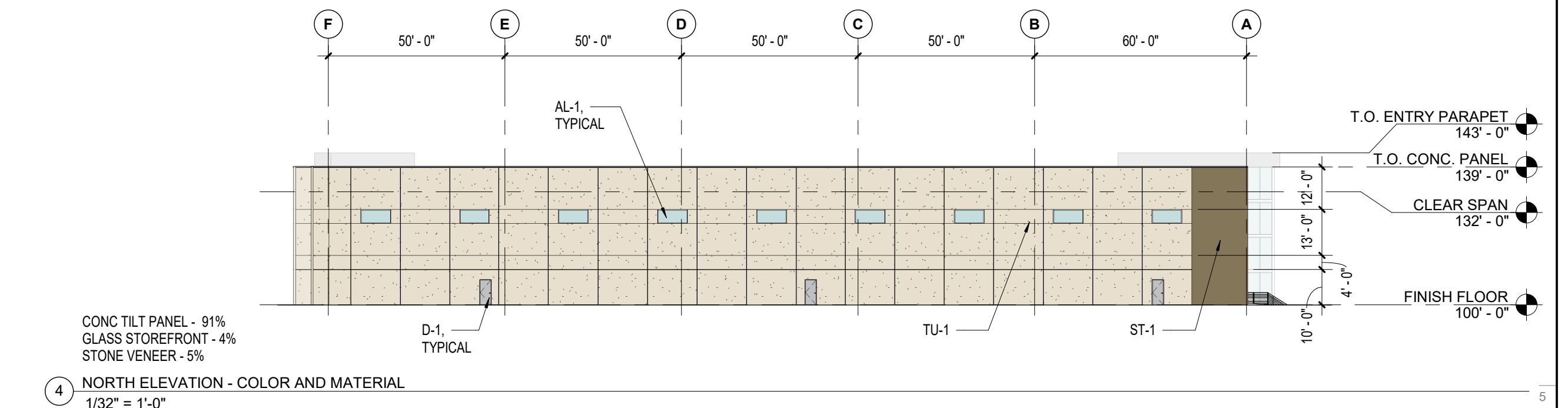
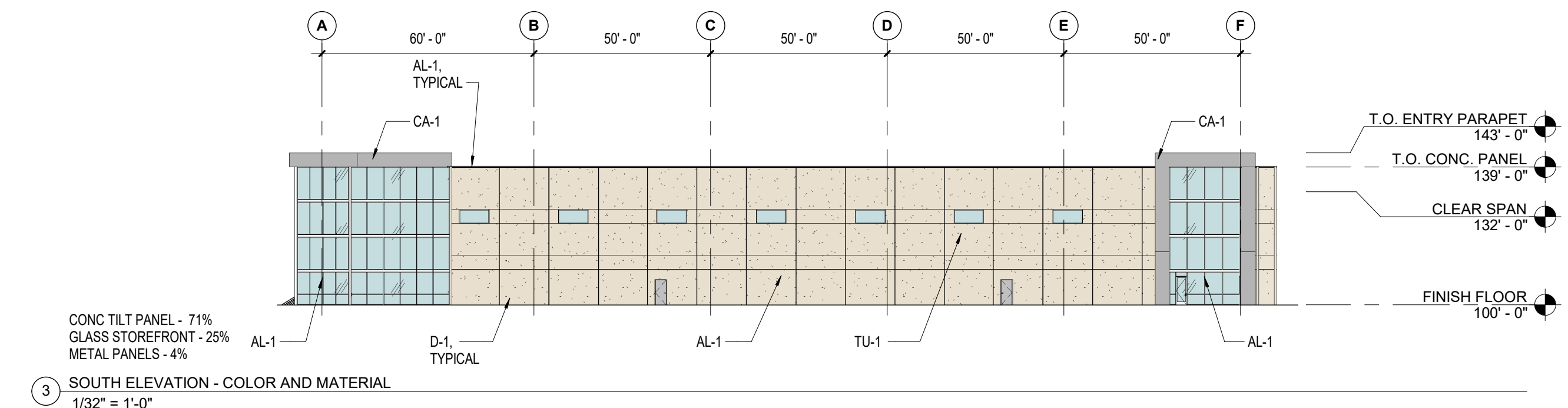
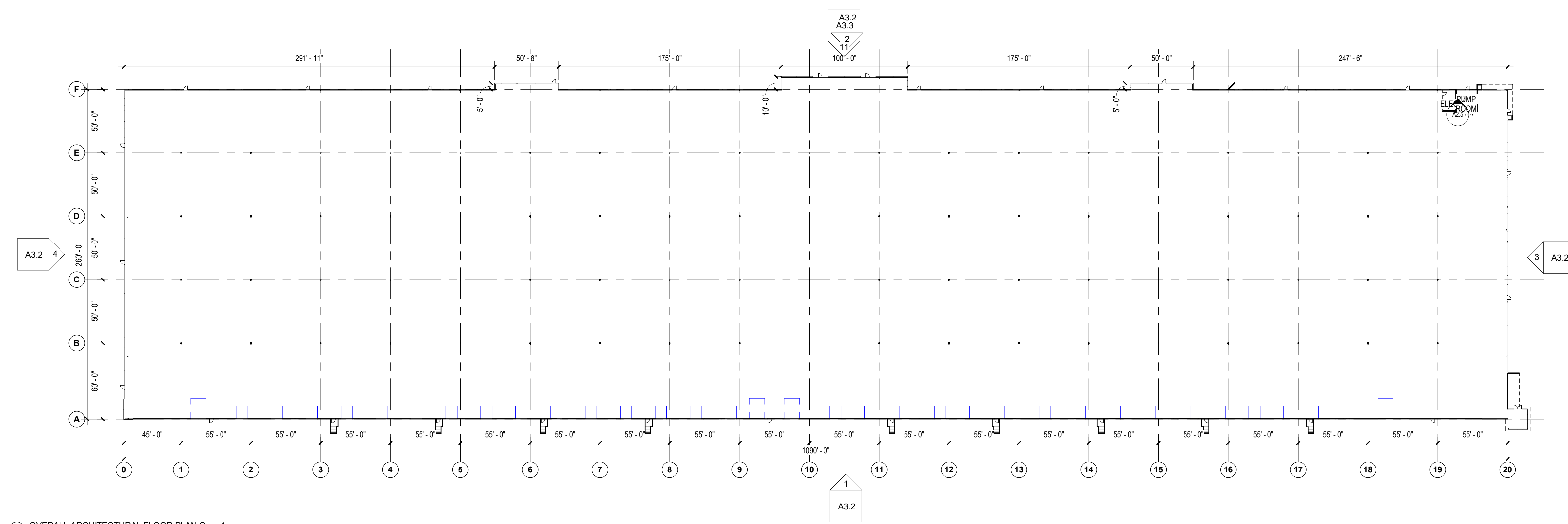
BIRDEYE



FRONT ENTRY

CODE STUDY		
PROJECT NAME: GATEWAY NORTH BUILDING 200	CODE DATA REQUIRED PER IBC / ARKANSAS 2021 SECTION 106.1.7	FIRE PROTECTION:
PROJECT LOCATION: BENTONVILLE, AR	(A) USE AND OCCUPANCY CLASSIFICATION (GROSS SQ. FOOTAGE)	REQUIRED: YES, PROVIDE EARLY SUPPRESSION FAST RESPONSE (ESFR) SPRINKLER SYSTEM AS REQUIRED PER IBC 2012 SECTION 910.
ZONING: I-2	(PER CHAPTER 3)	PROPOSED: YES, PROVIDE EARLY SUPPRESSION FAST RESPONSE (ESFR) SPRINKLER SYSTEM AS REQUIRED PER IBC 2012 SECTION 910.
APPLICABLE CODES:	STORAGE (S-1) 286,256 SF	HISTORIC: <input type="checkbox"/> YES <input checked="" type="checkbox"/> NO
ALL WORK AND MATERIALS SHALL BE IN FULL ACCORDANCE WITH THE REQUIREMENTS OF THESE CODES AND ALL APPLICABLE LOCAL ORDINANCES.	BUILDING OCCUPANCY TYPE: (S-1)	
2021 ARKANSAS FIRE PREVENTION CODE VOL. I (2021 International Fire Code (IFC) w/ Arkansas amendments)	(B) PROPOSED OCCUPANCY LOADS (Chapter 10 / Table 1004.1.2):	
2021 ARKANSAS FIRE PREVENTION CODE VOL. II - Commercial (2021 International Fire Code (IFC) w/ Arkansas amendments)	TOTAL OCCUPANTS PROPOSED: 954	
PLUMBING CODE: 2021 ARKANSAS PLUMBING CODE (APC)	(C) TYPE OF CONSTRUCTION (Chapter 6):	
GAS CODE: 2021 ARKANSAS FUEL GAS CODE (AFGC)	TYPE - IIB	
MECHANICAL CODE: 2021 ARKANSAS MECHANICAL CODE (AMC)	(D) ALLOWABLE HEIGHT AND BUILDING AREA PER FLOOR (Chapter 5 / Table 503):	
ELECTRICAL CODE: 2017 NATIONAL ELECTRIC CODE (NEC)	IB: 4 STOREYS (55 FT) / 332,500 (FRONTAGE INCREASE) (CHAPTER 5 / 503.3)	
FIRE CODE: 2021 INTERNATIONAL FIRE CODE (FC)	(D) FLOOR AREAS, AS FOLLOWS:	
	a. AREA, GROSS LEASABLE (Chapter 5 / Table 503):	
	N/A	
	b. AREA, NET FLOOR (Chapter 5 / Table 503):	
	N/A	
	(E) SEPARATION DISTANCES (Chapter 5 / Table 508.3.3):	
	N/A	

MATERIAL SCHEDULE	
TU-1 TILT-UP CONCRETE WALL PANELS	ST-1 TILT-UP CONCRETE WALL PANELS
MATERIAL: SMOOTH FINISH TILT-UP CONCRETE INSULATED WALL PANEL	MATERIAL: STRUCTURAL TILT-UP WALL C-NATURAL STONE VENEER
COLOR: PAINT - SHERWIN WILLIAMS RESERVED WHITE SW 7056	COLOR: STONE - TO MATCH ADJACENT BUILDINGS
MNF: TBD	MNF: TBD
AL-1 ALUMINUM FRAMED STOREFRONT	D-1 DOORS
MATERIAL: ALUMINUM STOREFRONT	MATERIAL: HOLLOW METAL FRAME
COLOR: CLEAR ANODIZED	COLOR: PAINT - SILVER
MNF: KAWNEER	MNF: TBD
CA-1 ARCHITECTURAL METAL PANELS	
MATERIAL: 24 GA ARCHITECTURAL METAL PANELS	
COLOR: FINISH TO MATCH STOREFRONT	
MNF: ALLUCABOND	



REVISION		
NO.	ISSUE	DATE

CONSULTANT:

CROSSMAR GATEWAY NORTH BUILDING 200
SW REGIONAL AIRPORT BLVD & RAINBOW RD

DRAWN BY: JMB
CHECKED BY: DS

PROJECT #:
DATE: 01.13.2023

DRAWING: A3.2
EXTERIOR BUILDING COLOR ELEVATIONS & FACADE AREAS