

# CVCB



CENTRAL  
VALLEY  
COMMERCIAL  
BROKERS, INC

# FOR SALE

## 2100 19<sup>th</sup> St.

APN: 003-351-17-00-0



## Property Details

- **\$ 1.5 Million**
- **9,000 sq. ft. Office/ Retail**
- **Centrally located downtown Bakersfield**
- **Leased Investment/ Owner, user**
- **Low rents with value-add**
- **Long term multi tenants ( 5 units )**
- **Ample on-site parking**



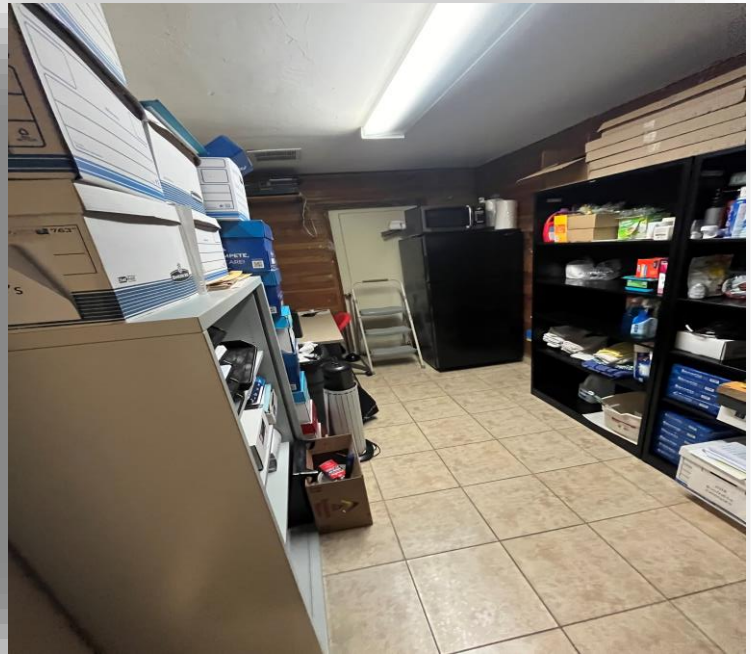
**HENRY E. MENDEZ, JR.**

CA RE #01127054 CA DRE #02084340 • Broker/ Principal  
hmendez@cvcbrokers.com • 661.404.4090 Office  
930 Truxtun Ave., Suite 101, Bakersfield, CA 93301

*The information contained herein may have been obtained from sources other than CVCB. We have not verified such information and make no guarantees, warranties, or representations about such information. It is your responsibility to independently confirm its accuracy and completeness prior to purchasing/leasing the property.*

# FOR SALE

2100 19<sup>th</sup> St.



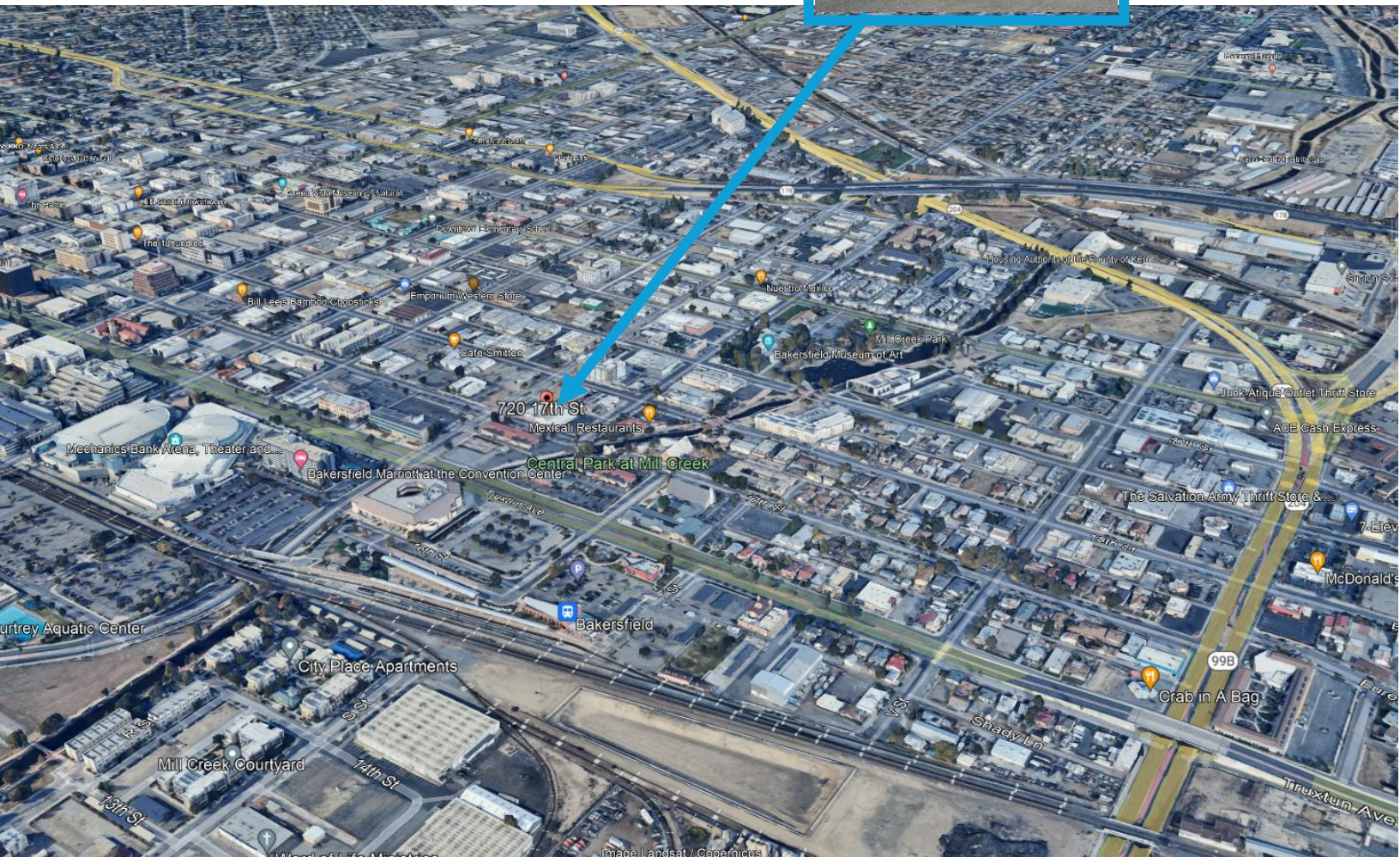
**HENRY E. MENDEZ, JR.**

CA RE #01127054 CA DRE #02084340 • Broker/ Principal  
hmendez@cvcbrokers.com • 661.404.4090 Office  
930 Truxtun Ave., Suite 101, Bakersfield, CA 93301

*The information contained herein may have been obtained from sources other than CVCB. We have not verified such information and make no guarantees, warranties, or representations about such information. It is your responsibility to independently confirm its accuracy and completeness prior to purchasing/leasing the property.*

# FOR SALE

2100 19<sup>th</sup> St.



**HENRY E. MENDEZ, JR.**

CA RE #01127054 CA DRE #02084340 • Broker/ Principal  
hmendez@cvcbrokers.com • 661.404.4090 Office  
930 Truxtun Ave., Suite 101, Bakersfield, CA 93301

*The information contained herein may have been obtained from sources other than CVCB. We have not verified such information and make no guarantees, warranties, or representations about such information. It is your responsibility to independently confirm its accuracy and completeness prior to purchasing/leasing the property.*