

67 Irving Place

Premier Restaurant Space Available Steps Away from Gramercy Park

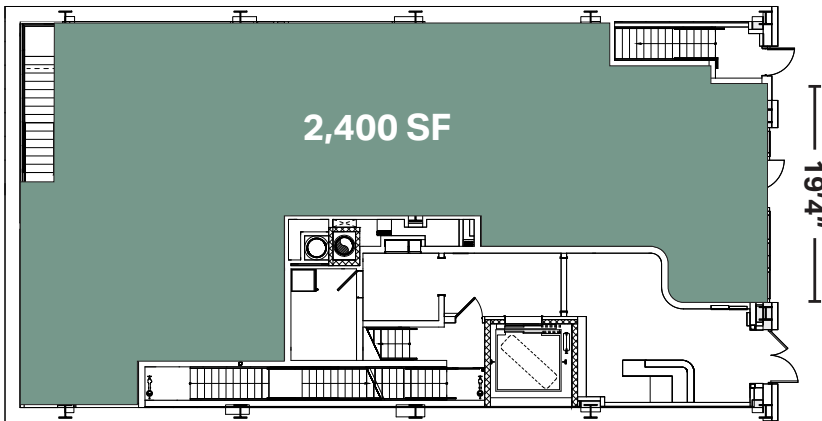
Ground-floor retail opportunity at the base of Morris Adjmi's latest ultra-luxury residential development

Prime location steps from Union Square and Gramercy Park

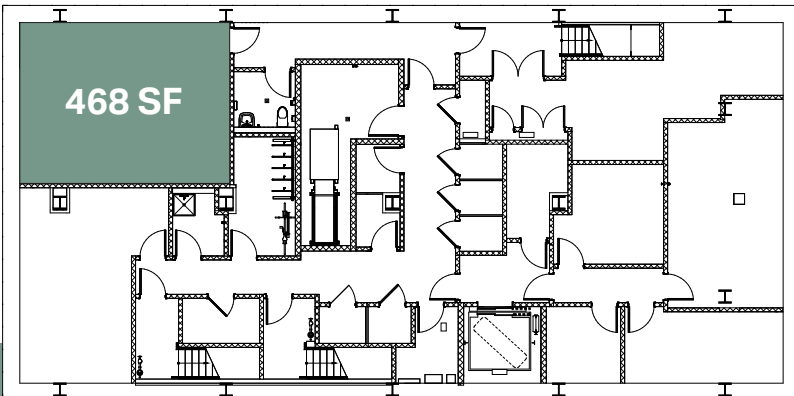
14' 9" Ceiling Height
(Ground Floor)

Available
Q2 2026

Ground Floor



Lower Level



Location Advantages

Closest retail block to Gramercy Park

Union Square Station access -
4th busiest NYC station
(Lines: L, N, Q, R, W, 4, 5, 6)

Key Neighbors

- Irving Farm Coffee Roasters
- Friend of a Farmer
- Pete's Tavern
- Caffe Panna
- Casa Mono
- Dear Irving



Contact Information

Nicholas Howell
Vice President
NHowell@cimgroup.com

Leah Barrett
Vice President
LBarrett@cimgroup.com

Property Owned & Operated by

