



Grant - Murray
REAL ESTATE, LLC
COMMERCIAL AND INVESTMENT BROKERAGE

150 N. McPherson Church Rd
Fayetteville, NC 28303
www.grantmurrayre.com



RETAIL PROPERTY FOR LEASE

219 HAY ST
Fayetteville, NC 28301

for more information

SUSAN EVANS

Broker

O: 910.829.1617 x208

C: 919.920.2140

susan@grantmurrayre.com



EXECUTIVE SUMMARY



OFFERING SUMMARY

Available SF:	4,000 SF
Lease Rate:	\$2,900.00 per month (MG)
Lot Size:	0.1 Acres
Year Built:	1930
Building Size:	8,646
Renovated:	2022
Zoning:	DT-1
Market:	Fayetteville
Submarket:	Downtown Fayetteville

PROPERTY OVERVIEW

This second-floor suite in Downtown Fayetteville provides a spacious commercial space of around 4,200 square feet. It includes private offices, open areas, a kitchen, and accessible restrooms. The interior features modern touches like new hardwood floors, glass offices, and brick walls. Updated facilities, such as modern restrooms and a kitchen, add functionality. The suite offers a nice view of downtown Fayetteville through large windows and is conveniently located above Pierro's Italian Restaurant. With a mix of style, practicality, and a prime location, it's an appealing option for businesses looking for a dynamic workspace.

LOCATION OVERVIEW

This commercial building is located on Hay St in the beautiful historic district of Downtown Fayetteville. Downtown Fayetteville is centrally located within the Fayetteville MSA making it easily accessible to the region and a 10-15 minute drive from the Fort Bragg gates. Within walking distance of the building are numerous restaurants, retailers, and the new Segra baseball stadium.

for more information

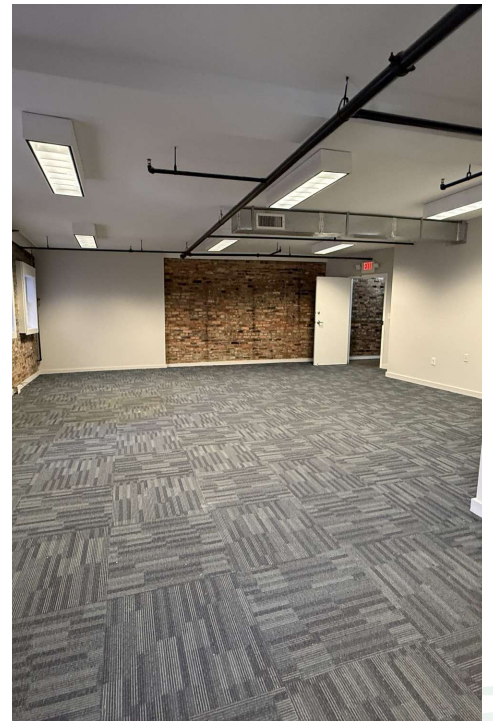
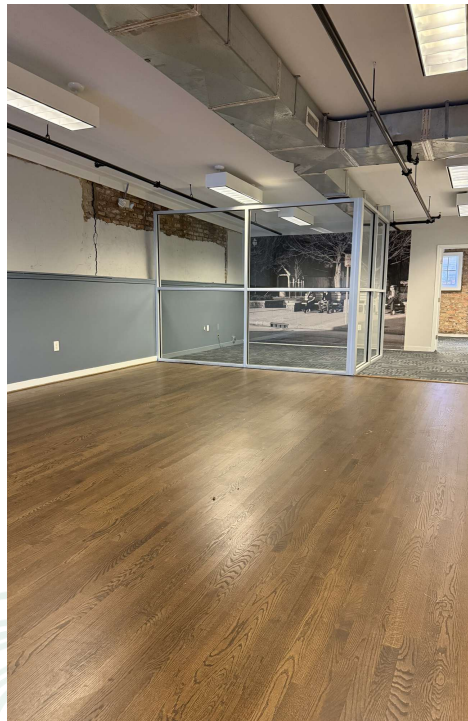
SUSAN EVANS
 Broker
 O: 910.829.1617 x208
 C: 919.920.2140
 susan@grantmurrayre.com



Grant - Murray
REAL ESTATE, LLC
COMMERCIAL AND INVESTMENT BROKERAGE

219 Hay St
FAYETTEVILLE, NC 28301

ADDITIONAL PHOTOS



for more information

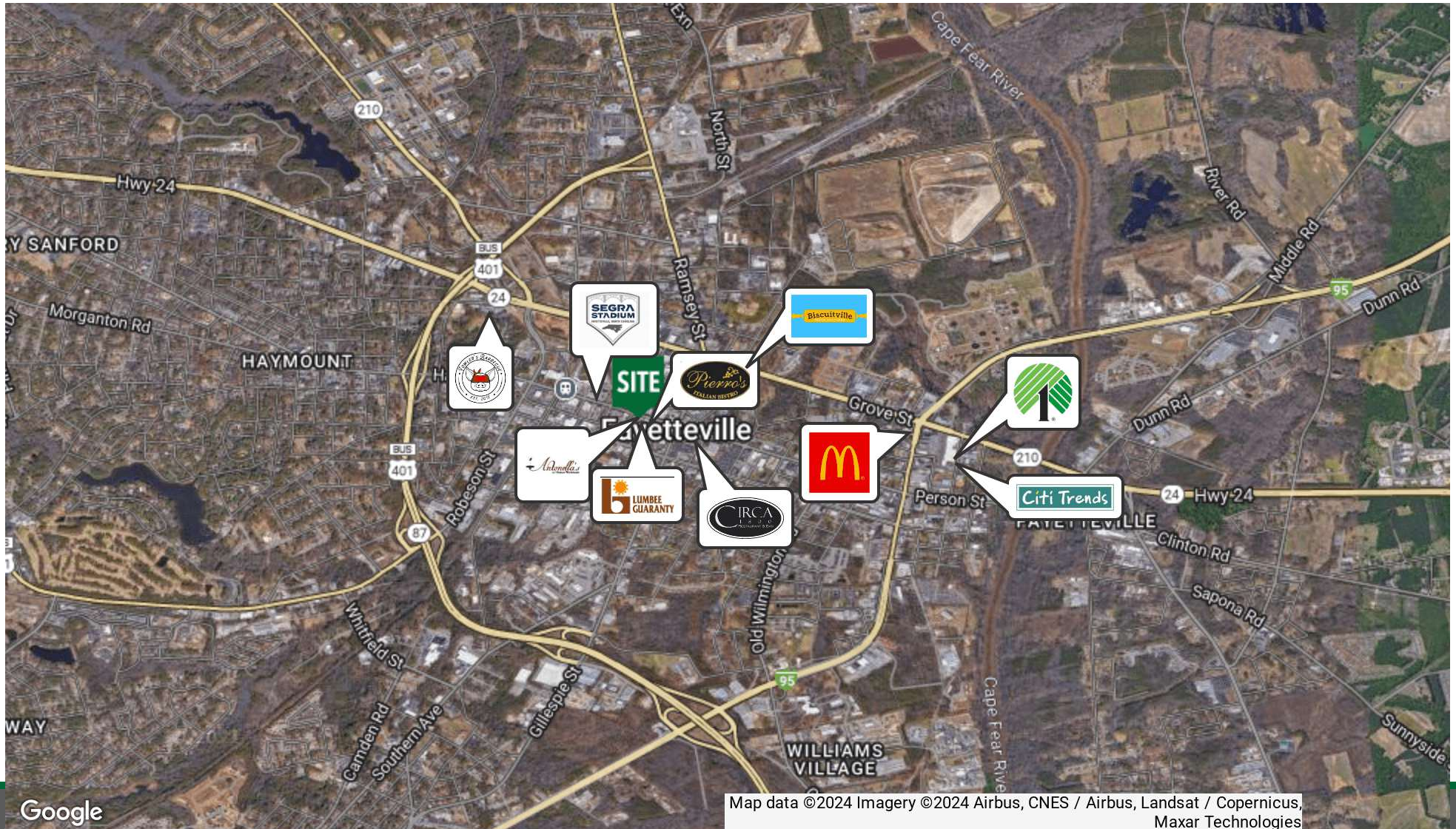
SUSAN EVANS

Broker

O: 910.829.1617 x208

C: 919.920.2140

susan@grantmurrayre.com



Map data ©2024 Imagery ©2024 Airbus, CNES / Airbus, Landsat / Copernicus, Maxar Technologies

Google

Broker
O: 910.829.1617 x208
C: 919.920.2140
susan@grantmurrayre.com



Grant - Murray
REAL ESTATE, LLC
COMMERCIAL AND INVESTMENT BROKERAGE