

3275 Geneva Avenue

DALY CITY, CA 94014



±14,200 SF FREESTANDING WAREHOUSE BUILDING FOR SALE

For more information, please contact:

KARL HANSEN | Lic. 01351383 | Executive Vice President | +1 415 706 6734 | karl.hansen@cbre.com

CBRE

Property Highlights

- ±14,200 SF Freestanding Building, ±10,650 SF Bldg Footprint
- ±3,550 SF of Mezzanine, ±1,800 SF of Ground Floor Office Space
- 2 Private Offices and Showroom Area, 28' Warehouse Clear Height
- 4 Drive-In Doors, Dual Street Frontage, Sprinklers and Skylights
- Drive Through Access, Divisible in Half or Quarters
- Available to Owner/User, Don't Disturb Tenant
- 11,025 SF Parcel with Two Street Frontages with Curb Cuts
- Asking: \$4,495,000



For more information, please contact:

KARL HANSEN | Lic. 01351383 | Executive Vice President | +1 415 706 6734 | karl.hansen@cbre.com

Site Plan

Macdonald Avenue



Light Commercial Zoning

- Building currently used for warehouse, distribution, sales and installation and repair of automotive accessories.



CLICK FOR
ADDITIONAL
ZONING
INFORMATION

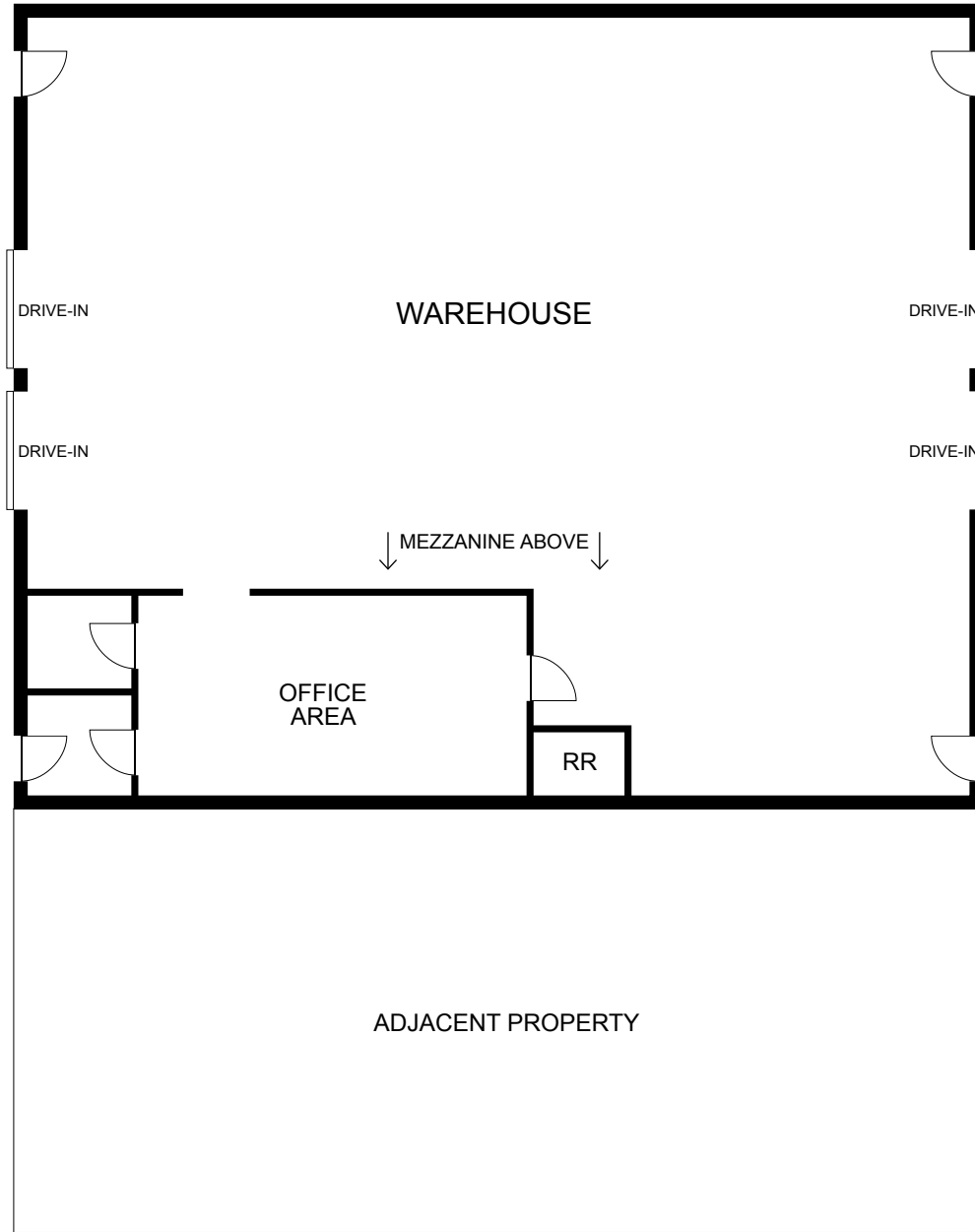
For more information, please contact:

KARL HANSEN | Lic. 01351383 | Executive Vice President | +1 415 706 6734 | karl.hansen@cbre.com

Floor Plan



GENEVA AVENUE



MACDONALD AVENUE

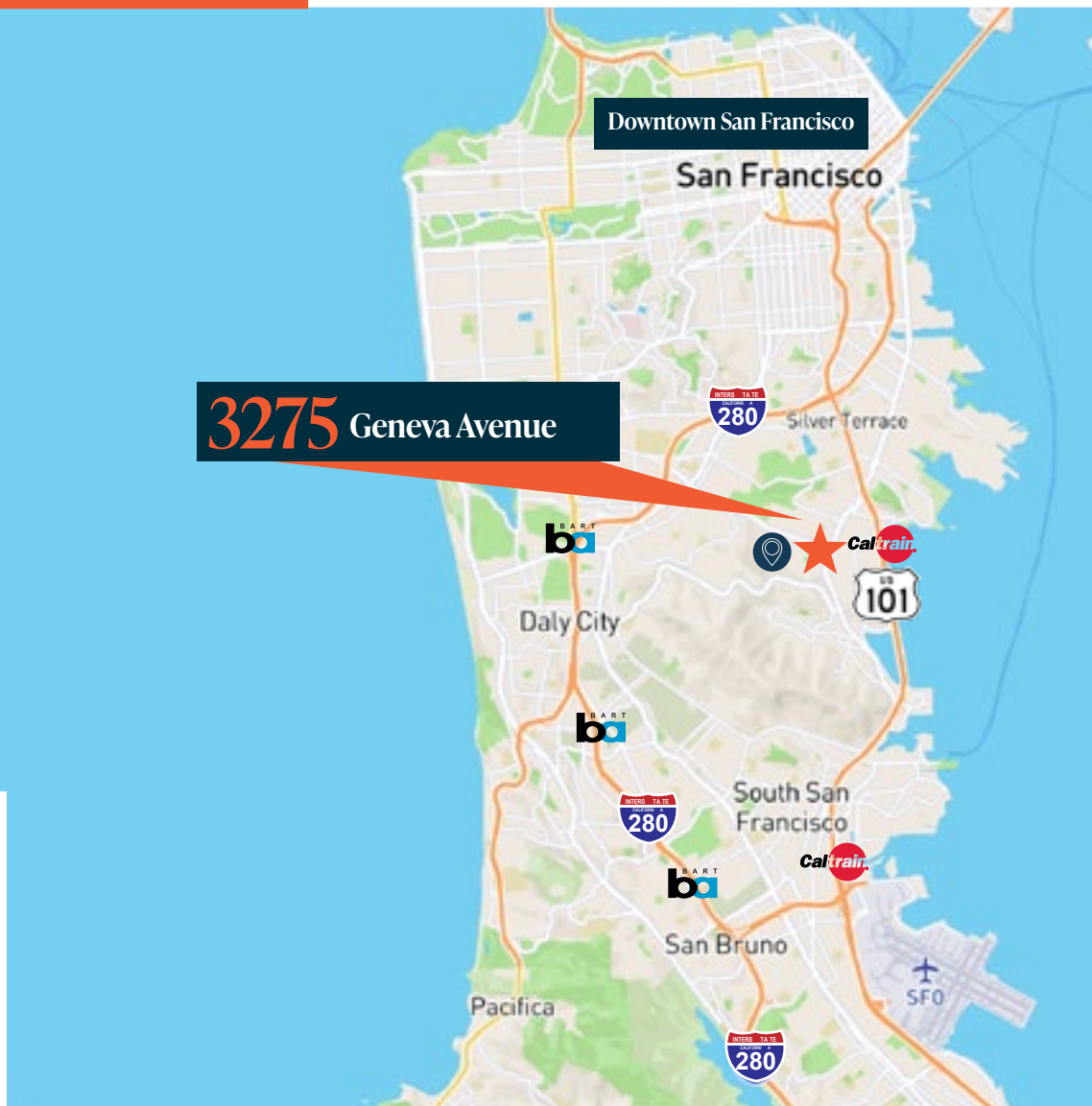
BAYSHORE BOULEVARD

For more information, please contact:

KARL HANSEN | Lic. 01351383 | Executive Vice President | +1 415 706 6734 | karl.hansen@cbre.com

Location Map

3275 Geneva Avenue



 Located on Daly City/San Francisco Border

 .9 miles (19 minute) walk to Bayshore Caltrain Station

 2.5 miles to Bart Station

 8 miles to San Francisco International Airport

 6 miles to Downtown San Francisco

For more information, please contact:

KARL HANSEN | Lic. 01351383 | Executive Vice President | +1 415 706 6734 | karl.hansen@cbre.com

Baylands Development



700 acre transit oriented planned residential and commercial development with 1,800 - 2,200 residential units and up to 7 million square feet of new commercial space



CLICK HERE TO
VIEW BAYLANDS
WEBSITE

For more information, please contact:

KARL HANSEN | Lic. 01351383 | Executive Vice President | +1 415 706 6734 | karl.hansen@cbre.com