




LangTree
Lake Norman

| NOW LEASING OFFICE SPACE |

Mooresville, NC

BUILDING H 1-4



105 Landings Drive | Mooresville, NC

PROPERTY FACTS

- Waterfront mixed use development with regional draw
- Excellent access and visibility
- Located directly at new I-77 exit 31
- 90,000 vehicles per day on I-77
- Adjacent to multiple shopping and dining options
- Ample parking

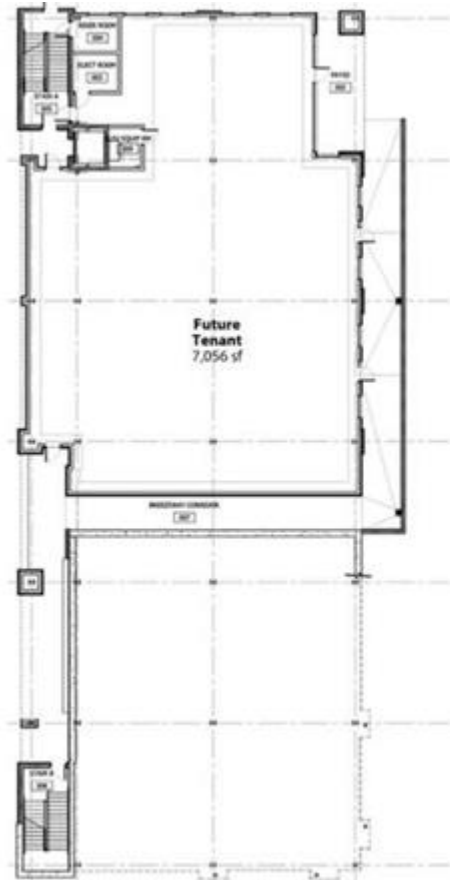


BUILDING FACTS

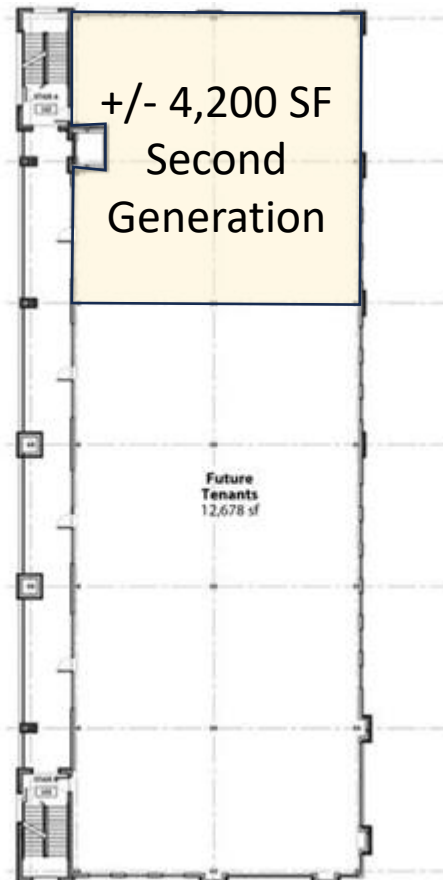
- 2 stories of office above retail
- Adjacent deck for parking
- Stairs and elevator available to access top floor
- Excellent signage opportunities with frontage on Langtree Rd.
- Significant TIA for credit tenants



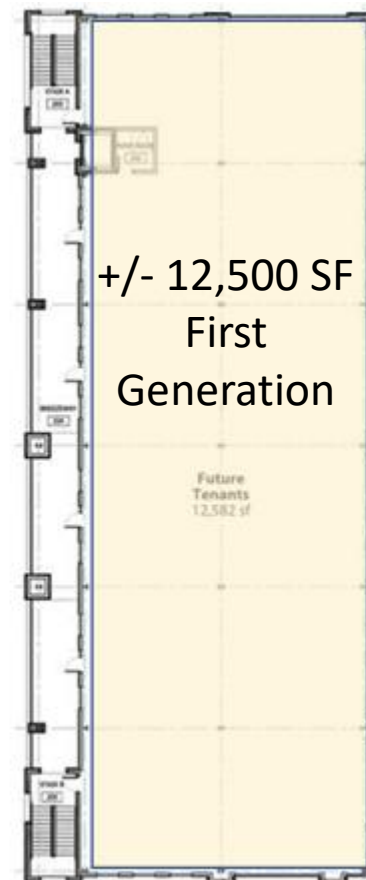
BUILDING H 1-4 FLOORPLAN



First Floor



Second Floor



Third Floor

SUITE 201 FLOORPLAN

