

THUNDERBIRD PALMS

*±6,736 SF Medical
Space for Lease*

5750 W THUNDERBIRD RD, BUILDING B
GLENDALE, AZ



Represented by

RACHAEL THOMPSON
602.513.5122
rachael.thompson@kidder.com

PERRY GABUZZI, CCIM
602.513.5116
perry.gabuzzi@kidder.com



Property Highlights

One-story, 6,736 square foot building

\$25.00 NNN lease rate

Parking ratio of 5.0/1,000 with covered parking available

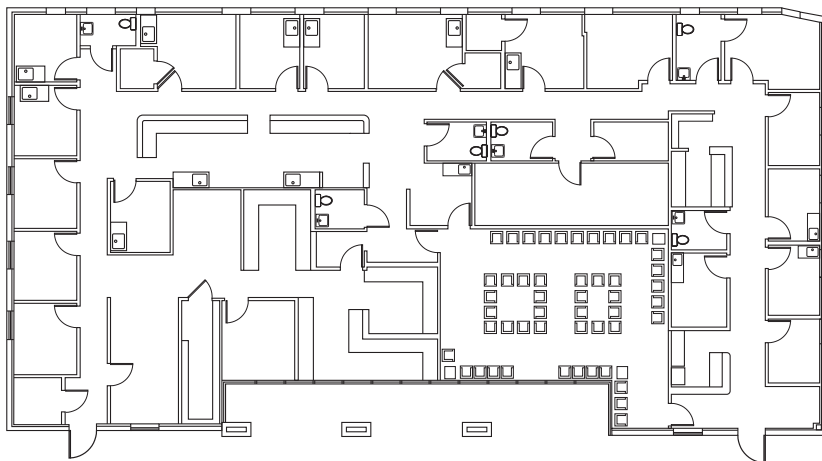
Located on heavily trafficked Thunderbird Rd across from Banner Thunderbird Medical Center

Close proximity to Loop 101 access

Building signage available

AVAILABILITIES

Building B 6,736 SF



Thunderbird Palms Medical Campus

Thunderbird Palms Medical Campus is a centrally located with convenient access to Banner Thunderbird Medical Center. The property also boasts a robust Tenant mix and drive-up patient access.

Thunderbird Palms is located less than 10 minutes from Loop 101, US-60, and I-17 access. The building signage and ample patient parking make this building a desirable location for any practice.



Strategically Located

36,961

VEHICLES PER DAY ON
THUNDERBIRD RD

1 MIN

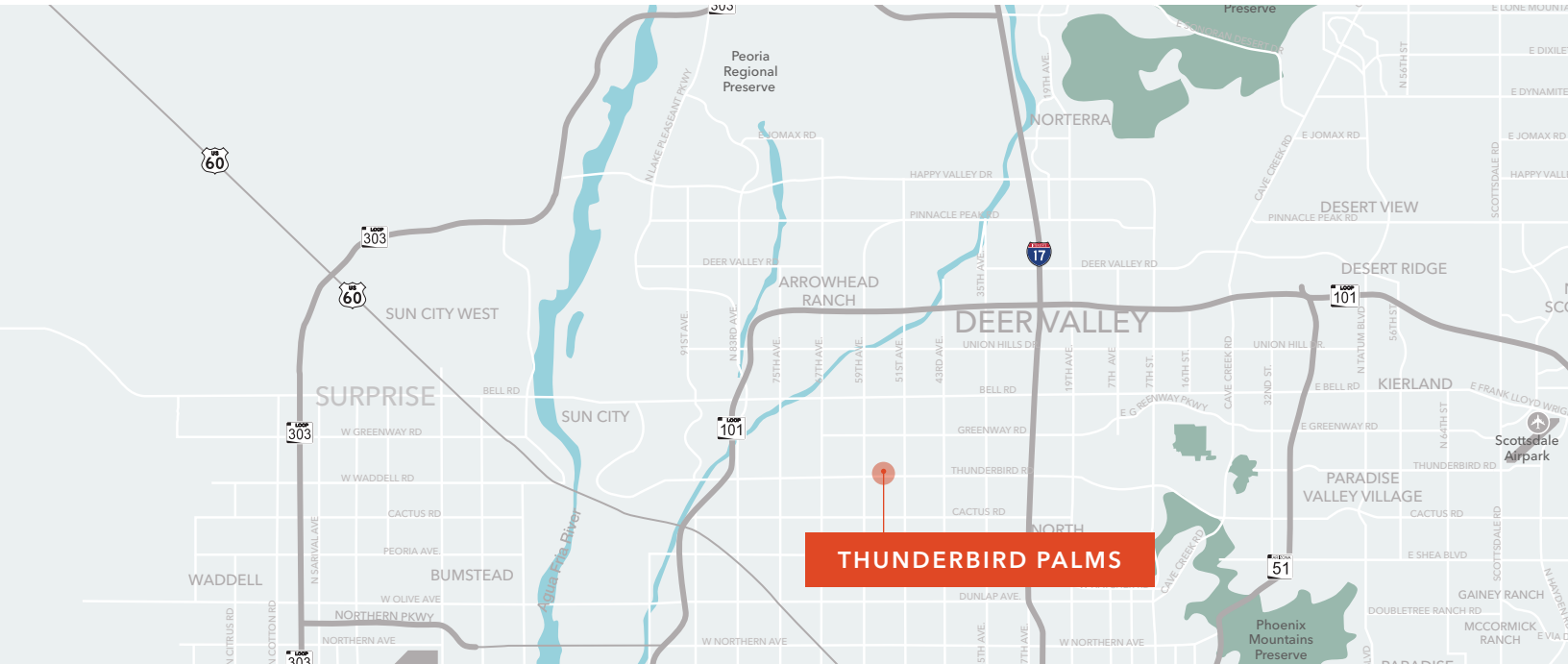
TO BANNER THUNDERBIRD
MEDICAL CENTER

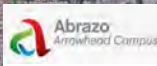
409,113

5-MILE POPULATION

8 MIN

TO LOOP 101 ACCESS





ARROWHEAD TOWNE CENTER / ARROWHEAD CROSSING



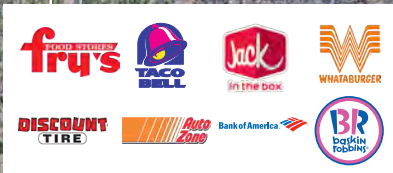
W UNION HILLS DR

LOOP 101

Peoria Sports Complex



W BELL RD



ASU West Campus

17

THUNDERBIRD PALMS



W THUNDERBIRD RD

N 43RD AVE

N 35TH AVE

1 MIN

TO BANNER THUNDERBIRD MEDICAL CENTER

8 MIN

TO LOOP 101 ACCESS

9 MIN

TO I-17 ACCESS

13 MIN

TO ABRAZO ARROWHEAD CAMPUS

For leasing information contact

RACHAEL THOMPSON
602.513.5122
rachael.thompson@kidder.com

PERRY GABUZZI, CCIM
602.513.5116
perry.gabuzzi@kidder.com



This information supplied herein is from sources we deem reliable. It is provided without any representation, warranty, or guarantee, expressed or implied as to its accuracy. Prospective Buyer or Tenant should conduct an independent investigation and verification of all matters deemed to be material, including, but not limited to, statements of income and expenses. Consult your attorney, accountant, or other professional advisor.