



1705 N Indiana St,  
Los Angeles, CA 90063



real

POWERED BY



# PROPERTY AERIAL MAP



 **USC** University of Southern California

**Los Angeles General Medical Center**

**Keck Hospital of USC**

INTERSTATE  
**5**

INTERSTATE  
**10**

**HAZARD PARK**  
Recreation Center







**MEDFORD ST**  
**N INDIANA ST**

**MEDFORD ST**  
**N INDIANA ST**

**W 112<sup>TH</sup> ST**

# PROPERTY OVERVIEW



**TYPE**  
Industrial



**SIZES**  
Factory - 17,649 SF (Built 1945)  
Office - 442 SF (Built 1982)  
Warehouse - 2,300 SF (Built 1971)  
Warehouse - 4,560 SF (Built 1959)  
Paint Shop - 2,480 SF (Built 1961)



**PRICE**  
\$6,100,000



**AMPS**  
Spray booth - 400 AMP  
Mill warehouse - 600 AMP

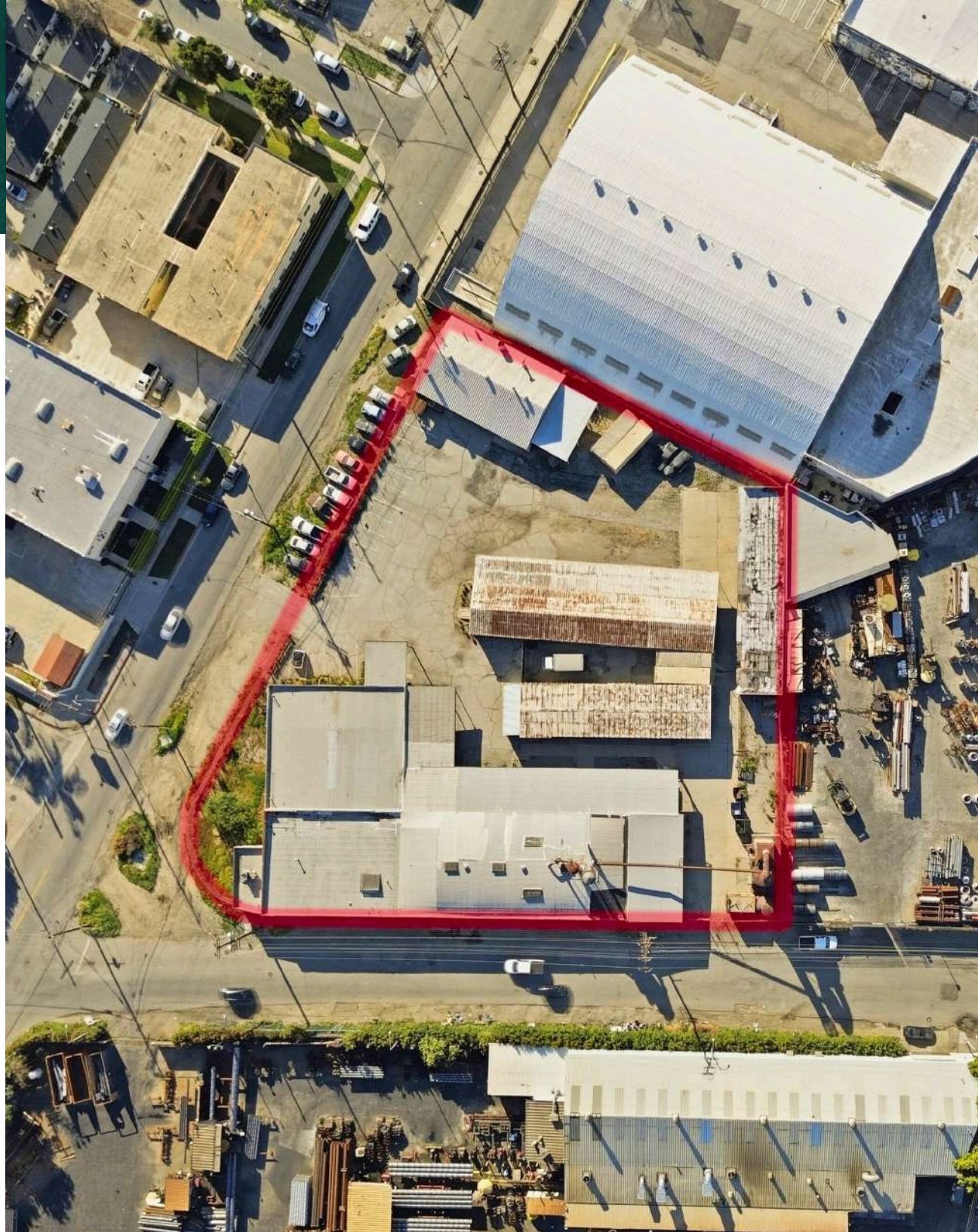


**PARKING**  
Ample Parking

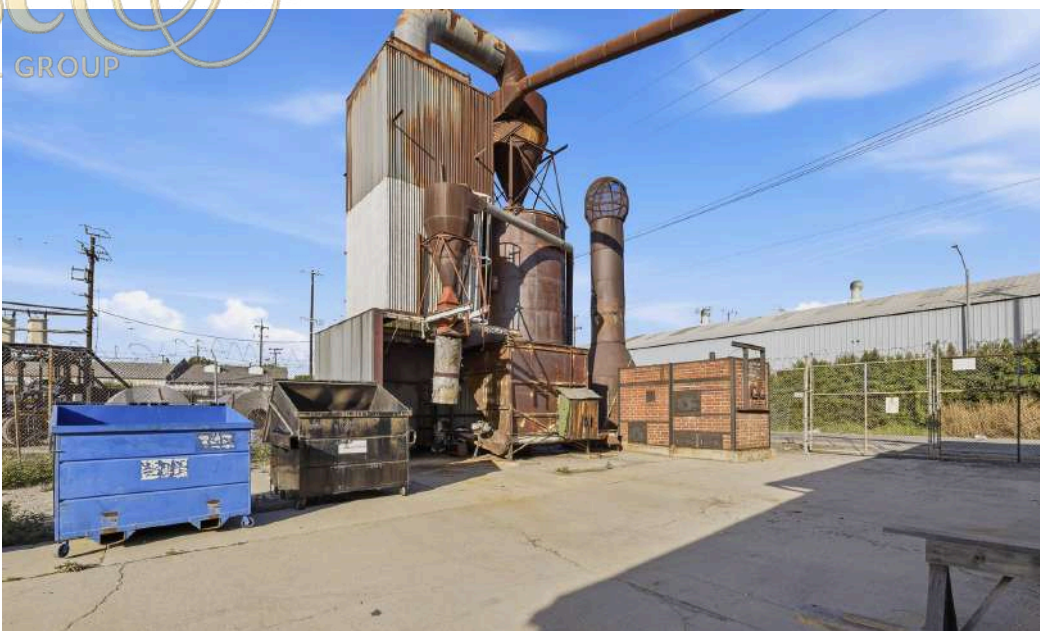
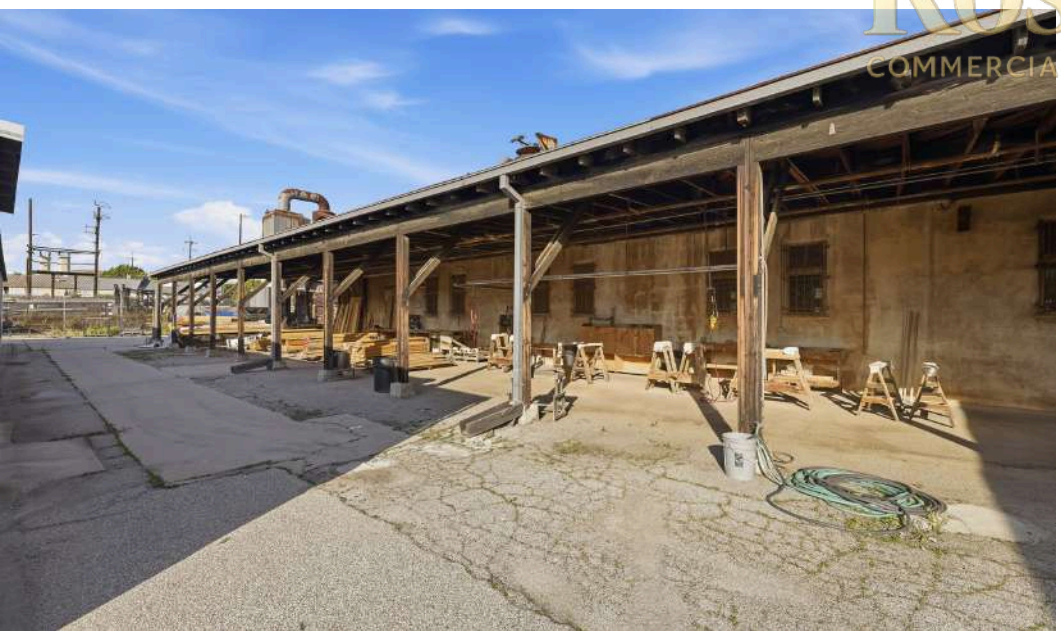


**ZONING**  
M2

**Rose & Co.**  
COMMERCIAL GROUP



# PROPERTY PHOTOS



Rose & Co.  
COMMERCIAL GROUP

# PROPERTY PHOTOS



Rose & Co.  
COMMERCIAL GROUP

# PROPERTY PHOTOS



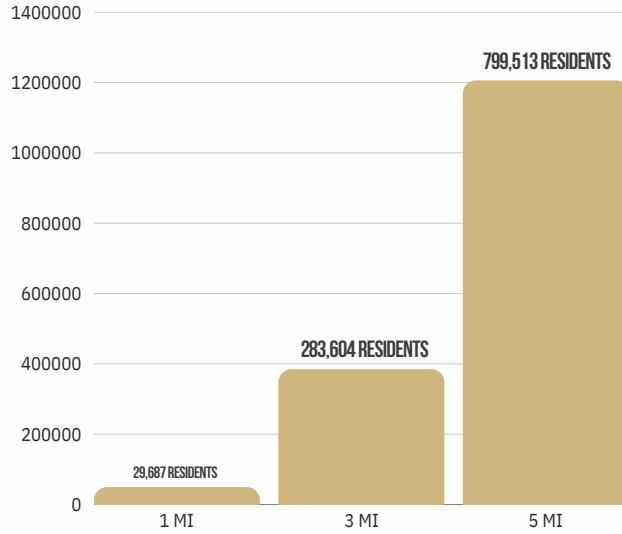
Rose & Co.  
COMMERCIAL GROUP



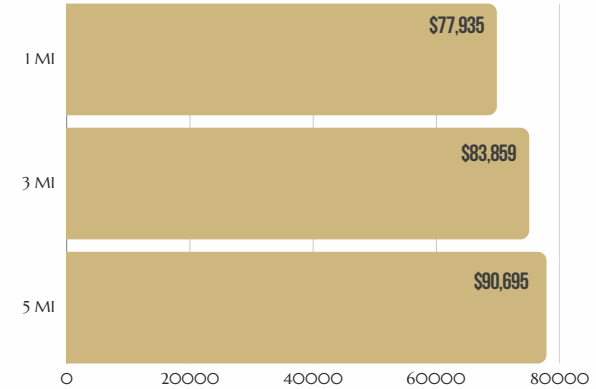
- Standalone Structures
- Low Site Coverage Ratio
- Well-Suited for Warehouse or Industrial Manufacturing Use
- Heavy Industrial Zoning Designation
- Secure, Privately Fenced and Paved Yard Area

# COMMUNITY PROFILE

## POPULATION



## AVERAGE HOUSEHOLD INCOME



## TRAFFIC COUNTS

ADDRESS	CROSS STREET	TRAFFIC VOLUME	DISTANCE FROM SUBJECT
Medford St	N Indiana St	4,097 vehicles/day	.09miles
Medford St	N Indiana St	4,099 vehicles/day	.09miles
Valley Blvd	Vineburn Ave	22,748 vehicles/day	.14miles
Valley Blvd	Vineburn Ave	23,079 vehicles/day	.14miles
Valley Blvd	N Soto St	22,615 vehicles/day	.17miles
Valley Blvd	N Soto St	22,899 vehicles/day	.17miles
Fishburn Ave	Medford St	1,502 vehicles/day	.18miles
Medford St	N Ditman Ave	2,616 vehicles/day	.21miles
Medford St	N Ditman Ave	2,625 vehicles/day	.21miles
Valley Blvd	Vineburn Ave	24,606 vehicles/day	.21miles



POWERED BY






## Specializing in Commercial Sales & Leases throughout Southern California



### ARIE ROSE

Founder | DRE 02226762

-  424.421.4241
-  arie@roseandcogroup.com
-  roseandcogroup.com