



Investment
Properties
Corporation

F O R S A L E

University Highlands

Tract F | Estero, FL 33928



Corner of Ben Hill Griffin Parkway and Everblades Parkway



*click
here!*



Google
Maps

CONTACT (239) 261-3400 x 111

Rob Carroll, ext. 111, rob@ipcnaples.com

Investment Properties Corporation of Naples
3838 Tamiami Trail North Suite 402
Naples Florida 34103-3586

Tel: 239-261-3400 Fax: 249-261-7579 www.ipcnaples.com

Licensed Real Estate Broker

The statement and figures presented herein, while not guaranteed, are secured from sources we believe authoritative.
Subject to prior sale, lease, withdrawal and price change without notice.



Investment
Properties
Corporation



University Highlands

Corner of Ben Hill Griffin Parkway and Everblades Parkway

Tract F | Estero, FL 33928

UNIVERSITY HIGHLANDS (PHASE #1) COMPLETED



AVAILABLE FOR SALE NOW

PHASE #2

PHASE #1

THREE OAKS BOULEVARD



Investment Properties Corporation of Naples
3838 Tamiami Trail North Suite 402
Naples Florida 34103-3586

Tel: 239-261-3400 Fax: 249-261-7579 www.ipcnaples.com

Licensed Real Estate Broker

The statement and figures presented herein, while not guaranteed, are secured from sources we believe authoritative.

Subject to prior sale, lease, withdrawal and price change without notice.



Investment
Properties
Corporation

University Highlands



Corner of Ben Hill Griffin Parkway and Everblades Parkway

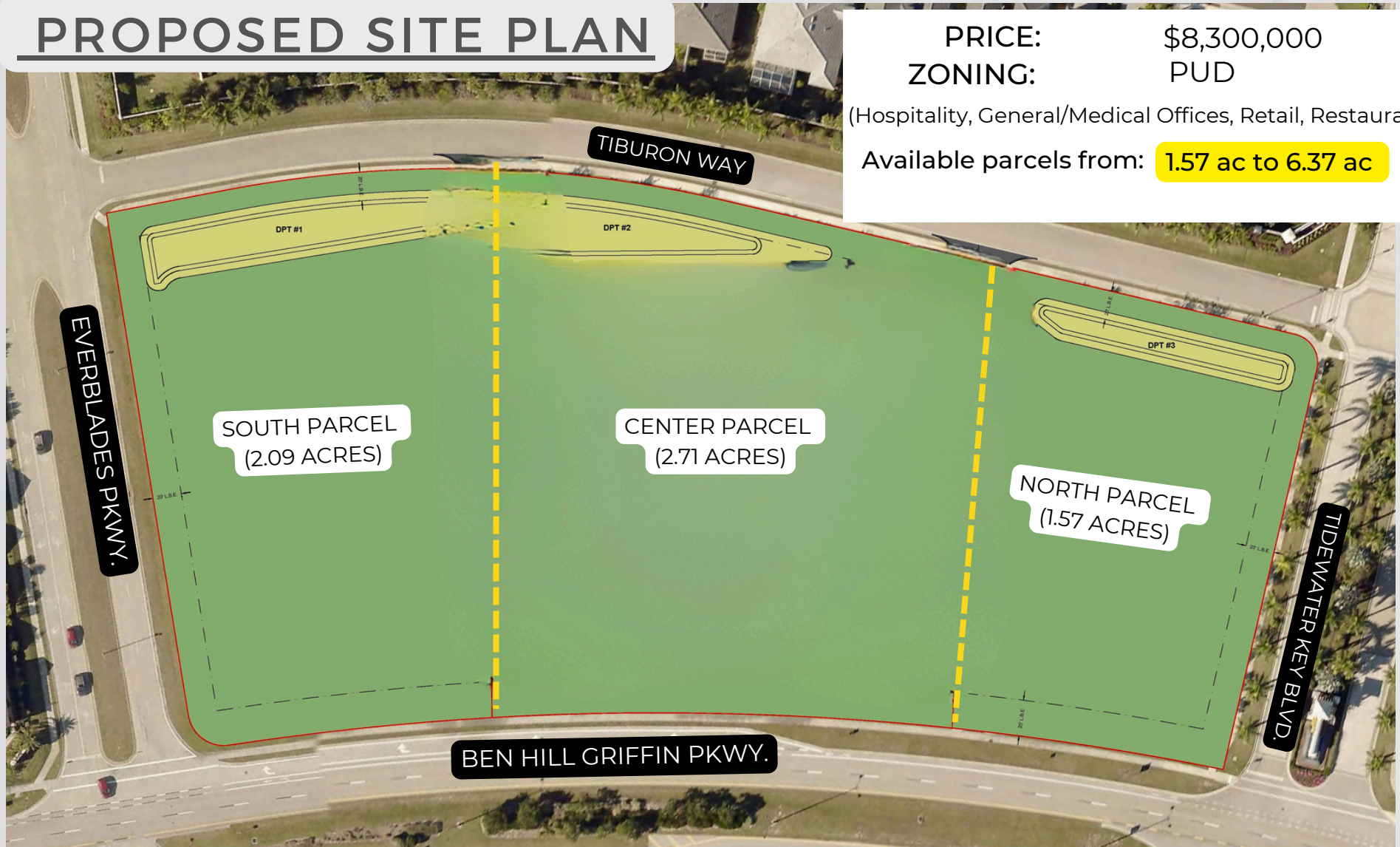
Tract F | Estero, FL 33928

PROPOSED SITE PLAN

PRICE: \$8,300,000
ZONING: PUD

(Hospitality, General/Medical Offices, Retail, Restaurant)

Available parcels from: 1.57 ac to 6.37 ac



Investment Properties Corporation of Naples
3838 Tamiami Trail North Suite 402
Naples Florida 34103-3586

Tel: 239-261-3400 Fax: 249-261-7579 www.ipcnaples.com

Licensed Real Estate Broker

The statement and figures presented herein, while not guaranteed, are secured from sources we believe authoritative.
Subject to prior sale, lease, withdrawal and price change without notice.



Investment
Properties
Corporation



University Highlands

Corner of Ben Hill Griffin Parkway and Everblades Parkway

Tract F | Estero, FL 33928



Proposed Site Rendering



Proposed Site Rendering

DEMOGRAPHICS (2025)	1 MILE	3 MILES	5 MILES
Est. Population	4,238	45,010	84,231
Est. Total Households	2,311	18,438	35,972
Est. Avg. Household Income	\$126,980	\$144,371	\$139,702
Avg. Traffic Count	32,000 along Ben Hill Griffin Parkway & 108,500 along I-75		

Investment Properties Corporation of Naples
3838 Tamiami Trail North Suite 402
Naples Florida 34103-3586

Tel: 239-261-3400 Fax: 249-261-7579 www.ipcnaples.com

Licensed Real Estate Broker

The statement and figures presented herein, while not guaranteed, are secured from sources we believe authoritative.
Subject to prior sale, lease, withdrawal and price change without notice.



**Investment
Properties
Corporation**



University Highlands

Corner of Ben Hill Griffin Parkway and Everblades Parkway

Tract F | Estero, FL 33928

LOCATION HIGHLIGHTS



Founded in 1991,
FGCU now has
15,000+ students.
4,000 live on
campus.



University Village is
a new development
located just south
of FGCU. Features
retailers,
restaurant, and 264
residential units.

Subject Property



LOCATED WITHIN A 3 MILE RADIUS

+ over 10,000 new homes under construction off Corkscrew Rd.

SPRINGS
apartments
Approx. 203
apartments

LONGITUDE
Approx. 420
apartments

Hertz Arena
170K+ SF arena
Holds 8.5K people for
sports, concerts,
events

Grandezza
1,000+
homes

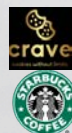


Villagio
514
condos

Tidewater
380 homes

THE REEF
STUDENT LIVING
Approx. 450+
off-campus
apartments

COURTYARDS
AT ESTERO
apartment homes
136
Townhome
Apartments



spavio
DRY CLEANERS
ESTERO SMILES
DENTISTRY



Investment Properties Corporation of Naples
3838 Tamiami Trail North Suite 402
Naples Florida 34103-3586

Tel: 239-261-3400 Fax: 249-261-7579 www.ipcnaples.com

Licensed Real Estate Broker

The statement and figures presented herein, while not guaranteed, are secured from sources we believe authoritative.
Subject to prior sale, lease, withdrawal and price change without notice.