

FOR SALE OR LEASE

2811 & 2815 Locust St

St. Louis, MO 63103



FOR MORE INFORMATION CONTACT:

Louis Copilevitz | (314) 746-1451
lcopilevitz@gershmancre.com

Lou Panopoulos | (314) 746-1428
lpanopoulos@gershmancre.com



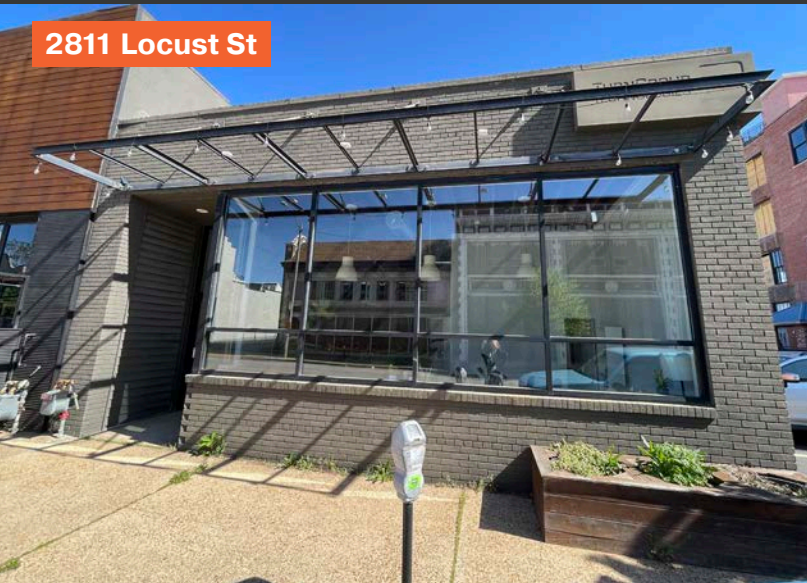
Gershman
Commercial Real Estate



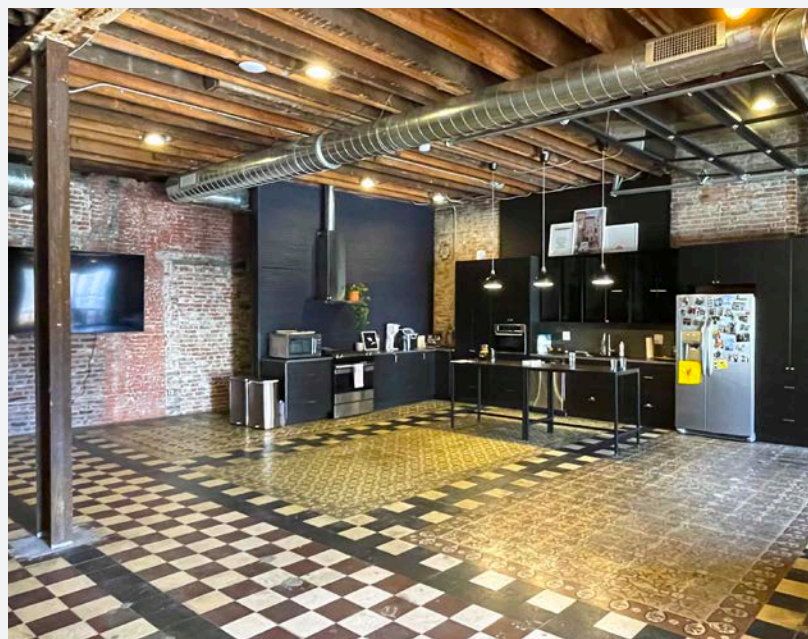
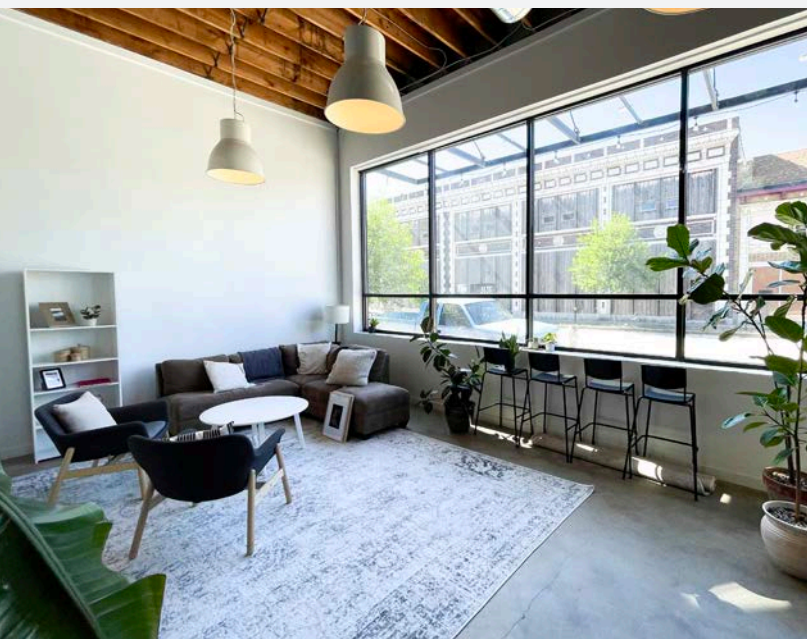
8,577 SF OFFICE BUILDING FOR SALE OR LEASE

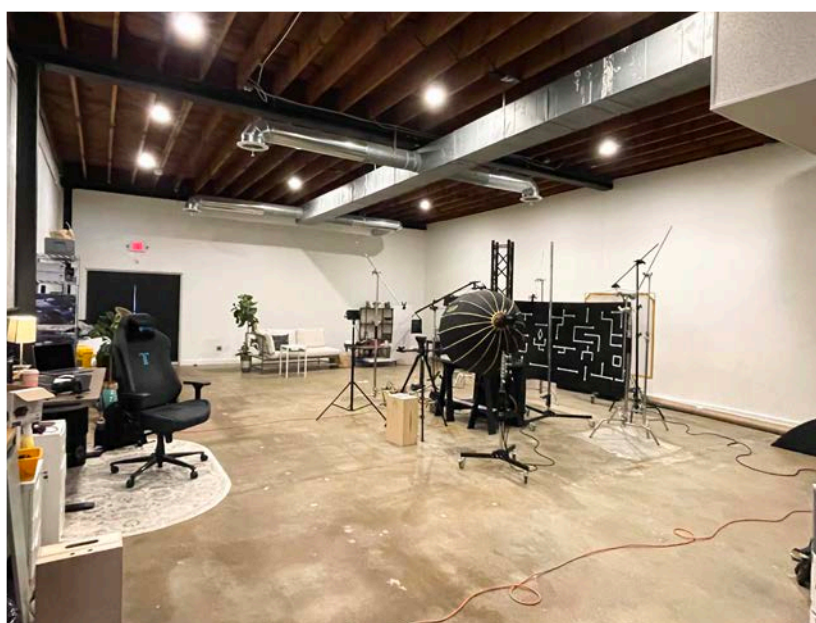
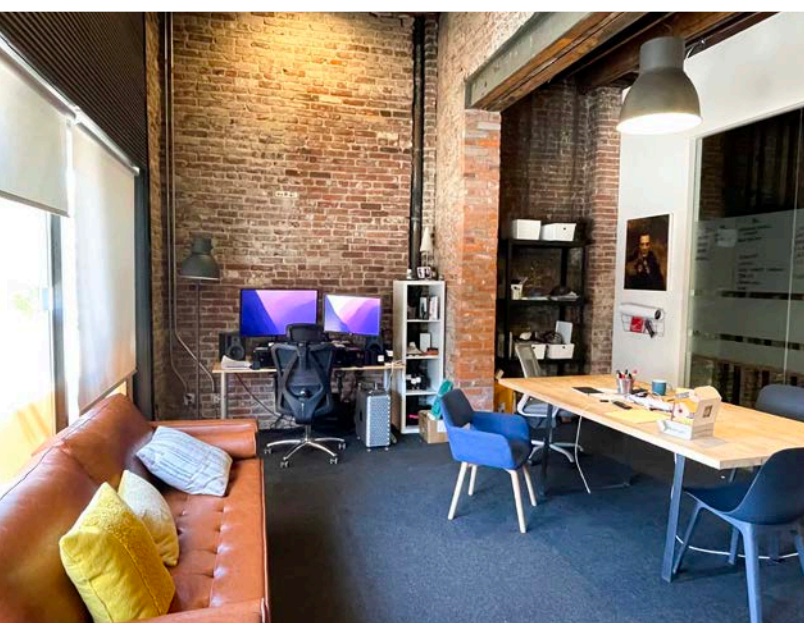
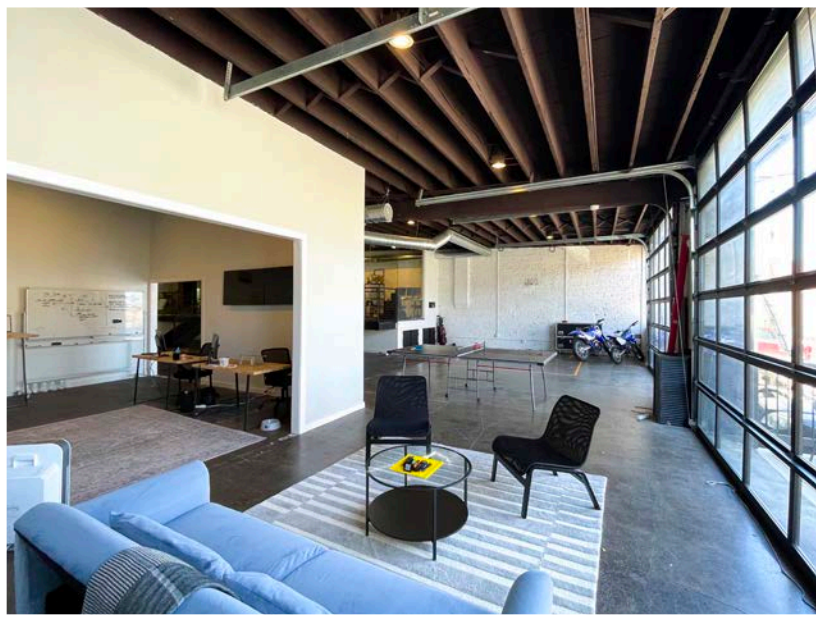
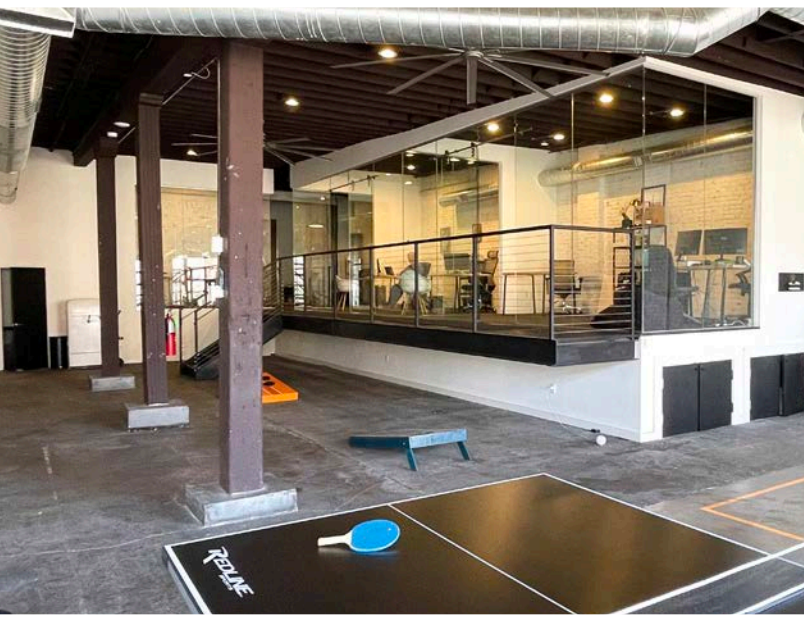
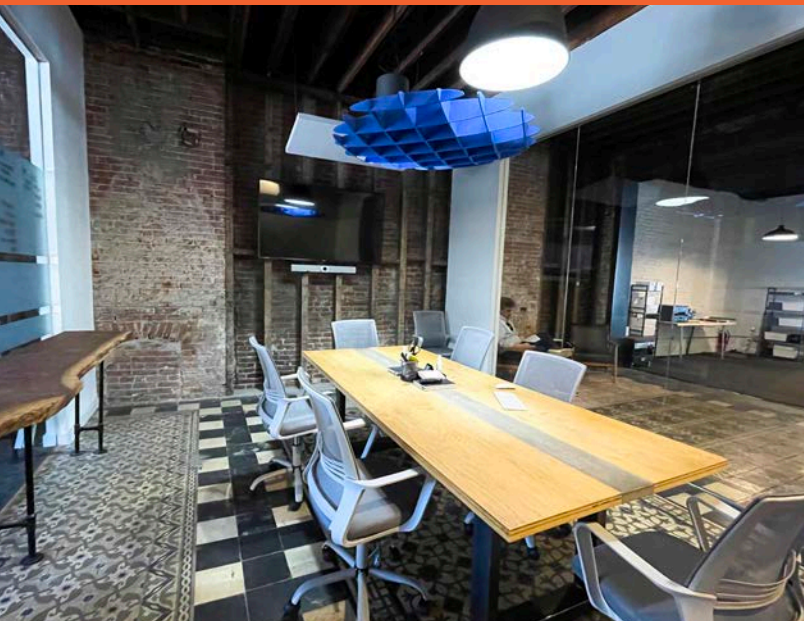
- Available January 1, 2026
- Owner/User Opportunity
- Located in the Newly Named “City Commons” Neighborhood in Mid-Town
- Recently Renovated, Unique, Creative Space
- 2 Contiguous Buildings: 2811 Locust St (3,277 SF) & 2815 Locust St (5,300 SF)
- Buildings May Be Purchased Separately
- Sale Price: \$1,350,000
- Lease Rate: \$16.50 SF (Modified Gross)

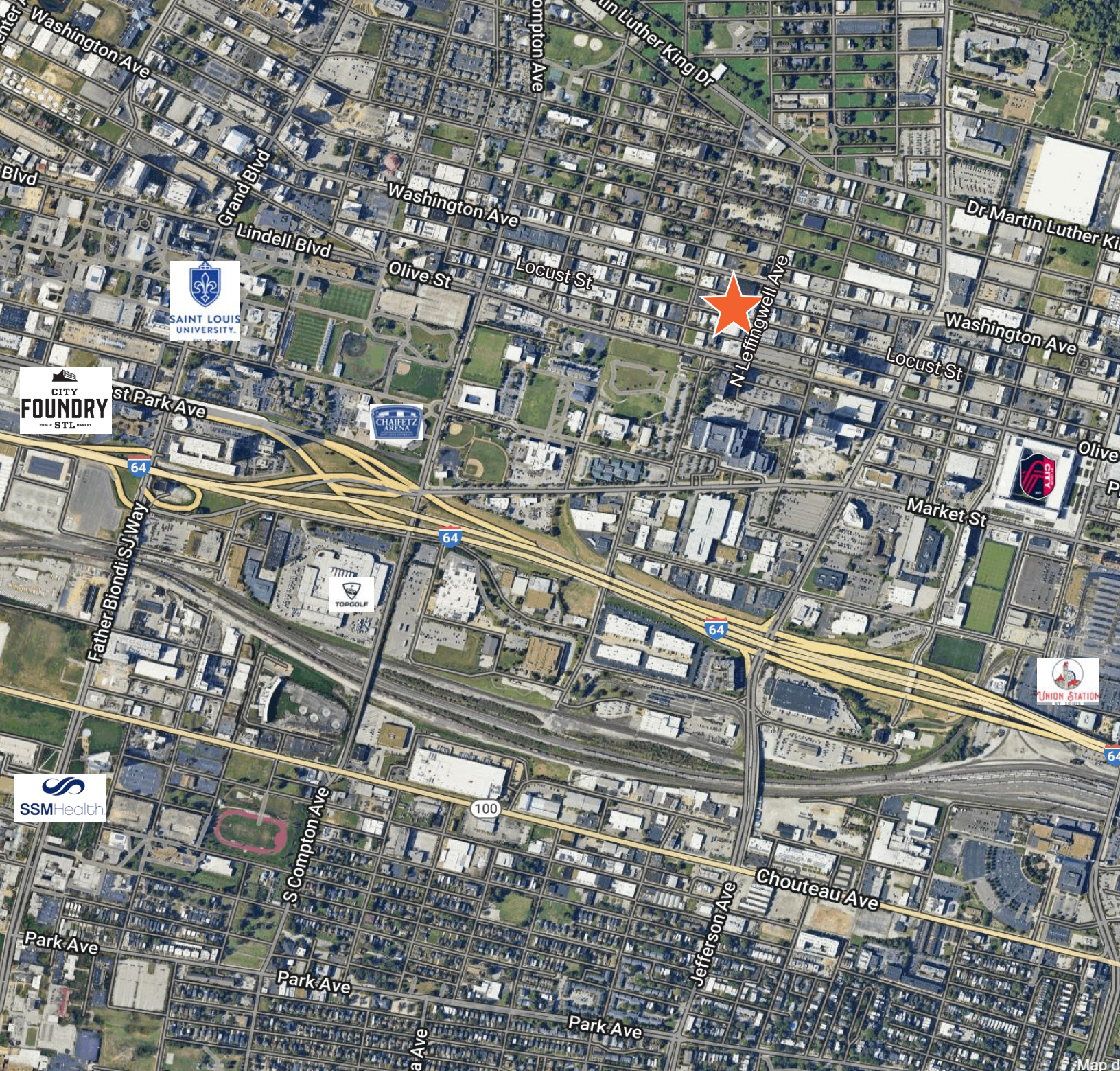
2811 Locust St



2815 Locust St







FOR MORE INFORMATION CONTACT:

Louis Copilevitz | (314) 746-1451
lcopilevitz@gershmancre.com

Lou Panopoulos | (314) 746-1428
lpanopoulos@gershmancre.com



The information contained herein is not warranted, although it has been obtained from the owner of the property or from other sources we deem reliable. It is subject to change without notice. Owner and broker make no representation as to the environmental condition of the property and recommend purchaser's/tenant's independent investigation.