

1404 E CENTRAL AVENUE, SUITE 6, BENTONVILLE | ARCHER'S BUSINESS PARK

OFFICE SPACE FOR LEASE



OKSANA DEMARIS
PRINCIPAL
479.372.0033
OKSANA@FOCUSCREGROUP.COM

FOCUS
COMMERCIAL REAL ESTATE

BUTCH GURGANUS
CO-MANAGING DIRECTOR
479.644.7266
BUTCH@FOCUSCREGROUP.COM

5512 W WALSH LN, SUITE 201, ROGERS, AR | 479.254.7000 | FOCUSCREGROUP.COM

LEASE OVERVIEW

SUITE 7: 1,500 SF

RENTAL RATE: \$26.00 PSF

LEASE TYPE: +Utilities

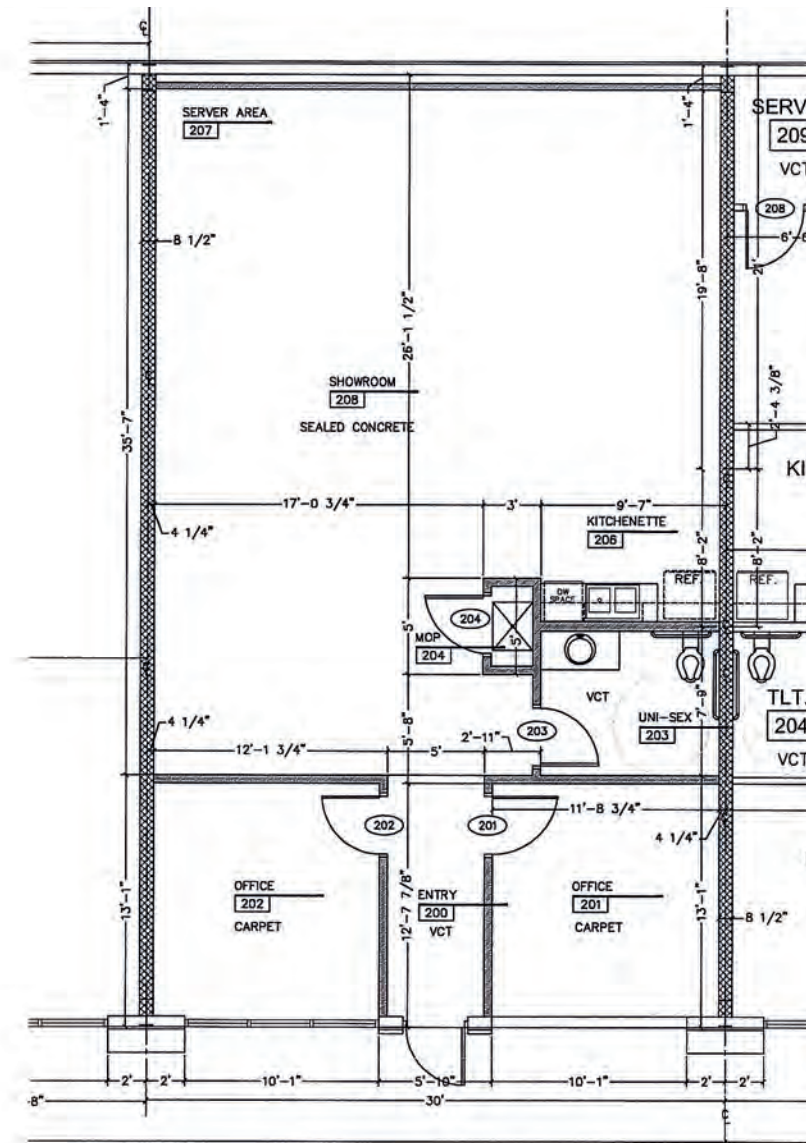
SITE HIGHLIGHTS

PRIME BENTONVILLE LOCATION

- DIRECTLY OFF INTERSTATE 49 WITH HIGH VISIBILITY & EASY ACCESS.
- ONLY 0.5-MILE FROM THE NEW WALMART HOME OFFICE CAMPUS.

OFFICE PARK AMENITIES

- CLOSE TO RESTAURANTS, RETAIL, AND DOWNTOWN BENTONVILLE SQUARE, CRYSTAL BRIDGES, ALICE WALTON SCHOOL OF MEDICINE, WHOLE HEALTH INSTITUTE AND TRAILHEADS



OKSANA DEMARIS
PRINCIPAL
479.372.0033
OKSANA@FOCUSCREGROUP.COM



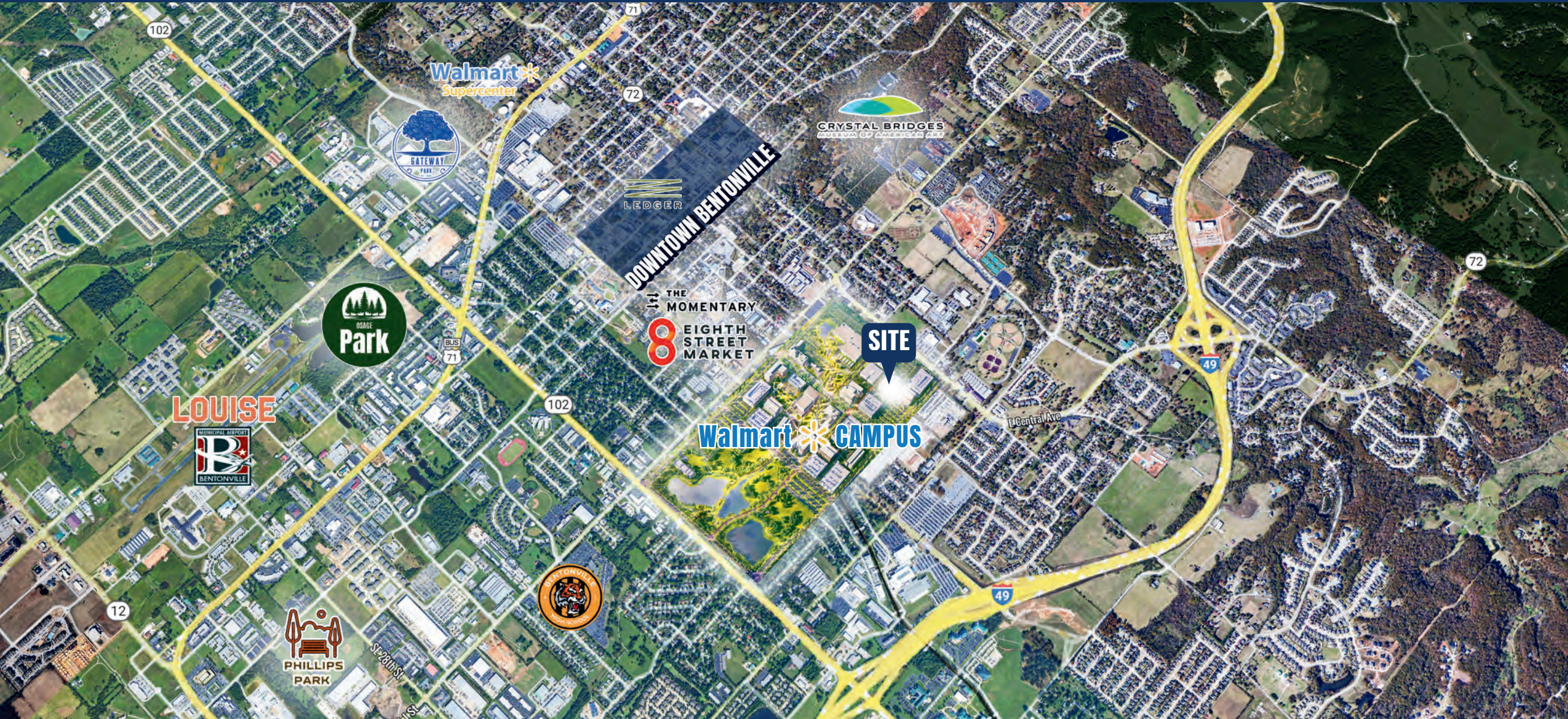
BUTCH GURGANUS
CO-MANAGING DIRECTOR
479.644.7266
BUTCH@FOCUSCREGROUP.COM



OKSANA DEMARIS
PRINCIPAL
479.372.0033
OKSANA@FOCUSCREGROUP.COM



BUTCH GURGANUS
CO-MANAGING DIRECTOR
479.644.7266
BUTCH@FOCUSCREGROUP.COM



OKSANA DEMARIS
PRINCIPAL
479.372.0033
OKSANA@FOCUSCREGROUP.COM



BUTCH GURGANUS
CO-MANAGING DIRECTOR
479.644.7266
BUTCH@FOCUSCREGROUP.COM