



# 412 HIGHWAY 90

- Office/Retail/Salon Commercial Units
- 800 -2,400 Sq Ft Units
- High visibility, traffic counts
- Starting at \$995



**FOR LEASE**

**412 Highway 90  
Bay St. Louis, MS  
39520**

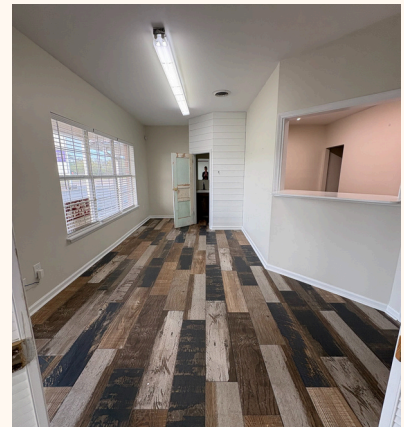
**Contact Us:**  
985-290-7700  
help@899-rent





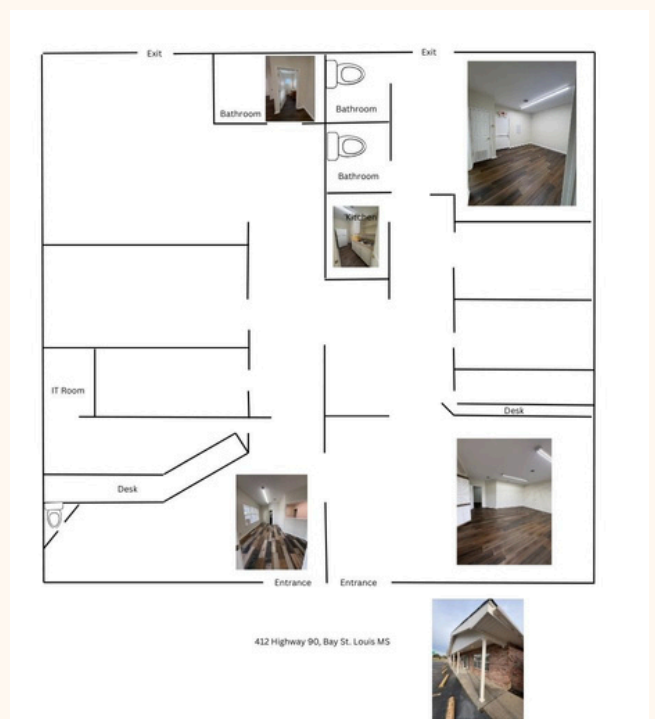
# 412 HIGHWAY 90

- Unit 3/4
- Base rent \$2,540
- Triple Net \$680
- Minimum 1 year lease term



## FOR LEASE

**412 Highway 90    Contact Us:**  
**Bay St. Louis, MS 985-290-7700**  
**39520                      help@899-rent**

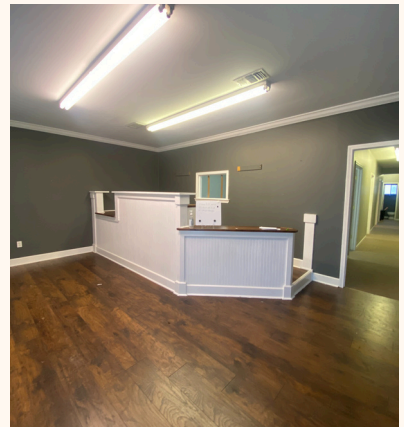






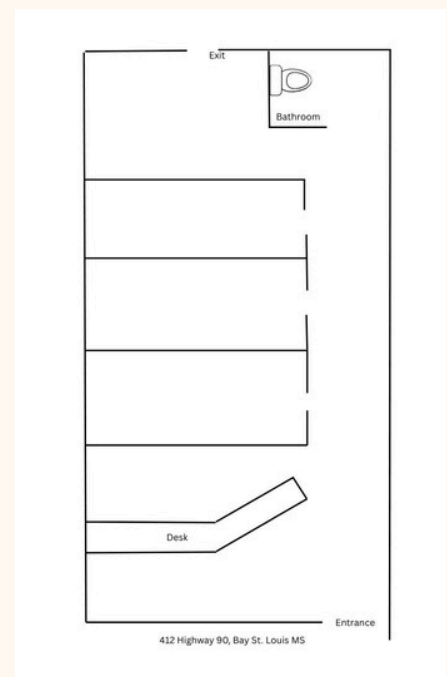
# 412 HIGHWAY 90

- Unit 2
- 1008 Sq Ft
- Base rent \$1,200
- Triple Net \$340
- Minimum 1 year lease term



## FOR LEASE

**412 Highway 90    Contact Us:**  
**Bay St. Louis, MS 39520    985-290-7700**  
**help@899-rent**

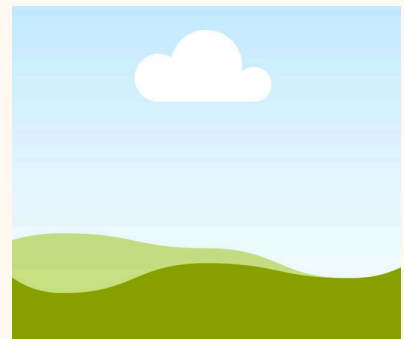
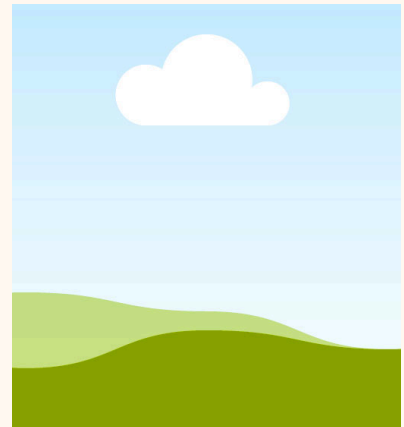




# 412 HIGHWAY 90

## Available Units

Unit 1-previously a salon, existing plumbing and treatment rooms. Large reception area and back break room.



**FOR LEASE**

**412 Highway 90  
Bay St. Louis, MS  
39520**

**Contact Us:**  
985-290-7700  
help@





# 412 HIGHWAY 90

## Unit 8

Located just off highly trafficked Highway 90 in Beautiful Bay St. Louis. Well appointed office with reception area, large back office and restroom in unit

504 Sq ft (14'/36')

Base Rent \$1,100



**FOR LEASE**

**412 Highway 90  
Bay St. Louis, MS  
39520**

**Contact Us:**  
985-290-7700  
help@899-rent





# 331 REESE ST

1920 Sq Ft Corner Unit

Signage visible from Highway 90

Large open floor plan

Loading doors

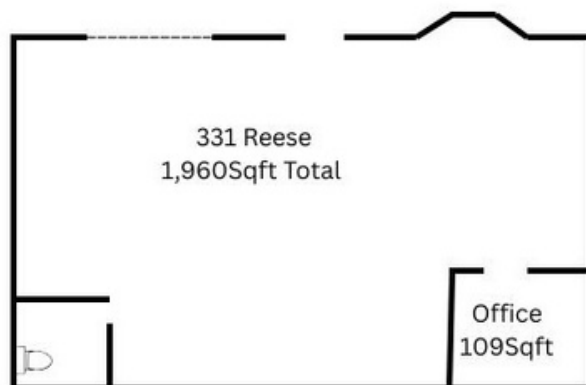
Highly trafficked retail/office center

\$2,800/mth triple net lease

1-3yr term



**FOR LEASE**



**331 Reese Street  
Bay St. Louis, MS  
39520**

**Contact Us:**  
985-290-7700  
[help@899-rent.com](mailto:help@899-rent.com)





# 1539 JACKSON SUITE 415

1032 Sq Ft Front Facing Unit

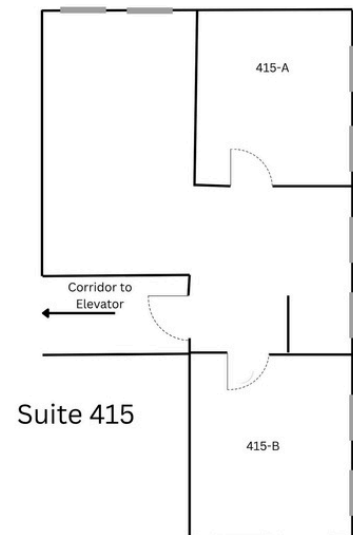
Located in Historic Uptown

Convenient to I-10

Off Street Parking Available

\$2,400/mth

Negotiable term



## FOR LEASE

1539 Jackson, Suite 415

New Orleans, LA

70130

985-290-7700

[help@899-rent.com](mailto:help@899-rent.com)