



**BERKSHIRE
HATHAWAY**
HomeServices

Bay Street
Realty Group

COMMERCIAL DIVISION

9625 E. Hwy 280
Ellabell, GA

35 Acres

30 Acres UpLand

Zoned AR

900 ft of frontage
on US-Hwy 280

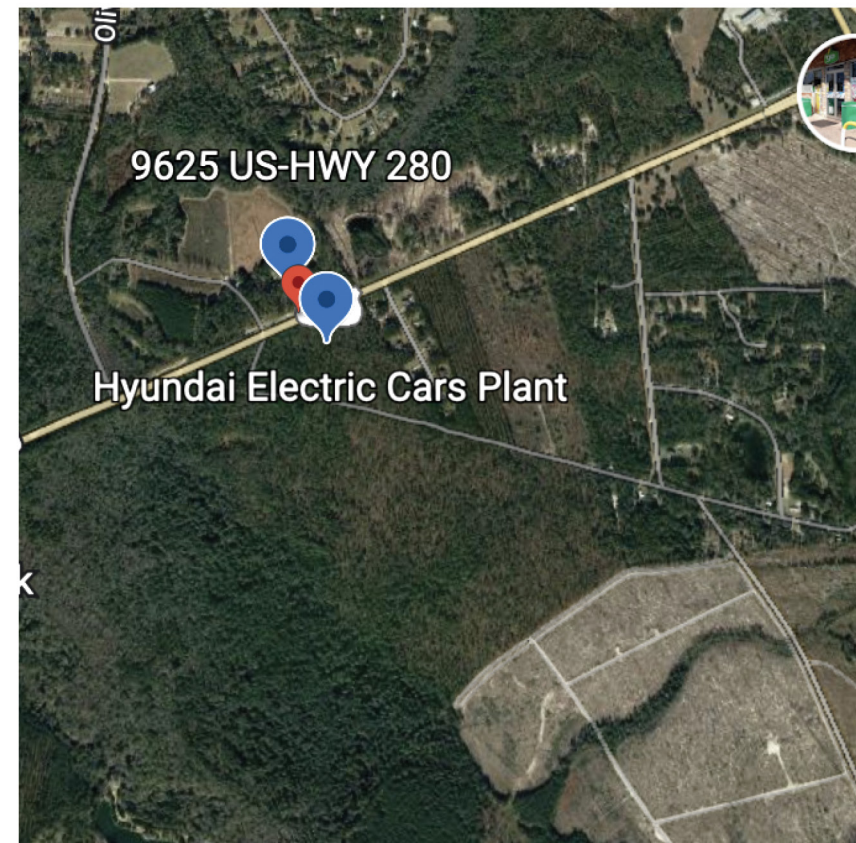
Offered at \$8,500,000.



Hyundai Plant Savannah, Ga.

Hyundai will invest \$US5.54 billion (\$US7.76 billion) in a new electric car and battery factory in the US state of Georgia, aiming to start production from 2025.

Construction of the new factory – which will only make electric vehicles and batteries – is to commence in early 2023, and by the first half of 2025 Hyundai hopes to be making 300,000 EVs a year there in 2021. Hyundai launched its first vehicle built purely on a ground-up all-electric platform. The Ioniq 5, the first of its pure electric Ioniq series, has proven a winner for its innovative design and forward-thinking features such as vehicle-to-load capability and ultra-fast 350kW charging.



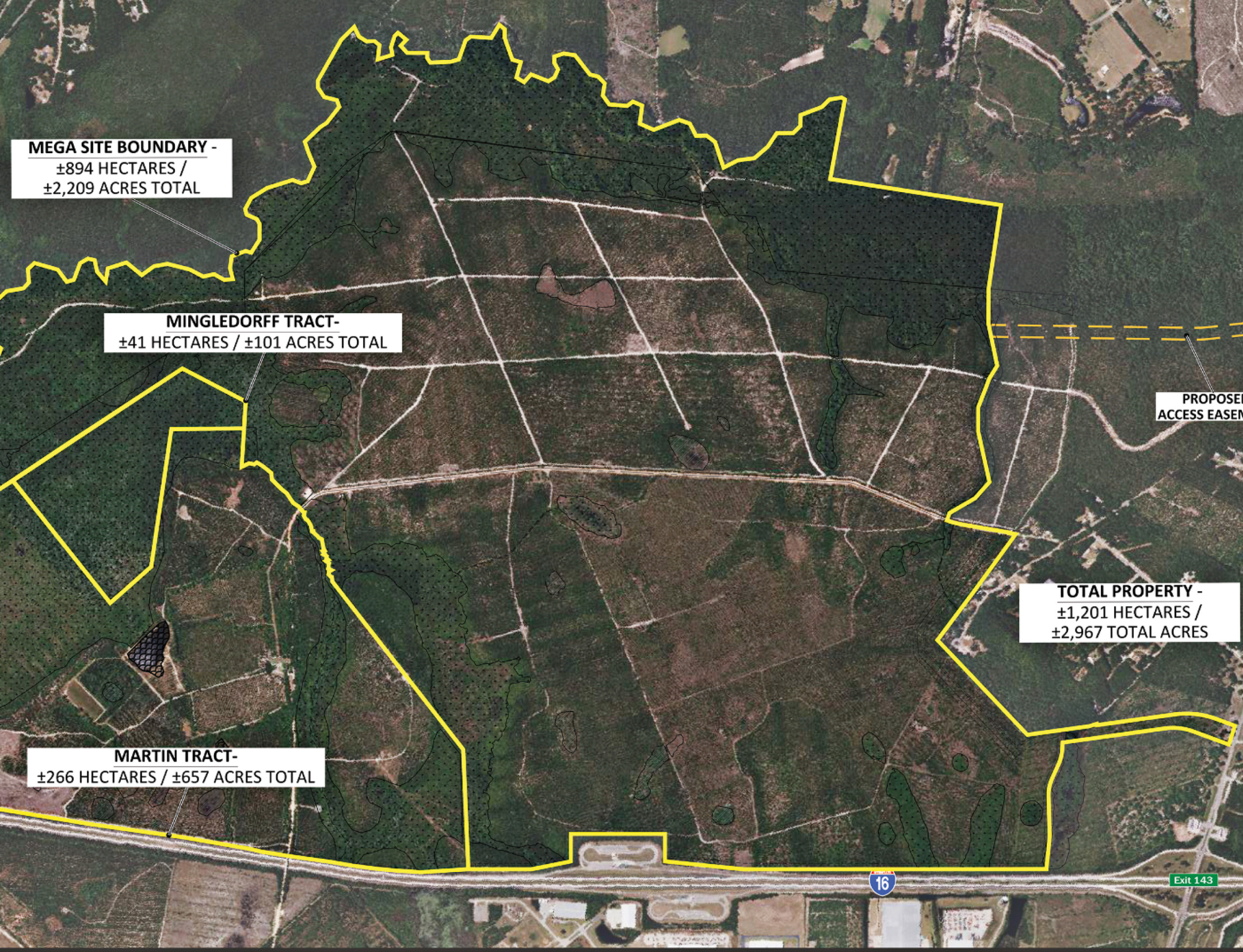
MEGA SITE BOUNDARY -
±894 HECTARES /
±2,209 ACRES TOTAL

MINGLEDORFF TRACT-
±41 HECTARES / ±101 ACRES TOTAL

PROPOSED
ACCESS EASEMENT

TOTAL PROPERTY -
±1,201 HECTARES /
±2,967 TOTAL ACRES

MARTIN TRACT-
±266 HECTARES / ±657 ACRES TOTAL





NEW **EV FACTORY**



The 2,293-acre Bryan County Mega Site is strategically located near port, rail and workforce. It is the first mega site in the State of Georgia's mega site program.



Hyundai Motor Group expects to begin construction in January 2023 with full production expected in early 2025. Hyundai Motor Group will seek local vendors and suppliers when it nears planned 2025 start of operations.



Hyundai Motor Group expects to employ approximately 8,100. Details regarding long-term jobs available in Georgia will be posted here when available.

The largest Economic Development in the history of the State of Georgia.

Southeast Georgia is one of the fastest growing regions in the United States. 9625 US Hwy 280 is the ideal location across from the future Hyundai Electric Car Facility, ideally located near importers, exporters, manufacturing, warehousing and distribution centers given the unique proximity of 27 miles to the Port of Savannah. Currently Zoned AR, conveniently located less than a mile from I-16.



Kim Lyle
Commercial Real Estate Specialist
912-484-1330
klyle@baystreetrealttygroup.com
www.berkshirehathawayhs.com/

**BERKSHIRE
HATHAWAY** | Bay Street
HomeServices Realty Group

COMMERCIAL DIVISION

5 East Perry Street Savannah, GA 31401

©2022 BHH Affiliates, LLC. Real Estate Brokerage Services are offered through the network member franchisees of BHH Affiliates, LLC. Most franchisees are independently owned and operated. Berkshire Hathaway HomeServices and the Berkshire Hathaway HomeServices symbol are registered service marks of Columbia Insurance Company, a Berkshire Hathaway affiliate. Information not verified or guaranteed. If your property is currently listed with a Broker, this is not intended as a solicitation. Equal Housing Opportunity. 