

DOWNTOWN TAMPA

CANDY BLVD

W PEARL AVE

S MANHATTAN AVE



FOR LEASE

5200 S Manhattan Ave | Tampa, FL  
2.88 Acres | 23,787 Square Foot Warehouse

## PROPERTY INFORMATION:

- 2.88 Acres (Fully Paved & Fenced/ Secured)
- 14,548-sf Warehouse & Loading Space
  - 7,915-sf Freezer/Cooler Warehouse
  - 19' Clear Height
- 1,956-sf Maintenance Facility
- Twenty (20) Dock High Positions
- Fifteen (15) Charging Stations
- Fueling Station
- Power: 1,200 amps, 480 volts, 3-Phase
- 6.7 Miles From Downtown Tampa



MARKETED BY:



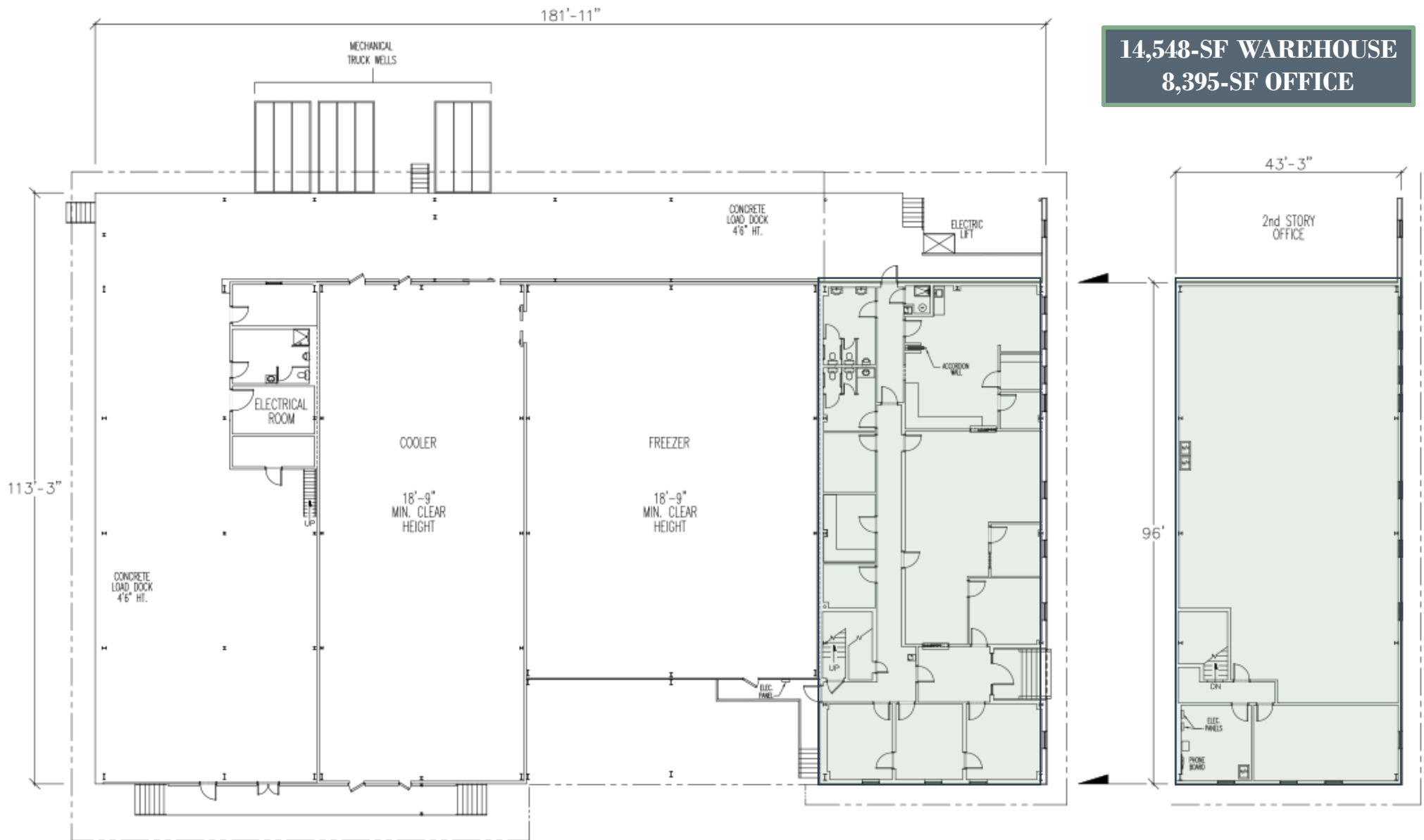
Pat Kelly  
813.682.6210  
Pat.Kelly@franklinst.com

Brad Hutton  
813.793.8492  
Brad.Hutton@franklinst.com



# FOR LEASE

5200 S Manhattan Ave | Tampa, FL  
2.88 Acres | 23,787 Square Foot Warehouse



**14,548-SF WAREHOUSE**  
**8,395-SF OFFICE**



**FOR LEASE**

**5200 S Manhattan Ave | Tampa, FL**  
**2.88 Acres | 23,787 Square Foot Warehouse**



DOWNTOWN TAMPA

CANDY BLVD

STABILIZED OUTDOOR STORAGE

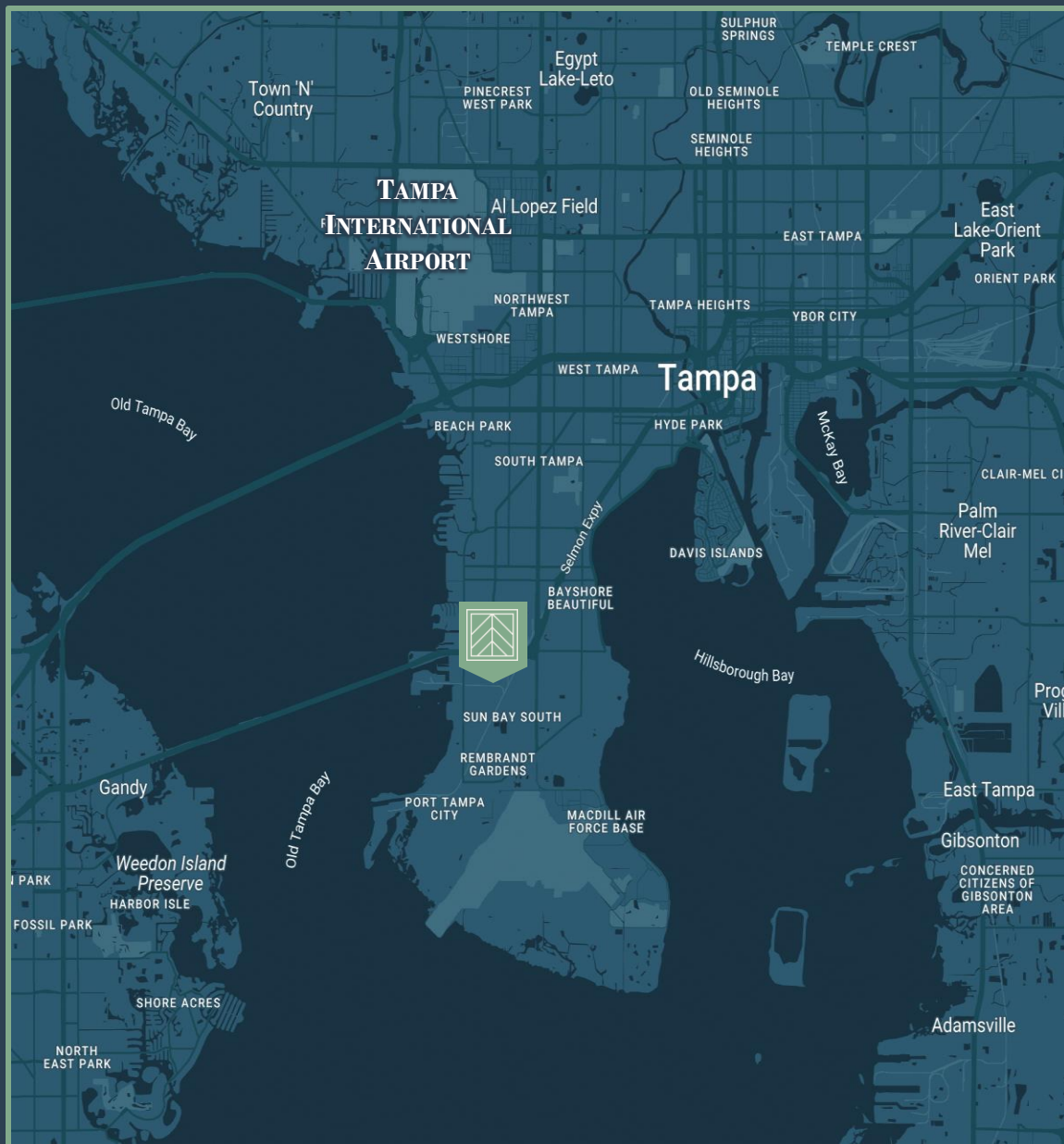
W PEARL AVE

S MANHATTAN AVE



FOR LEASE

5200 S Manhattan Ave | Tampa, FL  
2.88 Acres | 23,787 Square Foot Warehouse



## AVAILABLE IMMEDIATELY!

- 2.88 Acres (Fully Paved)
- 23,787 Square Foot Building
- Twenty (20) Dock Positions

## MARKETED BY:



**Pat Kelly**

813.682.6210

Pat.Kelly@franklinst.com

**Brad Hutton**

813.793.8492

Brad.Hutton@franklinst.com



# FOR LEASE

**5200 S Manhattan Ave | Tampa, FL**  
**2.88 Acres | 23,787 Square Foot Warehouse**



GANDY BLVD

S MANHATTAN AVE

W PEARL AVE



FOR LEASE

5200 S Manhattan Ave | Tampa, FL  
2.88 Acres | 23,787 Square Foot Warehouse