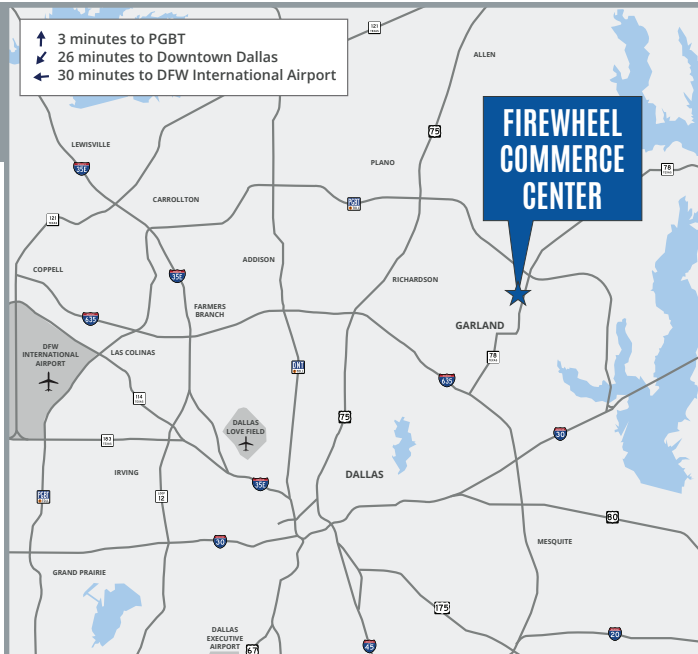




FIREWHEEL COMMERCE CENTER

2350 Crist Road, Suite 700A-900A | Garland, Texas 75040



23,806 SF FOR LEASE

PROPERTY HIGHLIGHTS

- Total Building SF: 128,000
- Vacancy SF: 23,806
- Clear Height: 24'
- ESFR Sprinklers
- Year of Construction: 2008

CONTACT

Josh Barnes, SIOR

972.280.8353

jbarnes@holtlunsford.com

Weston Porter

214.442.8933

wporter@holtlunsford.com



FIREWHEEL COMMERCE CENTER

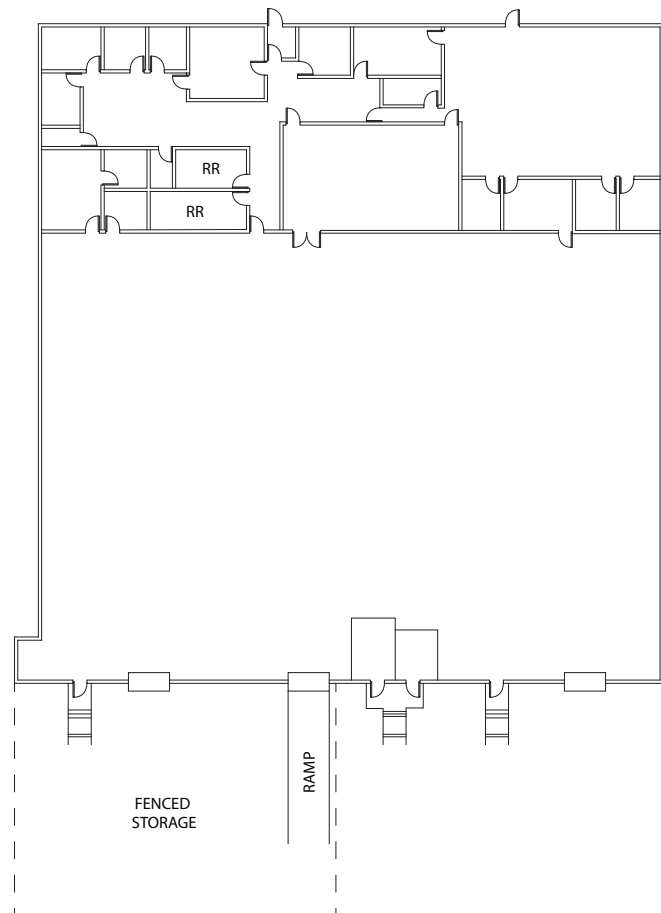


FLOOR PLAN

23,806 SF FOR LEASE

SUITE SPECS

- 23,806 SF Total
- Office SF: 7,160 SF
- Clear Height: 24'
- Two (2) Dock High | One (1) Ramp
- Fenced Truck Court



Josh Barnes, SIOR

972.280.8353

jbarnes@holtlunsford.com

CONTACT

Weston Porter

214.442.8933

wporter@holtlunsford.com

