



FOR LEASE | 139 Keefer Street, Vancouver, BC

RETAIL UNITS

Opportunity to lease 1,250 - 2,500 SF of retail space with excellent street exposure fronting onto Keefer Street with great signage potential.

Taylor Durham

Commercial Leasing and Sales
604 691 6656 | tdurham@naicommercial.ca

Chris Oteman

Commercial Leasing and Sales
604 691 6633 | coteman@naicommercial.ca



Salient Details

Available Units & Sizes (approx.)

Unit 130	Retail	1,100 SF	Available
Unit 135	Retail	1,250 SF	Available
*130 & 135 can be combined for a total of 2,350 SF			
Unit 150	Retail	1,250 SF	Available
Unit 139 A/B	Restaurant	2,500 SF	LEASED
Unit 155	Retail	1,250 SF	LEASED
Unit 200	Office	3,000 SF	LEASED

Net Rate

Contact listing agents

Additional Rent

\$17.00/SF (2024 estimate)

Availability

Immediate

Zoning

HA-1A

Parking

Secured gated parking available at the rear of the building

139 Keefer Street Vancouver, BC

NAICommercial

Overview

Located in the rapidly growing and redeveloping neighbourhood in South West Chinatown along Keefer Street between Main and Columbia Street. The property is in close proximity to popular shops and restaurants include: The Keefer Bar, Juke Chicken, Bao Bei, Virtuous Pie, Phnom Penh, Dalina Café. It's also walking distance to the Stadium-Chinatown SkyTrain Station and Main Street SkyTrain Station and the new upcoming St. Paul's Hospital in the False Creek Flats.

Features



Excellent street exposure fronting onto Keefer Street with great signage potential.



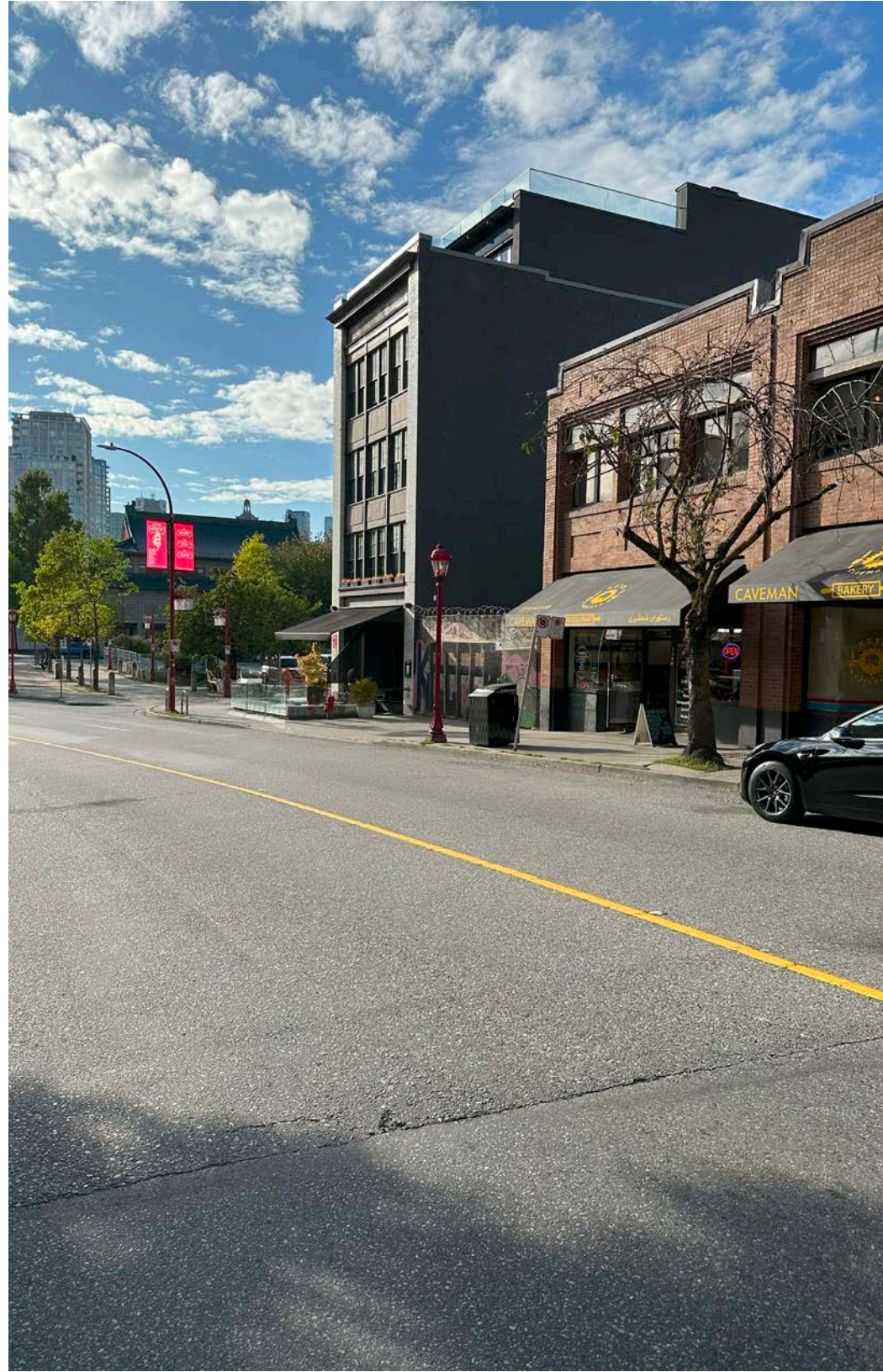
Centrally located, within steps of mixed use developments, restaurants, cafes, shops, and Andy Livingstone Park.

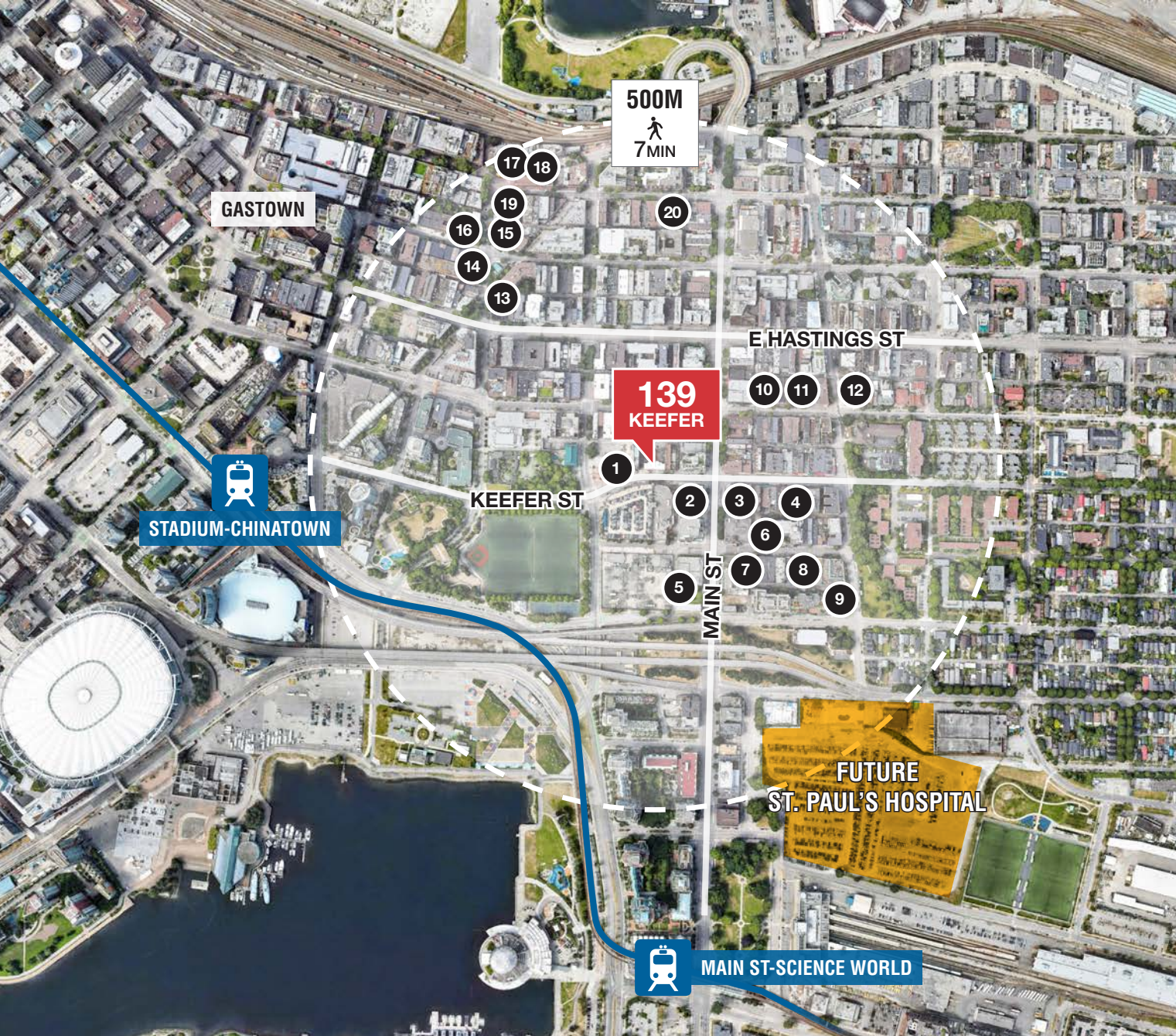


Multiple unit sizes and on-site parking available for staff or customers.



High visibility to vehicle and pedestrian traffic and access to additional parking in the immediate area.





1. The Keefer Bar
2. Juke Fried Chicken
3. Tim Hortons
4. Scotiabank
5. Dalina Café
6. Fat Mao Noodles
7. Fiorino Italian
8. Phnom Penh Vietnamese
9. Hunnybee Brunchette
10. Mello Donuts
11. Nancy Go Yaya Eating House
12. Kevin & Kevin Juice & Cocktail
13. PiDiGiN
14. Di Beppe
15. Blarney Stone
16. Tacofino Taco Bar
17. LOCAL Public Eatery
18. Soft Peaks Ice Cream
19. The Diamond
20. Cadeaux Bakery

97
WALKER'S PARADISE
Daily errands do not require a car

100
RIDER'S PARADISE
World-class public transportation

99
BIKER'S PARADISE
Daily errands can be accomplished on a bike

Taylor Durham
Commercial Leasing and Sales
604 691 6656
tdurham@naicommercial.ca

Chris Oteman
Commercial Leasing and Sales
604 691 6633
coteman@naicommercial.ca

NAI Commercial

NAI Commercial
1075 W Georgia St, Suite 1300, Vancouver, BC V6E 3C9
+1 604 683 7535 | naicommercial.ca

No warranty or representation, express or implied, is made as to the accuracy of the information contained herein, and the same is submitted subject to errors, omissions, change of price, rental or other conditions, prior sale, lease or financing, or withdrawal without notice, and of any special listing conditions imposed by our principals no warranties or representations are made as to the condition of the property or any hazards contained therein are any to be implied. Aerial image(s) courtesy of Google, Landsat/Copernicus