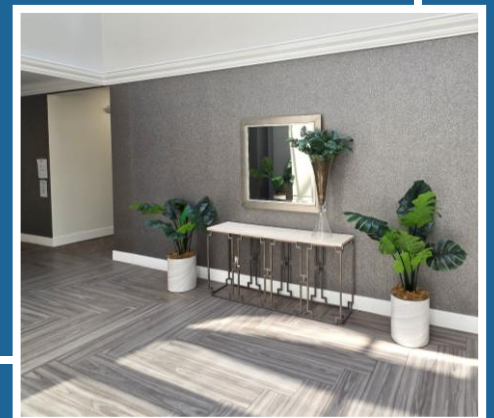


Deerfield Office Center

Brand New Spec Suites &
Upgraded Common Areas



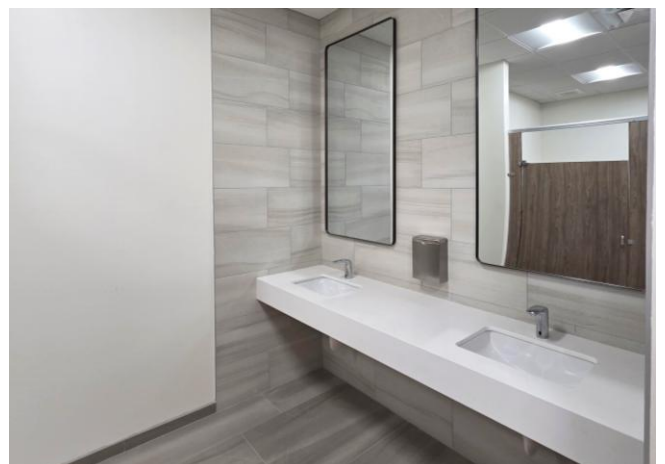
For Lease
±2,965-28,547 SF
Modern, Move-In
Ready Office Space

1400 East Newport Center Drive
Deerfield Beach, FL 33442

Ready When You Are
Flexible Layout Options

Property Features

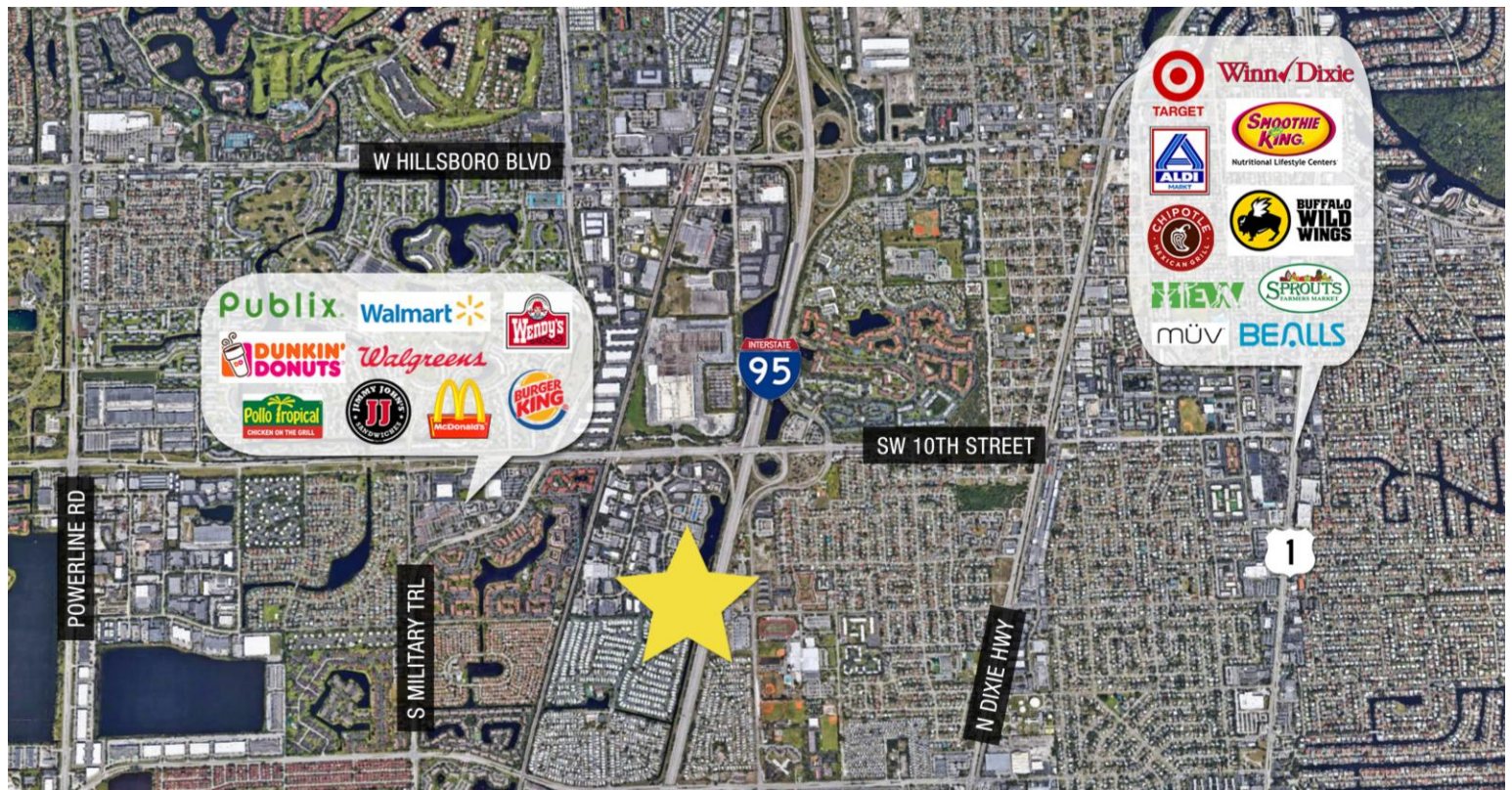
- Updated office building with modern common areas & new security cameras
- Brand new, move-in ready suites & new tenant conference facility coming soon
- Frontage along I-95 with building signage available
- Located within the well-maintained Newport Center Business Park with beautiful landscaping, a 6-acre lake, walking trails, & two hotels
- Excellent access to all South Florida highways, with a great location just west of I-95 at SW 10th Street
- Ample parking with reserved available



For more information:

Lesley Sheinberg, Managing Director
lsheinberg@mhcreal.com | 561 254 7810





THRIVE IN THE HEART OF DEERFIELD BEACH

Brand-new spec suites and a state-of-the-art tenant conference facility create a workspace designed for productivity and success.

With convenient access to major roads, dining, and shopping, plus ample on-site parking, this lush corporate setting is the ideal place for businesses to thrive.

Available Space: ±2,965 – 28,547 SF

Suite 101: ±5,863 SF
 Suite 102: ±5,133 SF
 Suite 105: ±4,202 SF
 Suite 106: ±9,772 SF
 Suite 107: ±3,577 SF
 Suite 200: ±12,853 SF
 Suite 205: ±2,965 SF

Rental Rate

\$18.00/SF NNN
 \$9.50/SF CAM; In-suite janitorial can be provided; tenant pays electric

Parking

Ample parking with reserved available (6/1,000)



For More Information:
 Lesley Sheinberg | lsheinberg@mhcreal.com

mhcreal.com | 561 471 8000

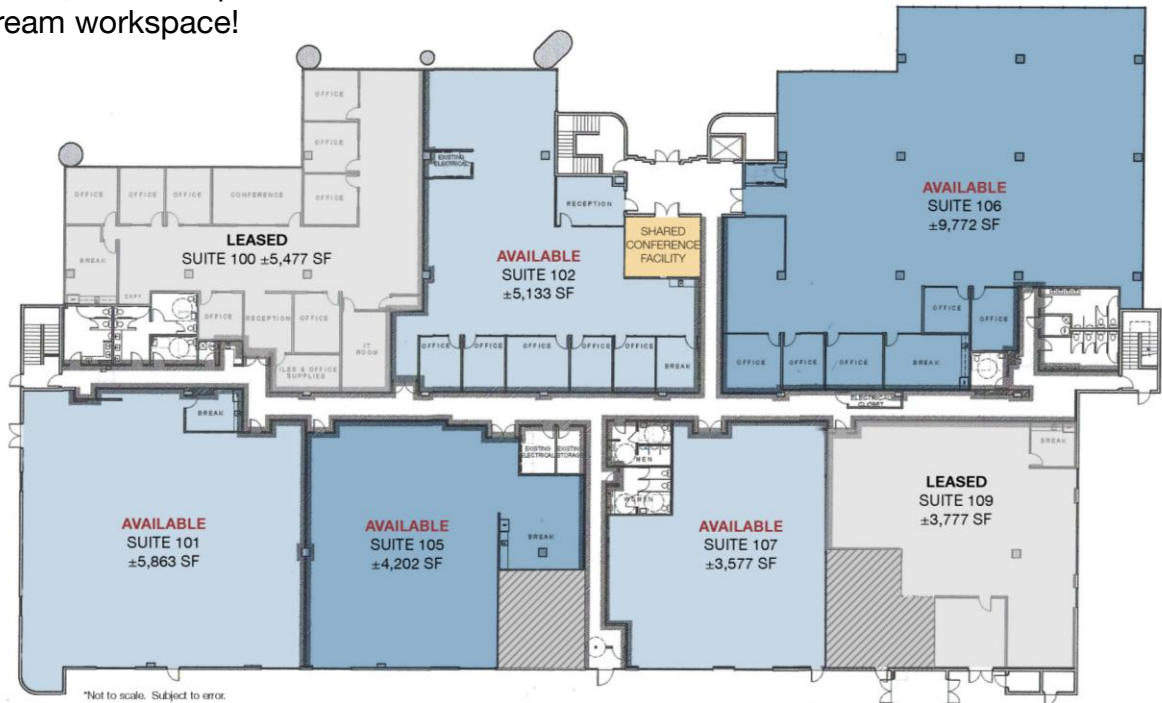
CHECK OUT THESE FEATURED SUITES

Customize or Move-In Today!

First Floor | $\pm 3,577 - 28,547$ SF

Custom Configurations Available

Customize and/or combine space to create your dream workspace!



Suite 205 | $\pm 2,965$ SF

New Spec Suite

Modern & Move-In Ready!



For More Information:

Lesley Sheinberg | lsheinberg@mhcreal.com

mhcreal.com | 561 471 8000

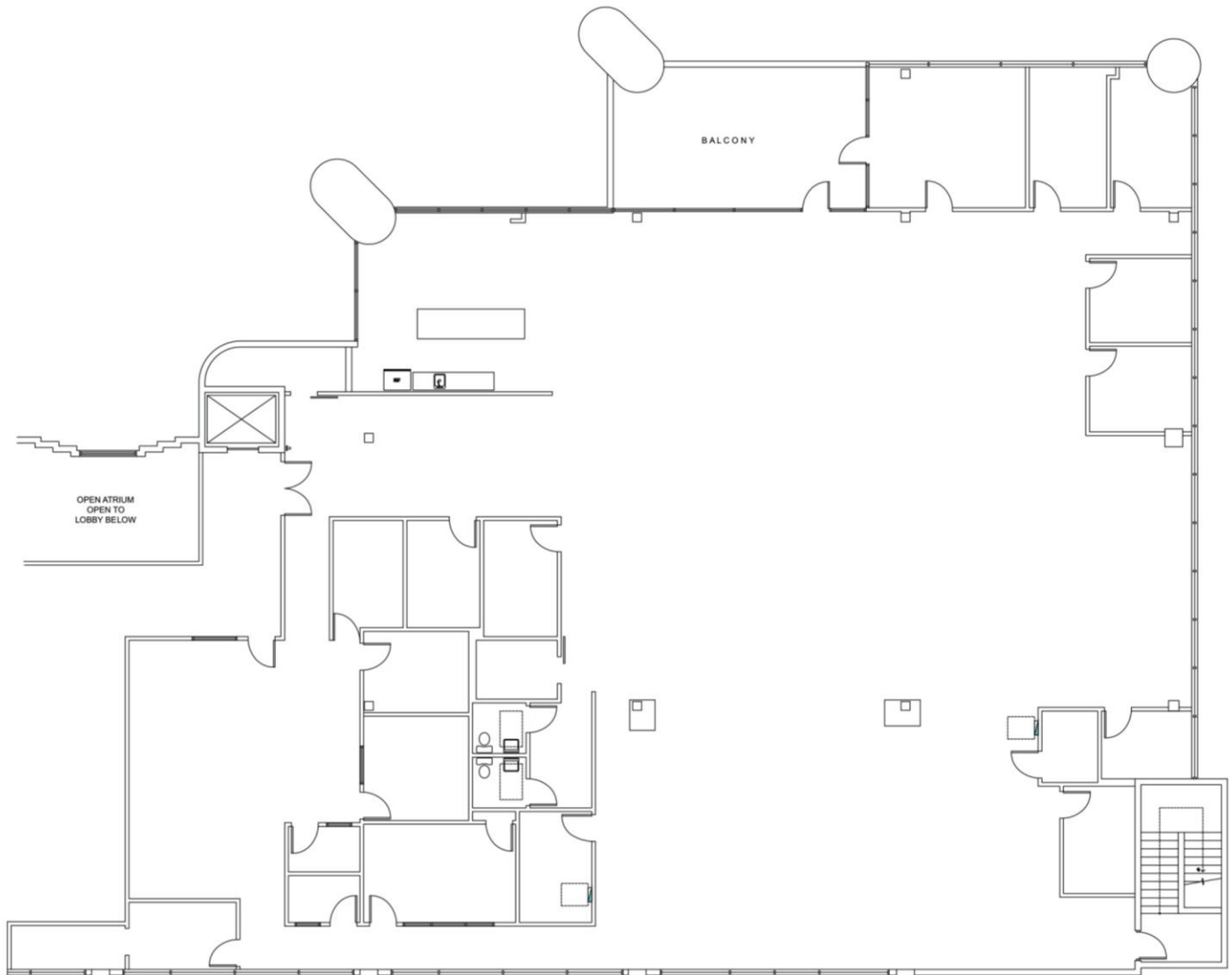
CHECK OUT THESE FEATURED SUITES

Customize or Move-In Today!

Suite 200 | ±12,853 SF

Customize or Move-In

Spacious and ready for your unique touches!



*Not to scale. Subject to error.

**CALL TO SCHEDULE
YOUR TOUR TODAY!**

Lesley Sheinberg, Managing Director

lsheinberg@mhcreal.com | C: 561 254 7810 | O: 561 471 8000