

Home report

828 Cherry Street, Navarino, Green Bay, Brown County,
Wisconsin, United States, 54301

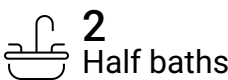


Total Area: 5889 sq. ft

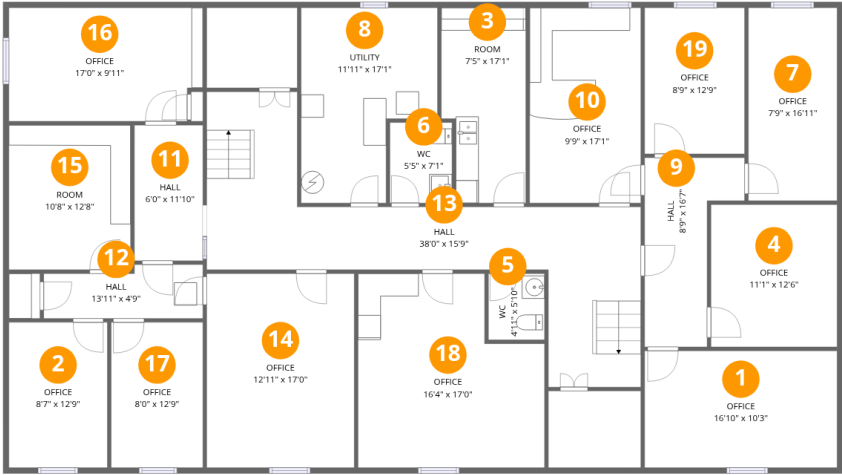
Floor 1: 2856 sq. ft, Floor 2: 3033 sq. ft

Excluded: Utility 177 sq. ft

Property summary



828 Cherry Street, Navarino, Green Bay, Brown County,
Wisconsin, United States, 54301



Room dimensions

Floor 1 Total:2856sqft Excluded: 177sqft

#		Max Dimensions	sqft	Included
1	Office	16'10" x 10'3"	172 sq. ft	Yes
2	Office	8'7" x 12'9"	110 sq. ft	Yes
3	Room	7'5" x 17'1"	117 sq. ft	Yes
4	Office	11'1" x 12'6"	138 sq. ft	Yes
5	WC	4'11" x 5'10"	29 sq. ft	Yes
6	WC	5'5" x 7'1"	38 sq. ft	Yes
7	Office	7'9" x 16'11"	131 sq. ft	Yes
8	Utility	11'11" x 17'1"	171 sq. ft	No
9	Hall	8'9" x 16'7"	103 sq. ft	Yes
10	Office	9'9" x 17'1"	166 sq. ft	Yes
11	Hall	6'0" x 11'10"	71 sq. ft	Yes

Home report

**828 Cherry Street, Navarino, Green Bay, Brown County,
Wisconsin, United States, 54301**

#		Max Dimensions	sqft	Included
12	Hall	13'11" x 4'9"	60 sq. ft	Yes
13	Hall	38'0" x 15'9"	372 sq. ft	Yes
14	Office	12'11" x 17'0"	219 sq. ft	Yes
15	Room	10'8" x 12'8"	135 sq. ft	Yes
16	Office	17'0" x 9'11"	165 sq. ft	Yes
17	Office	8'0" x 12'9"	102 sq. ft	Yes
18	Office	16'4" x 17'0"	245 sq. ft	Yes
19	Office	8'9" x 12'9"	112 sq. ft	Yes

Home report

828 Cherry Street, Navarino, Green Bay, Brown County,
Wisconsin, United States, 54301



Room dimensions

Floor 2 Total:3033sqft Excluded: 0sqft

#		Max Dimensions	sqft	Included
20	Office	8'6" x 12'3"	105 sq. ft	Yes
21	Office	16'10" x 15'4"	259 sq. ft	Yes
22	Foyer	8'1" x 22'10"	185 sq. ft	Yes
23	Office	8'4" x 17'0"	142 sq. ft	Yes
24	Office	17'0" x 10'3"	174 sq. ft	Yes
25	Office	8'9" x 9'3"	81 sq. ft	Yes
26	Office	12'8" x 17'1"	217 sq. ft	Yes
27	Hall	20'11" x 7'5"	155 sq. ft	Yes
28	Office	8'0" x 12'3"	98 sq. ft	Yes
29	Office	16'9" x 8'3"	136 sq. ft	Yes
30	Office	8'6" x 12'0"	102 sq. ft	Yes

Home report

**828 Cherry Street, Navarino, Green Bay, Brown County,
Wisconsin, United States, 54301**

#		Max Dimensions	sqft	Included
31	Hall	29'11" x 9'5"	196 sq. ft	Yes
32	Office	17'0" x 11'9"	200 sq. ft	Yes
33	Office	17'0" x 17'7"	268 sq. ft	Yes
34	Entry	7'11" x 8'3"	107 sq. ft	Yes
35	Office	11'10" x 9'3"	109 sq. ft	Yes
36	Office	16'9" x 8'6"	142 sq. ft	Yes
37	Office	8'0" x 12'0"	96 sq. ft	Yes

828 Cherry Street, Navarino, Green Bay, Brown County,
Wisconsin, United States, 54301

1 Floor 1 - Office



Max Dimensions: 16'10" x 10'3"
Calculated Area: 172 sq. ft
Included: Yes

Heated: Yes
Finished: Yes
Enclosed: Yes
Contiguous: Yes
Permitted: Yes
Wet space: No
Addition: No
Conversion: No

2 Floor 1 - Office



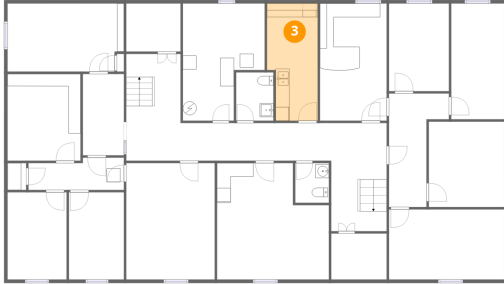
Max Dimensions: 8'7" x 12'9"
Calculated Area: 110 sq. ft
Included: Yes

Heated: Yes
Finished: Yes
Enclosed: Yes
Contiguous: Yes
Permitted: Yes
Wet space: No
Addition: No
Conversion: No

Home report

828 Cherry Street, Navarino, Green Bay, Brown County,
Wisconsin, United States, 54301

3 Floor 1 - Room



Max Dimensions: 7'5" x 17'1"
Calculated Area: 117 sq. ft
Included: Yes

Heated: Yes
Finished: Yes
Enclosed: Yes
Contiguous: Yes
Permitted: Yes
Wet space: No
Addition: No
Conversion: No

4 Floor 1 - Office



Max Dimensions: 11'1" x 12'6"
Calculated Area: 138 sq. ft
Included: Yes

Heated: Yes
Finished: Yes
Enclosed: Yes
Contiguous: Yes
Permitted: Yes
Wet space: No
Addition: No
Conversion: No

5 Floor 1 - WC

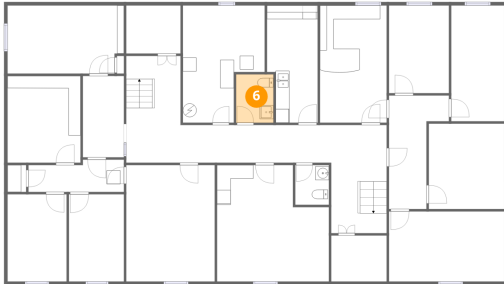


Max Dimensions: 4'11" x 5'10"
Calculated Area: 29 sq. ft
Included: Yes

Heated: Yes
Finished: Yes
Enclosed: Yes
Contiguous: Yes
Permitted: Yes
Wet space: Yes
Addition: No
Conversion: No

828 Cherry Street, Navarino, Green Bay, Brown County,
Wisconsin, United States, 54301

6 Floor 1 - WC



Max Dimensions: 5'5" x 7'1"
Calculated Area: 38 sq. ft
Included: Yes

Heated: Yes
Finished: Yes
Enclosed: Yes
Contiguous: Yes
Permitted: Yes
Wet space: Yes
Addition: No
Conversion: No

7 Floor 1 - Office



Max Dimensions: 7'9" x
16'11"
Calculated Area: 131 sq. ft
Included: Yes

Heated: Yes
Finished: Yes
Enclosed: Yes
Contiguous:
Yes
Permitted: Yes
Wet space: No
Addition: No
Conversion: No

8 Floor 1 - Utility



Max Dimensions: 11'11" x
17'1"
Calculated Area: 171 sq. ft
Included: No

Heated: Yes
Finished: No
Enclosed: Yes
Contiguous:
Yes
Permitted: Yes
Wet space: No
Addition: No
Conversion: No

828 Cherry Street, Navarino, Green Bay, Brown County,
Wisconsin, United States, 54301

9 Floor 1 - Hall



Max Dimensions: 8'9" x
16'7"
Calculated Area: 103 sq. ft
Included: Yes

Heated: Yes
Finished: Yes
Enclosed: Yes
Contiguous:
Yes
Permitted: Yes
Wet space: No
Addition: No
Conversion: No

10 Floor 1 - Office



Max Dimensions: 9'9" x
17'1"
Calculated Area: 166 sq. ft
Included: Yes

Heated: Yes
Finished: Yes
Enclosed: Yes
Contiguous:
Yes
Permitted: Yes
Wet space: No
Addition: No
Conversion: No

11 Floor 1 - Hall



Max Dimensions: 6'0" x
11'10"
Calculated Area: 71 sq. ft
Included: Yes

Heated: Yes
Finished: Yes
Enclosed: Yes
Contiguous:
Yes
Permitted: Yes
Wet space: No
Addition: No
Conversion: No

828 Cherry Street, Navarino, Green Bay, Brown County,
Wisconsin, United States, 54301

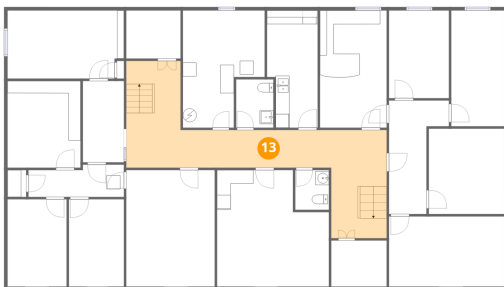
12 Floor 1 - Hall



Max Dimensions: 13'11" x 4'9"
Calculated Area: 60 sq. ft
Included: Yes

Heated: Yes
Finished: Yes
Enclosed: Yes
Contiguous: Yes
Permitted: Yes
Wet space: No
Addition: No
Conversion: No

13 Floor 1 - Hall



Max Dimensions: 38'0" x 15'9"
Calculated Area: 372 sq. ft
Included: Yes

Heated: Yes
Finished: Yes
Enclosed: Yes
Contiguous: Yes
Permitted: Yes
Wet space: No
Addition: No
Conversion: No

14 Floor 1 - Office



Max Dimensions: 12'11" x 17'0"
Calculated Area: 219 sq. ft
Included: Yes

Heated: Yes
Finished: Yes
Enclosed: Yes
Contiguous: Yes
Permitted: Yes
Wet space: No
Addition: No
Conversion: No

828 Cherry Street, Navarino, Green Bay, Brown County,
Wisconsin, United States, 54301

15 Floor 1 - Room



Max Dimensions: 10'8" x 12'8"
Calculated Area: 135 sq. ft
Included: Yes

Heated: Yes
Finished: Yes
Enclosed: Yes
Contiguous: Yes
Permitted: Yes
Wet space: No
Addition: No
Conversion: No

16 Floor 1 - Office



Max Dimensions: 17'0" x 9'11"
Calculated Area: 165 sq. ft
Included: Yes

Heated: Yes
Finished: Yes
Enclosed: Yes
Contiguous: Yes
Permitted: Yes
Wet space: No
Addition: No
Conversion: No

17 Floor 1 - Office

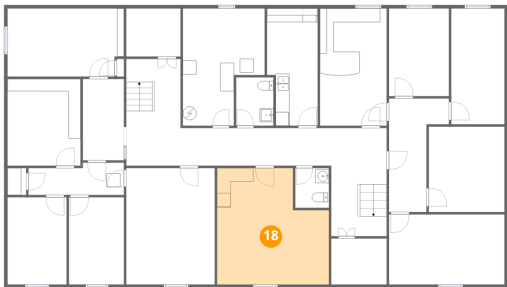


Max Dimensions: 8'0" x 12'9"
Calculated Area: 102 sq. ft
Included: Yes

Heated: Yes
Finished: Yes
Enclosed: Yes
Contiguous: Yes
Permitted: Yes
Wet space: No
Addition: No
Conversion: No

828 Cherry Street, Navarino, Green Bay, Brown County,
Wisconsin, United States, 54301

18 Floor 1 - Office



Max Dimensions: 16'4" x 17'0"
Calculated Area: 245 sq. ft
Included: Yes

Heated: Yes
Finished: Yes
Enclosed: Yes
Contiguous: Yes
Permitted: Yes
Wet space: No
Addition: No
Conversion: No

19 Floor 1 - Office



Max Dimensions: 8'9" x 12'9"
Calculated Area: 112 sq. ft
Included: Yes

Heated: Yes
Finished: Yes
Enclosed: Yes
Contiguous: Yes
Permitted: Yes
Wet space: No
Addition: No
Conversion: No

20 Floor 2 - Office



Max Dimensions: 8'6" x 12'3"
Calculated Area: 105 sq. ft
Included: Yes

Heated: Yes
Finished: Yes
Enclosed: Yes
Contiguous: Yes
Permitted: Yes
Wet space: No
Addition: No
Conversion: No

828 Cherry Street, Navarino, Green Bay, Brown County,
Wisconsin, United States, 54301

21 Floor 2 - Office



Max Dimensions: 16'10" x 15'4"
Calculated Area: 259 sq. ft
Included: Yes

Heated: Yes
Finished: Yes
Enclosed: Yes
Contiguous: Yes
Permitted: Yes
Wet space: No
Addition: No
Conversion: No

22 Floor 2 - Foyer



Max Dimensions: 8'1" x 22'10"
Calculated Area: 185 sq. ft
Included: Yes

Heated: Yes
Finished: Yes
Enclosed: Yes
Contiguous: Yes
Permitted: Yes
Wet space: No
Addition: No
Conversion: No

23 Floor 2 - Office



Max Dimensions: 8'4" x 17'0"
Calculated Area: 142 sq. ft
Included: Yes

Heated: Yes
Finished: Yes
Enclosed: Yes
Contiguous: Yes
Permitted: Yes
Wet space: No
Addition: No
Conversion: No

828 Cherry Street, Navarino, Green Bay, Brown County,
Wisconsin, United States, 54301

24 Floor 2 - Office



Max Dimensions: 17'0" x 10'3"
Calculated Area: 174 sq. ft
Included: Yes

Heated: Yes
Finished: Yes
Enclosed: Yes
Contiguous: Yes
Permitted: Yes
Wet space: No
Addition: No
Conversion: No

25 Floor 2 - Office



Max Dimensions: 8'9" x 9'3"
Calculated Area: 81 sq. ft
Included: Yes

Heated: Yes
Finished: Yes
Enclosed: Yes
Contiguous: Yes
Permitted: Yes
Wet space: No
Addition: No
Conversion: No

26 Floor 2 - Office



Max Dimensions: 12'8" x 17'1"
Calculated Area: 217 sq. ft
Included: Yes

Heated: Yes
Finished: Yes
Enclosed: Yes
Contiguous: Yes
Permitted: Yes
Wet space: No
Addition: No
Conversion: No

27 Floor 2 - Hall



Max Dimensions: 20'11" x 7'5"
Calculated Area: 155 sq. ft
Included: Yes

Heated: Yes
Finished: Yes
Enclosed: Yes
Contiguous: Yes
Permitted: Yes
Wet space: No
Addition: No
Conversion: No

28 Floor 2 - Office



Max Dimensions: 8'0" x 12'3"
Calculated Area: 98 sq. ft
Included: Yes

Heated: Yes
Finished: Yes
Enclosed: Yes
Contiguous: Yes
Permitted: Yes
Wet space: No
Addition: No
Conversion: No

29 Floor 2 - Office



Max Dimensions: 16'9" x 8'3"
Calculated Area: 136 sq. ft
Included: Yes

Heated: Yes
Finished: Yes
Enclosed: Yes
Contiguous: Yes
Permitted: Yes
Wet space: No
Addition: No
Conversion: No

828 Cherry Street, Navarino, Green Bay, Brown County,
Wisconsin, United States, 54301

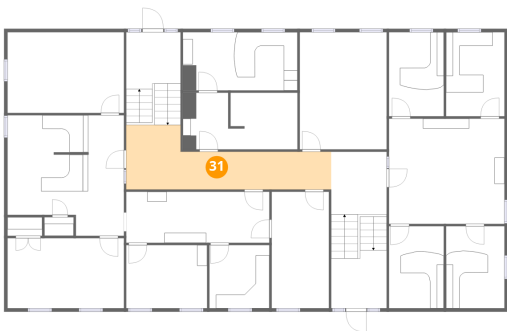
30 Floor 2 - Office



Max Dimensions: 8'6" x 12'0"
Calculated Area: 102 sq. ft
Included: Yes

Heated: Yes
Finished: Yes
Enclosed: Yes
Contiguous: Yes
Permitted: Yes
Wet space: No
Addition: No
Conversion: No

31 Floor 2 - Hall



Max Dimensions: 29'11" x 9'5"
Calculated Area: 196 sq. ft
Included: Yes

Heated: Yes
Finished: Yes
Enclosed: Yes
Contiguous: Yes
Permitted: Yes
Wet space: No
Addition: No
Conversion: No

32 Floor 2 - Office



Max Dimensions: 17'0" x 11'9"
Calculated Area: 200 sq. ft
Included: Yes

Heated: Yes
Finished: Yes
Enclosed: Yes
Contiguous: Yes
Permitted: Yes
Wet space: No
Addition: No
Conversion: No

828 Cherry Street, Navarino, Green Bay, Brown County,
Wisconsin, United States, 54301

33 Floor 2 - Office



Max Dimensions: 17'0" x 17'7"
Calculated Area: 268 sq. ft
Included: Yes

Heated: Yes
Finished: Yes
Enclosed: Yes
Contiguous: Yes
Permitted: Yes
Wet space: No
Addition: No
Conversion: No

34 Floor 2 - Entry



Max Dimensions: 7'11" x 8'3"
Calculated Area: 107 sq. ft
Included: Yes

Heated: Yes
Finished: Yes
Enclosed: Yes
Contiguous: Yes
Permitted: Yes
Wet space: No
Addition: No
Conversion: No

35 Floor 2 - Office



Max Dimensions: 11'10" x 9'3"
Calculated Area: 109 sq. ft
Included: Yes

Heated: Yes
Finished: Yes
Enclosed: Yes
Contiguous: Yes
Permitted: Yes
Wet space: No
Addition: No
Conversion: No

828 Cherry Street, Navarino, Green Bay, Brown County,
Wisconsin, United States, 54301

36 Floor 2 - Office



Max Dimensions: 16'9" x 8'6"
Calculated Area: 142 sq. ft
Included: Yes

Heated: Yes
Finished: Yes
Enclosed: Yes
Contiguous: Yes
Permitted: Yes
Wet space: No
Addition: No
Conversion: No

37 Floor 2 - Office



Max Dimensions: 8'0" x 12'0"
Calculated Area: 96 sq. ft
Included: Yes

Heated: Yes
Finished: Yes
Enclosed: Yes
Contiguous: Yes
Permitted: Yes
Wet space: No
Addition: No
Conversion: No