

PREMIER COMMERCIAL

REAL ESTATE SERVICES

Douglas C. Wise - Broker, WV
Joseph W. Deeds - Broker, PA

COMMERCIAL LOT GROUND LEASE

1.0 AC ±

Commercial Development

**369 HOLLAND AVENUE
WESTOVER, WV**

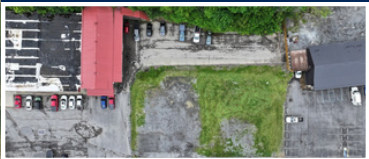
WWW.PREMIERCOMMERCIALRES.COM

HIGHLIGHTS:

- Excellent visibility along Holland Avenue with strong daily traffic counts
- Convenient access to major highways and surrounding commercial districts
- Excellent potential Commercial or Multifamily Development
- Located near established residential neighborhoods and growing business hubs
- High-exposure location positioned in a rapidly developing commercial corridor
- Ample frontage providing outstanding signage and branding opportunities
- Minutes from Morgantown and major regional destinations
- Strong surrounding demographics and daytime population
- Excellent accessibility for both local and regional traffic



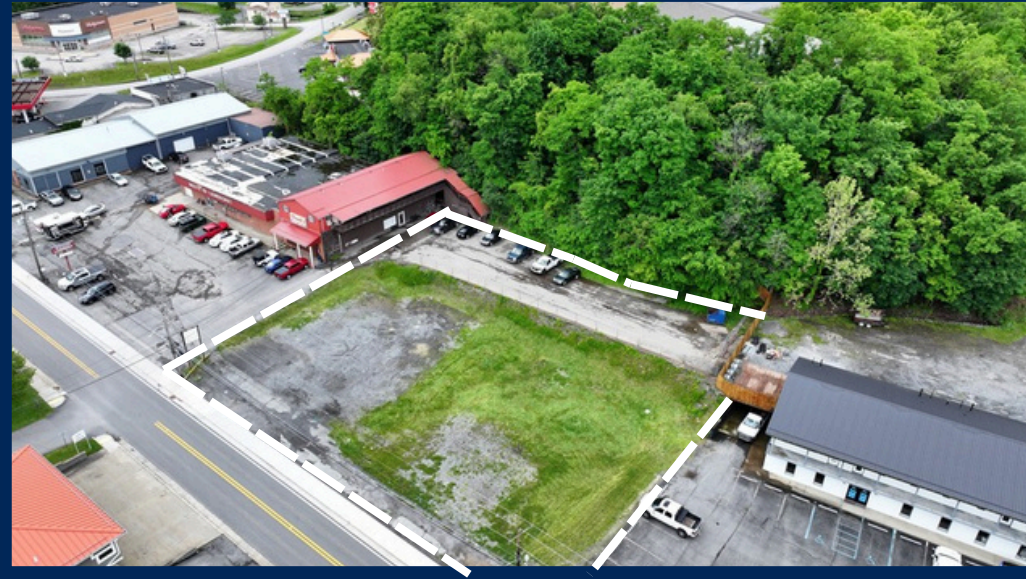
**369 HOLLAND AVE
WESTOVER, WV**



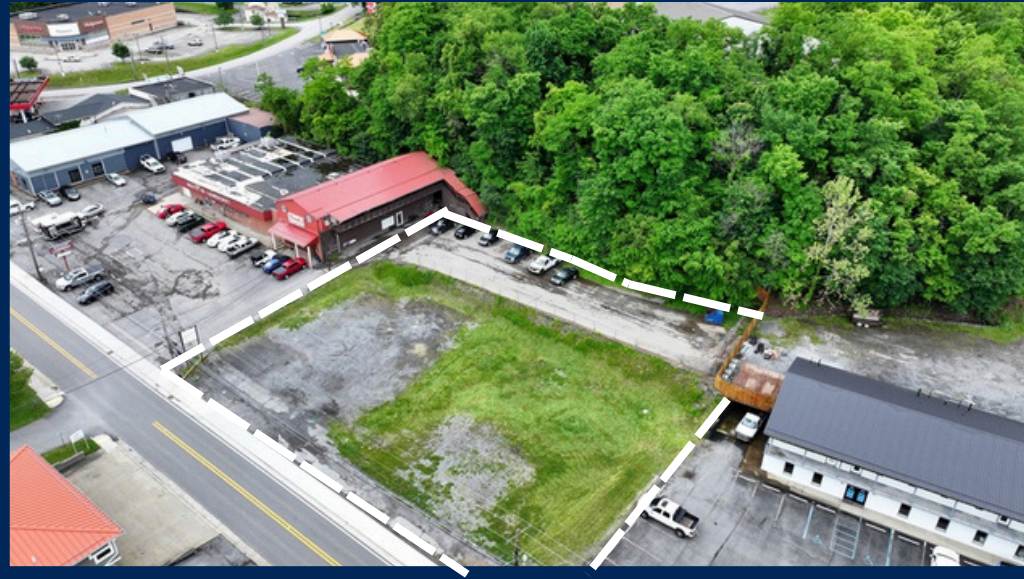
PRIME GROUND LEASE OPPORTUNITY IN WESTOVER

369 HOLLAND AVE | WESTOVER, WEST VIRGINIA 26501

AERIAL PHOTOS



AERIAL PHOTOS



AERIAL PHOTOS



PREMIER COMMERCIAL

REAL ESTATE SERVICES

Douglas C. Wise - Broker

INQUIRE TODAY!

304.777.4050

PremierCommercialRES.com