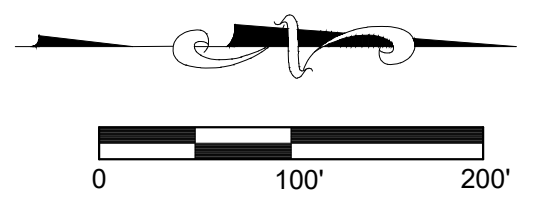
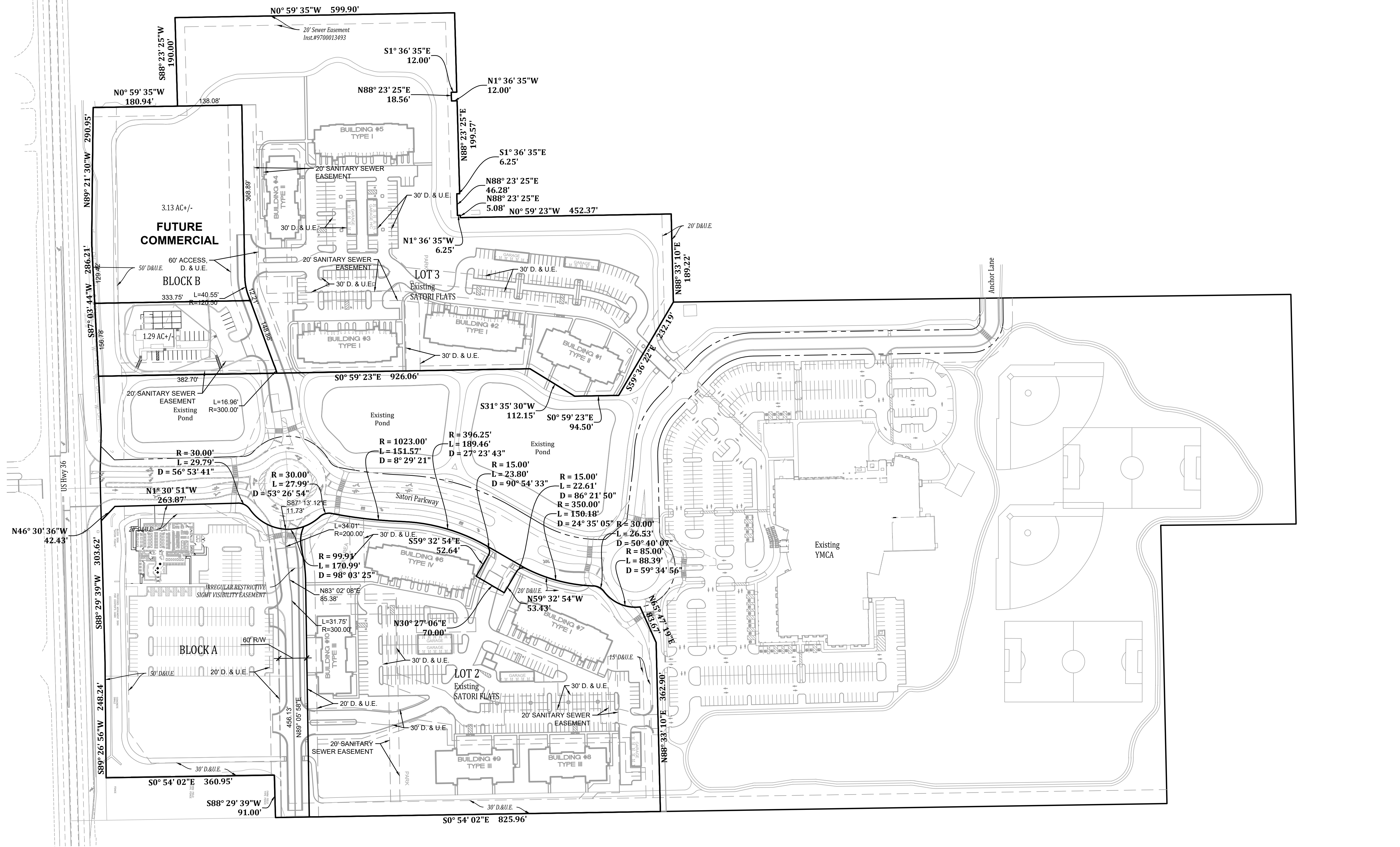


shoyes P:\2015\15049\PM\15049\Engineering\Preliminary\Layout\Lizton State Bank\10-12-2021.dwg Oct 12, 2021 - 7:38am



OVERALL PLAN
LIZTON STATE BANK - SATORI POINTE
WASHINGTON TOWNSHIP
AVON, INDIANA

NOT FOR CONSTRUCTION

BANNING
ENGINEERING
853 COLUMBIA ROAD, SUITE #101
PLAINFIELD, IN 46168
BUS: (317) 707-3700 FAX: (317) 707-3800
E-MAIL: Banning@BanningEngineering.com
WEB: www.BanningEngineering.com



Project No: 15049H
Sheet No:

C100

Revisions		Date

Designed: RFL
Drawn: S.J.H.
Checked:
Scale: 1" = 100'
Date: 10-12-2021