

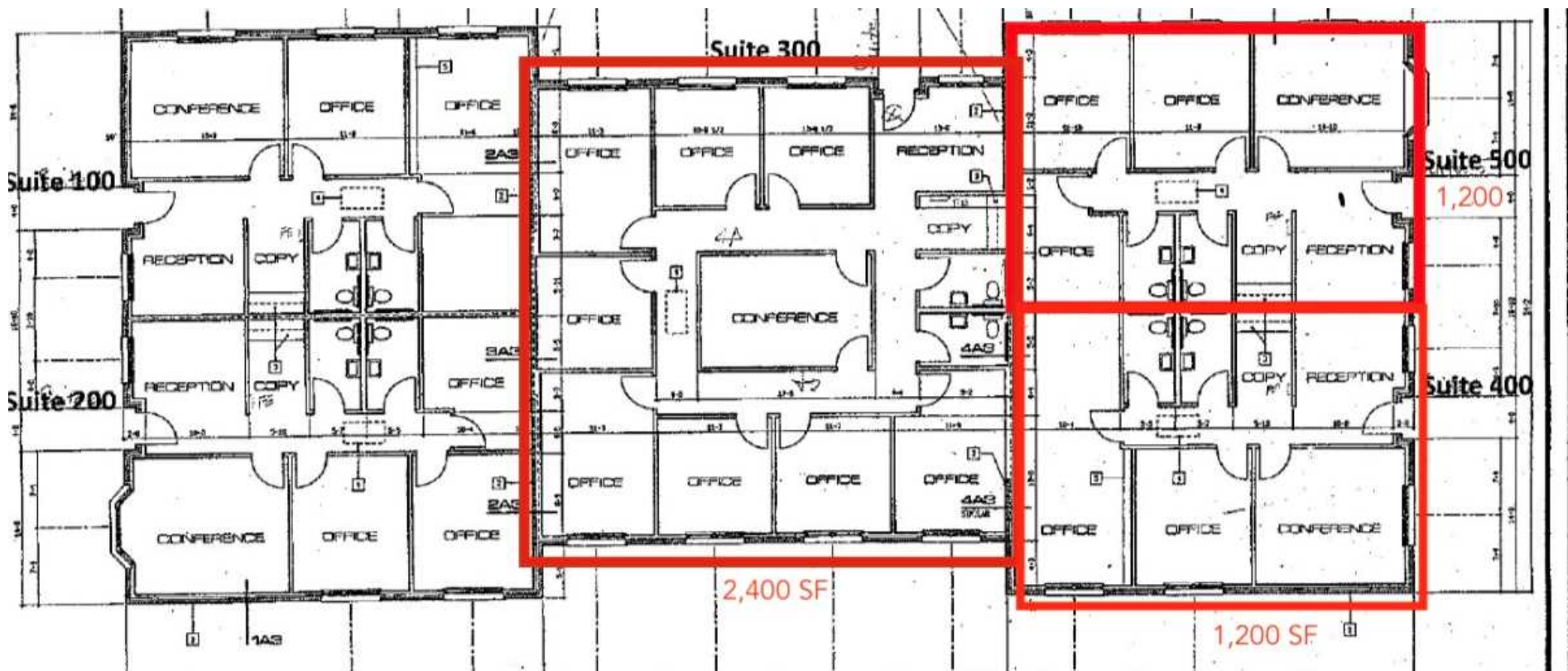
PRIME OFFICE SPACE AVAILABLE IN DOWNTOWN KENNESAW

1,200 - 2,400 SF - Private Offices w/Conference
Room, Reception Area & Kitchenette
Rarely Available

3185 CHEROKEE ST, KENNESAW, GA 30144
SUITE 300, SUITE 400, SUITE 500

DONALD B. EDWARDS, JR.
Associate Broker/Commercial Director
(770) 324-3457
don@dbeproperties.com
119563, GA

AALIYAH ZAPATA
Commercial Agent
470-626-5746
aaliyah@thebrightsiderg.com
Office- (770) 240-2004



Property Overview

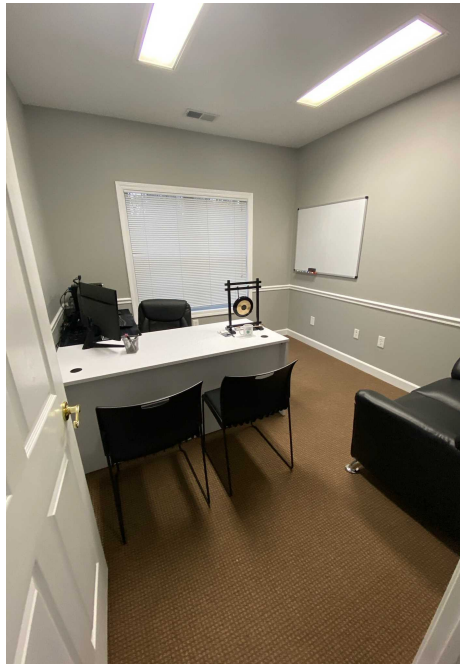
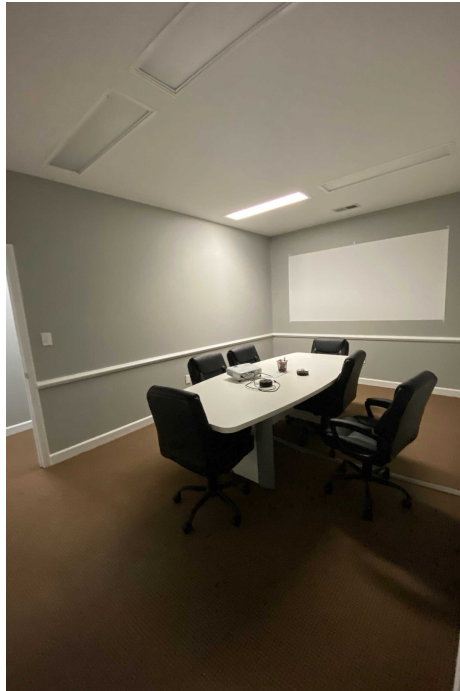
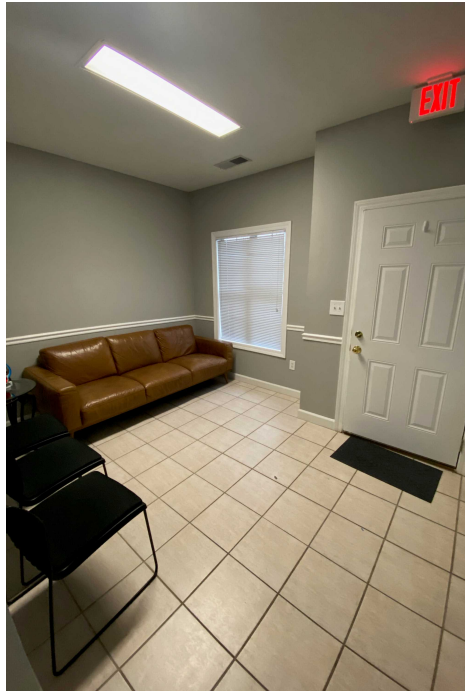
Beautiful office building with two available suites. Suite 300 consists of 2,400 sq ft and includes 8 offices, a conference room, reception area and kitchenette. Suite 400 and 500 each feature 1,200 sq ft, reception, conference room, workroom and restrooms and small offices. Conveniently located on Cherokee Street, less than a mile from downtown Kennesaw with its restaurants, museums, shopping and upscale residential redevelopment. Easy access to I-75 and US 41 (Cobb Pkwy).

Available SF:	1,200 - 2,400
Class:	C
Lease Rate:	\$15.00 sf/yr
CAM	\$2.00
NNN:	Yes
Zoning:	OI
Market:	NW Atlanta
Sub Market	Kennesaw

SUITE 300

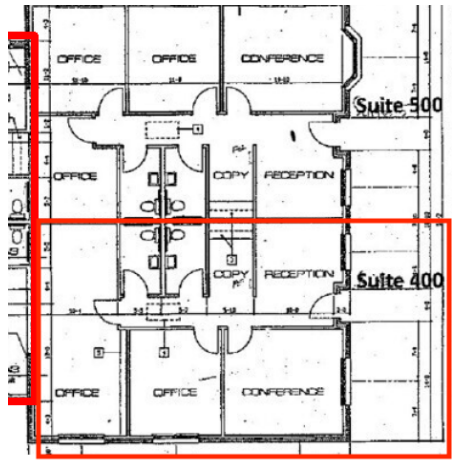


\$3,000 + \$400 CAM /mo
2,400 SF



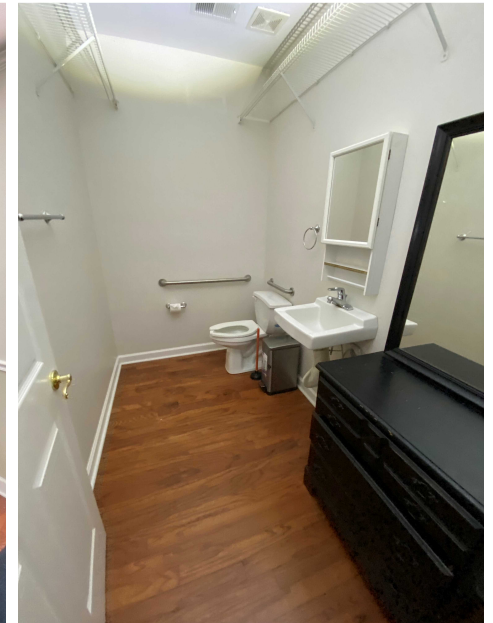
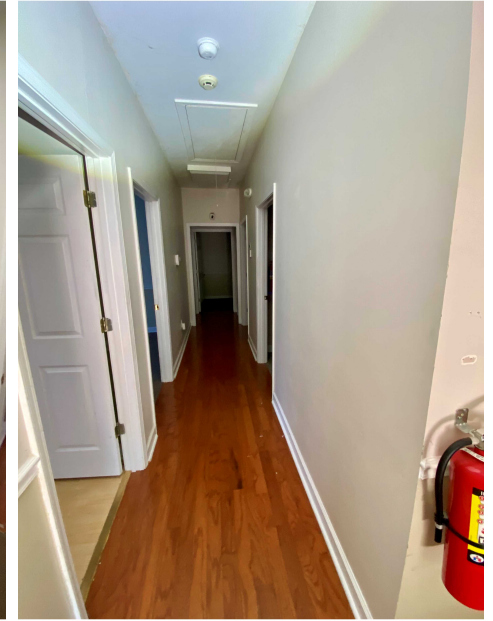
We obtained the information above from sources we believe to be reliable. However, we have not verified its accuracy and make no guarantee, warranty or representation about it. It is submitted subject to the possibility of errors, omissions, change of price, rental or other conditions, prior sale, lease or financing, or withdrawal without notice. We include projections, opinions, assumptions or estimates for example only, and they may not represent current or future performance of the property. You and your tax and legal advisors should conduct your own investigation of the property and transaction.

SUITE 400



SUITE 400 - 1,200 SF

\$1,500 + \$200 CAM / mo
1,200 SF

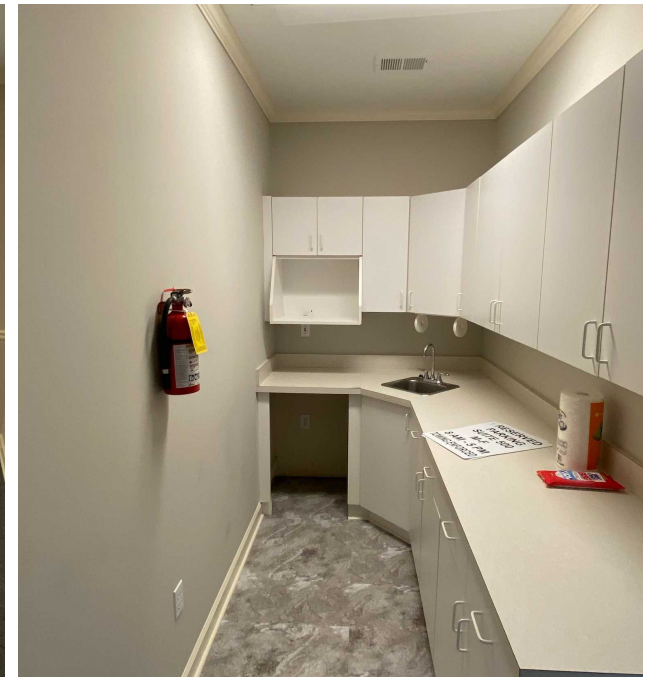


We obtained the information above from sources we believe to be reliable. However, we have not verified its accuracy and make no guarantee, warranty or representation about it. It is submitted subject to the possibility of errors, omissions, change of price, rental or other conditions, prior sale, lease or financing, or withdrawal without notice. We include projections, opinions, assumptions or estimates for example only, and they may not represent current or future performance of the property. You and your tax and legal advisors should conduct your own investigation of the property and transaction.

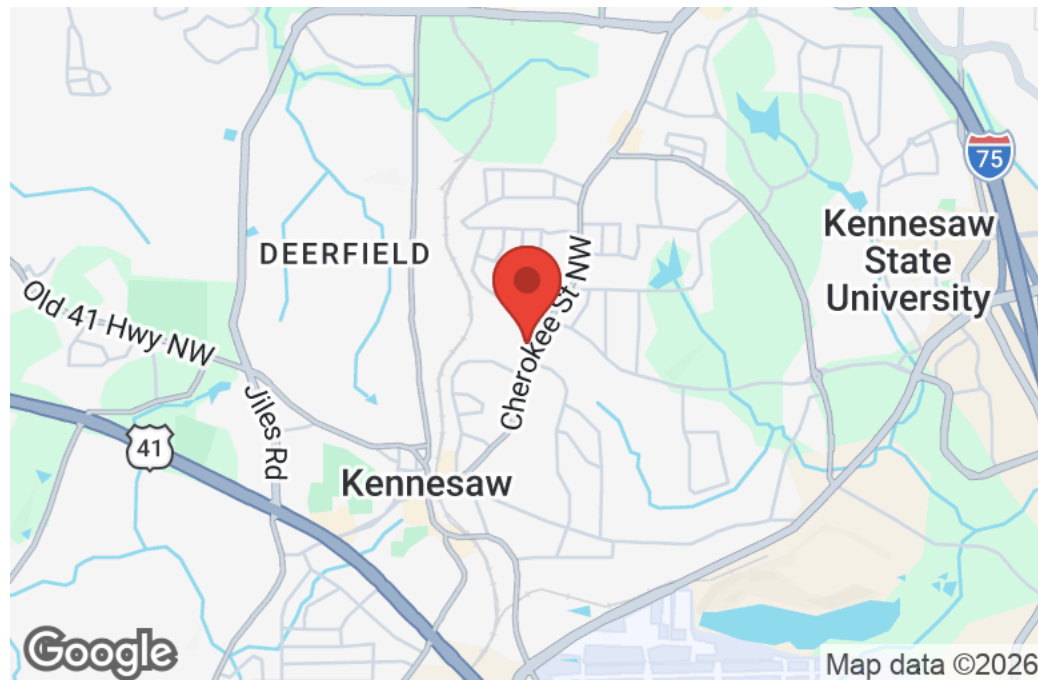
SUITE 500



\$1,500 + \$200 CAM / mo
1,200 SF



We obtained the information above from sources we believe to be reliable. However, we have not verified its accuracy and make no guarantee, warranty or representation about it. It is submitted subject to the possibility of errors, omissions, change of price, rental or other conditions, prior sale, lease or financing, or withdrawal without notice. We include projections, opinions, assumptions or estimates for example only, and they may not represent current or future performance of the property. You and your tax and legal advisors should conduct your own investigation of the property and transaction.



BUSINESS MAP

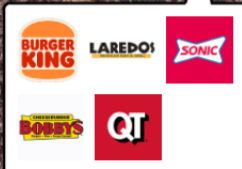


Green Park Senior Care Home

Burnt Hickory Brewery

Kennesaw Place

Kennesaw Recreation Center



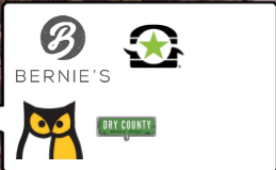
Mustang Stadium



Pinetree Country Club Lake



Kennesaw State University



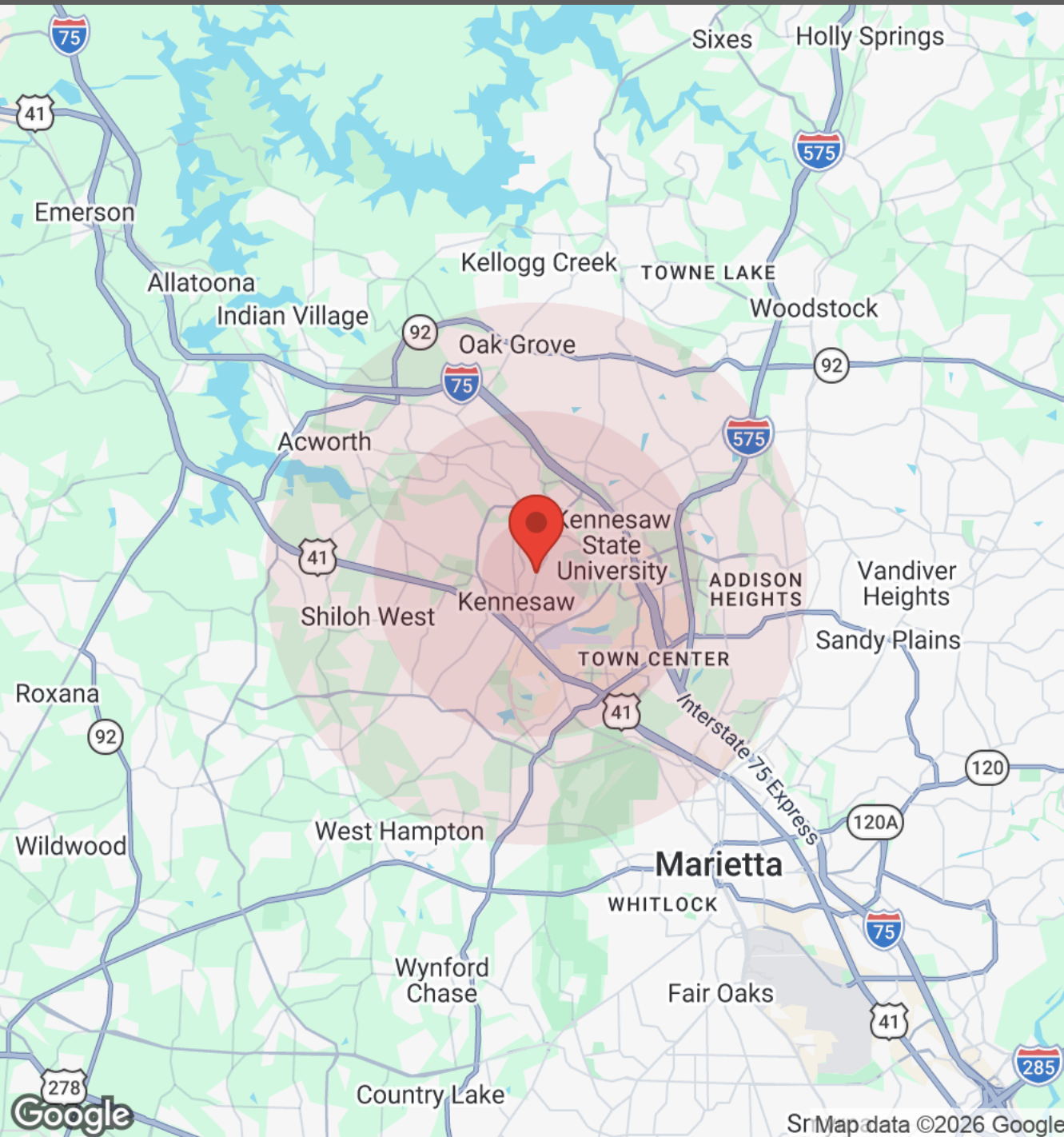
Bernard A. Zuckerman Museum of Art



Social Security Administration

Fifth Third Bank Stadium

DEMOGRAPHICS



Population	1 Mile	3 Miles	5 Miles
Male	5,036	41,376	92,067
Female	5,488	40,374	94,137
Total Population	10,524	81,750	186,203

Age	1 Mile	3 Miles	5 Miles
Ages 0-14	1,622	12,741	30,994
Ages 15-24	2,078	17,146	30,939
Ages 25-54	4,272	32,302	74,557
Ages 55-64	1,140	9,202	22,745
Ages 65+	1,411	10,359	26,967

Race	1 Mile	3 Miles	5 Miles
White	5,849	42,175	102,710
Black	2,350	21,615	43,404
Am In/AK Nat	13	74	149
Hawaiian	2	25	37
Hispanic	1,507	10,783	23,573
Asian	480	4,733	11,228
Multi-Racial	272	2,052	4,525
Other	52	294	577

Income	1 Mile	3 Miles	5 Miles
Median	\$73,859	\$93,168	\$100,646
< \$15,000	391	2,410	4,353
\$15,000-\$24,999	182	1,179	2,579
\$25,000-\$34,999	234	1,530	3,247
\$35,000-\$49,999	511	2,939	5,632
\$50,000-\$74,999	870	4,488	9,607
\$75,000-\$99,999	584	4,126	9,713
\$100,000-\$149,999	780	6,635	15,268
\$150,000-\$199,999	319	3,214	8,660
> \$200,000	428	4,567	11,690

Housing	1 Mile	3 Miles	5 Miles
Total Units	4,488	32,372	73,578
Occupied	4,300	31,087	70,748
Owner Occupied	2,129	17,547	44,971
Renter Occupied	2,171	13,540	25,777
Vacant	188	1,285	2,830

We obtained the information above from sources we believe to be reliable. However, we have not verified its accuracy and make no guarantee, warranty or representation about it. It is submitted subject to the possibility of errors, omissions, change of price, rental or other conditions, prior sale, lease or financing, or withdrawal without notice. We include projections, opinions, assumptions or estimates for example only, and they may not represent current or future performance of the property. You and your tax and legal advisors should conduct your own investigation of the property and transaction.



DONALD B EDWARDS JR

Commercial Director and Associate Broker

Raised in Atlanta Georgia and licensed in 1984, my first transaction was an industrial lease for a Canadian firm seeking space in the Atlanta area. Since then I have done industrial, retail, office, multifamily, land and residential sales, as well as landlord and tenant rep, property management and site selection for national franchises. As head of the trust real estate, department for all the South Trust Banks, I was responsible for a staff and a \$750M portfolio of diverse assets including retail, office, land, mining, timber, farms, leases, mortgages, property inspections and asset management from coast to coast. In addition, I have over 18 years of commercial and residential construction experience. My land deals have included assemblages, out parcels, mini warehouses and zoning. As a past president of the Association of Georgia Real Estate Exchangors, I have experience in 1031 exchanges. In addition, I have passed all the CCIM course work.

Cell: 770.324.3457
Office: 770-240-2004
don@dbeproperties.com

Administrative/Additional Contacts:
christintherealtor@gmail.com

Showing Contact:
Aaliyah Zapata 470-626-5746
aaliyah@thebrightsiderg.com

DISCLAIMER

All materials and information received or derived from DBE Properties, its directors, officers, agents, advisors, affiliates and/or any third party sources are provided without representation or warranty as to completeness, veracity, or accuracy, condition of the property, compliance or lack of compliance with applicable governmental requirements, developability or suitability, financial performance of the property, projected financial performance of the property for any party's intended use or any and all other matters.

Neither DBE Properties, its directors, officers, agents, advisors, or affiliates makes any representation or warranty, express or implied, as to accuracy or completeness of the any materials or information provided, derived, or received. Materials and information from any source, whether written or verbal, that may be furnished for review are not a substitute for a party's active conduct of its own due diligence to determine these and other matters of significance to such party. DBE Properties will not investigate or verify any such matters or conduct due diligence for a party unless otherwise agreed in writing.

EACH PARTY SHALL CONDUCT ITS OWN INDEPENDENT INVESTIGATION AND DUE DILIGENCE.

Any party contemplating or under contract or in escrow for a transaction is urged to verify all information and to conduct their own inspections and investigations including through appropriate third-party independent professionals selected by such party. All financial data should be verified by the party including by obtaining and reading applicable documents and reports and consulting appropriate independent professionals. DBE Properties makes no warranties and/or representations regarding the veracity, completeness, or relevance of any financial data or assumptions. DBE Properties does not serve as a financial advisor to any party regarding any proposed transaction.

All data and assumptions regarding financial performance, including that used for financial modeling purposes, may differ from actual data or performance. Any estimates of market rents and/or projected rents that may be provided to a party do not necessarily mean that rents can be established at or increased to that level. Parties must evaluate any applicable contractual and governmental limitations as well as market conditions, vacancy factors and other issues in order to determine rents from or for the property. Legal questions should be discussed by the party with an attorney. Tax questions should be discussed by the party with a certified public accountant or tax attorney. Title questions should be discussed by the party with a title officer or attorney. Questions regarding the condition of the property and whether the property complies with applicable governmental requirements should be discussed by the party with appropriate engineers, architects, contractors, other consultants, and governmental agencies. All properties and services are marketed by DBE Properties in compliance with all applicable fair housing and equal opportunity laws.