

17251 Hesperian Blvd

SAN LORENZO, CA



**±1,315 SF HIGH VISIBILITY RETAIL/PROFESSIONAL OFFICE
FOR LEASE**

NEWMARK

SHAWN KLEIN | DIRECTOR | T 510-923-6209 | SHAWN.KLEIN@NMRK.COM | CA RE LIC. #01426551



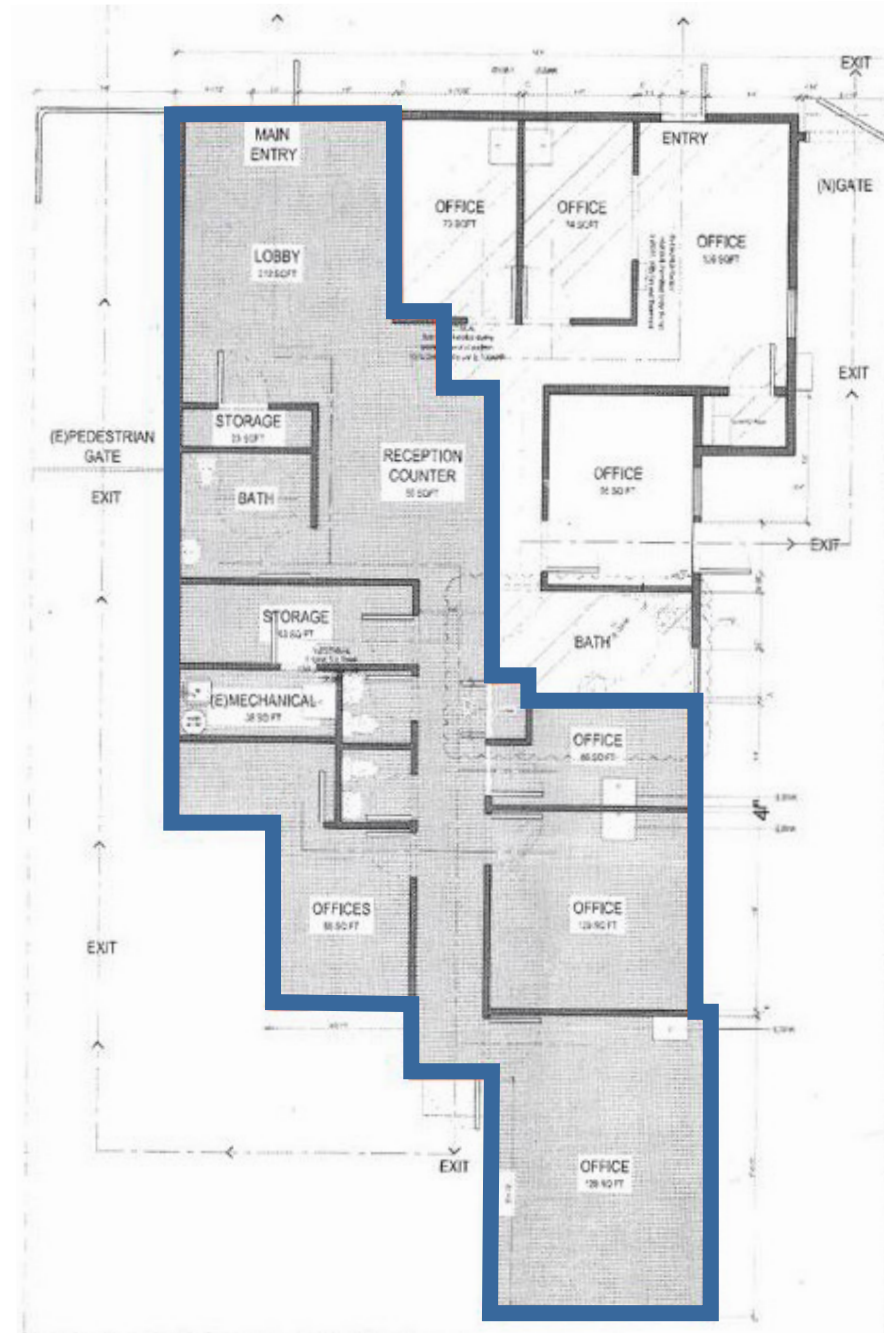
PROPERTY HIGHLIGHTS

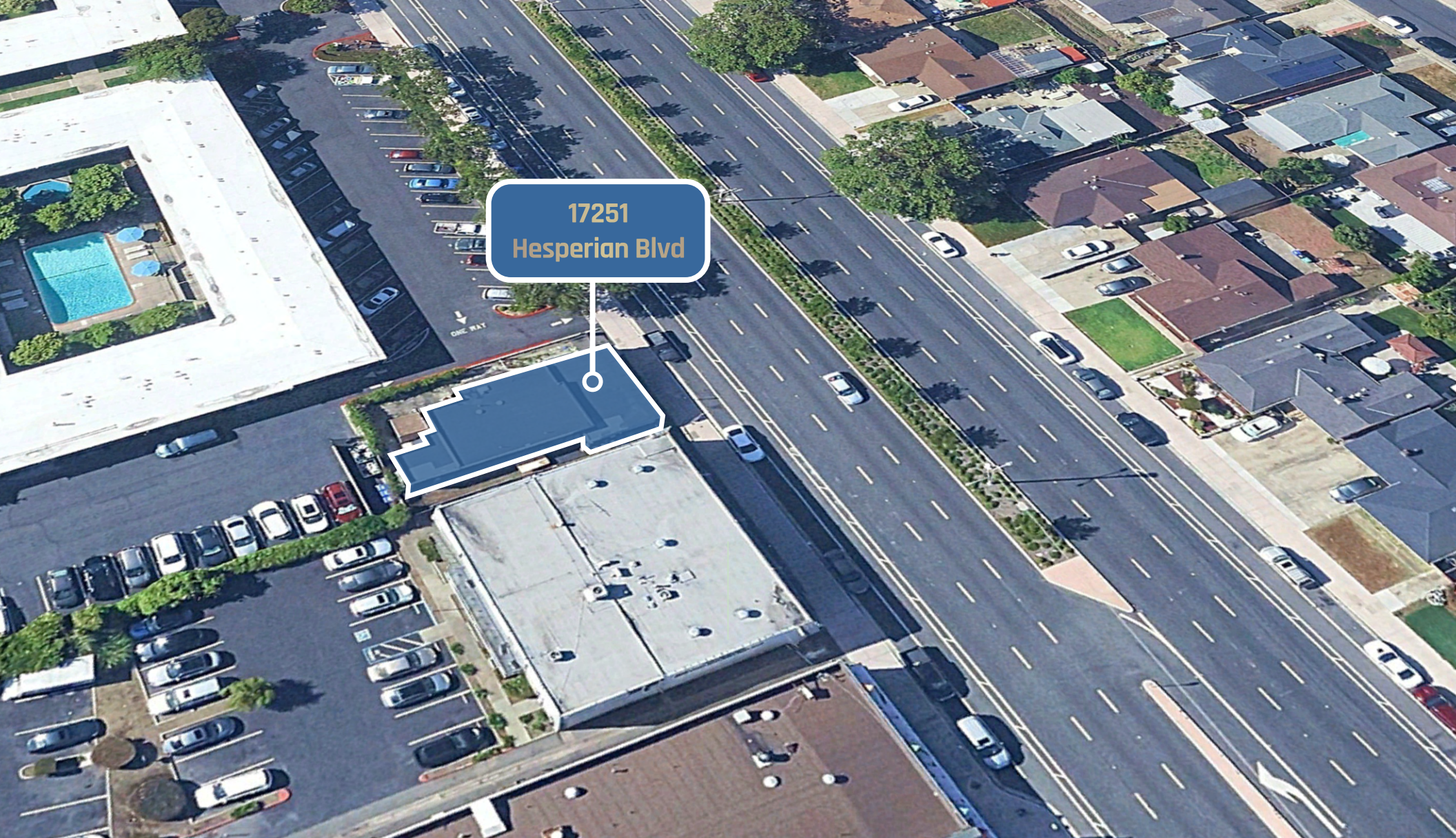
ADDRESS	17251 Hesperian Blvd, San Lorenzo, CA
SQUARE FOOTAGE	±1,315 SF
ZONING	C-1: Retail/Business *Ideal for professional office, law/accounting/real estate office, tutoring/counseling/therapy office, beauty salon, barber shop, etc.
FEATURES	<ul style="list-style-type: none"> • Two-tenant building • Reception area, multiple private offices with sinks & three (3) restrooms (one ADA compliant) • Small backyard area • Street parking
LOCATION	<ul style="list-style-type: none"> • Proximity to I-880 freeway • Located on a high-traffic corridor • Abundant retail and restaurants within walking distance
AVAILABLE	Now
PRICING	To Be Determined + NNN

FLOOR PLAN

±1,315 SF

Available Now





17251
Hesperian Blvd

SHAWN KLEIN
DIRECTOR
T 510-923-6209
SHAWN.KLEIN@NMRK.COM
CA RE LIC. #01426551

NEWMARK

The information contained herein has been obtained from sources deemed reliable but has not been verified and no guarantee, warranty or representation, either express or implied, is made with respect to such information. Terms of sale or lease and availability are subject to change or withdrawal without notice.