



NNN Education Investment Opportunity

7.11% Cap Rate | 10 Year Lease



Dany Koe

Vice President | Principal
+1 404 892 7248
dany.koe@colliers.com

KB Yabuku

Vice President
+1 770 539 5151
kb.yabuku@colliers.com

1230 Peachtree St NE
Suite 800
Atlanta, GA 30309
Main: +1 404 888 9000
colliers.com

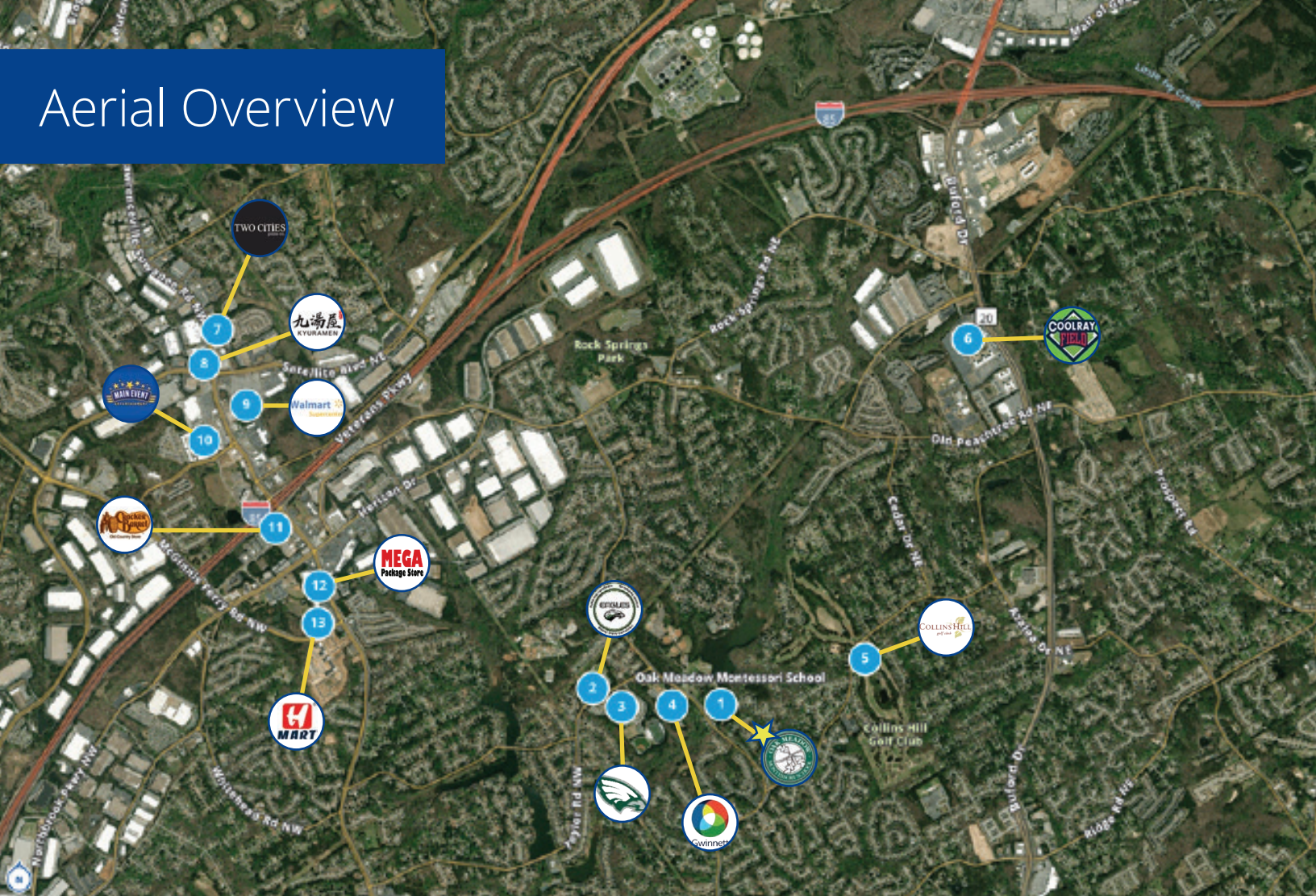
Oak Meadow Montessori School 2145 Collins Hill Road Lawrenceville, GA 30043

- Sales Price: \$3,200,000.00
- NOI: \$225,600
- NNN Investment: No landlord responsibilities
- Lease Term: Through February 2032
- Two buildings totaling 11,200 SF on 5 acres
- Renovated in 2014
- Three outdoor play areas
- Ample parking
- Accredited by the American Montessori Society and Cognia/ SACS

Photos



Aerial Overview

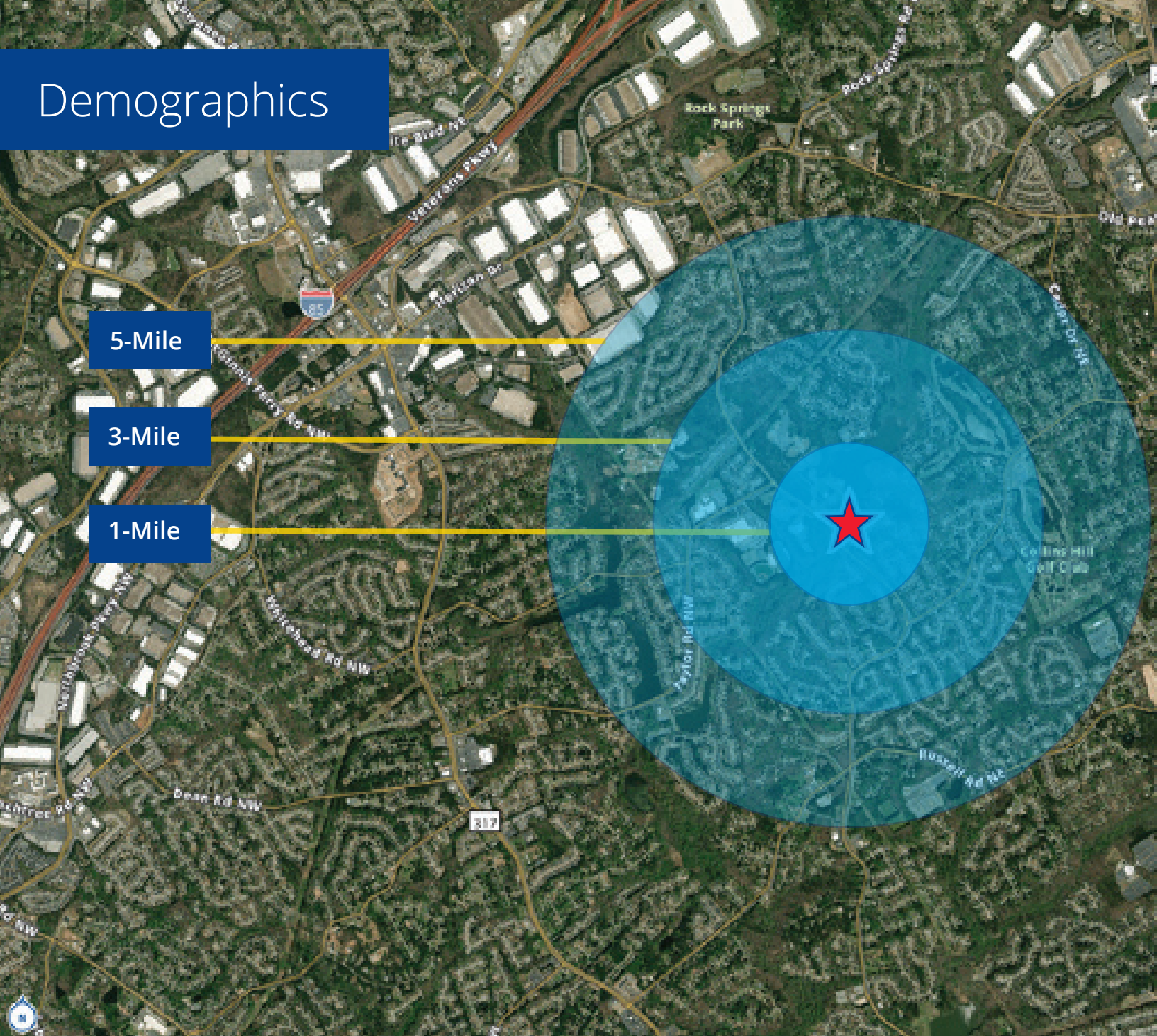


Map Overview



★ 1	Oak Meadow Montessori School	2145 Collins Hill Rd
2	Walnut Grove Elementary	75 Taylor Rd
3	Collins Hill High School	50 Taylor Rd
4	Collins Hill Park Aquatic Center	2200 Collins Hill Rd
5	Collins Hill Golf Club	585 Camp Perrin Rd
6	Cool Ray Field	2500 Buford Dr
7	Two Cities Pizza Co	3433 Lawrenceville Suwanee Rd
8	Kyuramen Suwanee	3320 Lawrenceville Suwanee Rd
9	Walmart Supercenter	3245 Lawrenceville Suwanee Rd
10	Main Event Suwanee	471 Northolt Pkwy
11	Cracker Barrel Old Country Store	75 Celebration Dr
12	Mega Package Store	2820 Lawrenceville Suwanee Rd
13	H Mart Suwanee	2700 Lawrenceville Suwanee Rd

Demographics



Radius from Location	1-Mile	3-Miles	5-Miles
2024 Population	8,087	73,502	181,491
2024 Population (Age 0-4)	5.4%	5.2%	5.4%
2024 Median HH Income	\$119,957	\$100,931	\$91,731
2024 Avg. HH Income	\$149,299	\$130,422	\$123,917
2024 Consumer Spending for Education	\$6,072,310	\$47,947,790	\$114,723,166
2024 Spending Potential Index	130	115	109

Photos



Investment Highlights & Advantages

Oak Meadow Montessori School has offered a world-class education experience for families in the Lawrenceville area since 1993. Renovated in 2014, the property consists of 2 buildings totaling 11,200 SF and features multiple open spaces, three outdoor play areas, and ample parking.

- Immediate proximity to Collins Hill Park
- Lakefront access
- Sitting on 5 acres, ripe opportunity for expansion
- Oak Meadow currently serves 146 students (171 capacity), with 110 applications in queue
- Well-established operators have been operating in Lawrenceville for over 29 years
- Licensed by Bright from the Start and rated by Quality Rated

This document has been prepared by Colliers for advertising and general information only. Colliers makes no guarantees, representations or warranties of any kind, expressed or implied, regarding the information including, but not limited to, warranties of content, accuracy and reliability. Any interested party should undertake their own inquiries as to the accuracy of the information. Colliers excludes unequivocally all inferred or implied terms, conditions and warranties arising out of this document and excludes all liability for loss and damages arising there from. This publication is the copyrighted property of Colliers and /or its licensor(s). ©2023. All rights reserved. This communication is not intended to cause or induce breach of an existing listing agreement. Colliers International - Atlanta, LLC

Dany Koe

Vice President | Principal
+1 404 892 7248
dany.koe@colliers.com

KB Yabuku

Vice President
+1 770 539 5151
kb.yabuku@colliers.com



1230 Peachtree St NE
Suite 800
Atlanta, GA 30309
Main: +1 404 888 9000
colliers.com