

For Lease

1114 S Los Angeles Street
Los Angeles, CA 90015

Office / Flex Space
Warehouse
Creative Space

For more information, please contact:

Daniel Park

(213) 446-0396

Danielpark777@hotmail.com

DRE# 01227056

PARK INDUSTRIAL

SPECIALIZING IN INDUSTRIAL REAL ESTATE SERVICES

Park Industrial Realty
800 McGarry St, 5th Floor
Los Angeles, CA 90021
Corporation DRE# 01983713

Property Information

1114 S Los Angeles St, Los Angeles, CA 90015

Available Units: 301: 5,000 SF in Feb 2025
 101: 1,200 SF in Feb 2025
 101b: 2,429 SF
 103: 2,700 SF
 201: 10,581 SF
 302: 5,500 SF
 401a: 6,092 SF
 401b: 1,908 SF

Year Built: 1925

Loading: 1 GL

Zoning: M2

Lease Rate: Call for pricing details

- Prime location in the heart of Downtown LA Fashion District
- Great for office, flex, industrial or creative uses
- Close proximity to mass transit and a wide range of entertainment and dining amenities
- High visibility due to busy major street frontage
- Lots of natural light
- Equipped with freight elevator

All information has been furnished from sources which we deem reliable, but for which we assume no liability. All measurements are approximate. Broker/Owner do not warrant its accuracy. Buyer/Lessee must verify all information.

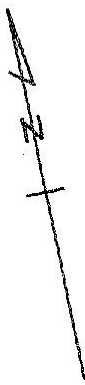
Plat Map

5145 | 21
SCALE 1" = 80'

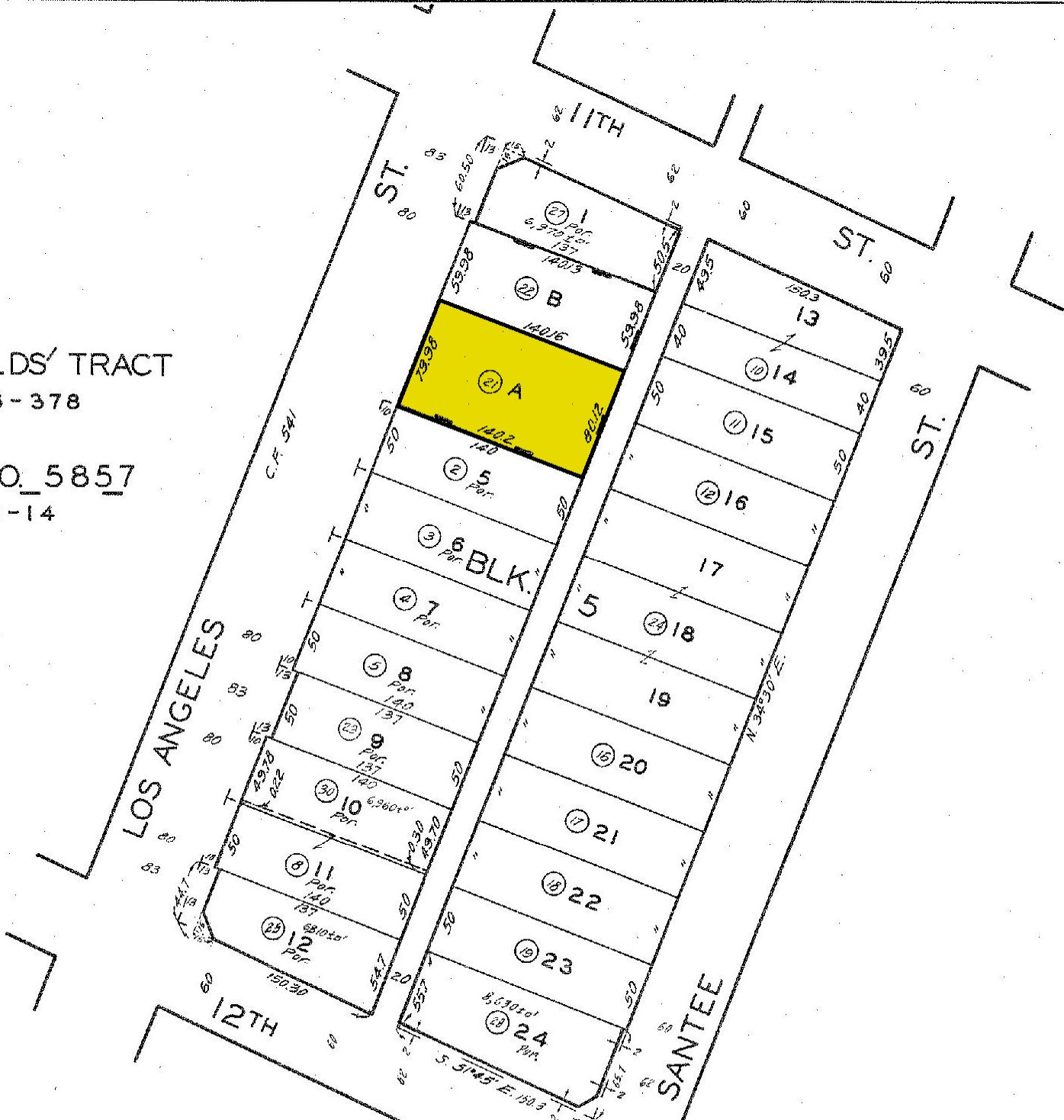
2003

O. W. CHILDS' TRACT
M. R. 6-378

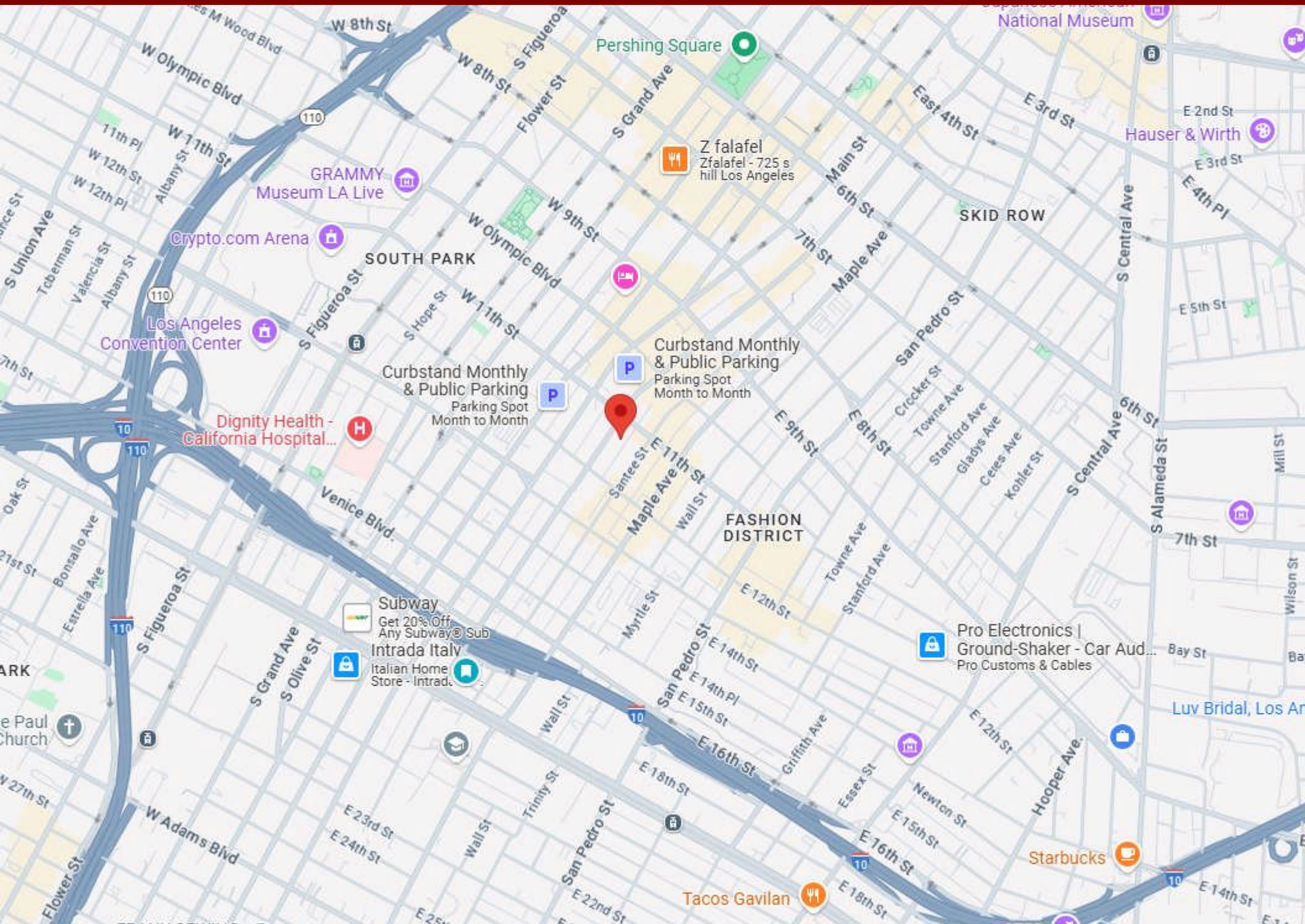
TRACT NO. 5857
M. B. 61-14



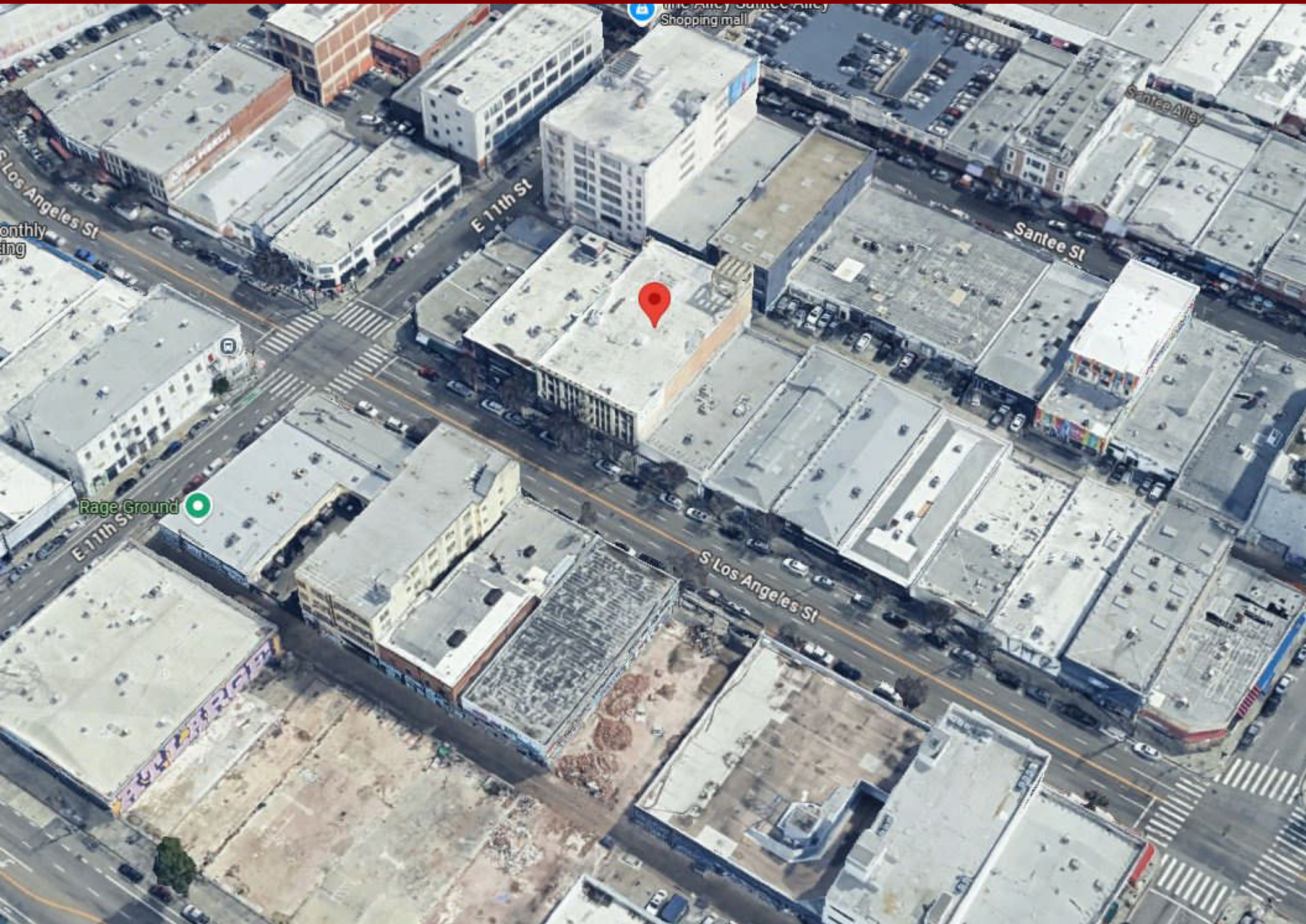
CODE
13263



Area Map



Aerial Photo



Property Photo



Property Photo



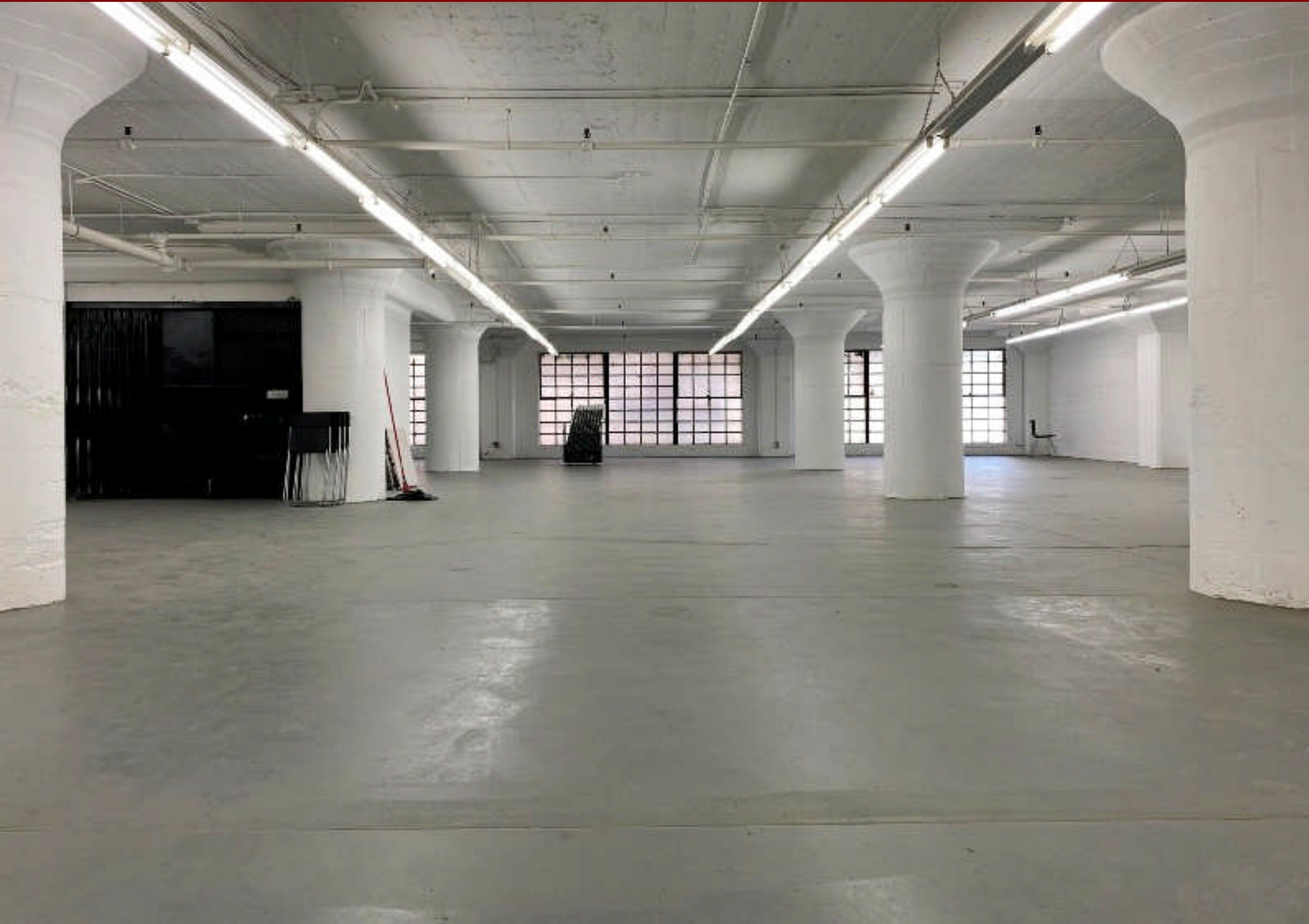
Property Photo



Property Photo



Property Photo



Property Photo



Property Photo



Property Photo

