

MIDAS CREEK OFFICE CONDO

FOR SUBLEASE



PROPERTY DETAILS

668 E. 12225 S., #103-#104
Draper, UT 84020

- \$20.00 PSF Full-Service
- Office Sublease: 1,800–4,225 SF Available
- Master LED: December 2028
- Direct Lease Available
- Seven (7) Private Offices, Large Conference Room, Break Area and Bullpen
- Five Minutes from I-15
- Nearby Several Retail Amenities
- Turnkey Sublease with Furniture Available



SKYE GALLEY
sgalley@newmarkmw.com
direct 801.971.3602
[View Profile](#)

**FULL SERVICE
COMMERCIAL REAL ESTATE**
312 East South Temple
Salt Lake City, Utah 84111
Office 801.456.8800
www.newmarkmw.com



NEWMARK
MOUNTAIN WEST

BEN TURNBOW
MPDT
MANAGEMENT, INC.
RELATIONSHIP BASED REAL ESTATE

SKYE GALLEY
sgalley@newmarkmw.com
direct 801.971.3602
[View Profile](#)

**FULL SERVICE
COMMERCIAL REAL ESTATE**
312 East South Temple
Salt Lake City, Utah 84111
Office 801.456.8800
www.newmarkmw.com

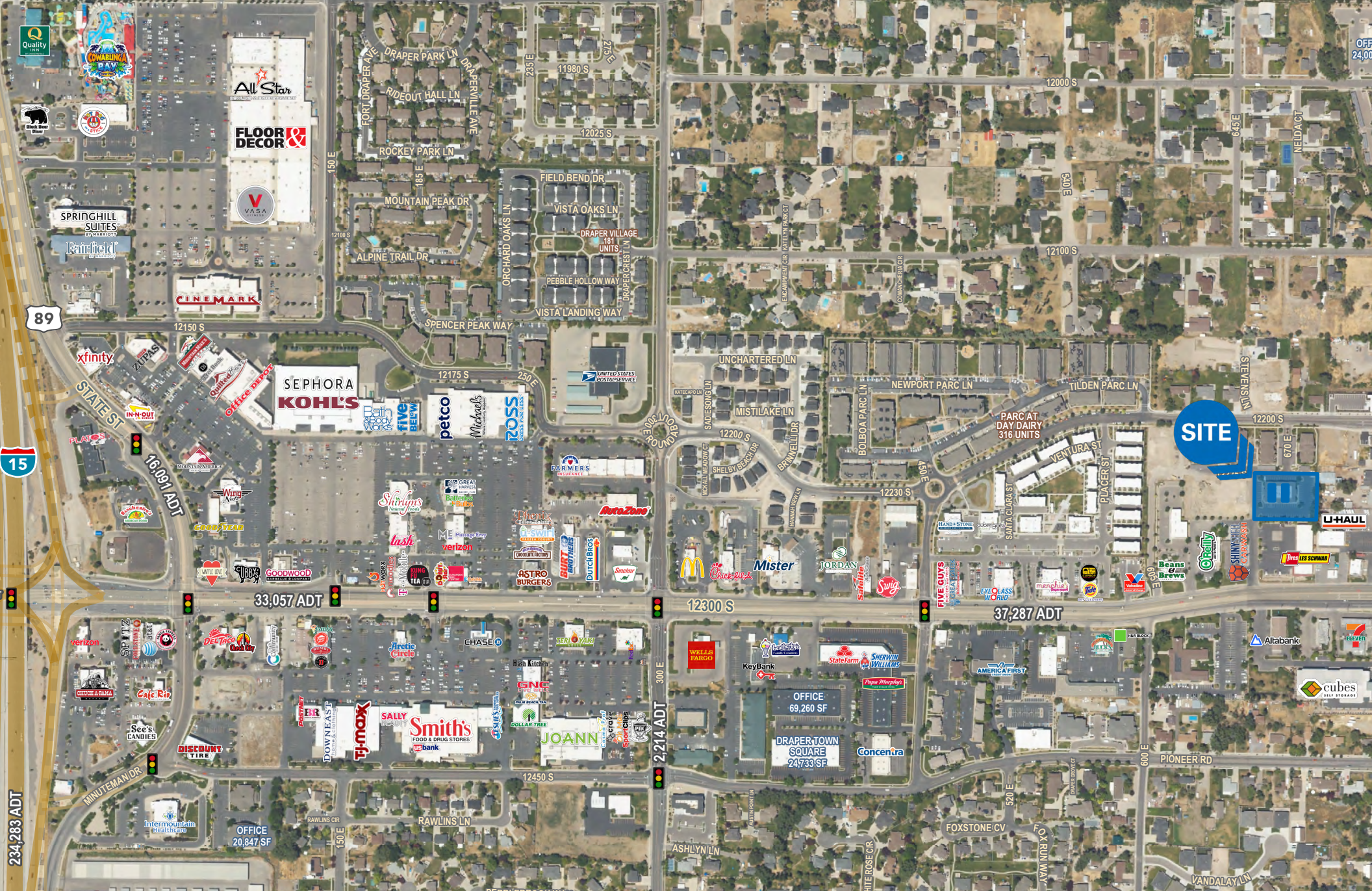
MIDAS CREEK OFFICE CONDO SUBLEASE

FLOOR PLAN



SKYE GALLEY
sgalley@newmarkmw.com
direct 801.971.3602
[View Profile](#)

**FULL SERVICE
COMMERCIAL REAL ESTATE**
312 East South Temple
Salt Lake City, Utah 84111
Office 801.456.8800
www.newmarkmw.com



NEWMARK
MOUNTAIN WEST

BEN TURNBOW
NPDT
MANAGEMENT, INC.
RELATIONSHIP BASED REAL ESTATE

SKYE GALLEY
sgalley@newmarkmw.com
direct 801.971.3602
[View Profile](#)

FULL SERVICE
COMMERCIAL REAL ESTATE
312 East South Temple
Salt Lake City, Utah 84111
Office 801.456.8800
www.newmarkmw.com