



Keegan & Coppin
COMPANY, INC.

FOR LEASE

1300 S. ELISEO DRIVE
GREENBRAE, CA

Best Medical Office
in Central Marin



1300

Go beyond broker.

REPRESENTED BY:

VESA BECAM, PARTNER
LIC # 01459190 (415) 461-1010, EXT 114
VESA@KEEGANCOPPIN.COM



MEDICAL OFFICE SPACE FOR LEASE



1300 S. ELISEO DRIVE
GREENBRAE, CA

**BEST MEDICAL OFFICE
IN CENTRAL MARIN**

PROPERTY INFORMATION

HIGHLIGHTS

- Excellent medical community location
- Abundant parking
- Close proximity to MarinHealth Medical Center
- Perfect for sole proprietors
- Easy access to local amenities
- Newly remodeled common areas

OFFICE SPACE

- Suite 101:** 921+/- sq ft
- Suite 104:** 891+/- sq ft
- Suite 207:** 1,689+/- sq ft

DESCRIPTION

- Medical office, diagnostic lab space. Flexible layout.
- Efficient ground floor medical space with 4 treatment rooms.
- Well-appointed medical space with high-end finishes throughout. 9 treatment rooms.

LEASE TERMS

Size
891 - 1,689+/- sq ft

Rate
\$4.50 per sq ft

Terms
Gross

Parking
4:1000

Keegan & Coppin Co., Inc.
101 Larkspur Landing Circle, Ste. 112
Larkspur, CA 94939
www.keegancoppin.com
(415) 461-1010

The above information, while not guaranteed, has been secured from sources we believe to be reliable. Submitted subject to error, change or withdrawal. An interested party should verify the status of the property and the information herein.

REPRESENTED BY:

VESA BECAM, PARTNER
LIC # 01459190 (415) 461-1010, EXT 114
VESA@KEEGANCOPPIN.COM



FLOOR PLAN

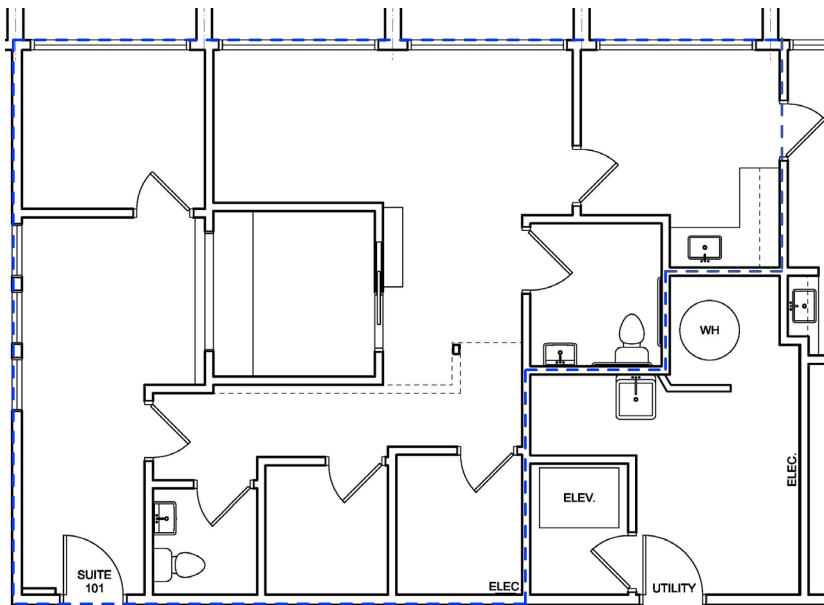


1300 S. ELISEO DRIVE
GREENBRAE, CA

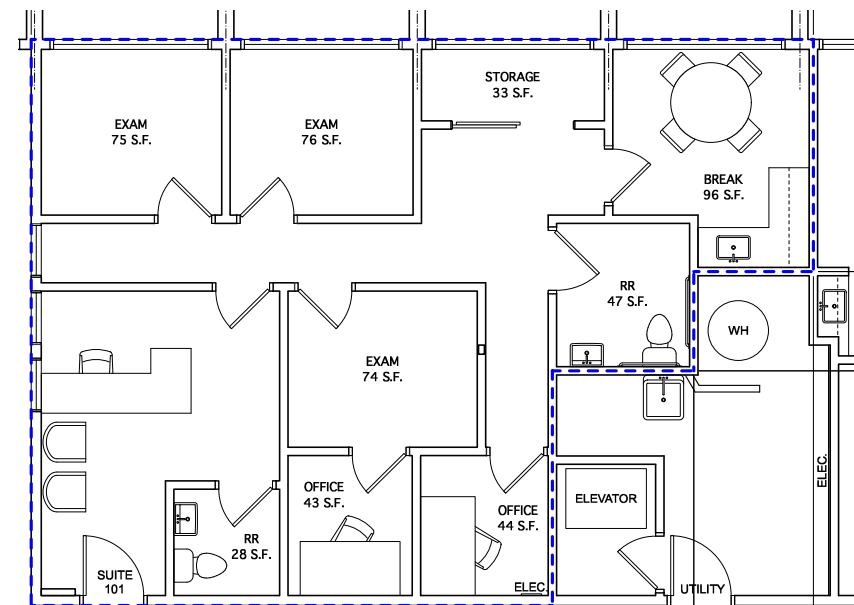
**BEST MEDICAL OFFICE
IN CENTRAL MARIN**

SUITE 101
921+/- RSF

CURRENT FLOOR PLAN



PROPOSED FLOOR PLAN



REPRESENTED BY:

VESA BECAM, PARTNER
LIC # 01459190 (415) 461-1010, EXT 114
VESA@KEEGANCOPPIN.COM

The above information, while not guaranteed, has been secured from sources we believe to be reliable. Submitted subject to error, change or withdrawal. An interested party should verify the status of the property and the information herein.



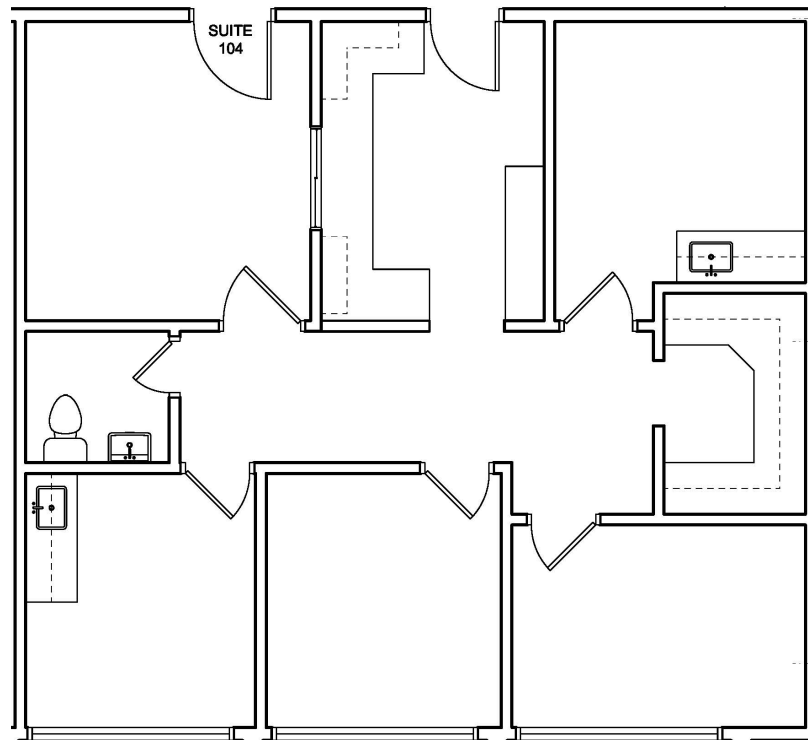
FLOOR PLAN



1300 S. ELISEO DRIVE
GREENBRAE, CA

**BEST MEDICAL OFFICE
IN CENTRAL MARIN**

SUITE 104
891+/- RSF



REPRESENTED BY:

VESA BECAM, PARTNER
LIC # 01459190 (415) 461-1010, EXT 114
VESA@KEEGANCOPPIN.COM

The above information, while not guaranteed, has been secured from sources we believe to be reliable. Submitted subject to error, change or withdrawal. An interested party should verify the status of the property and the information herein.



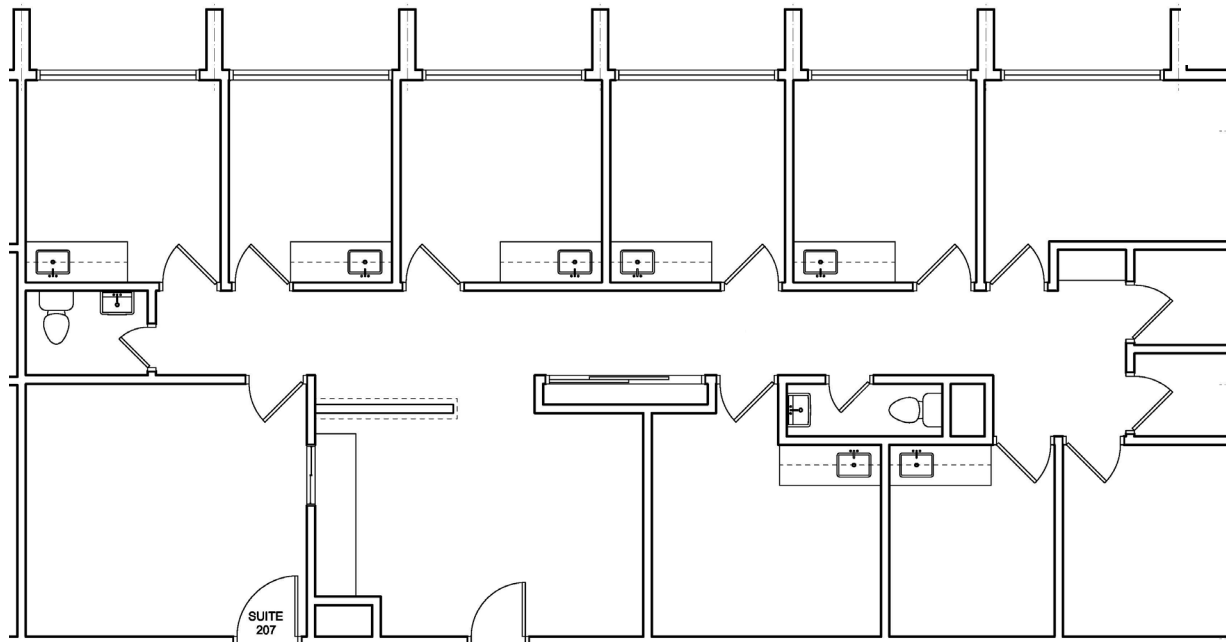
FLOOR PLAN



1300 S. ELISEO DRIVE
GREENBRAE, CA

**BEST MEDICAL OFFICE
IN CENTRAL MARIN**

SUITE 207
1,689+/- RSF



REPRESENTED BY:

VESA BECAM, PARTNER
LIC # 01459190 (415) 461-1010, EXT 114
VESA@KEEGANCOPPIN.COM

The above information, while not guaranteed, has been secured from sources we believe to be reliable. Submitted subject to error, change or withdrawal. An interested party should verify the status of the property and the information herein.