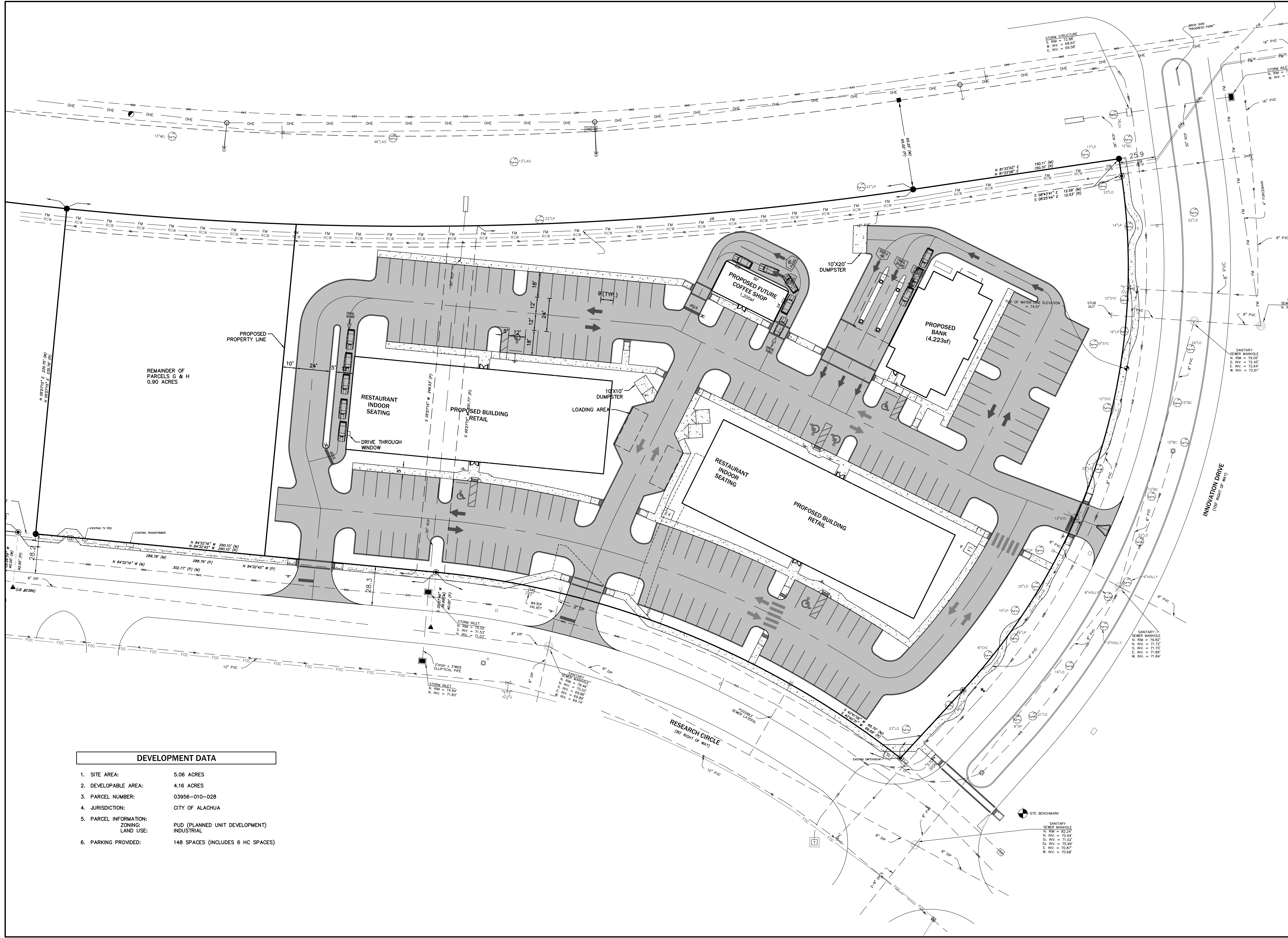


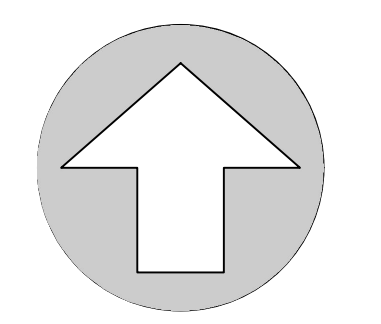
\\server3\eng\projects\Progress Center Parcels G & H (2019)\Plans\Current\DWG\Concepts\2023 Concept Plan\190541.DWG, C800 - CONCEPT PLAN, 4/17/2023 4:13:52 PM, AutoCAD PDF (General Documentation)pc3, NJG



DEVELOPMENT DATA	
1. SITE AREA:	5.06 ACRES
2. DEVELOPABLE AREA:	4.16 ACRES
3. PARCEL NUMBER:	03956-010-028
4. JURISDICTION:	CITY OF ALACHUA
5. PARCEL INFORMATION: ZONING: LAND USE:	PUD (PLANNED UNIT DEVELOPMENT) INDUSTRIAL
6. PARKING PROVIDED:	148 SPACES (INCLUDES 6 HC SPACES)



EB 2389
720 S.W. 2nd Ave., South Tower, Suite 300
GAINESVILLE, FLORIDA 32601
TEL: 352.373.3541
www.edafl.com mail@edafl.com



NORTH
SCALE: 1" = 30'
0 15 30 60
GRAPHIC SCALE

No.	Date	Comment

Professional Engineer of Record:

Engineer Certificate No.

Project No: 19-054

Project phase: CONCEPTUAL

Project title: PROGRESS CENTER PARCELS G & H CITY OF ALACHUA, FLORIDA

Sheet title: CONCEPT PLAN

Designed: SJR Sheet No.:

Drawn: NJG

Checked: TAR

Date: 04/17/23

C800