

5700 Stoneridge Mall Road

PLEASANTON, CA

5700 STONERIDGE
MALL ROAD

NEWMARK

PROPERTY OVERVIEW

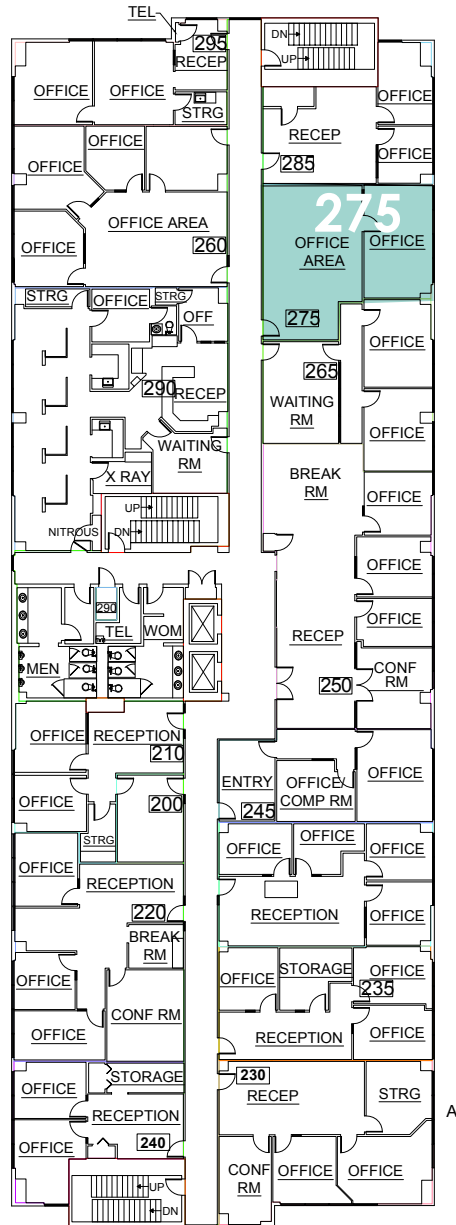
- Walking distance to BART - 45 minutes to Financial District
- Walking distance to Stoneridge Mall, Cheesecake Factory and PF Chang's.
- Proximity to retail, restaurants and hotels
- Strong local based ownership
- Building recently enhanced with Comcast fiber, Comcast cable and Wi-Line.
- Monument and eyebrow signage available
- Direct access to Interstate 580 and 680
- Ample parking: 3.5/1,000
- Asking rate: \$2.30 FS

Current Availabilities

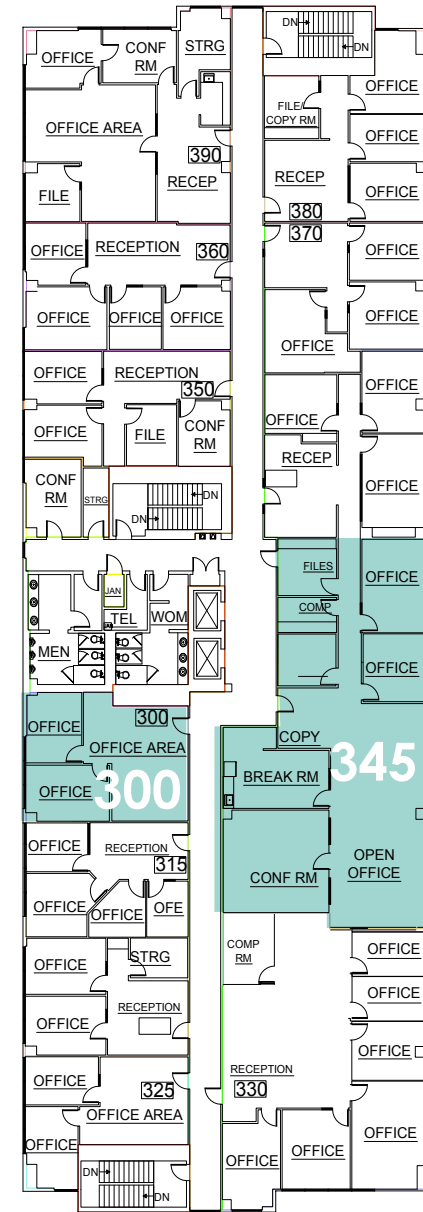
Suite	Size	Available	Comments
275	±969 SF	Available Now	Reception area, one (1) private offices
300	±891 SF	Available 11/1/2025	Reception area, two (2) private offices
345	±3,021 SF	Available Now	Three (3) offices, breakroom, storage room, conference room

AVAILABILITIES

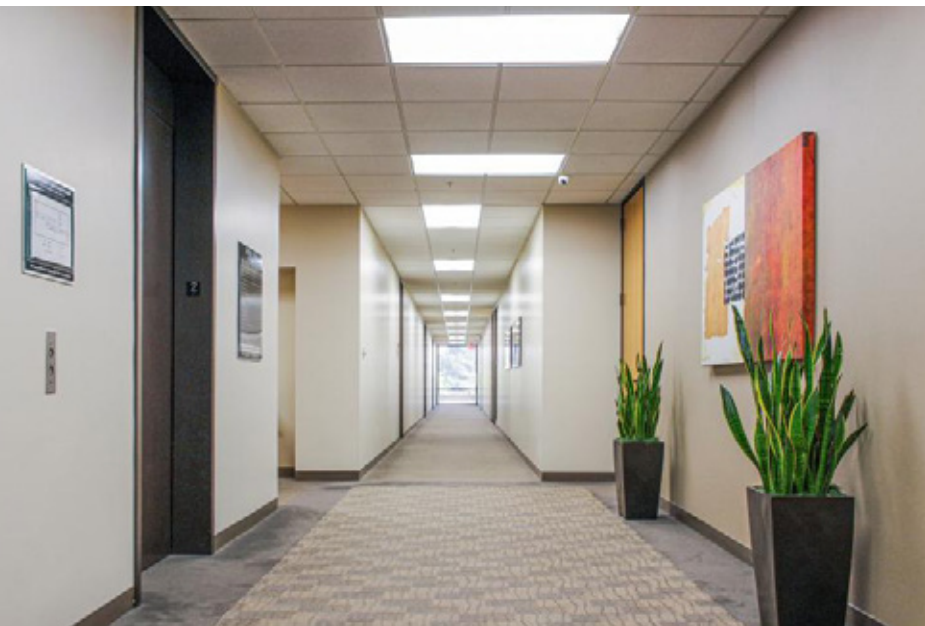
2ND FLOOR



3RD FLOOR



PROPERTY PHOTOS



VICINITY MAP





EXCLUSIVELY OFFERED BY

JUSTIN GRILLI

Senior Managing Director

925.997.1353

justin.grilli@nmrk.com

CA Lic# 01410373

NELSON ROBERTS

Associate

925.210.8741

nelson.roberts@nmrk.com

CA Lic# 02109703

The distributor of this communication is performing acts for which a real estate license is required. The information contained herein has been obtained from sources deemed reliable but has not been verified and no guarantee, warranty or representation, either express or implied, is made with respect to such information. Terms of sale or lease and availability are subject to change or withdrawal without notice.