

For Lease



Crossroads Center Retail Space

HIGH VISIBILITY AT A HIGH-VOLUME INTERSECTION



1005 S. St. Francis Dr. | Suite 115 | Santa Fe, NM 87505

±1,669 SF Available

Ethan Melvin

ethan@sunvista.com | 505 235 9347

NA SunVista] **Got Space™**

Opening the Door to Commercial Real Estate Excellence

For Lease

1005 S. St. Francis Dr. | Suite 115 | Santa Fe, NM 87505

PROPERTY

AVAILABLE

Suite 115: ±1,669 SF

LEASE RATE

\$25.00/SF + NNN

HIGHLIGHTS

- Rare retail opportunity on North Cerrillos Rd.
- Prominent pylon signage at signalized intersection of St. Francis & Cerrillos Rds.
- One of the most trafficked intersections in Santa Fe
- Co-tenancy with well-known retailers such as:
 - AutoZone
 - Chipotle
 - Tiny's Restaurant
 - Stretch Lab
- Close proximity to Rail Yard and Santa Fe Plaza
- Ample parking with 133 shared spaces
- Well maintained & open retail layout
- Ability to construct an additional ±905 SF if needed

ZONING BCD CER

LOCATION

- SEQ Cerrillos Rd. & St. Francis Dr.



For Lease

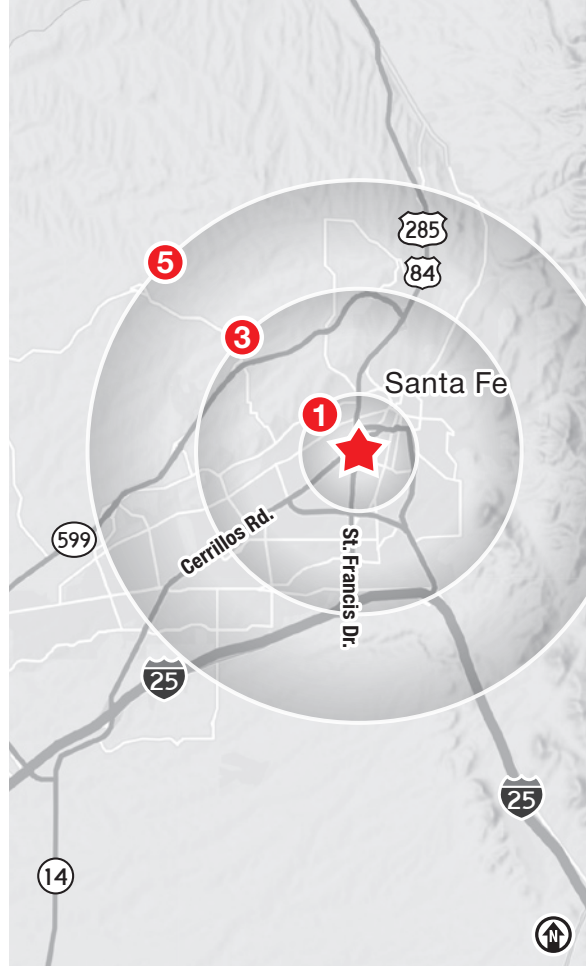
1005 S. St. Francis Dr. | Suite 115 | Santa Fe, NM 87505



LOCATION

Demographics	1 Mile	3 Mile	5 Mile
Total Population	10,664	47,010	76,634
Average HH Income	\$111,145	\$122,547	\$123,649
Daytime Employment	20,167	59,334	70,231

2025 Forecasted by Esri



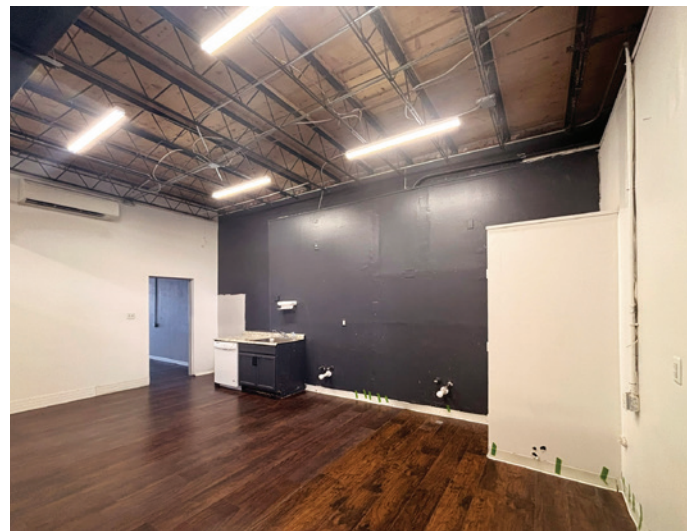
For Lease

1005 S. St. Francis Dr. | Suite 115 | Santa Fe, NM 87505



For Lease

1005 S. St. Francis Dr. | Suite 115 | Santa Fe, NM 87505



NAI SunVista

505 878 0001 | sunvista.com
2424 Louisiana Blvd. NE | Suite 100
Albuquerque, NM 87110

Ethan Melvin
ethan@sunvista.com
505 235 9347

SANTA FE | THE CITY DIFFERENT

The oldest capital city in the United States and the oldest city in New Mexico, Santa Fe is well-known as a center for arts that reflect the multicultural character of the region. Tourism is a major element of the Santa Fe economy, with visitors attracted year-round by the mild climate, outdoor activities and cultural events that the area offers. Most tourist activity takes place in the historic downtown, especially on and around Santa Fe Plaza, a one-block square adjacent to the Palace of the Governors, the original seat of New Mexico's territorial government during the time of Spanish colonization. Other areas include Canyon Road and "Museum Hill", the site of the major art museums of the city as well as the Santa Fe International Folk Art Market. Seasonal activities, such as skiing at nearby Santa Fe Ski Basin in the winter and hiking are also a draw for tourists.



New Mexico
**State
Capitol**



SANTA FE BY THE NUMBERS (Metropolitan Statistical Area, ESRI 2025 Demographics)



158,843
MSA Population



71,242
Households



\$119,650
Avg. Household Income



\$64,195
Md. Disposable Income



8,053
Total Businesses



89,677
Total Employees

FOUNDED IN 1608, SANTA FE IS THE OLDEST STATE CAPITAL IN THE UNITED STATES

SANTA FE ACCOLADES

- #1 of the "15 Best Cities in the U.S." *Travel + Leisure 2025*
- Top 100 Best Places to Live *Livability 2024-2025*
- Among "The World's Greatest Places" *Time 2024*
- One of "The Best Places to Go" *Conde Nast Traveler 2024*
- "Travel Guide Star Award Winners List" *Forbes Travel Guide 2024*
- "Best Fine Dining in the U.S." *TripAdvisor 2023*
- "100 Best Ski Resorts in U.S. & Canada." *Wall Street Journal 2023*
- "Best Art Museums" *USA Today 10 Best 2023*
- One of the "Best Destinations in the West" *Sunset Magazine 2023*



A TOURIST DESTINATION

Santa Fe is the **3rd-Largest Art Market in the United States** after New York and Los Angeles.



A half-mile stretch of Santa Fe's Canyon Road has **more than 100** galleries, boutiques and restaurants "making it the world's densest concentration of art galleries." *FourSeasons.com*