

# FOR LEASE

SHARED OFFICE SPACE

103 E 29<sup>th</sup> Street | Vancouver, WA 98663



900 Washington St, Suite 850, Vancouver, WA  
360.750.5595 | www.fg-cre.com

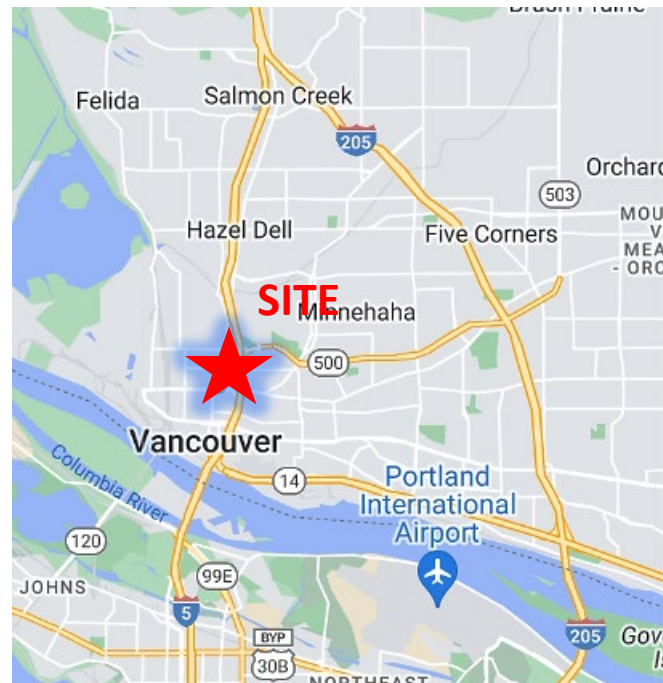


## PROPERTY HIGHLIGHTS

- **SIZE:** Approximately 1,000 RSF, with 4 private offices and 1 dedicated bathroom, shared entrance
- **USE:** General office/professional service
- **RENT:** \$2,000 per month (tenant pays janitorial)
- **LEASE TERM:** 5 years
- **PARKING:** Ample parking - 10 spaces on site at no additional cost!

*\*Conference room and training room available with scheduled use*

*\*Controlled access by front reception*



## FOR MORE INFORMATION:

Scott Higgins  
360.597.0577 | shiggins@fg-cre.com

# FOR LEASE

SHARED OFFICE SPACE

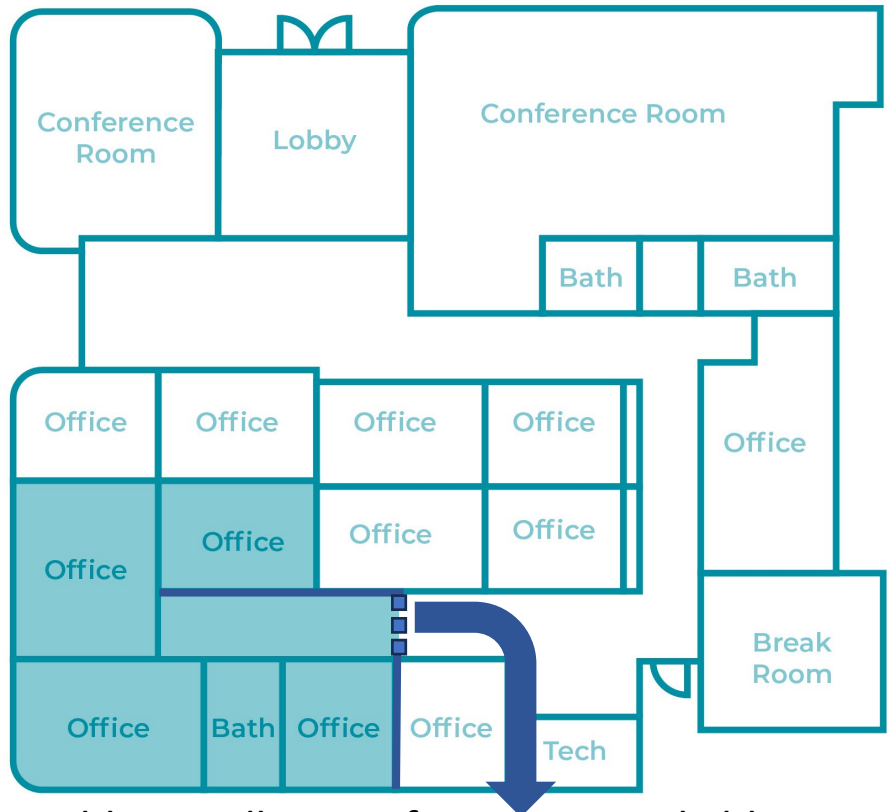
103 E 29<sup>th</sup> Street | Vancouver, WA 98663



900 Washington St, Suite 850, Vancouver, WA  
360.750.5595 | www.fg-cre.com



## Shared Office Space



## Possible Installation of Separate Lockable Access

This statement with the information it contains is given with the understanding that all the negotiations relating to the purchase, rental or leasing of the property described above shall be conducted through this office. The above information, while not guaranteed, has been secured from sources we believe to be reliable.