



LOCATED IN PORT OF JEFFERSONVILLE



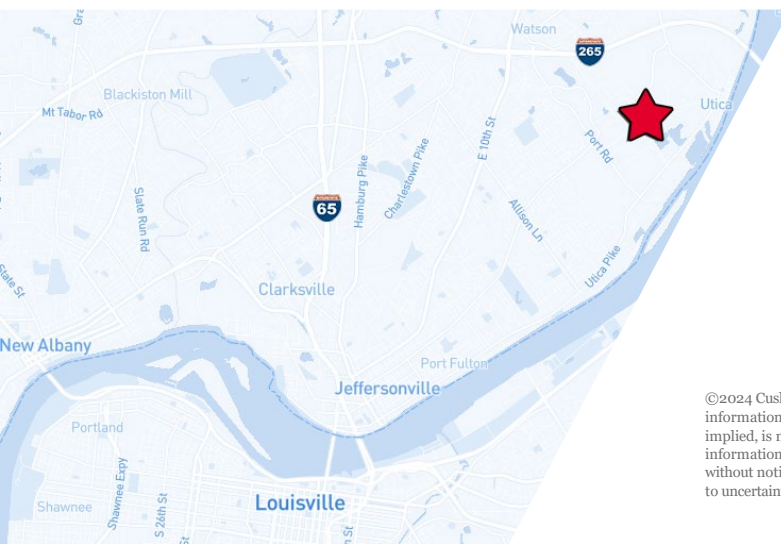
# 5171 MARITIME ROAD

Jeffersonville, IN 47130

**158,440 SF  
FOR LEASE**

## PROPERTY HIGHLIGHTS

- 158,440 sf available
- Up to 13,973 sf of office
- 24' clear height
- Six (6) dock doors
  - Four (4) fully-equipped
- Two (2) 10' x 14' drive-in doors
- One (1) 18' x 18' drive-in door



### BLAKE SCINTA, CCIM

Senior Associate  
502 589 5150 ext. 230  
bscinta@commercialkentucky.com

### GREG CHARMOLI

Senior Director  
502 589 5150 ext. 238  
gcharmoli@commercialkentucky.com

333 E. Main Street, Suite 510 | Louisville, KY 40202  
+1 502 589 5150  
www.CommercialKentucky.com

©2024 Cushman & Wakefield. All rights reserved. The information contained in this communication is strictly confidential. This information has been obtained from sources believed to be reliable but has not been verified. No warranty or representation, express or implied, is made as to the condition of the property (or properties) referenced herein or as to the accuracy or completeness of the information contained herein, and same is submitted subject to errors, omissions, change of price, rental or other conditions, withdrawal without notice, and to any special listing conditions imposed by the property owner(s). Any projections, opinions or estimates are subject to uncertainty and do not signify current or future property performance.



# 5171 MARITIME ROAD

Jeffersonville, IN 47130

**158,440 SF FOR LEASE**



## PROPERTY INFORMATION

- LED lighting
- 480 volt; 4,000 amps; 3-phase
- Compressed air lines throughout
- Three (3) 3-ton cranes (70')
- Two (2) LVS ventilation fans
- 7" – 10" concrete floor
- 90+ parking spaces
- 30 acres
- Secured/gates/fenced access
- I-2 zoning
- Convenient access to I-265, Lewis & Clark Bridge, and heavy haul road from Port to River Ridge



### BLAKE SCINTA, CCIM

Senior Associate  
502 589 5150 ext. 230  
bscinta@commercialkentucky.com

### GREG CHARMOLI

Senior Director  
502 589 5150 ext. 238  
gcharmoli@commercialkentucky.com

333 E. Main Street, Suite 510  
Louisville, KY 40202  
+1 502 589 5150  
www.CommercialKentucky.com



# 5171 MARITIME ROAD

Jeffersonville, IN 47130

**158,440 SF FOR LEASE**



## AERIAL IMAGE SE CORNER



**BLAKE SCINTA, CCIM**  
Senior Associate  
502 589 5150 ext. 230  
bscinta@commercialkentucky.com

**GREG CHARMOLI**  
Senior Director  
502 589 5150 ext. 238  
gcharmoli@commercialkentucky.com

333 E. Main Street, Suite 510  
Louisville, KY 40202  
+1 502 589 5150  
www.CommercialKentucky.com





**CUSHMAN &  
WAKEFIELD**

Commercial Kentucky

# 5171 MARITIME ROAD

Jeffersonville, IN 47130

**158,440 SF FOR LEASE**



## AERIAL IMAGE



### BLAKE SCINTA, CCIM

Senior Associate

502 589 5150 ext. 230

[bscinta@commercialkentucky.com](mailto:bscinta@commercialkentucky.com)

### GREG CHARMOLI

Senior Director

502 589 5150 ext. 238

[gcharmoli@commercialkentucky.com](mailto:gcharmoli@commercialkentucky.com)

333 E. Main Street, Suite 510

Louisville, KY 40202

+1 502 589 5150

[www.CommercialKentucky.com](http://www.CommercialKentucky.com)

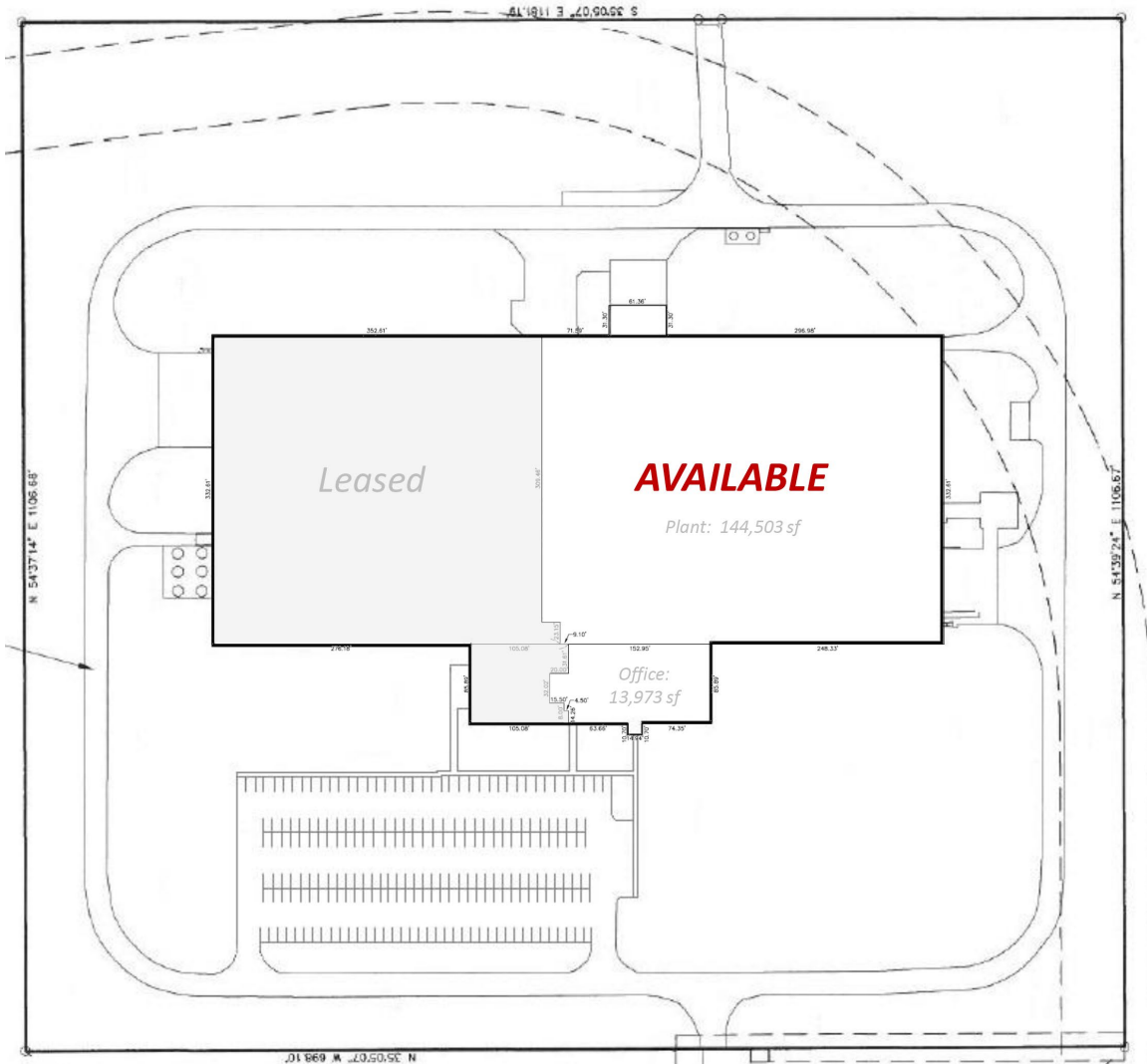
# 5171 MARITIME ROAD

Jeffersonville, IN 47130

**158,440 SF FOR LEASE**



## SITE PLAN



**BLAKE SCINTA, CCIM**  
Senior Associate  
502 589 5150 ext. 230  
bscinta@commercialkentucky.com

**GREG CHARMOLI**  
Senior Director  
502 589 5150 ext. 238  
gcharmoli@commercialkentucky.com

333 E. Main Street, Suite 510  
Louisville, KY 40202  
+1 502 589 5150  
www.CommercialKentucky.com



**CUSHMAN & WAKEFIELD**

Commercial Kentucky

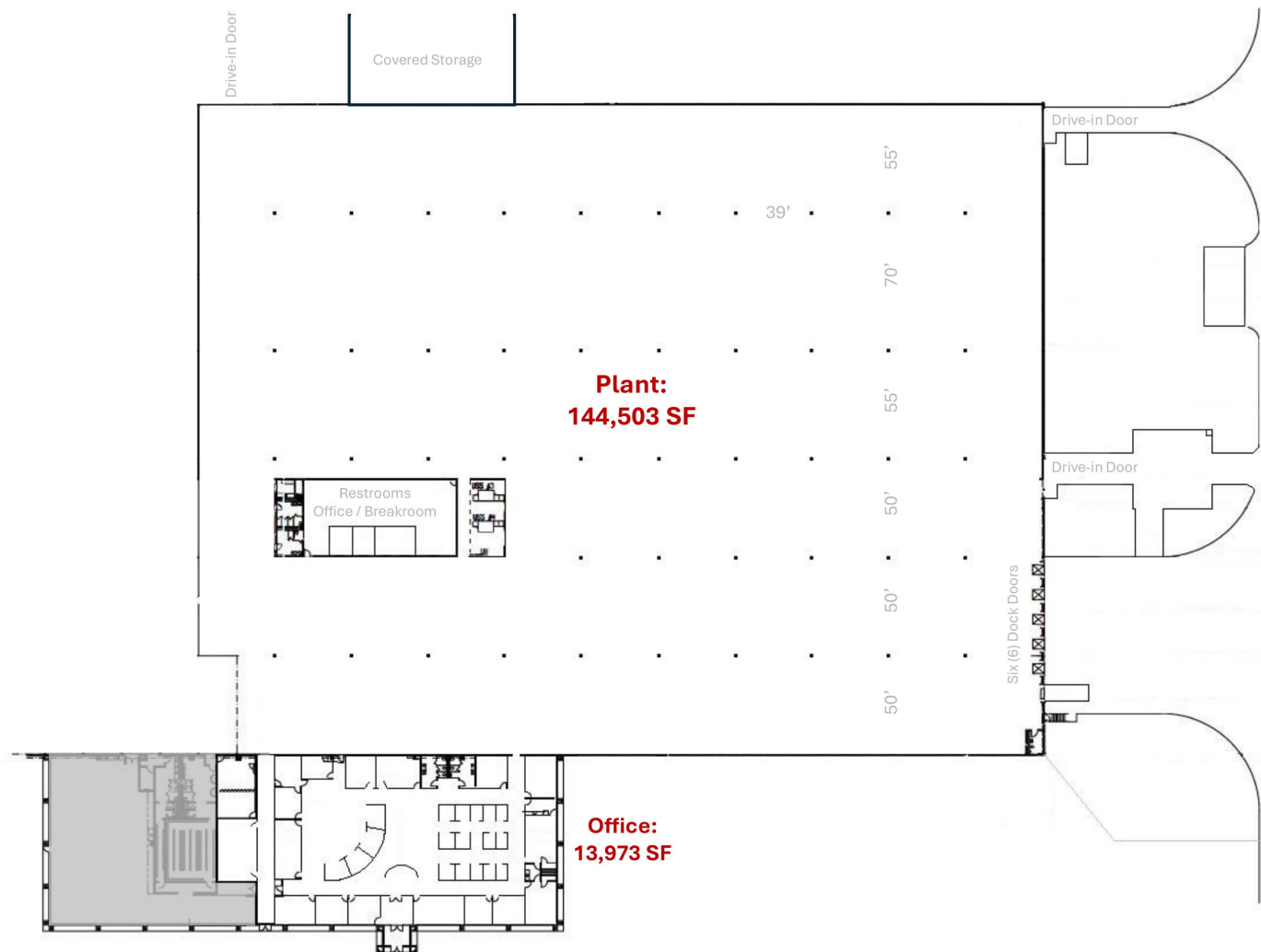
# 5171 MARITIME ROAD

Jeffersonville, IN 47130

**158,440 SF FOR LEASE**



## PLANT LAYOUT



### BLAKE SCINTA, CCIM

Senior Associate  
502 589 5150 ext. 230  
bscinta@commercialkentucky.com

### GREG CHARMOLI

Senior Director  
502 589 5150 ext. 238  
gcharmoli@commercialkentucky.com

333 E. Main Street, Suite 510  
Louisville, KY 40202  
+1 502 589 5150  
www.CommercialKentucky.com





**CUSHMAN & WAKEFIELD**

Commercial Kentucky

# 5171 MARITIME ROAD

Jeffersonville, IN 47130

**158,440 SF FOR LEASE**



## OFFICE LAYOUT



**BLAKE SCINTA, CCIM**

Senior Associate  
502 589 5150 ext. 230  
bscinta@commercialkentucky.com

**GREG CHARMOLI**

Senior Director  
502 589 5150 ext. 238  
gcharmoli@commercialkentucky.com

333 E. Main Street, Suite 510  
Louisville, KY 40202  
+1 502 589 5150  
www.CommercialKentucky.com

©2024 Cushman & Wakefield. All rights reserved. The information contained in this communication is strictly confidential. This information has been obtained from sources believed to be reliable but has not been verified. No warranty or representation, express or implied, is made as to the condition of the property (or properties) referenced herein or as to the accuracy or completeness of the information contained herein, and same is submitted subject to errors, omissions, change of price, rental or other conditions, withdrawal without notice, and to any special listing conditions imposed by the property owner(s). Any projections, opinions or estimates are subject to uncertainty and do not signify current or future property performance.