

1181 North Milford Rd

Milford, MI

Suite 100: 4,653 SF



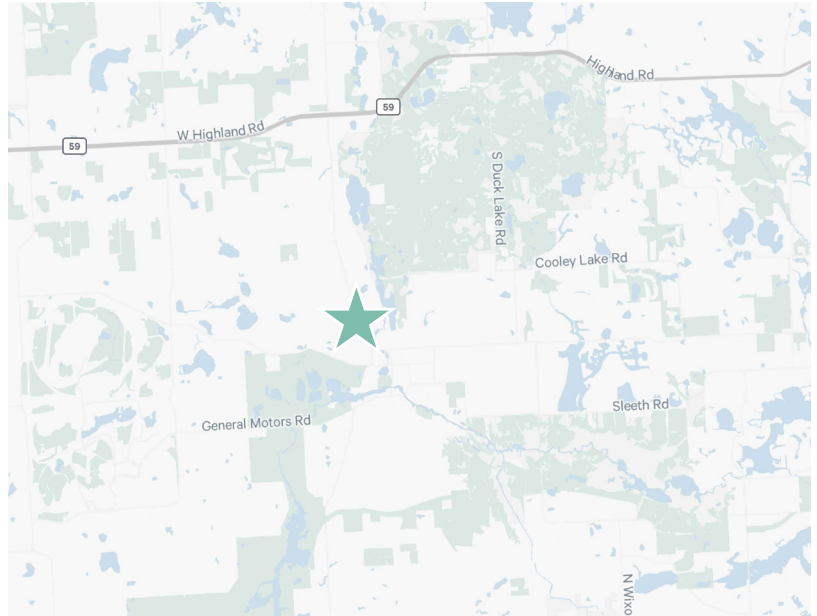
Property Overview

Oakland

County

4,653

Square Footage

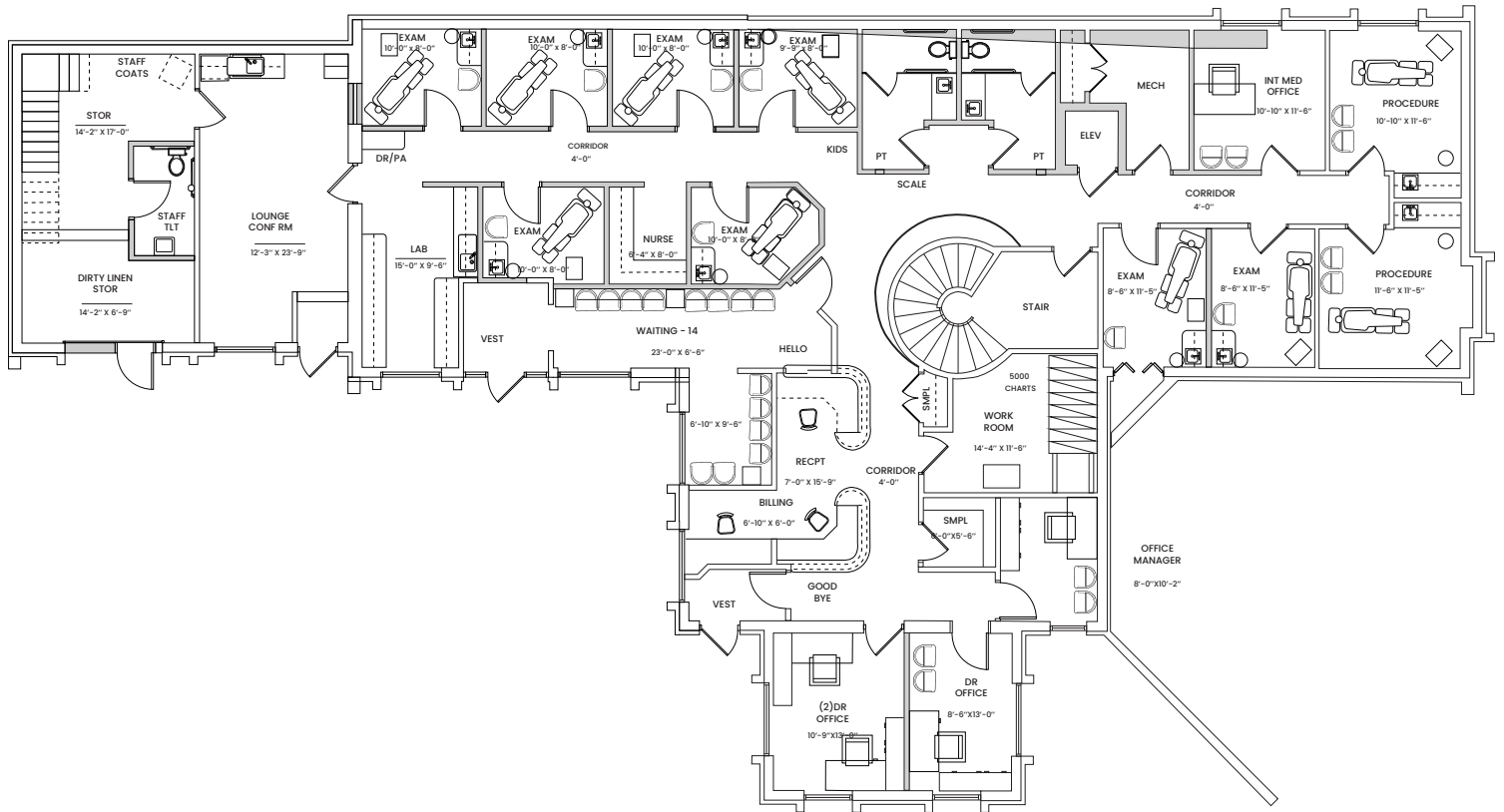


Negotiable

Sublease Rate

Sublease Rate:	Negotiable	Suites Available:	Suite 100
Total Available:	4,653 SF	Parking	Ample Parking
Lease Expiration:	3/31/2028	Year Built:	1990
Comments:	<ul style="list-style-type: none">• 8 Exam Rooms• 4 Offices• 2 Procedure Rooms• Furniture Available		

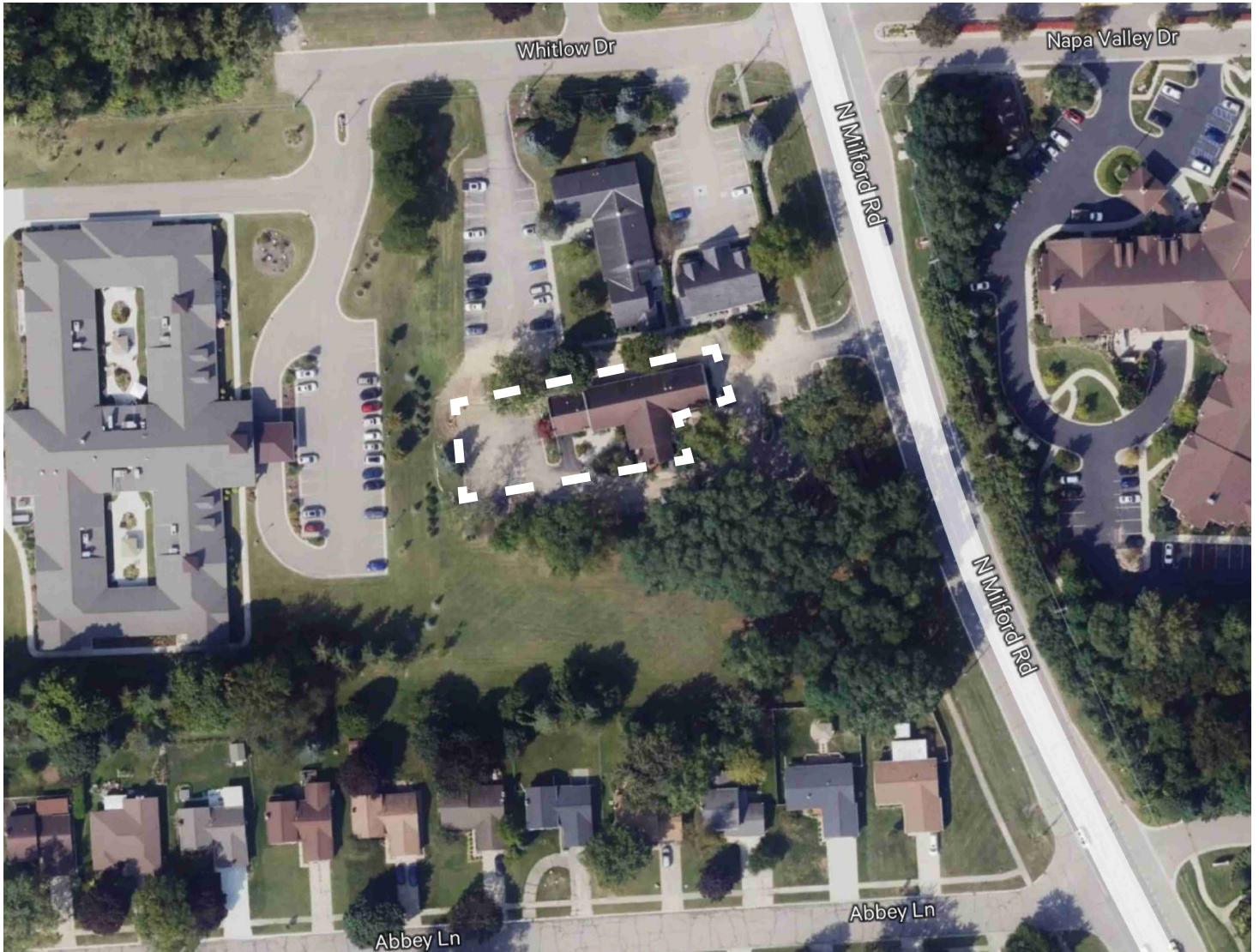
Floor Plan



1181 North Milford Rd.
Milford, MI 48381

For Sublease

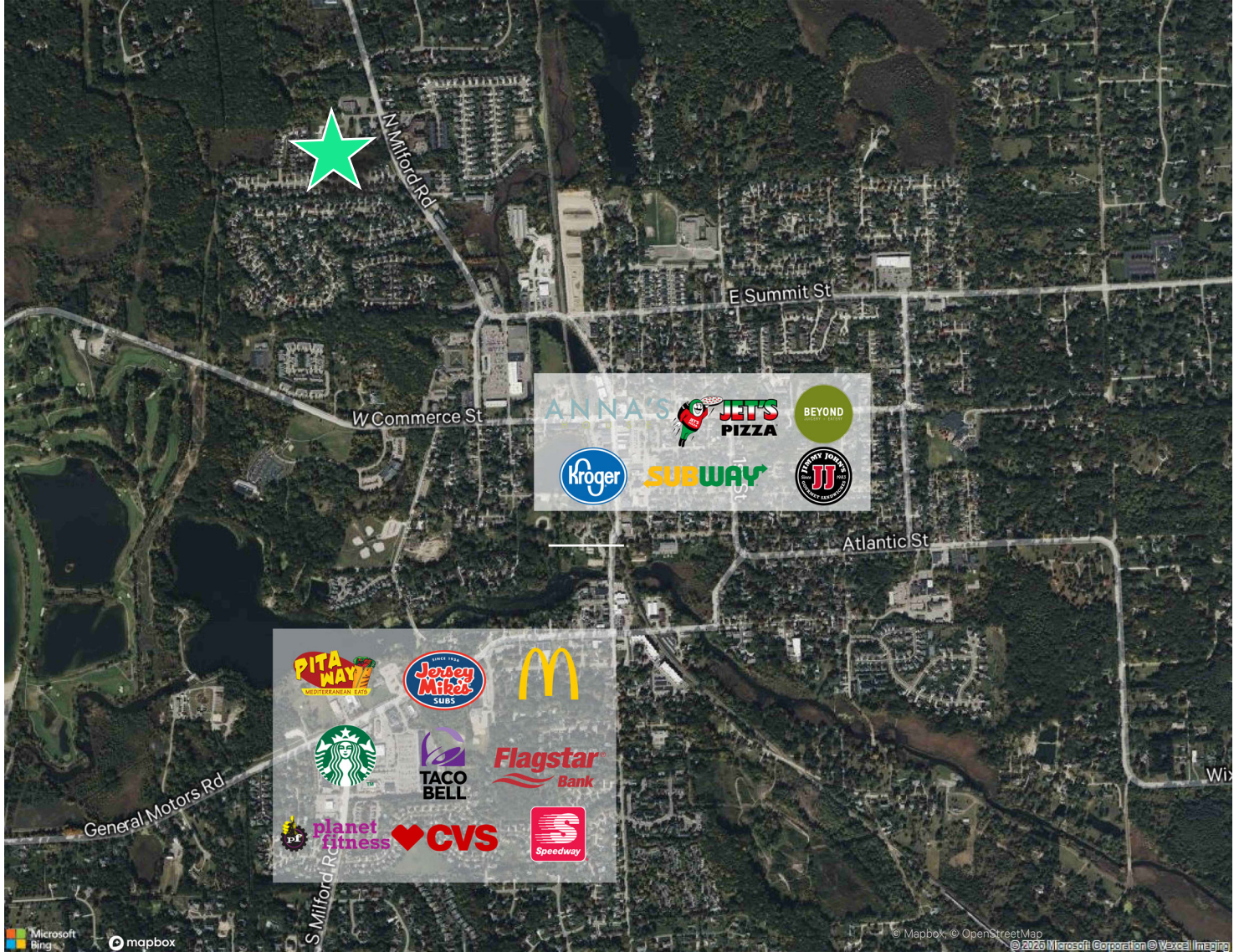
Aerial



Photos



Area Amenities



Contact Us

Jamie Dingeman

Executive Vice President

+1 248 351 2003

jamie.dingeman@cbre.com

© 2026 CBRE, Inc. All rights reserved. This information has been obtained from sources believed reliable but has not been verified for accuracy or completeness. CBRE, Inc. makes no guarantee, representation or warranty and accepts no responsibility or liability as to the accuracy, completeness, or reliability of the information contained herein. You should conduct a careful, independent investigation of the property and verify all information. Any reliance on this information is solely at your own risk.