



GREENFIELD BUSINESS PARK | FLEX SPACE FOR LEASE

6000 NW 2ND ST., SUITE 750, OKLAHOMA CITY, OK

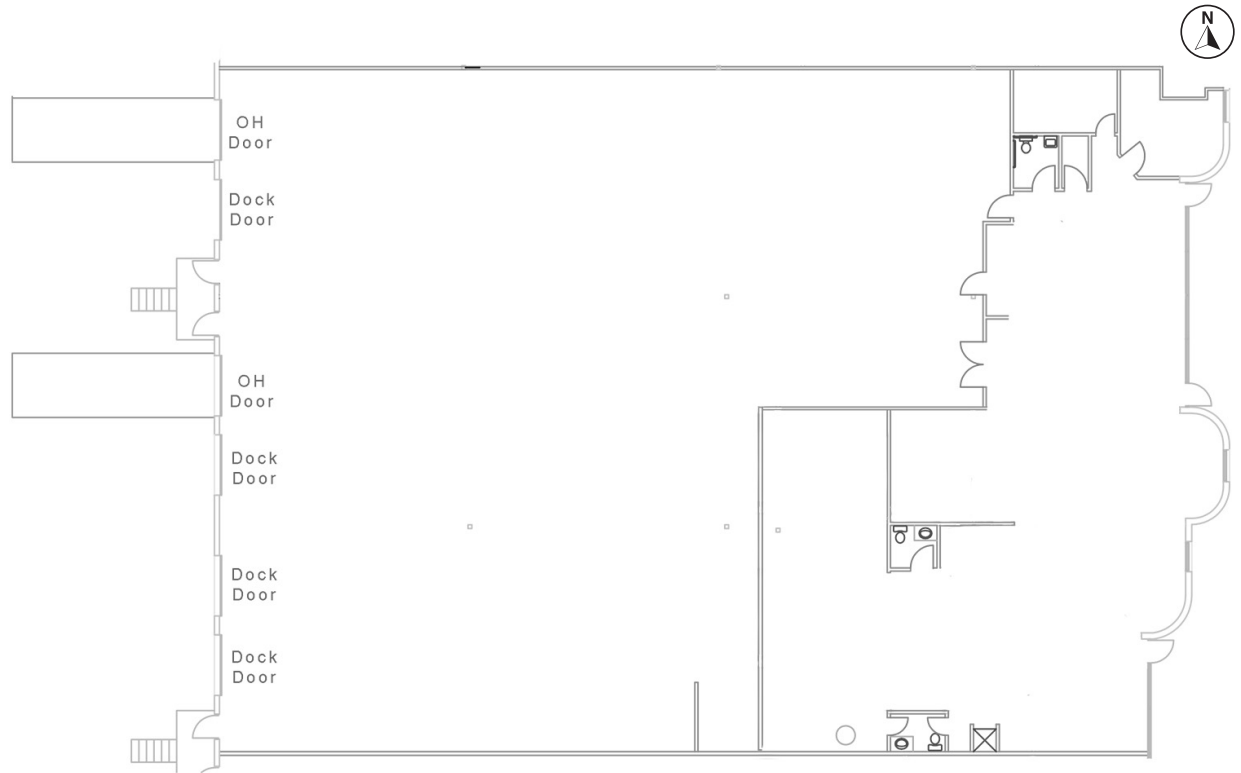
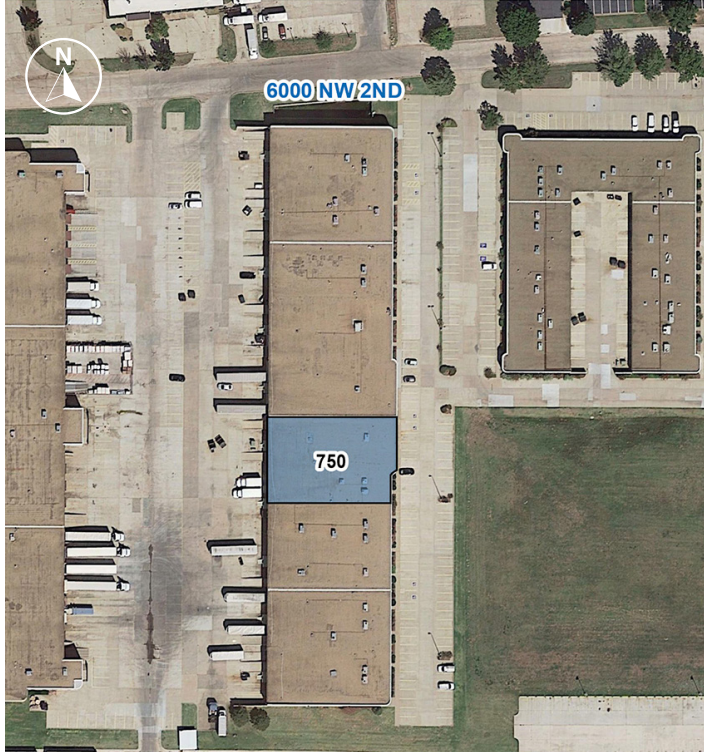
KARLEY HARPER, CCIM
kharper@newmarkrp.com
C: 405.371.3498

KRIS DAVIS, SIOR
kgdavis@newmarkrp.com
C: 405.202.9525

BRETT PRICE, CCIM, SIOR
bprice@newmarkrp.com
C: 405.613.8380

NEWMARK
ROBINSON PARK

6000 NW 2ND, SUITE 750 | FLEX SPACE



DETAILS

Available SF	12,041 SF
Lease Rate	Contact Broker
Building Size	79,071 SF
Market	Oklahoma City
Cross Streets	NW 2nd & N MacArthur

HIGHLIGHTS

2,826 SF office space
9,215 SF warehouse space
2 overhead doors
4 dock high doors
Available 6/1/2026

PROPERTY OVERVIEW

Greenfield Business Park is located 1/2 mile north of I-40 and two miles west of I-44, which allows for convenient and quick access to Oklahoma's interstate system. The property is located in a densely populated commercial area with a multitude of restaurants and national retailers.