

KECHI ARTS AND BUSINESS DISTRICT RETAIL




137 N. Oliver, Kechi, KS 67067



LEASE RATE: \$1,200/MO (G)
SF AVAILABLE: 1,200 SF
LOT SIZE: 2,400 SF
ZONING: C-1

PROPERTY HIGHLIGHTS

- Charming, well-maintained space suitable for a variety of retail or office uses.
- Ample doorside parking.
- Open floor plan.
- One bathroom.
- Central HVAC.

| DEMOGRAPHICS | 1 MILE | 3 MILES | 5 MILES |
|---|-----------|-----------|----------|
|  POPULATION | 1,395 | 21,622 | 58,136 |
|  AVG. HH INCOME | \$112,333 | \$105,701 | \$92,994 |
|  MEDIAN AGE | 44 | 39 | 39 |



Offered exclusively by: **Ben Gartner, CCIM** | 316-292-3967 | bgartner@weigand.com

KECHI ARTS AND BUSINESS DISTRICT RETAIL

137 N. Oliver, Kechi, KS 67067

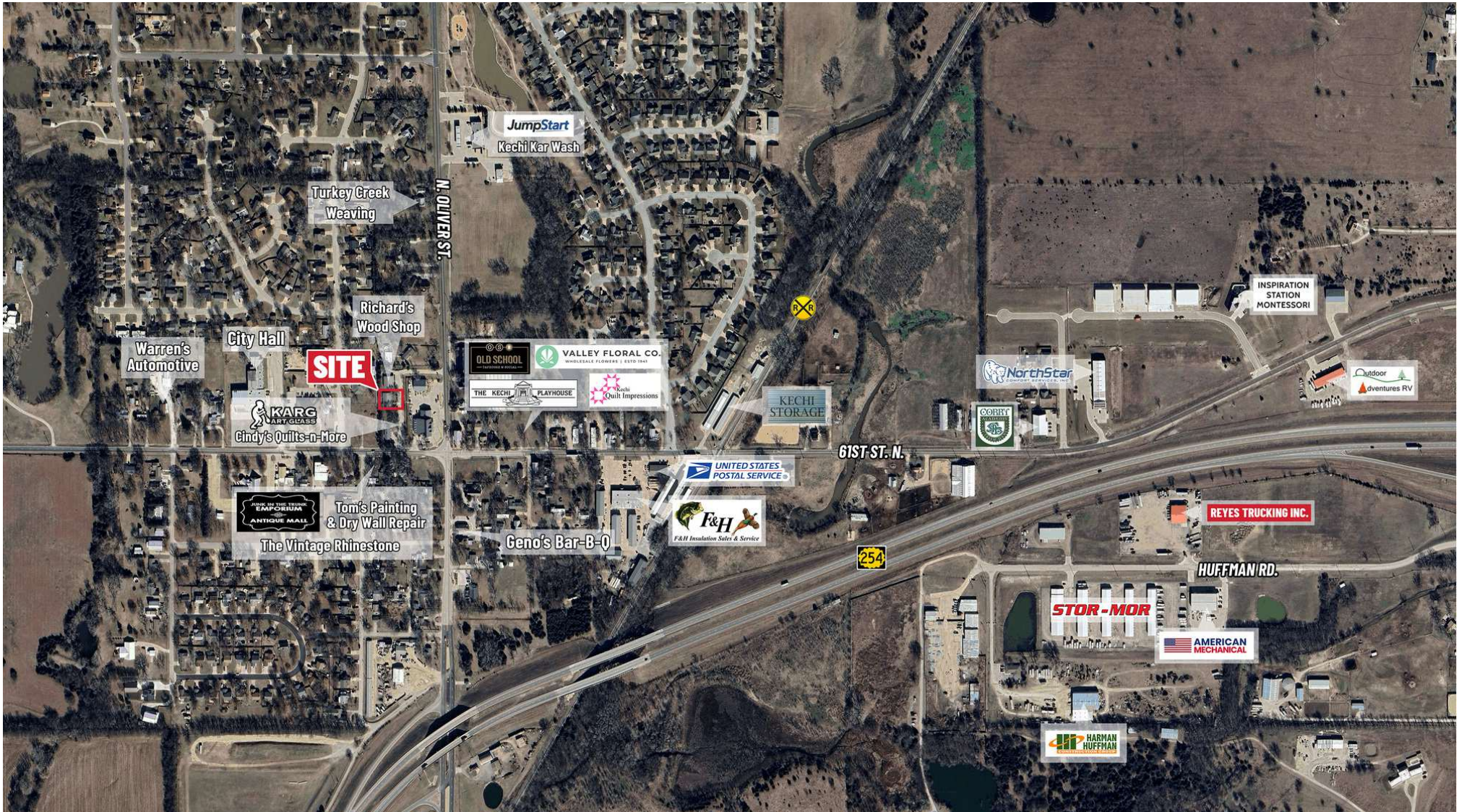


Offered exclusively by: **Ben Gartner, CCIM** | 316-292-3967 | bgartner@weigand.com

J.P. Weigand & Sons, Inc. Commercial | 150 N. Market Street, Wichita, KS 67202 | WeigandCommercial.com

KECHI ARTS AND BUSINESS DISTRICT RETAIL

137 N. Oliver, Kechi, KS 67067



Offered exclusively by: Ben Gartner, CCIM | 316-292-3967 | bgartner@weigand.com

J.P. Weigand & Sons, Inc. Commercial | 150 N. Market Street, Wichita, KS 67202 | WeigandCommercial.com