

Office | For Lease

CBRE

1800 Eller Drive

1800 Eller Drive
Fort Lauderdale, FL 33316
www.cbre.com/EllerDrive

Convenient East Fort Lauderdale Location



1800 Eller Drive
1800 Eller Drive | Fort Lauderdale, FL 33316

For Lease



Remarkable location at Port Everglades

100,000-square-foot, 6-story office tower positioned between Port Everglades and the Ft. Lauderdale-Hollywood International Airport. Enjoy nearby retail and dining options and onsite amenities including: Loca Mocha café serving breakfast and lunch, abundant parking, full-time professional building team and an after-hours card access system. I-595 provides direct, easy access to a variety of places, including a 5-minute drive to I-95.

Availability

Suite #	Size
Suite 210	1,289 SF
Suite 402	3,540 SF
Suite 501	8,280 SF

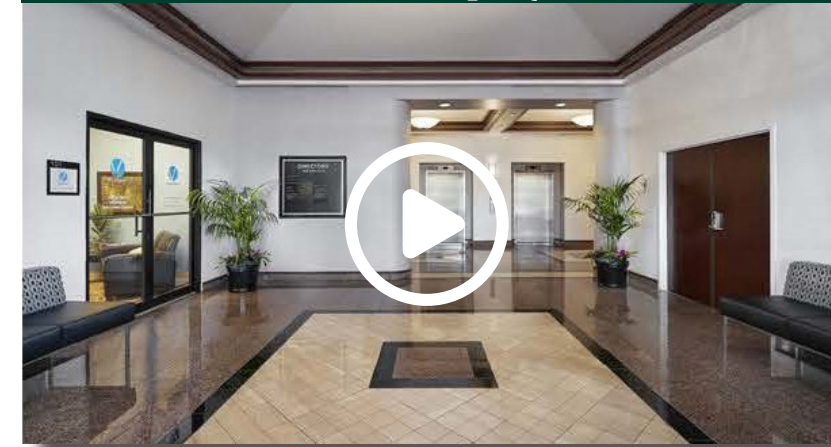
1800 Eller Drive
1800 Eller Drive | Fort Lauderdale, FL 33316

For Lease

Property Profile

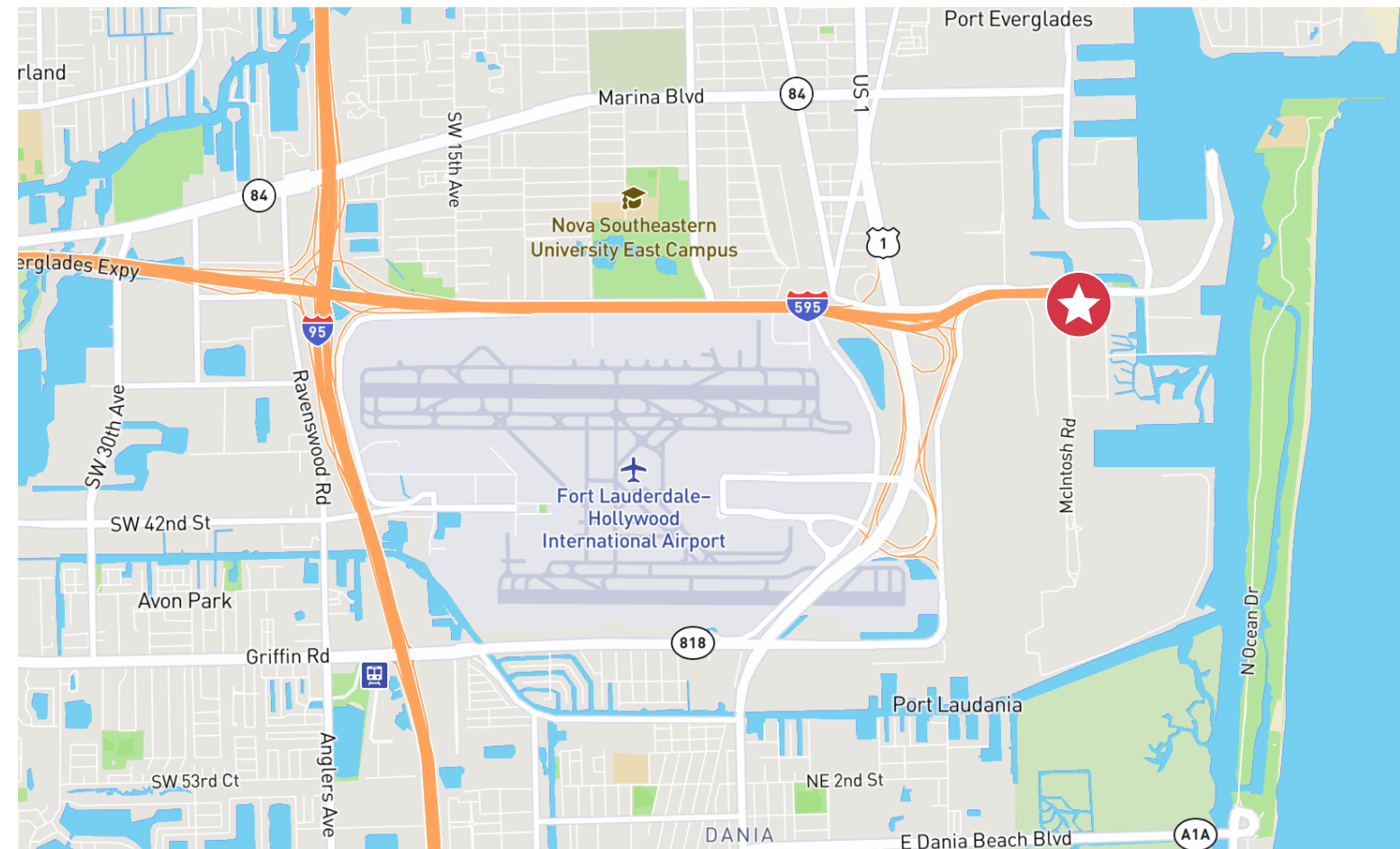
TOTAL BUILDING SIZE: 99,982 SF
YEAR BUILT: 1983
RENOVATED: 2007
RENTAL RATE: \$32.00/SF | Full Service Gross
PARKING: 4.80/1,000 ratio

[Click to View Property Video](#)



Building Highlights

- Excellent location East of I-595 and Port Everglades
- Direct access to Fort Lauderdale/ Hollywood International Airport
- Mins to all other major roadways
- Full service cafe on site
- High speed fiber ready internet
- Abundance of Free Parking



1800 Eller Drive

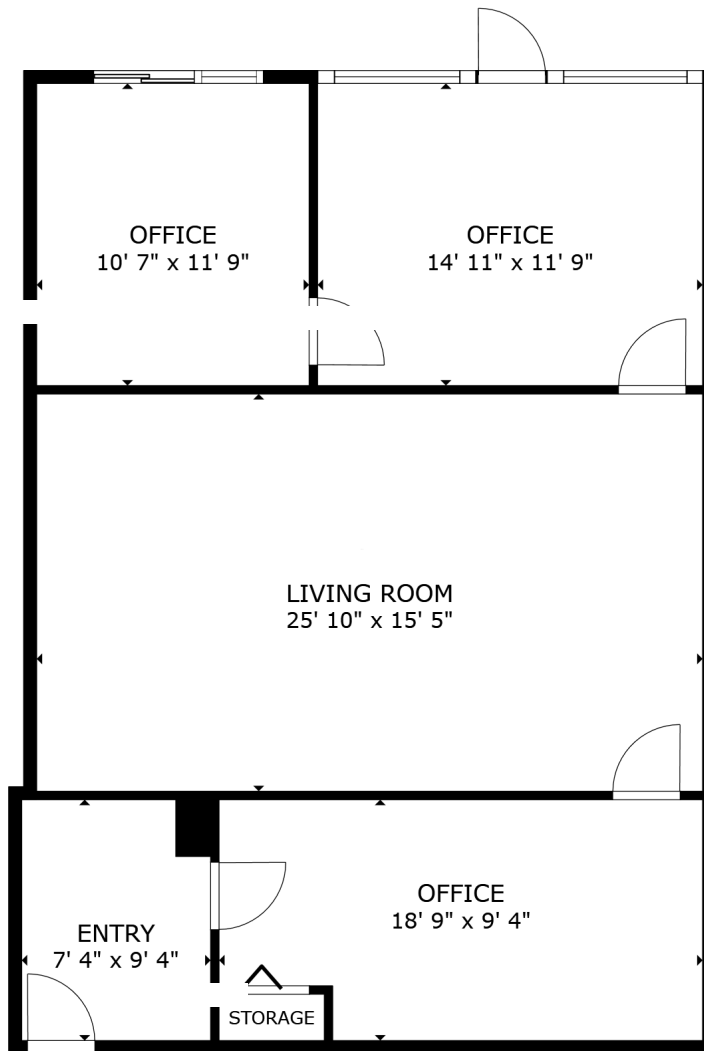
1800 Eller Drive | Fort Lauderdale, FL 33316

For Lease

Floor Plan | Suite 210

± 1,289 SF

 [CLICK TO VIEW 3D OFFICE TOUR](#)



Contact

Christopher Dubberly

First Vice President

+1 954 331 1777

christopher.dubberly@cbre.com

Jacob Sanchez

Associate

+1 305 428 5006

jacob.sanchez@cbre.com

www.cbre.com/EllerDrive

CBRE

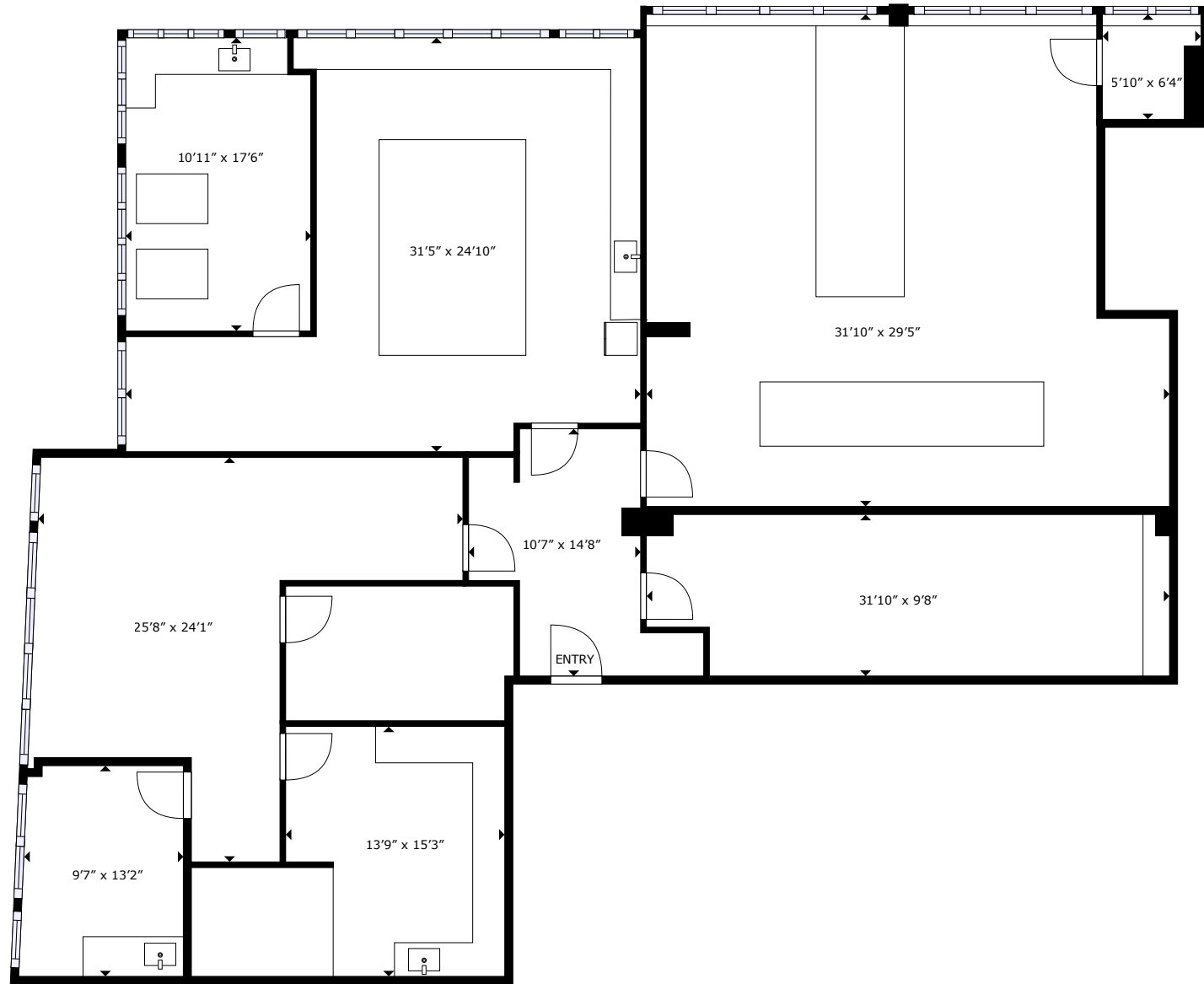
1800 Eller Drive
1800 Eller Drive | Fort Lauderdale, FL 33316

For Lease

Floor Plan | Suite 402

± 3,540 SF

CLICK TO VIEW
3D OFFICE TOUR



Contact

Christopher Dubberly
First Vice President
+1 954 331 1777
christopher.dubberly@cbre.com

Jacob Sanchez
Associate
+1 305 428 5006
jacob.sanchez@cbre.com

www.cbre.com/EllerDrive

CBRE

1800 Eller Drive
1800 Eller Drive | Fort Lauderdale, FL 33316

For Lease

Suite 402 | 3,540 SF



Contact

Christopher Dubberly
First Vice President
+1 954 331 1777
christopher.dubberly@cbre.com

Jacob Sanchez
Associate
+1 305 428 5006
jacob.sanchez@cbre.com

www.cbre.com/EllerDrive

CBRE

1800 Eller Drive
1800 Eller Drive | Fort Lauderdale, FL 33316

For Lease

Floor Plan | Suite 501

± 8,280 SF

CLICK TO VIEW
3D OFFICE TOUR



1800 Eller Drive
1800 Eller Drive | Fort Lauderdale, FL 33316

For Lease

Suite 501 | 8,280 SF



Contact

Christopher Dubberly
First Vice President
+1 954 331 1777
christopher.dubberly@cbre.com

Jacob Sanchez
Associate
+1 305 428 5006
jacob.sanchez@cbre.com

www.cbre.com/EllerDrive

CBRE

Contact

Christopher Dubberly
First Vice President
+1 954 331 1777
christopher.dubberly@cbre.com

Jacob Sanchez
Associate
+1 305 428 5006
jacob.sanchez@cbre.com

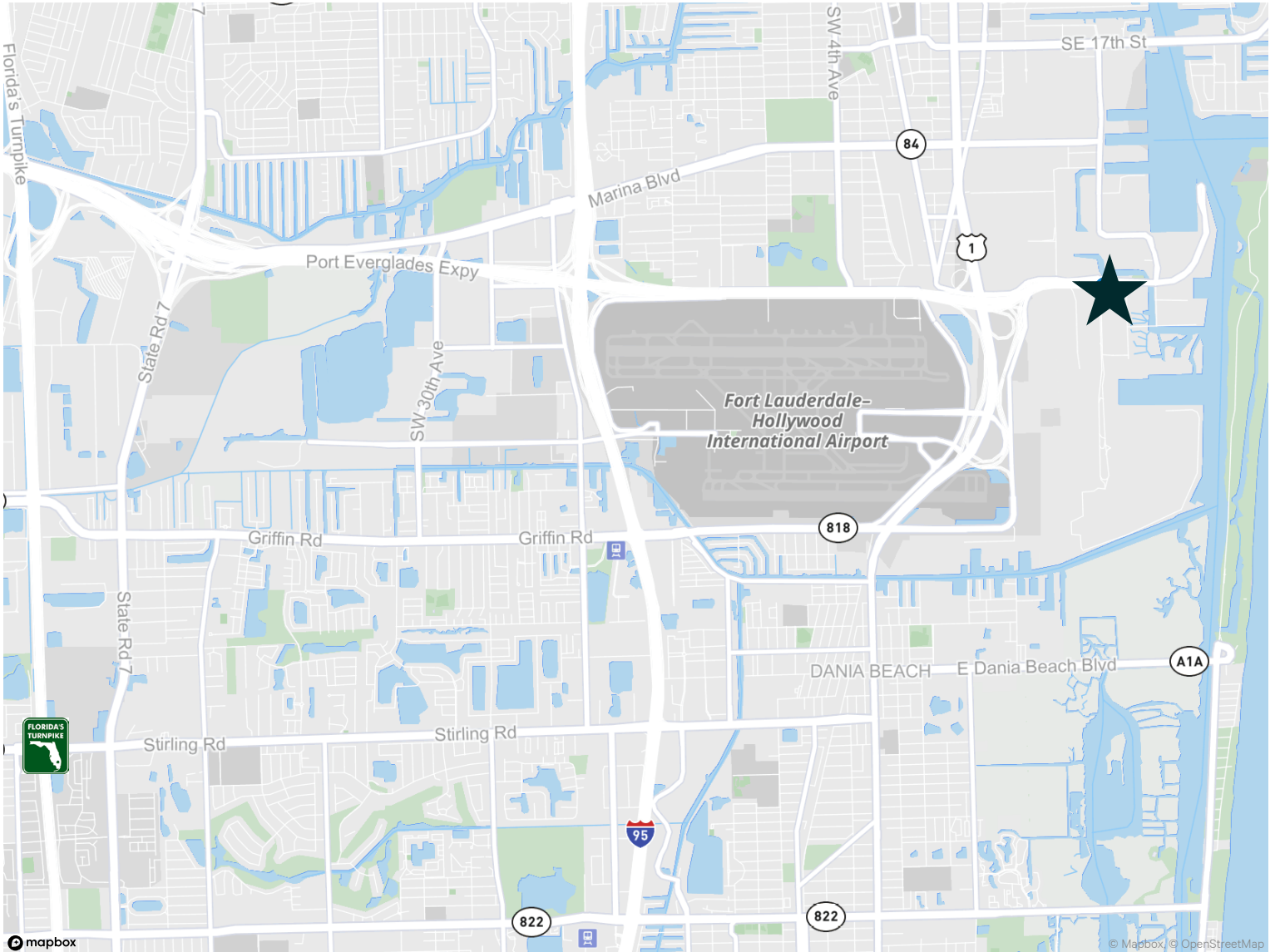
www.cbre.com/EllerDrive

CBRE

1800 Eller Drive

1800 Eller Drive | Fort Lauderdale, FL 33316

For Lease



Contact

Christopher Dubberly

First Vice President

+1 954 331 1777

christopher.dubberly@cbre.com

Jacob Sanchez

Associate

+1 305 428 5006

jacob.sanchez@cbre.com

© 2024 CBRE, Inc. All rights reserved. This information has been obtained from sources believed reliable, but has not been verified for accuracy or completeness. You should conduct a careful, independent investigation of the property and verify all information. Any reliance on this information is solely at your own risk. CBRE and the CBRE logo are service marks of CBRE, Inc. All other marks displayed on this document are the property of their respective owners, and the use of such logos does not imply any affiliation with or endorsement of CBRE. Photos herein are the property of their respective owners. Use of these images without the express written consent of the owner is prohibited.

www.cbre.com/EllerDrive

CBRE