



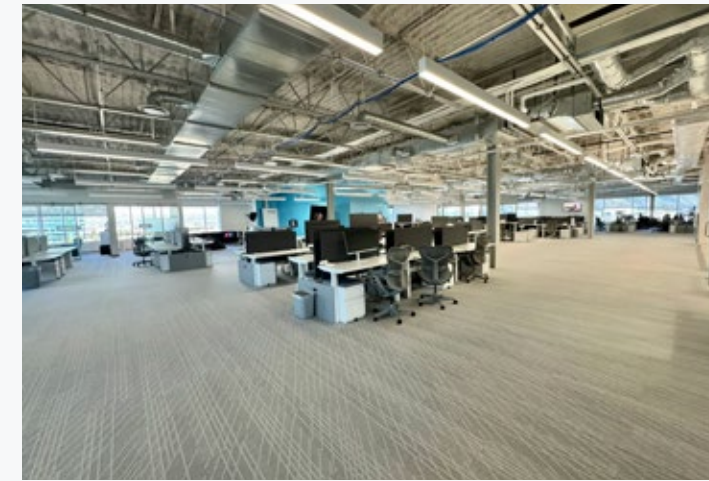
# Mountain Tech II

2570 WEST 600 NORTH | LINDON, UTAH 84042

**FOR LEASE**



# Mountain Tech II



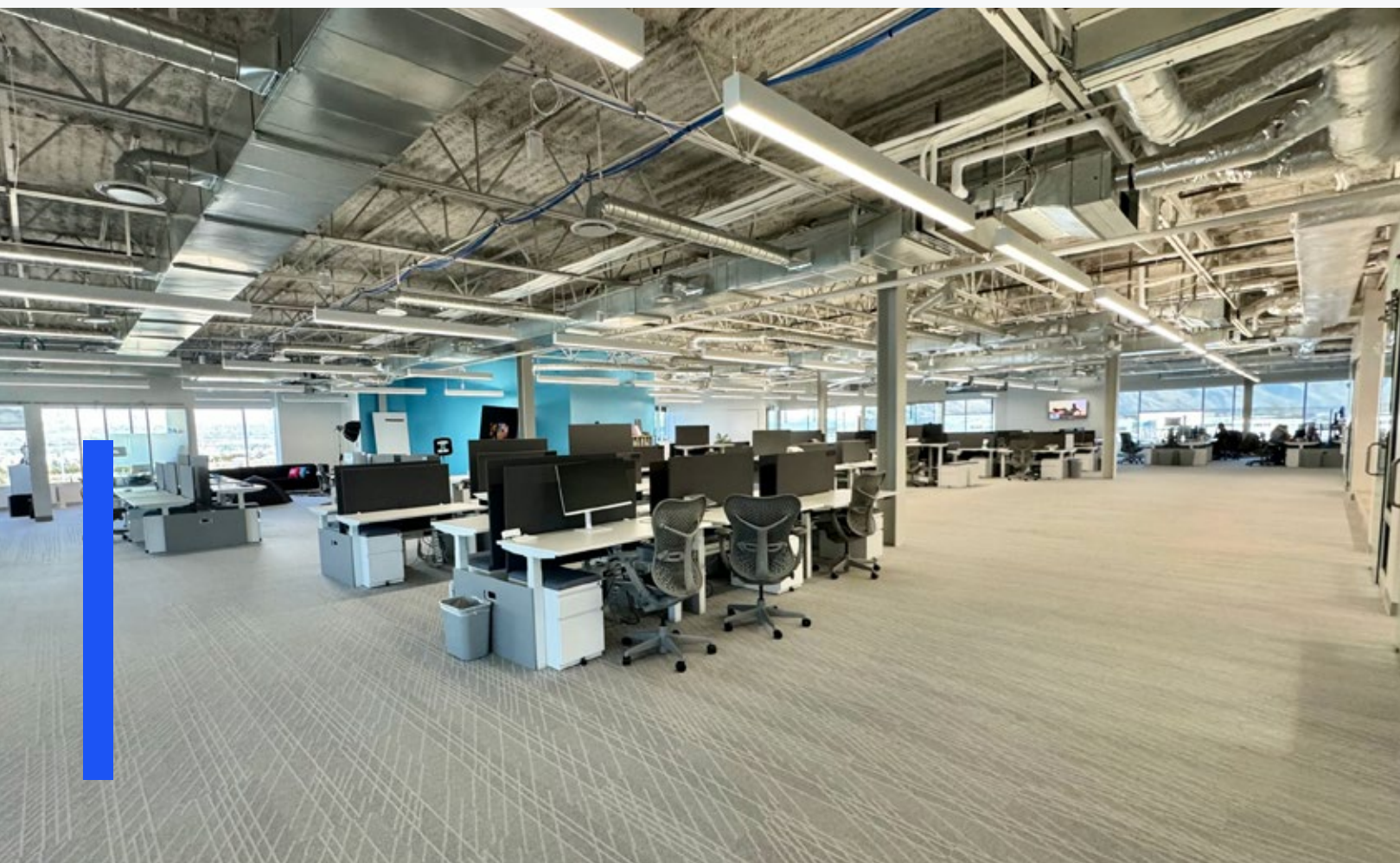
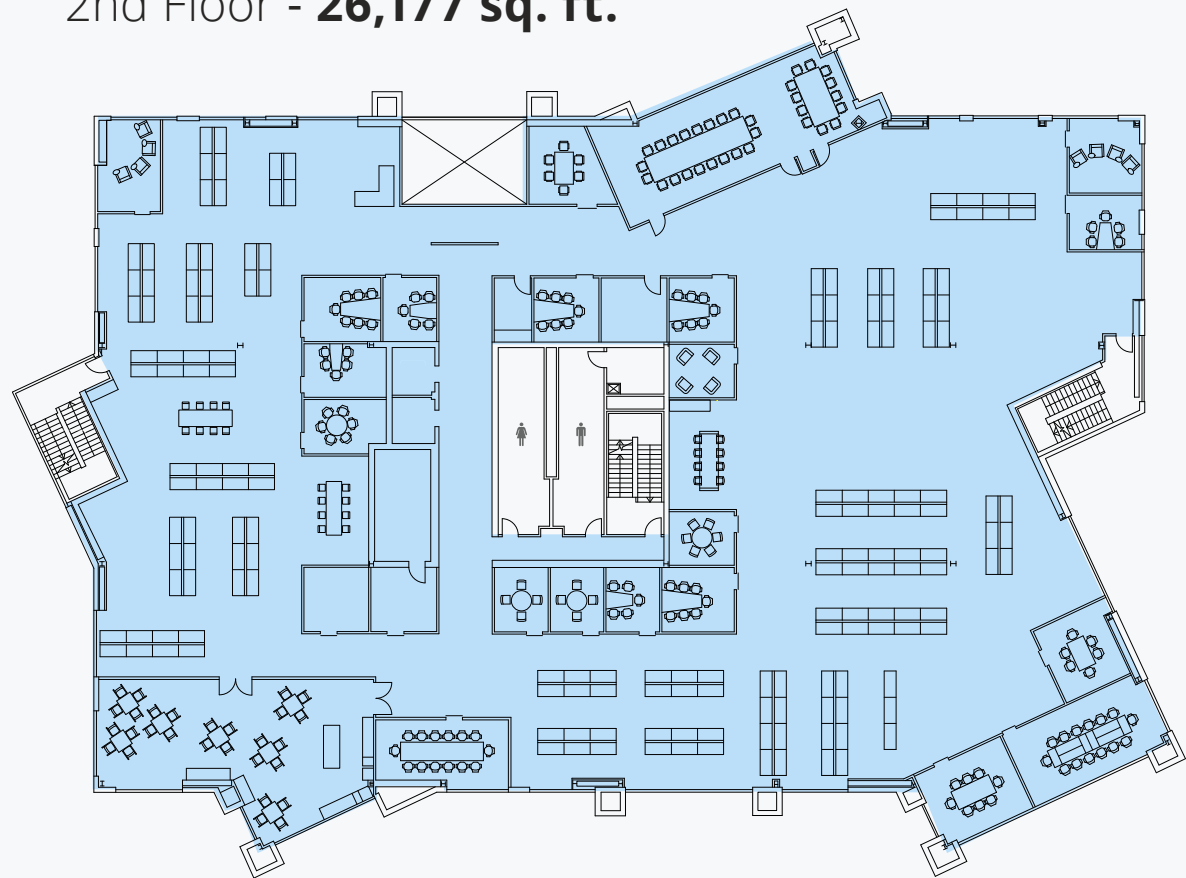
## Property Highlights:

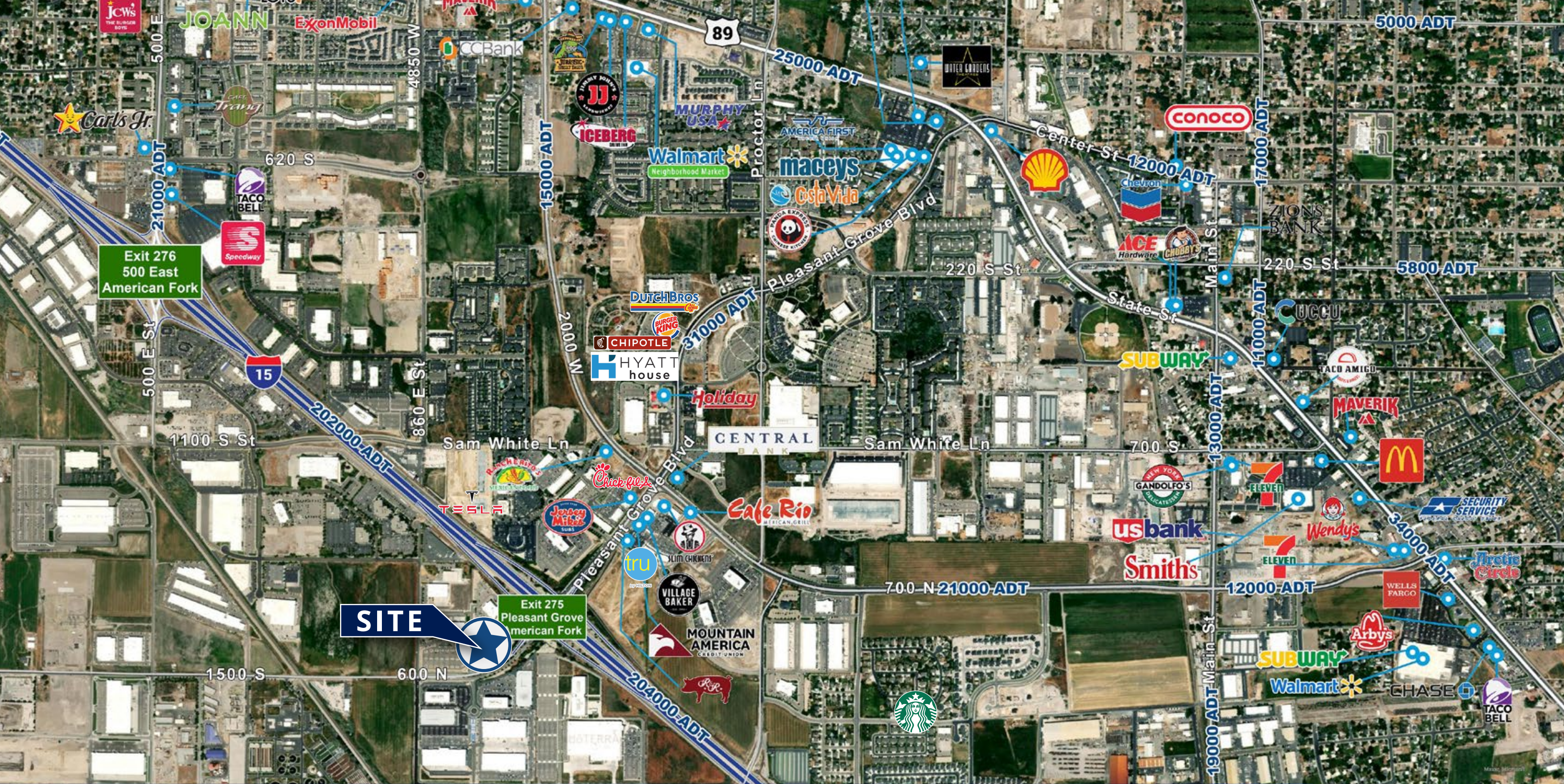
- . Space Available from: 5,000 - 26,177 Square Feet
- . Lease Rate: \$24.85 Per Sq. Ft. / Full Service
- . Building Crown Signage Available
- . Unobstructed Panoramic Views
- . Fully Furnished | Plug & Play Ready
- . Immediate Freeway Access off I-15 (Exit 275)
- . New Fitness Facility and Building Lounge
- . Large Conference/Training Rooms
- . Parking Ratio 6/1,000
- . Offering immediate freeway access and frontage on I-15, Ideally positioned space in the heart of Silicon Slopes.

**THIS IS ARGUABLY THE MOST IMPRESSIVE COMPETITIVELY PRICED FULLY FURNISHED MOVE-IN READY SPACE IN THE MARKET.**



2nd Floor - 26,177 sq. ft.





# Amenities Map



# Mountain Tech II

**Brandon Fugal**

+1 801 947 8300

[brandon.fugal@colliers.com](mailto:brandon.fugal@colliers.com)



6440 S. Millrock Dr., Suite 500

Salt Lake City, UT 84121

Main: +1 801 947 8300

[colliers.com](http://colliers.com)

This document has been prepared by Colliers International for advertising and general information only. Colliers International makes no guarantees, representations or warranties of any kind, expressed or implied, regarding the information including, but not limited to, warranties of content, accuracy and reliability. Any interested party should undertake their own inquiries as to the accuracy of the information. Colliers International excludes unequivocally all inferred or implied terms, conditions and warranties arising out of this document and excludes all liability for loss and damages arising there from. This publication is the copyrighted property of Colliers International and/or its licensor(s). ©2025. All rights reserved.