



VONNIE JANE

HARMONY HEIGHTS - NATURAL PACKAGE

**ALL FINISHES SUBJECT TO CHANGE*



A



C



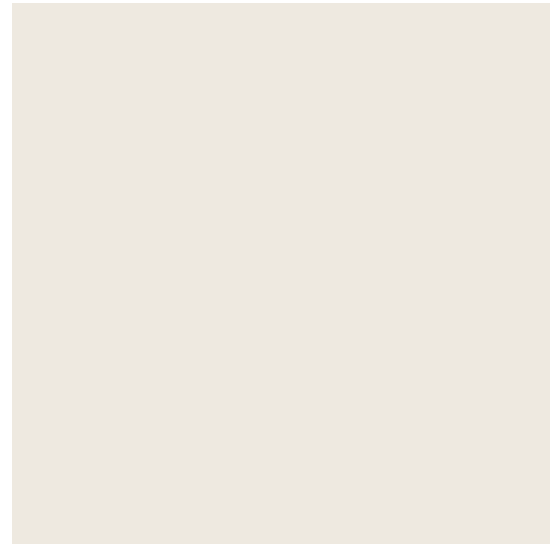
D



B



E



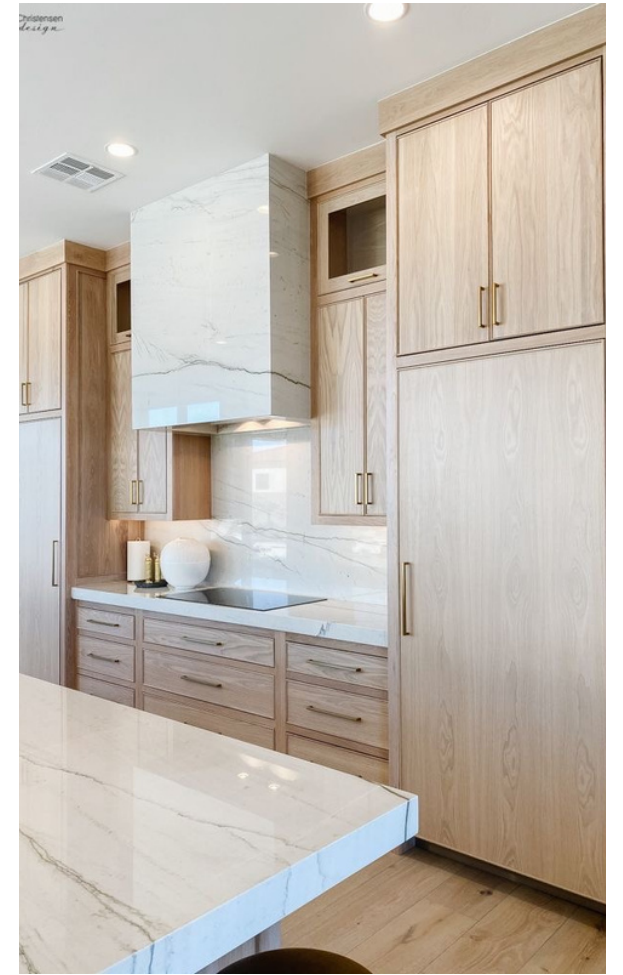
F



G



H



I



NATURAL KITCHEN

A - STONE WASH SHAKER CABINETS

B - MANTAUK FOG 2X8 BACKSPLASH

C - BRUSHED GOLD PULLS

D - CALACATTA AURORA QUARTZ COUNTERS

E - FARMHOUSE HARDWOOD "MAGNOLA"

F - SHERWIN WILLIAMS "GREEK VILLA"

G - CAPITAL LIGHTING BIANCA KITCHEN PENDANT

H - MISENO "MIA" KITCHEN FAUCET

I - CAPITAL LIGHTING JUDE 30" LIVING LIGHT

**BACKSPLASH - BRICK SET*

**GROUT - WHITE*

VJ



A



B



C



D



E



F



J



G



I



K



H



L

NATURAL KITCHEN - MASTER BATH

A - SHOWER WALLS "PETAL"

B - TERRA SOL COUNTER TOPS

C - STONE WASH SHAKER CABINETS

D - ARTIC WHITE PENNY TILE

E - BATH FLOOR ATLAS FORGE TIN

F - KICHLER BRETTIN 14" VANITY LIGHT

G - DELTA TRINSIC DIVERTER VALVE

H - DELTA TRINSIC SHOWER TRIM PKG

I - DELTA NICOLI WIDE SPREAD FAUCET

J - Uttermost Amherst Black Flat Iron Mirror

K - GOLD HARDWARE

L - DELTA TRINSIC HAND SHOWER

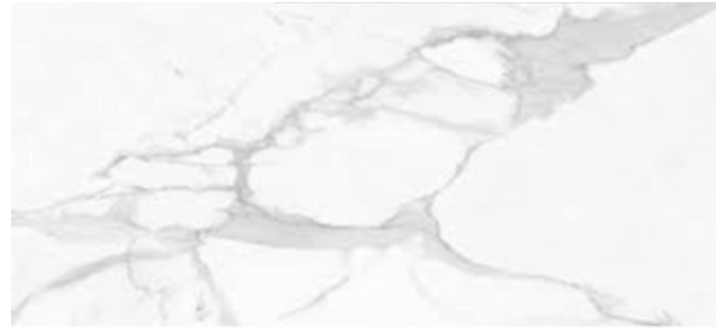
*TILE SURROUND -
HERRINGBONE

*GROUT - TBD





A



C



B



D



E



F



G

H



I



NATURAL KITCHEN - GUEST BATH 1

A - SHOWER SURROUND "BAMBOO"

B - CAPITAL LIGHTING 24" VANITY LIGHT

C - BATH FLOOR MATTE MARBLE

D - DELACORA MOROCCAN ARCED MIRROR

E - WHITE SHAKER CABINETS

F - COUNTER TILE CALACATTA AURORA

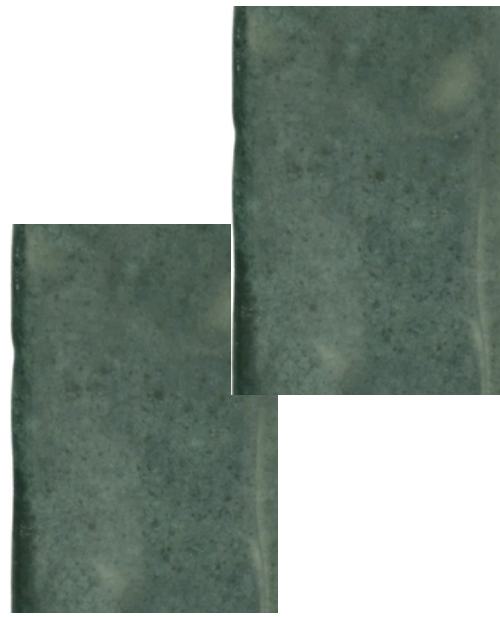
G - DELTA NICOLI SINGLE HOLE FAUCET

H - DELTA TRINSIC SHOWER KIT

I - GOLD CABINET PULLS

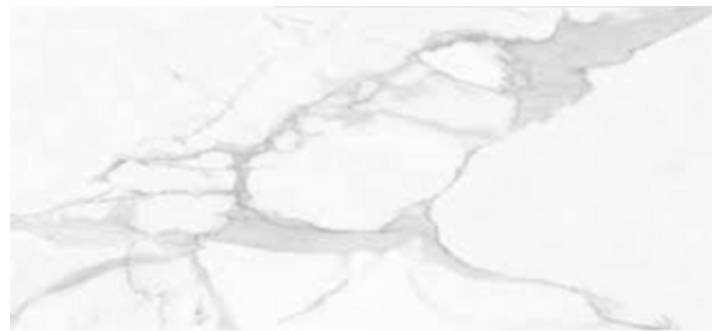
**TILE SURROUND -
VERTICAL STACKED BOND.
GROUT - LIGHT GREY

VJ



B

A



C



D



E



F

G



H



I



NATURAL KITCHEN - GUEST BATH 2

A - ELEGANT LIGHTING ETERNITY 28" MIRROR

B - SHOWER SURROUND "ALLURE"

C - BATH FLOOR MATTE MARBLE

D - VISUAL COMFORT KEATON SCONCE

E - STONE SHAKER CABINETS

F - COUNTER TILE ARABESCATO MOUNTAIN

G - DELTA NICOLI SINGLE HOLE FAUCET

H - DELTA TRINSIC SHOW KIT

I - GOLD CABINET PULLS

**TILE SURROUND -*

VERTICAL STEP LADDER

**GROUT - WHITE*

VJ



A



B



C



D



E

APPLIANCE PACKAGE A

A - FRIGIDAIRE ELECTRIC RANGE

B - CCY DISHWASHER

C - WHIRLPOOL MICROWAVE

D - WHIRLPOOL WALL MOUNT RANGE HOOD

E - SXS FRIDGE

VJ

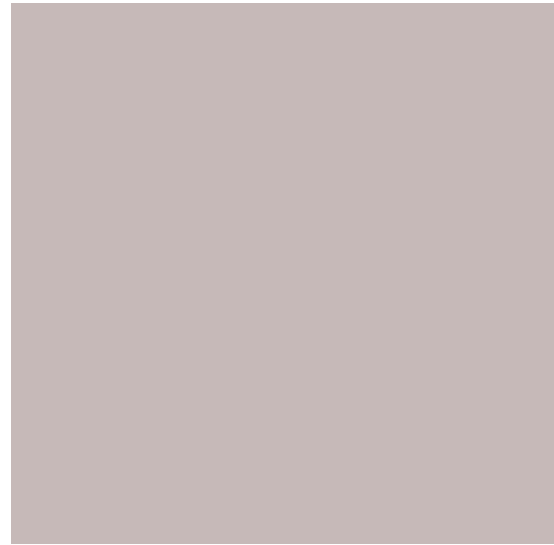


A

ROOFTOP PACKAGE - UPGRADE

A -DELUXE OUTDOOR KITCHEN WITH PROPANE GRILL + BEVERAGE CENTER

VJ



A

B

C

D

BEDROOM LIGHTING + PAINT SELECTIONS

A - SW "GREEK VILLA" - MAIN BASE THROUGHOUT (WALLS + TRIM)

B - SW "STUDIO MAUVE" - GUEST BEDROOM (ODDS)

C - SW "DARK NIGHT" - GUEST BEDROOM (EVENS)

D - GUEST BEDROOM FAN

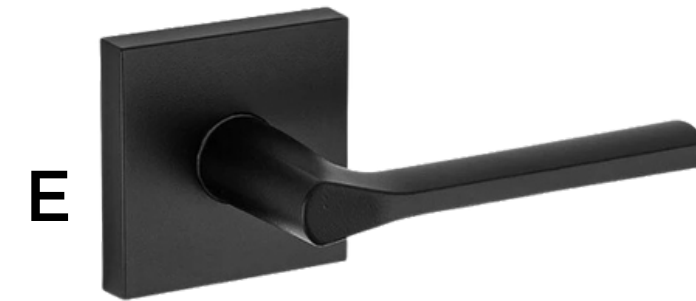
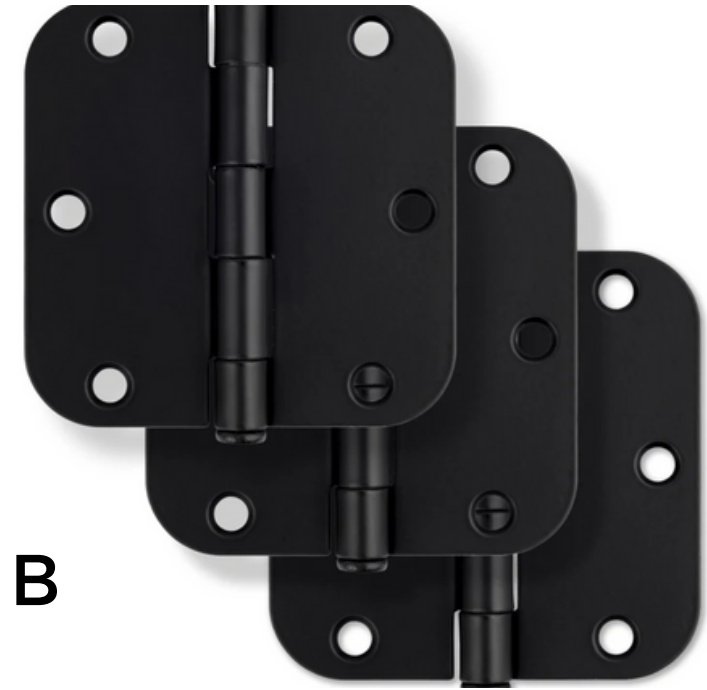
E - PRIMARY BEDROOM FIXTURE

A - C = BASE

D - F = ACCENT

*WALLS - FLAT + TRIM - GLOSSY





A

B

D

E

C

DOORS + HARDWARE

A - SHAKER 2 PANEL INTERIOR DOOR

F - EXTERIOR LIGHTING - KICHLER 2 LIGHT 12" OUTDOOR WALL SCONCE (MATTE BLACK)

B - MISENO MATTE BLACK HINGES

C - MISENO ELKTON ROUND ROD PRIVACY DOOR PRIVACY SET (MATTE BLACK)

D - FOUR PANEL TRANSOM EXTERIOR DOOR (BLACK)

E - KWIKSET LISBON PASSAGE LEVER + TOUCHSCREEN COMBO PACK

VJ