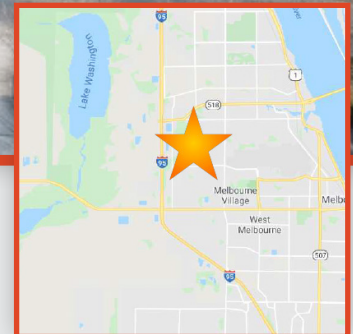




4045 DOW ROAD, MELBOURNE, FL 32934  
**DOW ROAD/ELLIS ROAD  
INDUSTRIAL FLEX BUILDINGS**



### PROPERTY HIGHLIGHTS

Suite 106  
6,600 SF Office/Warehouse Space

- Located in close proximity to the Space Coast and growing related industries
- New Ellis Rd. connection to I-95 is less than 1.5 miles from property
- Excellent logistical location with easy access to I-95, SR 528, and Port Canaveral
- Most units are fully air conditioned

### DRIVE TIMES

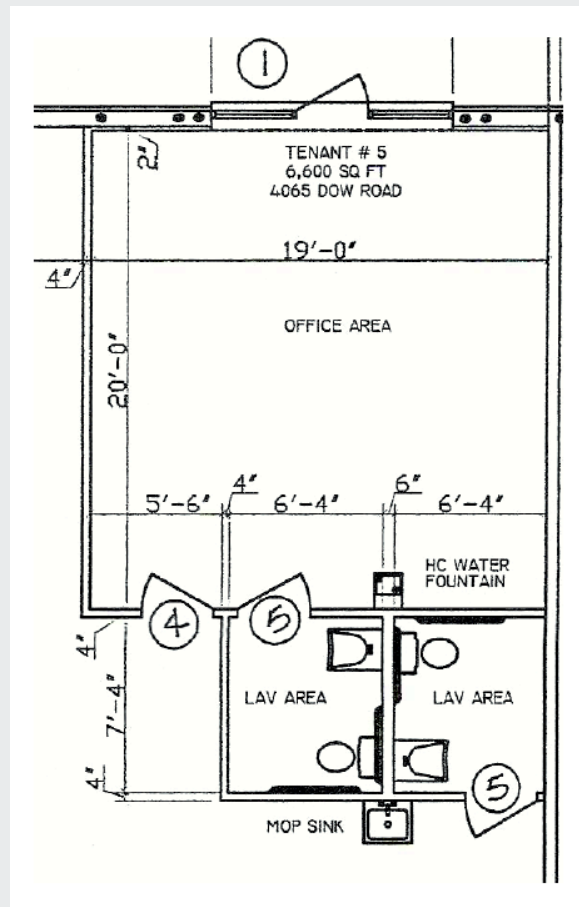
Orlando	1 Hour
Port Canaveral	36 Minutes
Kennedy Space Center	40 Minutes

For More Information:

**Joe Poirier**  
321-537-7996  
Joe@v3capital.com

4045 DOW ROAD, MELBOURNE, FL 32934

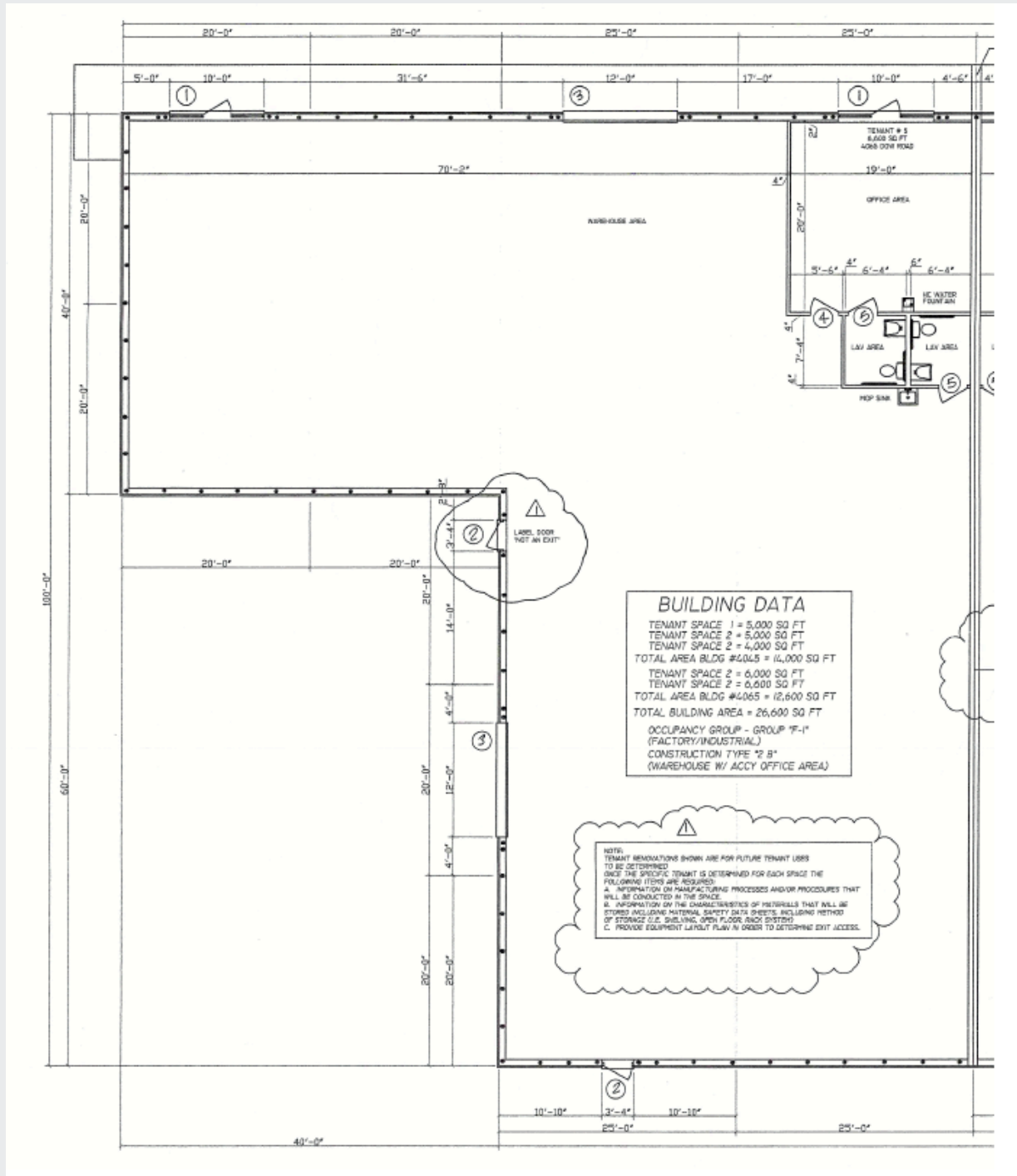
**DOW ROAD/ELLIS ROAD - INDUSTRIAL FLEX BUILDINGS**





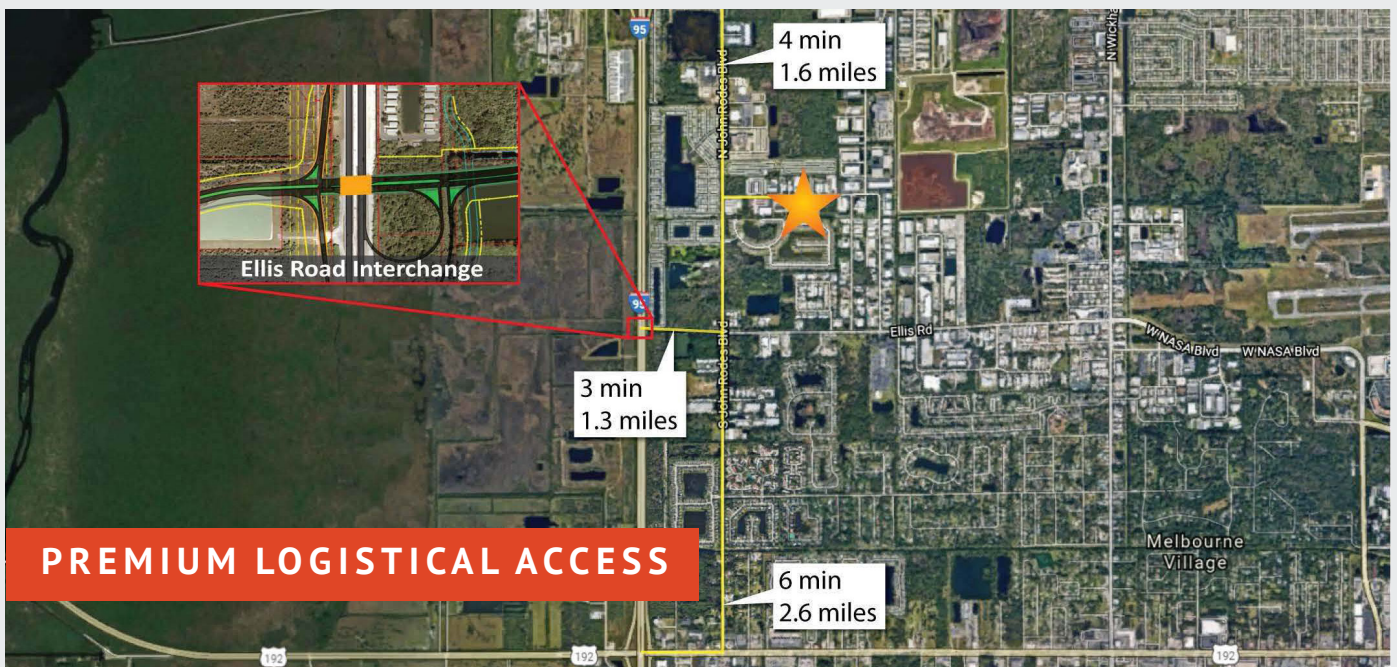
4045 DOW ROAD, MELBOURNE, FL 32934

**DOW ROAD/ELLIS ROAD - INDUSTRIAL FLEX BUILDINGS**



4045 DOW ROAD, MELBOURNE, FL 32934

**DOW ROAD/ELLIS ROAD - INDUSTRIAL FLEX BUILDINGS**



For More Information:

**Joe Poirier**  
321-537-7996  
Joe@v3capital.com