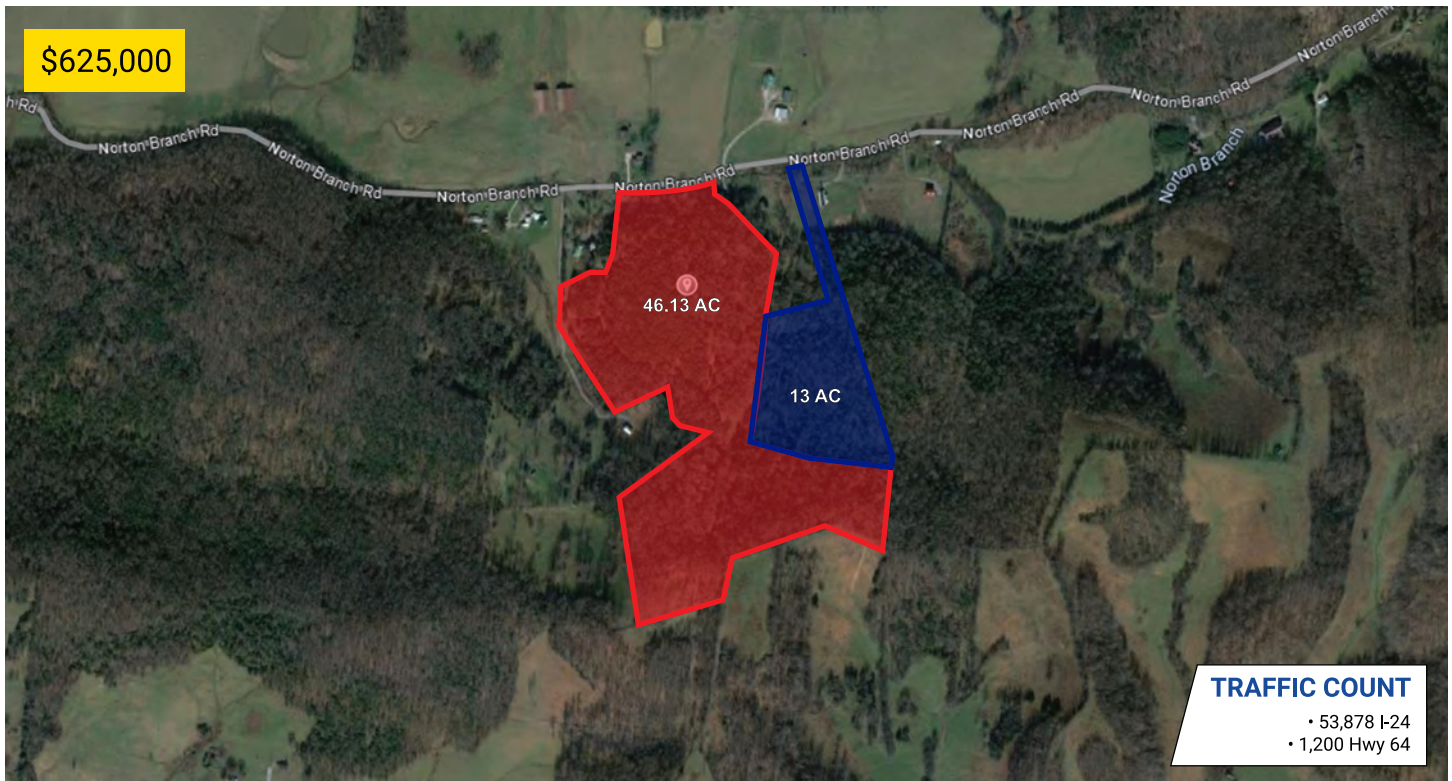


Norton Branch Rd.

BEECHGROVE, TENNESSEE 37018



Acres: 59.13 +/-
Structures: N/A
Amenities: N/A
Road Frontage: 615 ft. +/-
Property Type: Land
Zoning: FRST ; RES

PROPERTY HIGHLIGHTS

- Large Lot (46.13ac) zoned Forest
- Small Lot (13ac) zoned Residential
- Easy Access to I-24, U.S.-41, Hwy 64
- Approx. 1 hour to Nashville Airport



DEMOGRAPHIC SNAPSHOT

COFFEE COUNTY

2025 Population Estimate	62,794
2025 Median HH Income	\$60,656
2025 Number of Households	22,794



615-896-0000

www.swansondevelopments.com