

195,000 SF

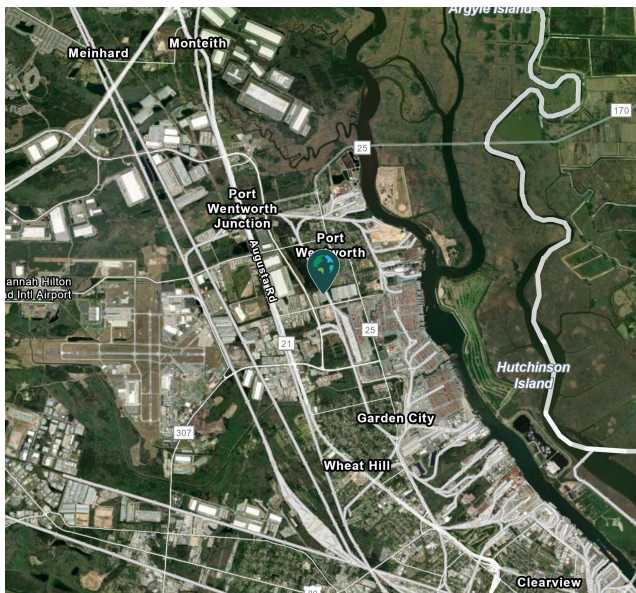
Industrial Space For Lease



Prologis Portside



318 Grange Road
Savannah, Georgia 31407 USA



LOCATION

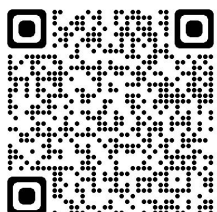
- ±2.5 miles from the Port of Savannah
- ±4.3 miles from I-95
- ±4.5 miles from the Savannah/Hilton Head International Airport
- ±6.9 miles from I-16

FACILITY

- 195,000 SF available
- 2,027 SF office
- 25' minimum clear height
- 60' x 30' column spacing
- Twelve (12) 10' x 10' dock high doors with levelers
- Two (2) 20' x 10' oversized dock high doors
- Two (2) 20' x 18' oversized drive-in doors
- ESFR sprinkler system
- 480/277V, 800 amps
- Trailer storage available

ADVANTAGES AND AMENITIES

- Prologis Clear Lease® – Know your lease expenses and capital costs with greater certainty before you sign



Scan the QR code for more info!

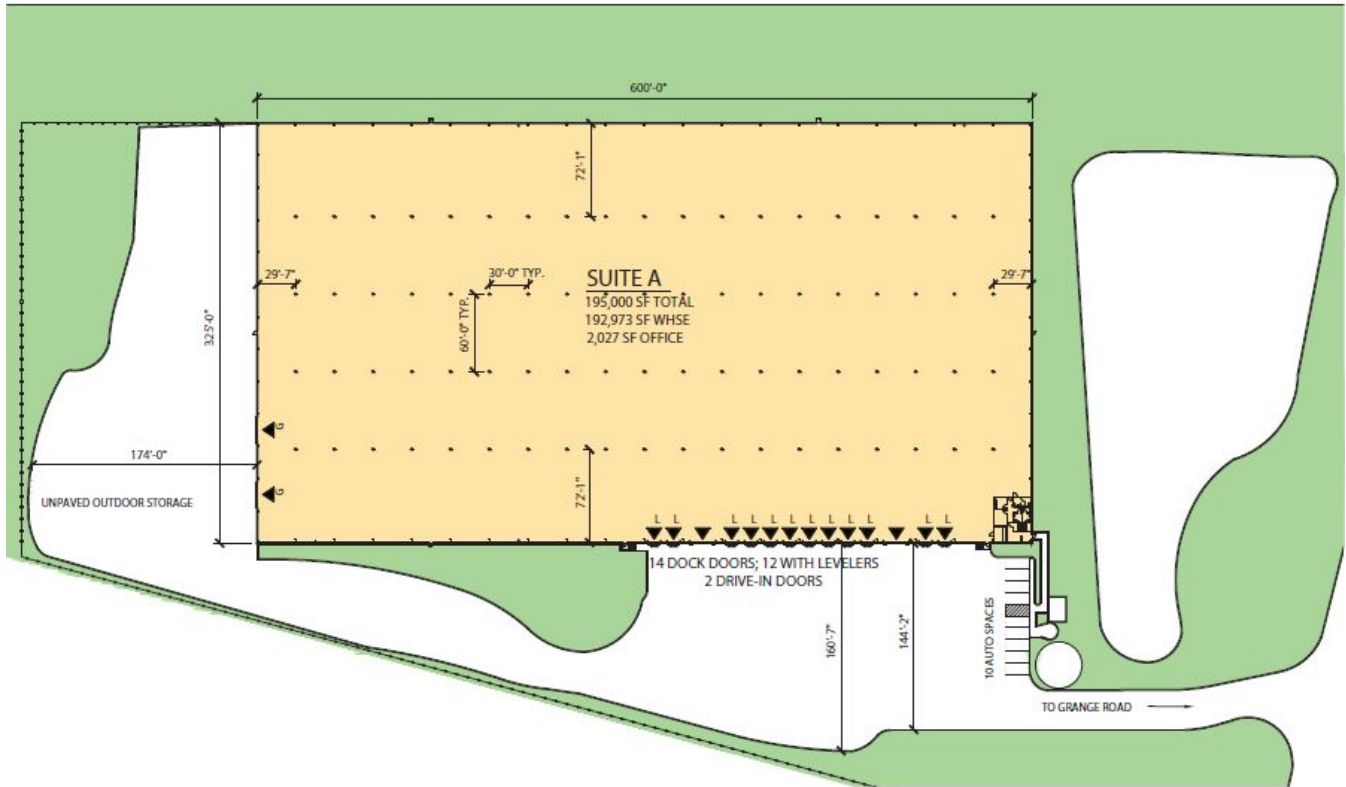
Your single-source service for efficient move-in and operations: [prologisessentials.com](https://www.prologisessentials.com)

195,000 SF

Industrial Space For Lease



Prologis Portside



LEGEND:

- ▲ DOCK DOOR
- ▲ DOCK DOOR W/LEVELER
- ◆ DRIVE-IN DOOR
- ▲ ON-GRADE DOOR
- ▭ EDGE OF DOCK LEVELER
- ▽ PIT LEVELER
- LAND
- LEASED AREA
- VACANT AREA



JLL
Chris Tomasulo, SIOR
chris.tomasulo@jll.com
ph +1 404 995 2462
cell +1 770 330 3263
3344 Peachtree Rd NE Ste 1200
Atlanta, GA 30326 USA

JLL
Bennett Rudder, SIOR
bennett.rudder@jll.com
ph +1 912 250 4595
cell +1 404 960 0080
347 Abercorn Street
Savannah, GA 31401 USA

JLL
Lindsey Wilmot
lindsey.wilmot@jll.com
ph +1 912 250 4595
cell +1 912 663 9394
347 Abercorn Street
Savannah, GA 31401 USA

Prologis
Cassie Hanavich
chanavich@prologis.com
ph +1 404 760 7256
cell +1 404 449 5356
3475 Piedmont Road NE Ste 650
Atlanta, GA 30305 USA