



WINSTON TRAITEL
REALTY, INC.

FOR LEASE



5790-5832 Highland Road Waterford, MI 48327

For More Information Contact:

Mark Lusky
248.624.7200
mlusky@wtrealty.com

OR

Jeff Raitt
248.624.7200
jraitt@wtrealty.com

Information contained herein is subject to verification and no liability for errors or omissions is assumed.
Price is subject to change and listing may be withdrawn without notice.

**5790-5832 HIGHLAND ROAD
WATERFORD, MI 48327**

PROPERTY INFORMATION

TWO UNITS AVAILABLE:

FIRST UNIT: 840 SQ. FT.


SECOND UNIT: 2330 SQ. FT.

- **WELL MAINTAINED AND VIBRANT RETAIL CENTER**
- **LEASE RATE: \$16 PER SQUARE FOOT TRIPLE NET**
- **OFFERING HALF RENT FOR THE FIRST YEAR OF THE LEASE**
- **ZONING: C-3 (GENERAL BUSINESS)**
- **TRAFFIC COUNT 37,319**
- **EXCELLENT SIGNAGE, AVAILABLE WITH UNOBSTRUCTED SIGHTLINE**



**FOR MORE INFORMATION CONTACT:
MARK LUSKY OR JEFF RAITT 248-624-7200**

Demographic Summary Report

Highland Row					
5790-5832 Highland Rd, Waterford, MI 48327					
Building Type: General Retail	Total Available: 3,330 SF				
Secondary: Storefront Retail/Office	% Leased: 76.15%				
GLA: 13,961 SF	Rent/SF/Yr: Negotiable				
Year Built: 1988					
Radius	1 Mile	3 Mile	5 Mile		
Population					
2029 Projection	5,938	52,141	135,865		
2024 Estimate	6,021	52,613	137,085		
2020 Census	6,246	53,223	138,612		
Growth 2024 - 2029	-1.38%	-0.90%	-0.89%		
Growth 2020 - 2024	-3.60%	-1.15%	-1.10%		
2024 Population by Hispanic Origin	430	3,842	11,743		
2024 Population	6,021	52,613	137,085		
White	4,770 79.22%	43,221 82.15%	105,785 77.17%		
Black	427 7.09%	2,420 4.60%	10,863 7.92%		
Am. Indian & Alaskan	6 0.10%	113 0.21%	325 0.24%		
Asian	150 2.49%	986 1.87%	3,237 2.36%		
Hawaiian & Pacific Island	6 0.10%	24 0.05%	64 0.05%		
Other	662 10.99%	5,849 11.12%	16,812 12.26%		
U.S. Armed Forces	0	0	1		
Households					
2029 Projection	2,940	22,827	57,642		
2024 Estimate	2,983	23,032	58,182		
2020 Census	3,097	23,264	58,891		
Growth 2024 - 2029	-1.44%	-0.89%	-0.93%		
Growth 2020 - 2024	-3.68%	-1.00%	-1.20%		
Owner Occupied	1,649 55.28%	16,958 73.63%	41,926 72.06%		
Renter Occupied	1,334 44.72%	6,074 26.37%	16,256 27.94%		
2024 Households by HH Income					
Income: <\$25,000	576 19.32%	3,358 14.58%	8,771 15.08%		
Income: \$25,000 - \$50,000	943 31.62%	4,895 21.25%	11,592 19.92%		
Income: \$50,000 - \$75,000	460 15.43%	4,273 18.55%	9,758 16.77%		
Income: \$75,000 - \$100,000	439 14.72%	3,314 14.39%	7,972 13.70%		
Income: \$100,000 - \$125,000	223 7.48%	2,684 11.65%	6,301 10.83%		
Income: \$125,000 - \$150,000	171 5.73%	1,686 7.32%	4,057 6.97%		
Income: \$150,000 - \$200,000	117 3.92%	1,574 6.83%	4,800 8.25%		
Income: \$200,000+	53 1.78%	1,247 5.41%	4,930 8.47%		
2024 Avg Household Income	\$65,647	\$86,129	\$94,435		
2024 Med Household Income	\$49,102	\$69,085	\$72,408		



Information is subject to verification and no liability for errors or omissions is assumed. Price is subject to change and listing may be withdrawn.

12/15/2025

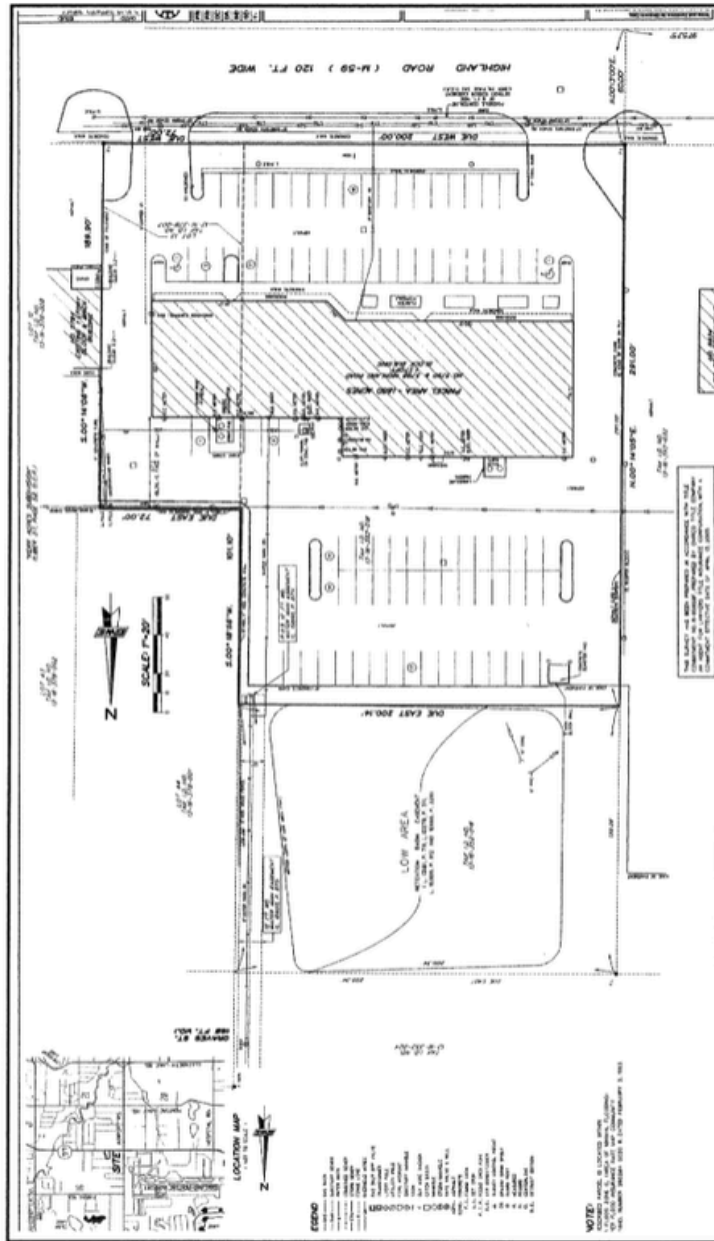
© 2025 CoStar Group - Licensed to Winston-Traitel Realty Inc - 77781.



**FOR MORE INFORMATION CONTACT:
MARK LUSKY OR JEFF RAITT 248-624-7200**

Information contained herein is subject to verification and no liability for errors or omissions is assumed. Price is subject to change and listing may be withdrawn without notice.

SURVEY



49

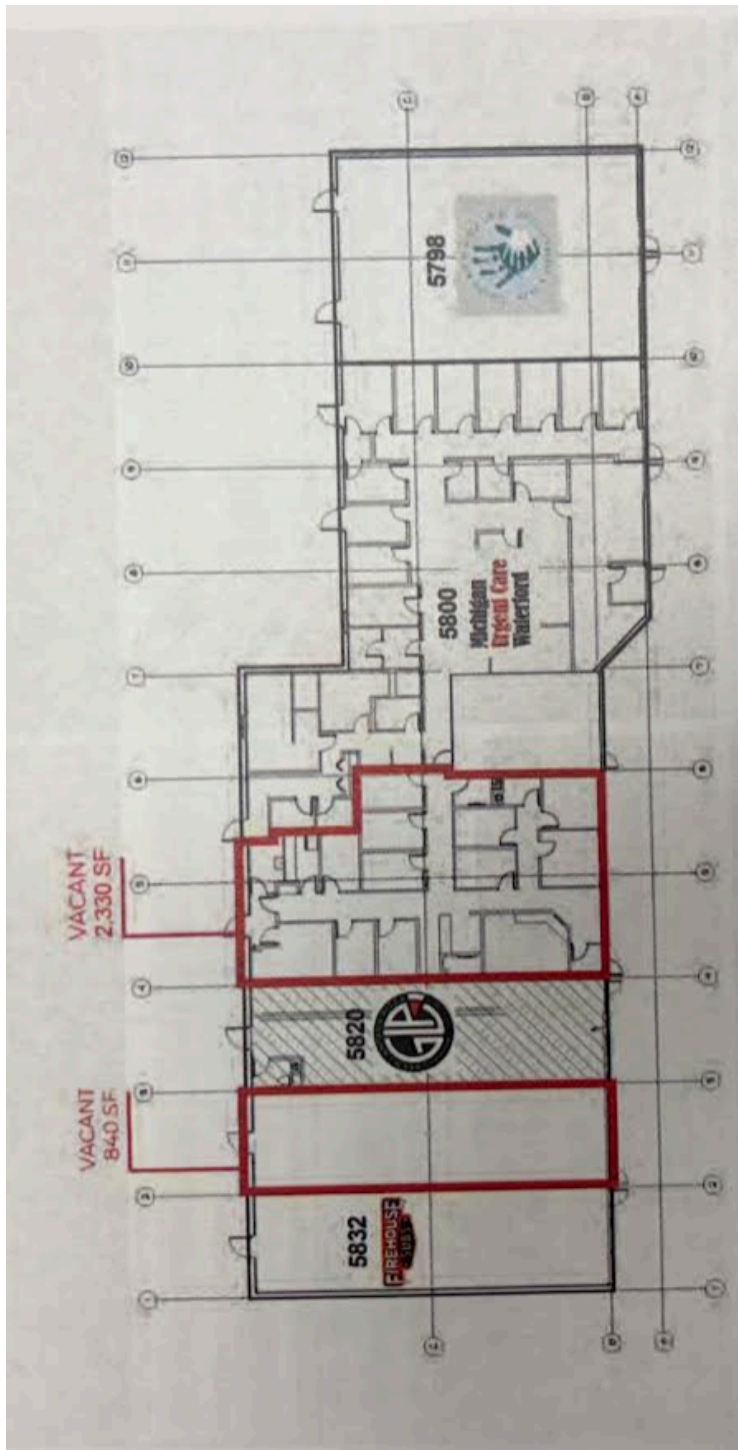
Siegle & Associates, LLC



FOR MORE INFORMATION CONTACT:
MARK LUSKY OR JEFF RAITT 248-624-7200

Information contained herein is subject to verification and no liability for errors or omissions is assumed.
Price is subject to change and listing may be withdrawn without notice.

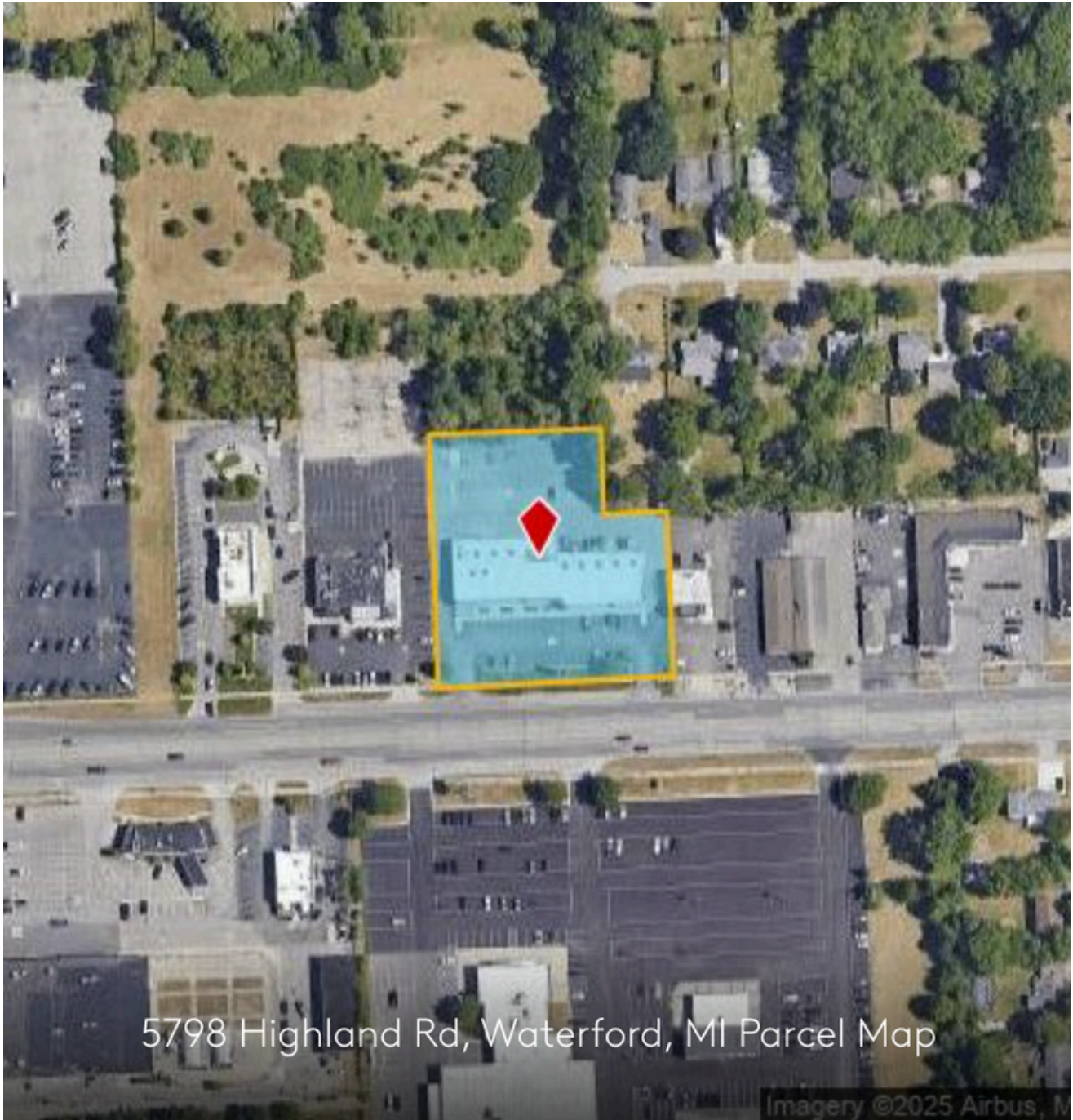
SITE PLAN



FOR MORE INFORMATION CONTACT:
MARK LUSKY OR JEFF RAITT 248-624-7200

Information contained herein is subject to verification and no liability for errors or omissions is assumed.
Price is subject to change and listing may be withdrawn without notice.

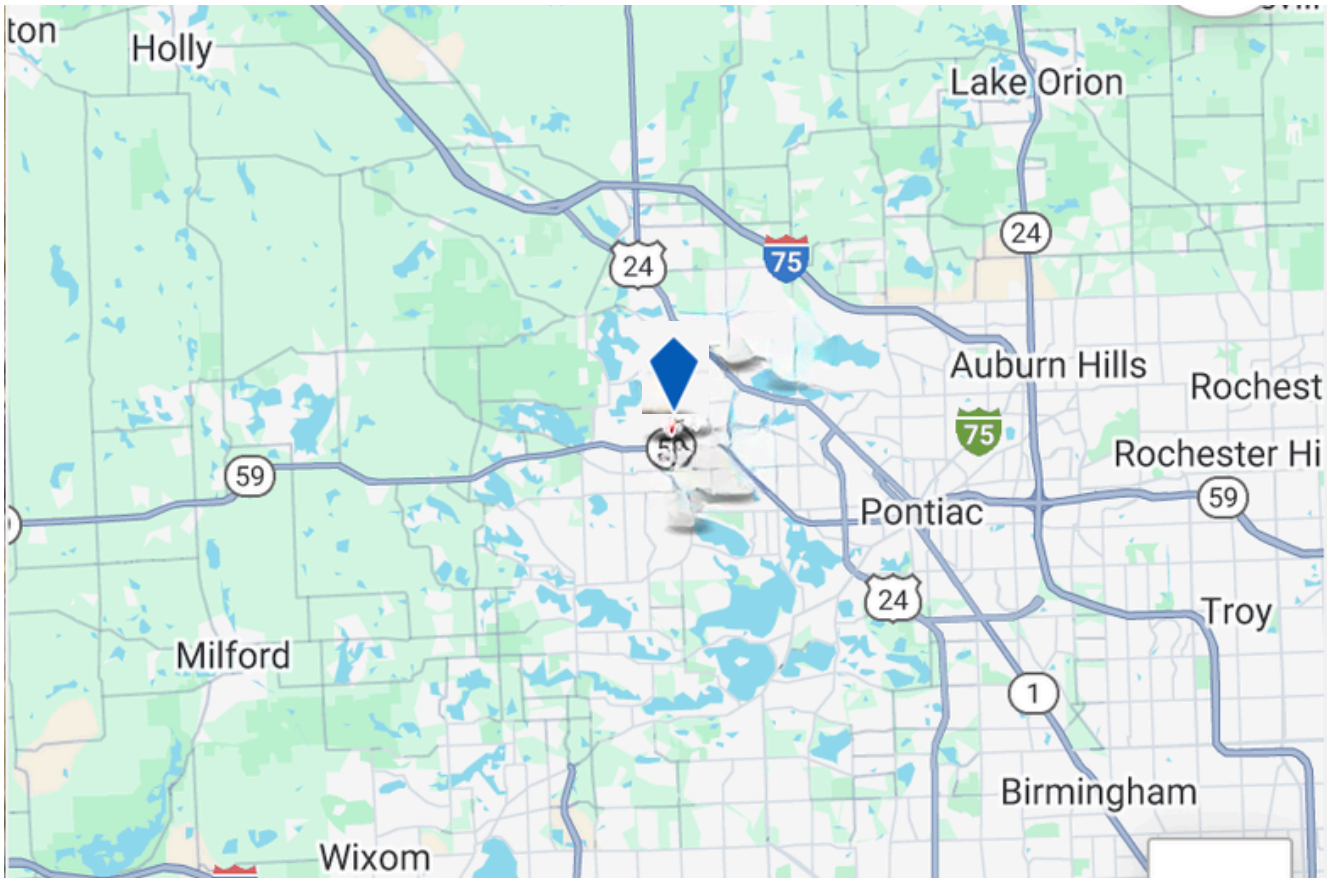
AERIAL



FOR MORE INFORMATION CONTACT:
MARK LUSKY OR JEFF RAITT 248-624-7200

Information contained herein is subject to verification and no liability for errors or omissions is assumed.
Price is subject to change and listing may be withdrawn without notice.

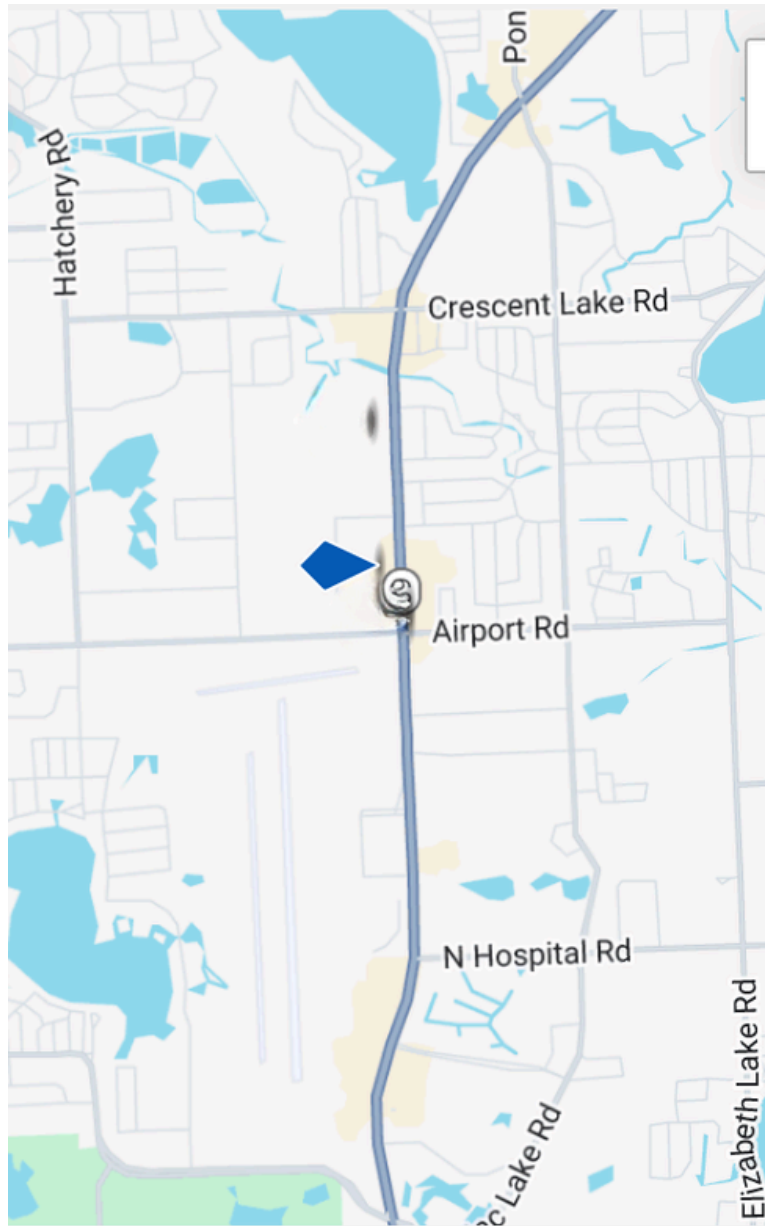
MAPS



FOR MORE INFORMATION CONTACT:
MARK LUSKY OR JEFF RAITT 248-624-7200

Information contained herein is subject to verification and no liability for errors or omissions is assumed.
Price is subject to change and listing may be withdrawn without notice.

MAPS



FOR MORE INFORMATION CONTACT:
MARK LUSKY OR JEFF RAITT 248-624-7200

Information contained herein is subject to verification and no liability for errors or omissions is assumed.
Price is subject to change and listing may be withdrawn without notice.