

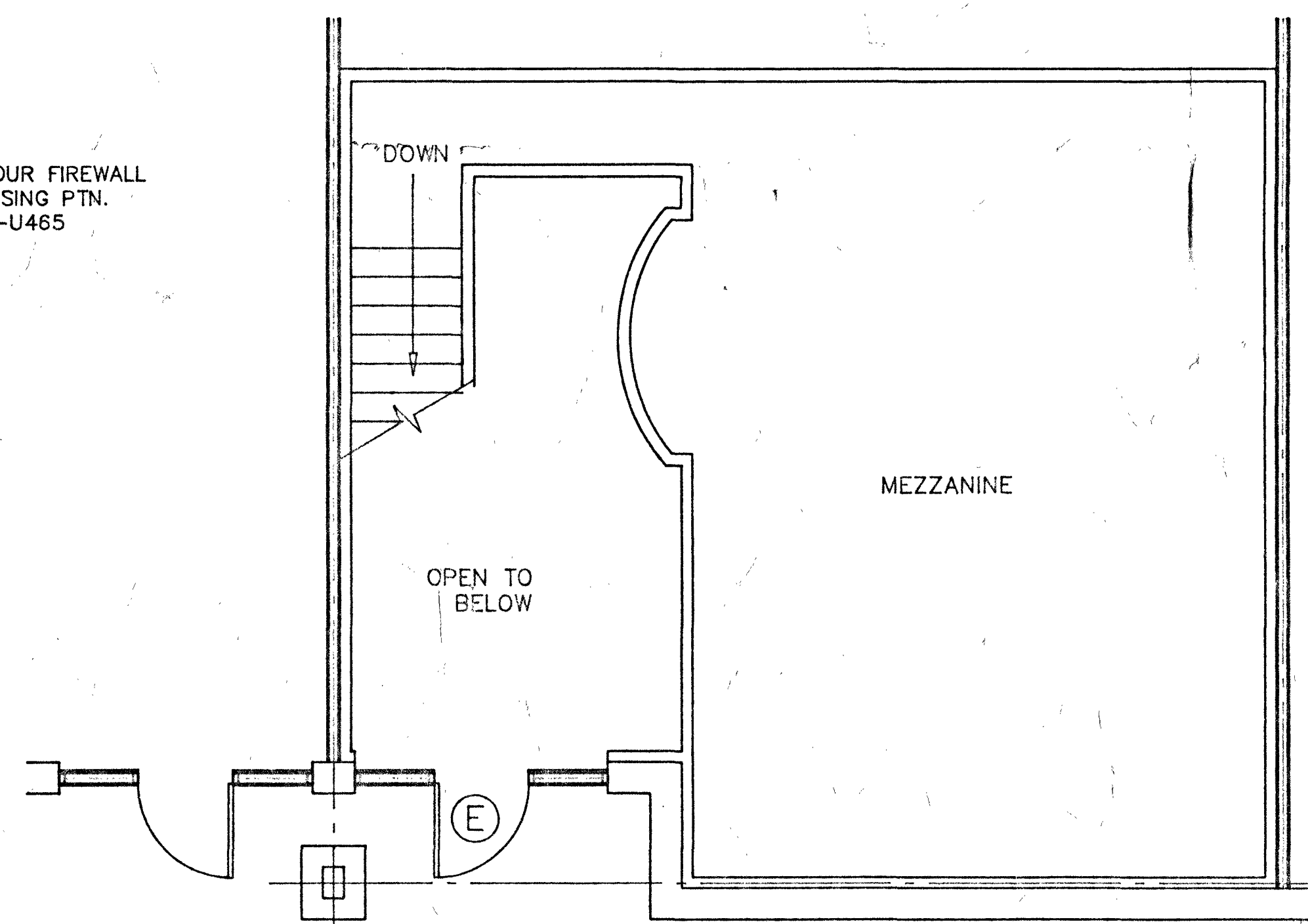
FIRST FLOOR PLAN

OFFICE AREA PLAN - UNIT "B"
GRACE REALTY

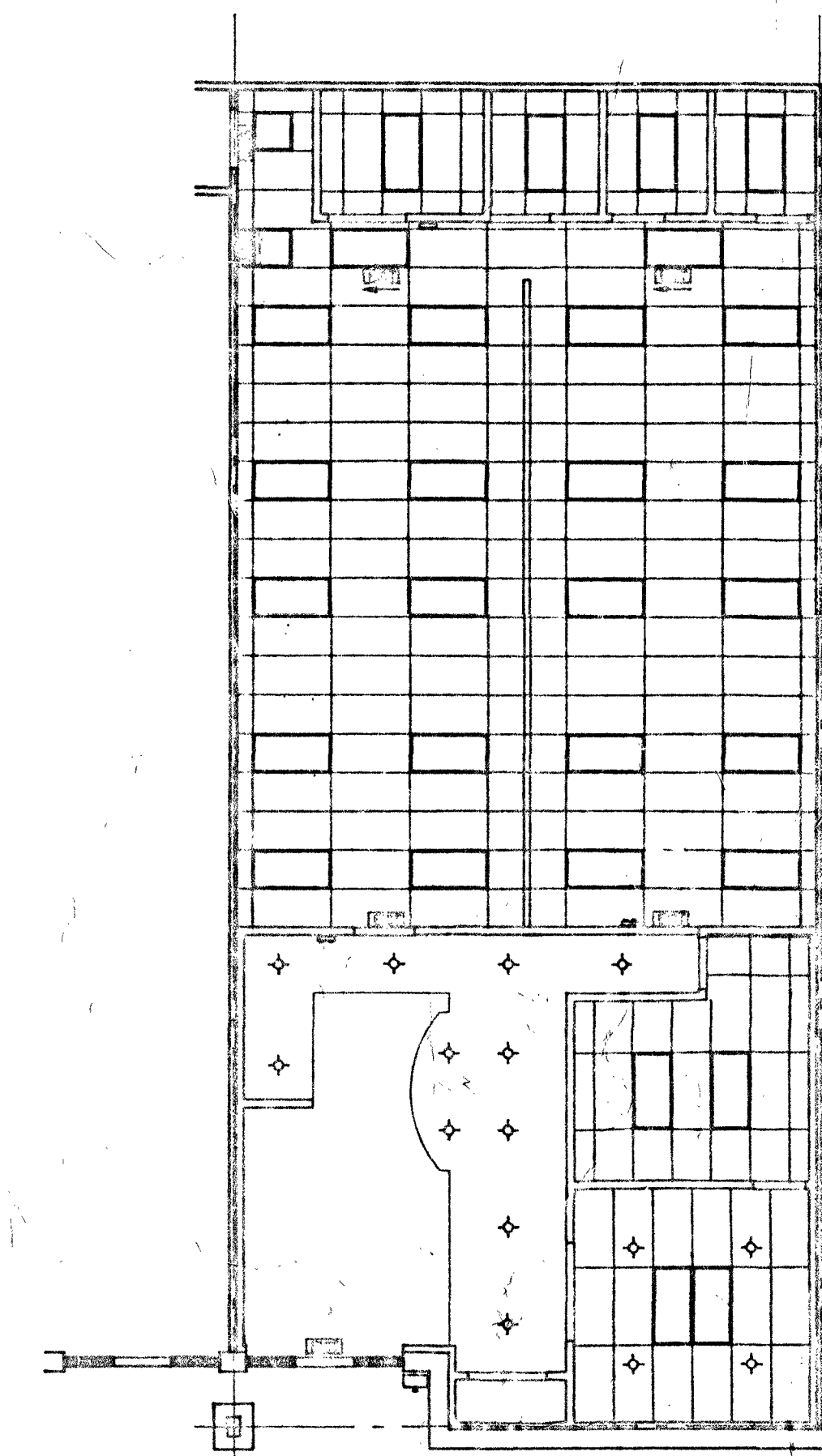
TOTAL AREA: 2067.6 s.f. SCALE: 1/4"=1'-0"
MEZZ.: 523.6 s.f.

NOTES:

1. ALL INTERIOR PARTITIONS 3-5/8" STEEL STUDS W/ 1/2" GYP. WALLBD. EACH SIDE W/ FUL-THK BLANKET INSULATION.
2. DEMISING PARTITION TO BE 3-5/8" STEEL STUDS W/ 5/8" F.C. GYP. WALLBD. EACH SIDE W/ FUL-THK BLANKET INSULATION. 1 HOUR U.L.-U465.
3. ALL DOORS TO BE WOOD FRAMES W/ S.C. WOOD DOOR UNLESS OTHERWISE NOTED
4. ALL EXTERIOR WALLS TO BE FRAMED W/ 3-5/8" STEEL STUDS W/ 1/2" GYPSUM WALLBD. FUL-THK BLANKET INSULATION.
5. WALLS NOTED ARE EXISTING 1 HOUR U.L.-U465.
6. 120V EXIT W/12V REMOTE.
7. EXISTING DOOR
8. EMERGENCY LIGHTING BATTERY WITH 2 HEADS.
9. 9W REMOTE EMERGENCY LIGHT.

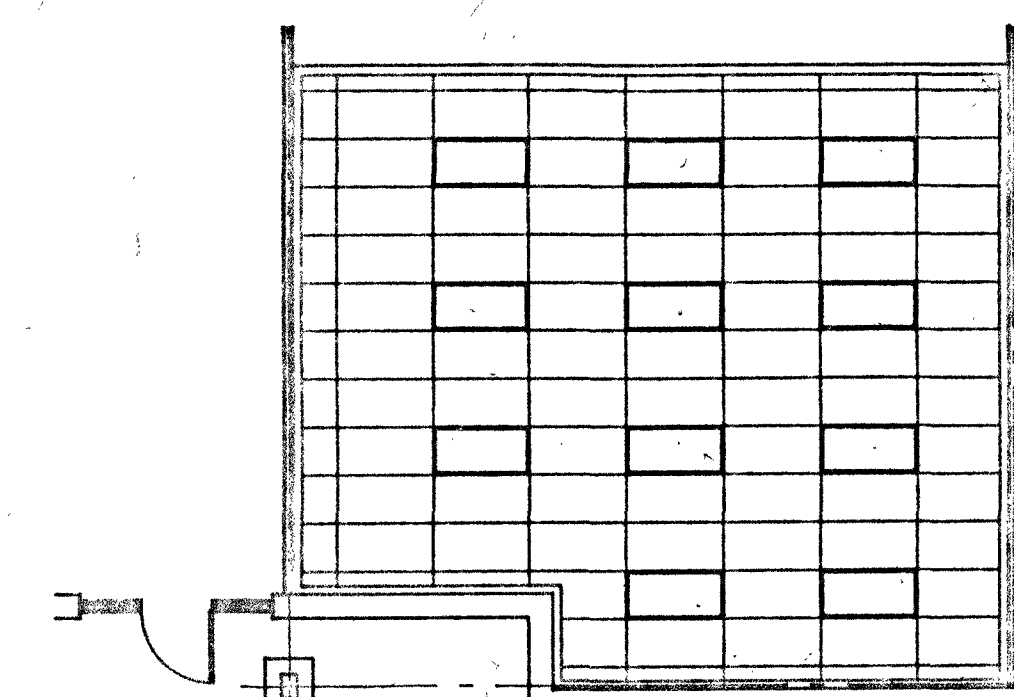


MEZZANINE



FIRST FLOOR
REFLECTED CEILING PLAN
SCALE: 1/8"=1'-0"

E & Baers



MEZZANINE
REFLECTED CEILING PLAN
SCALE: 1/8"=1'-0"